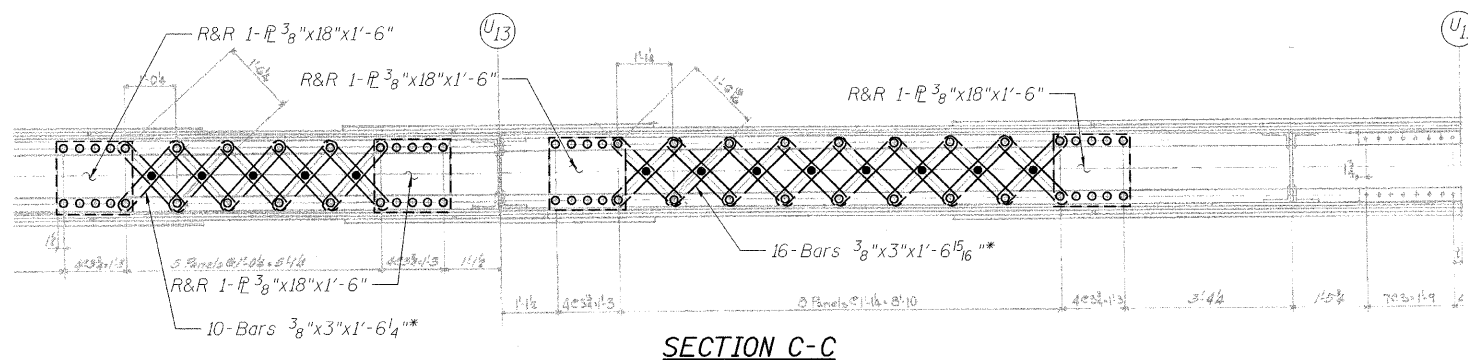
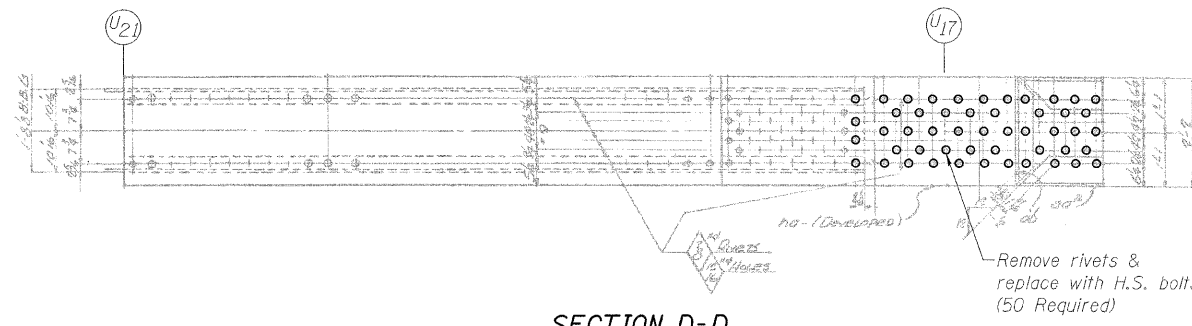


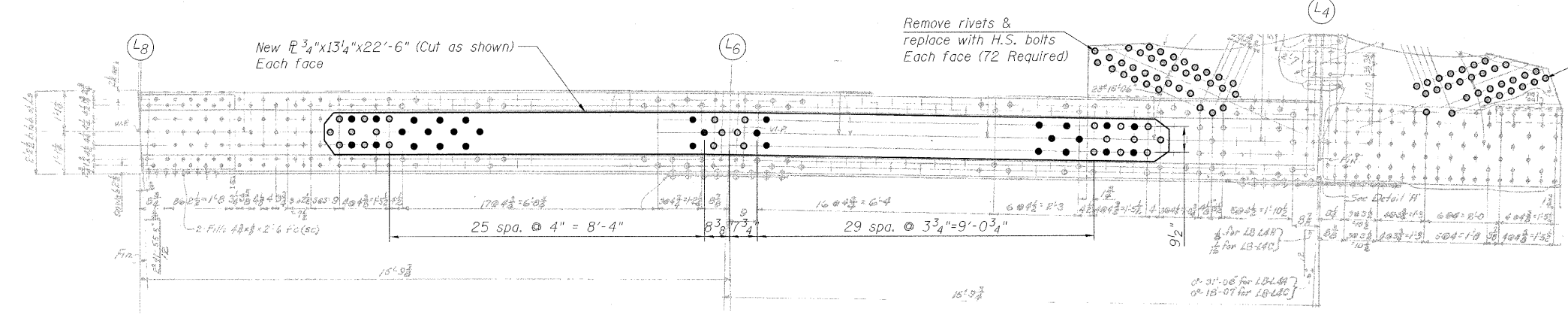
STATE OF ILLINOIS  
DEPARTMENT OF TRANSPORTATION



SECTION C-C

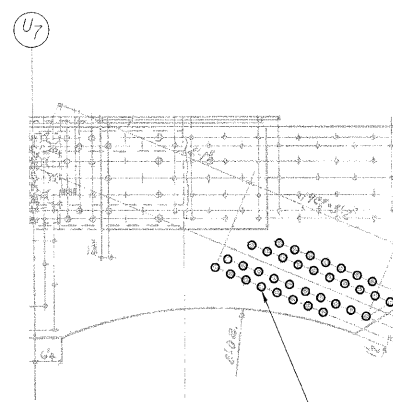


SECTION D-D

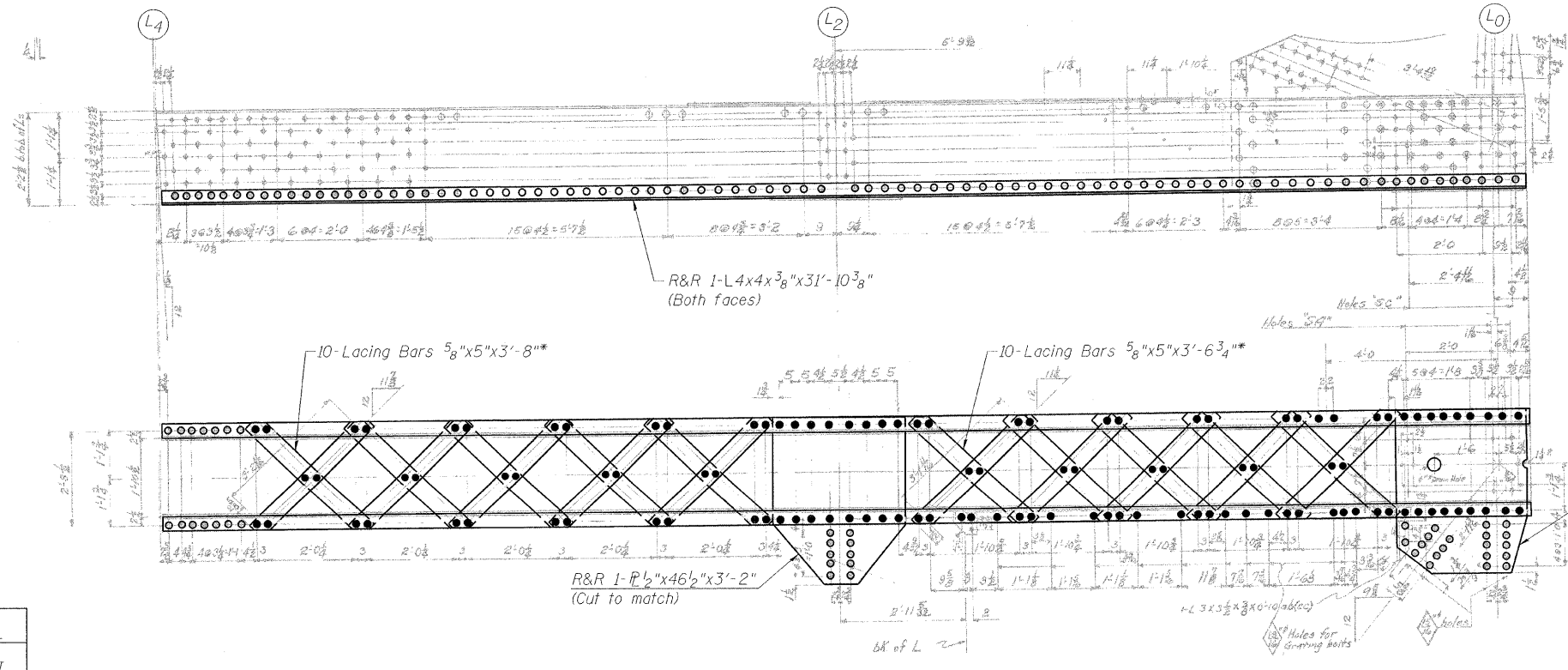


DETAIL B

Remove rivets & replace with H.S. bolts Each face (60 Required)



DETAIL C



SECTION F-F

LEGEND

- R&R Remove & replace
- Existing fastener to remain
- Hole to match existing location
- New hole
- Existing member to remain
- New member

Note:  
Portions of this drawing are extracted from original drawings for this bridge. Details shown are provided to illustrate the work to be performed.

TRUSS REPAIRS  
INSIDE TRUSS (SOUTHWEST)  
STRUCTURE NO. 016-2445

|          |             |
|----------|-------------|
| DESIGNED | D. V. PATEL |
| CHECKED  | J. GRAINAWI |
| DRAWN    | D. C. PATEL |
| CHECKED  | A. HAMMAD   |

\* Measured Center-Center of holes.  
Proposed bar length and shape to match existing bars.

**PB Americas, Inc.**  
230 WEST MONROE STREET,  
SUITE 900  
CHICAGO, IL. 60606

|   |            |           |              |              |           |
|---|------------|-----------|--------------|--------------|-----------|
| SHEET NO. 91<br>163 SHEETS                      | F.A.P RTE. | SECTION   | COUNTY       | TOTAL SHEETS | SHEET NO. |
|   | 389        | 2424.2B-R | COOK         | 398          | 172       |
|   |            |           | CONTRACT NO. | 60D61        |           |
| FED. ROAD DIST. NO. 7 ILLINOIS FED. AID PROJECT |            |           |              |              |           |

T:\116843A\Structural\Cadd\Pre-Final\EB\_Plans\0162445-60D61-TRR-088.dgn  
07-MAY-2009