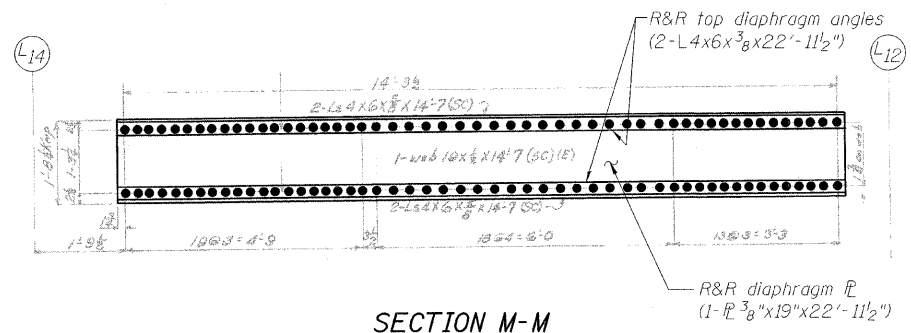
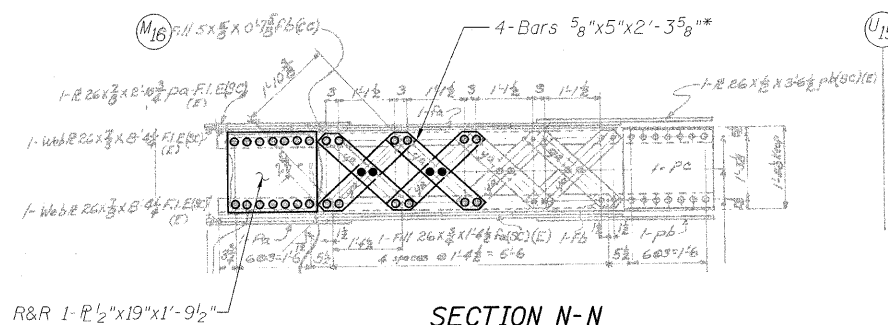


STATE OF ILLINOIS
DEPARTMENT OF TRANSPORTATION

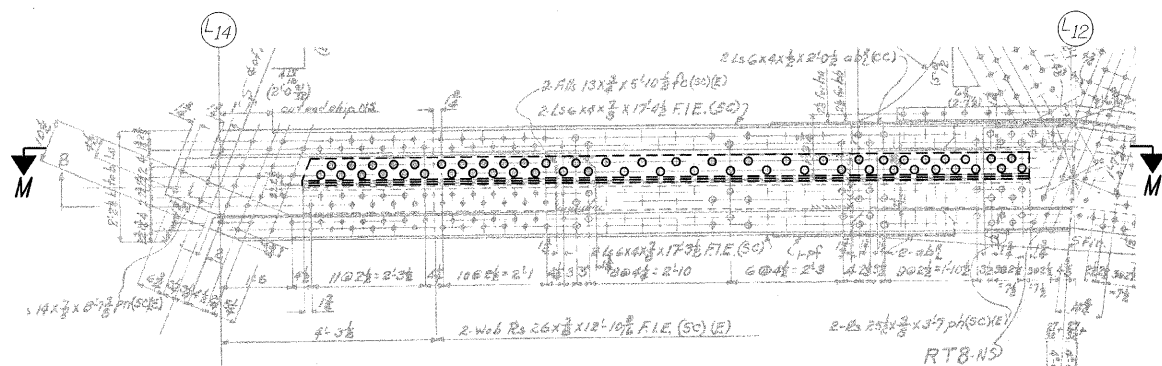


SECTION M-M

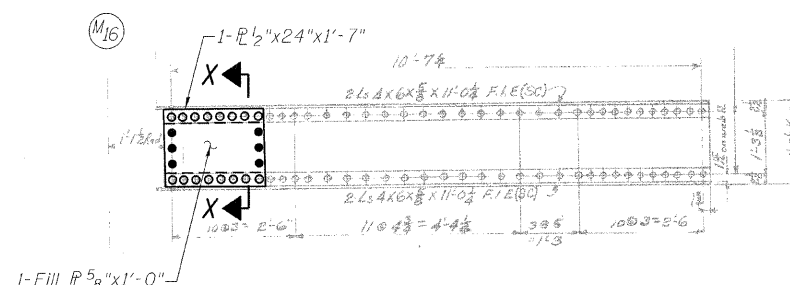


SECTION N-N

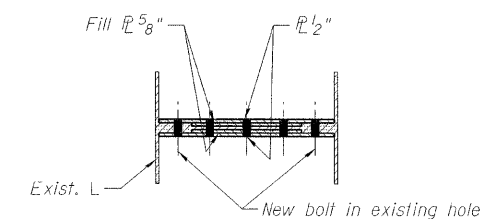
* Measured Center-Center of holes.
Proposed bar length and shape
to match existing bars.



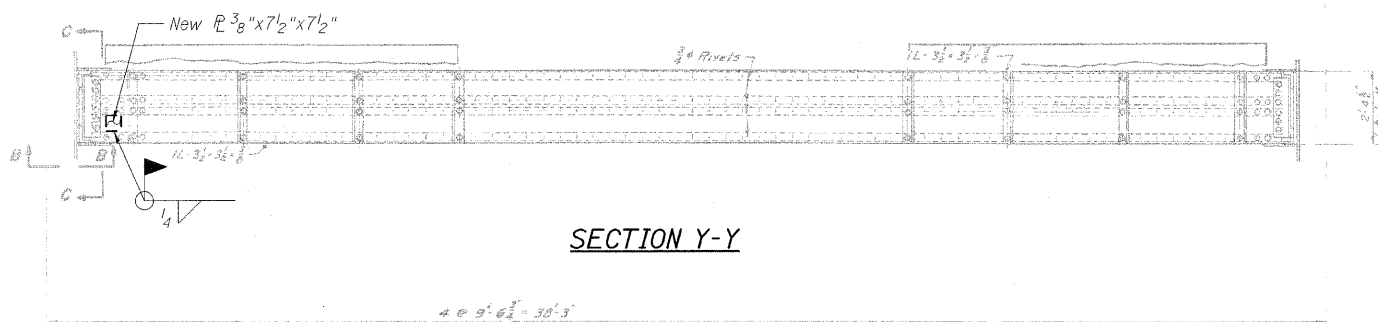
DETAIL Z



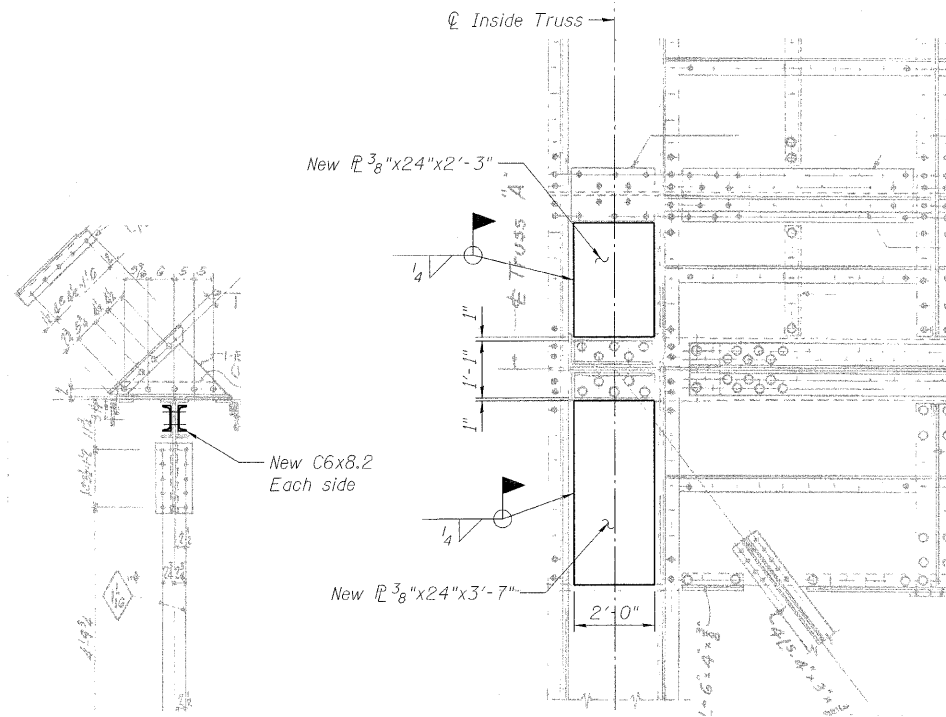
SECTION O-O



SECTION X-X



SECTION Y-Y



SECTION Z-Z

SECTION H-H

LEGEND

- R&R Remove & replace
- Existing fastener to remain
- Hole to match existing location
- New hole
- Existing member to remain
- New member

Note:
Portions of this drawing are extracted from original drawings for this bridge. Details shown are provided to illustrate the work to be performed.

* Measured Center-Center of holes.
Proposed bar length and shape
to match existing bars.

TRUSS REPAIRS
INSIDE TRUSS (SOUTHWEST)
STRUCTURE NO. 016-2445

DESIGNED	D. V. PATEL
CHECKED	J. GRAINAWI
DRAWN	D. C. PATEL
CHECKED	A. HAMMAD

LATTICE TRUSS ELEVATION

SHEET NO. 93	F.A.P R.T.E.	SECTION	COUNTY	TOTAL SHEETS	SHEET NO.
	389	2424.2B-R	COOK	398	174
163 SHEETS	CONTRACT NO.		60D61		
FED. ROAD DIST. NO. 7 ILLINOIS FED. AID PROJECT					

PB Americas, Inc.
230 WEST MONROE STREET,
SUITE 900
CHICAGO, IL. 60606