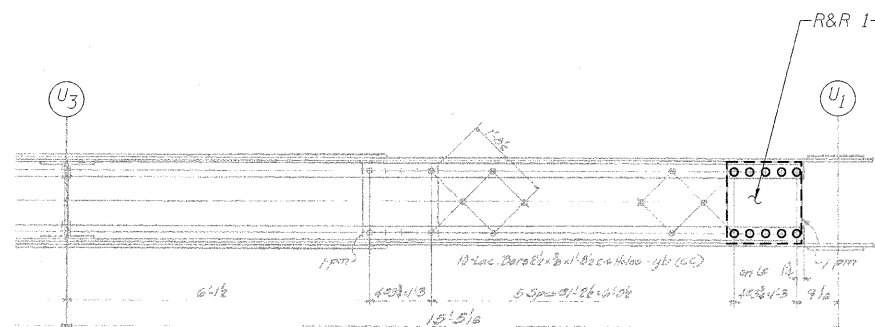
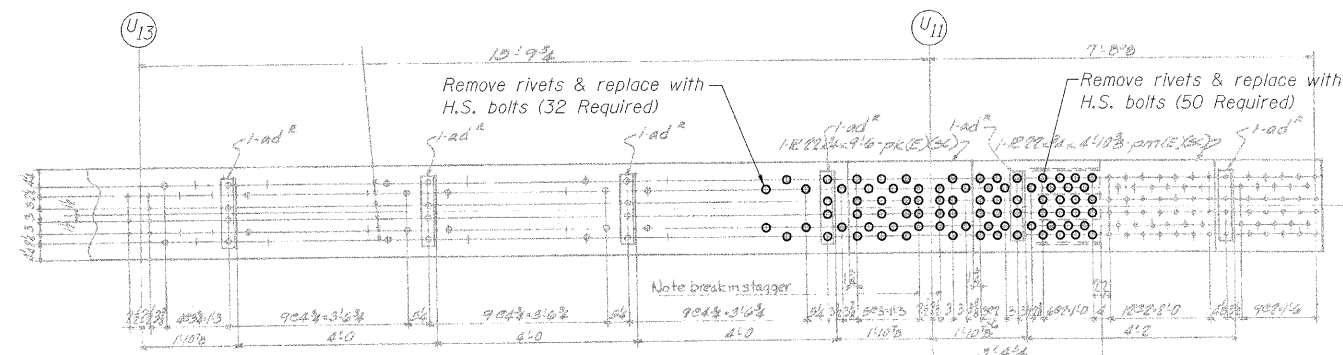


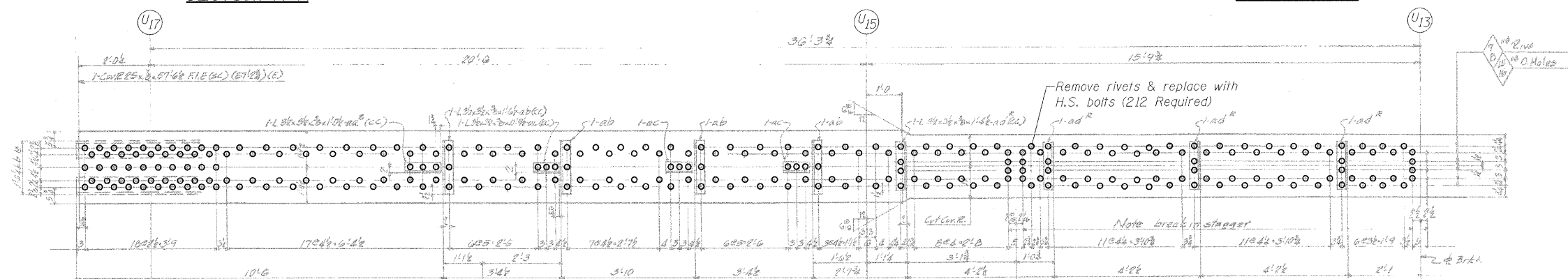
STATE OF ILLINOIS  
DEPARTMENT OF TRANSPORTATION



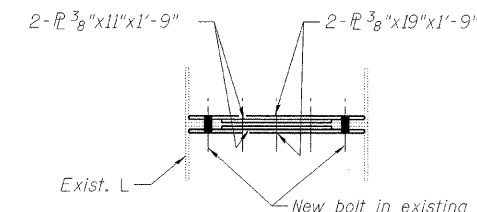
SECTION A-A



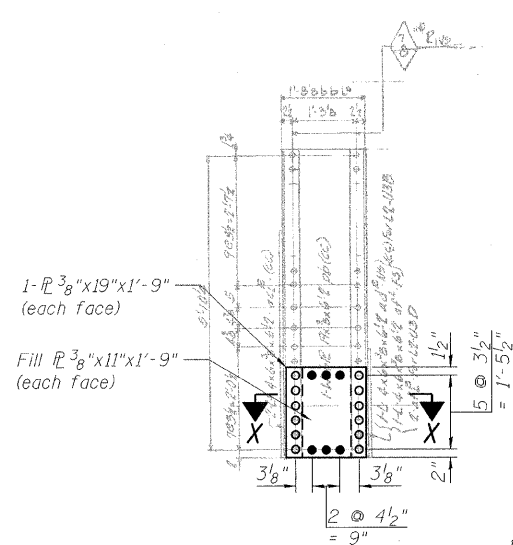
SECTION B-B



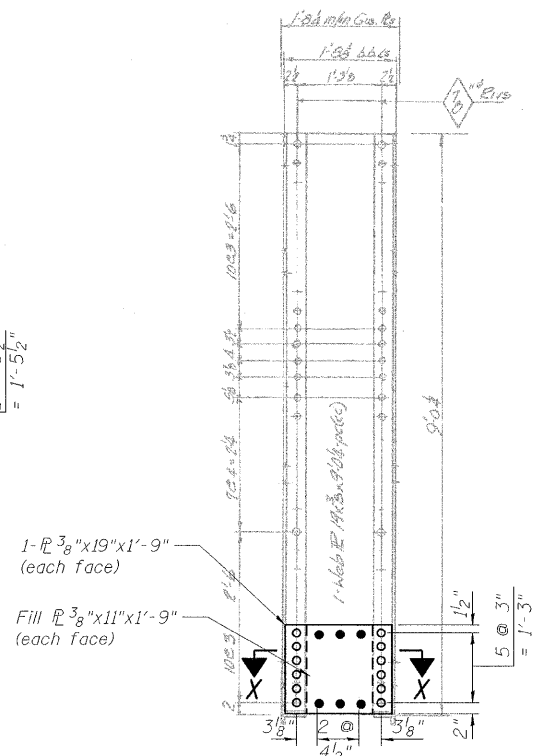
SECTION C-C



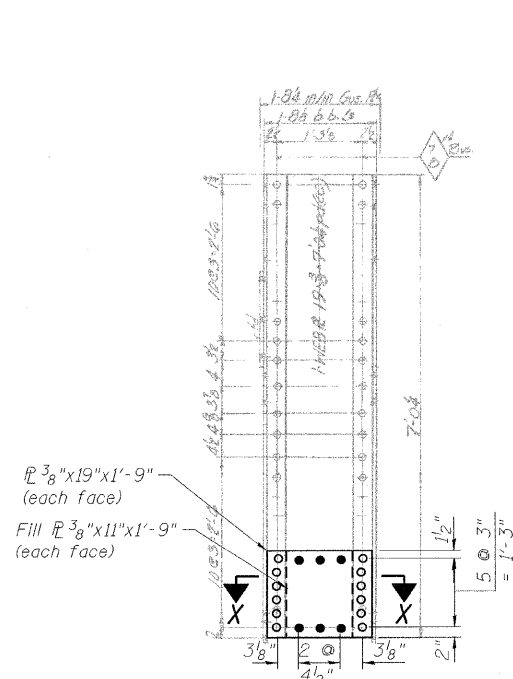
SECTION X-X



SECTION N-N  
POST L2-U3



SECTION P-P  
POST L10-U11



SECTION O-O  
POST L8-U9

LEGEND

- R&R Remove & replace
- Existing fastener to remain
- Hole to match existing location
- New hole
- Existing member to remain
- New member

Note:  
Portions of this drawing are extracted from original drawings for this bridge. Details shown are provided to illustrate the work to be performed.

TRUSS REPAIRS  
OUTSIDE TRUSS (SOUTHWEST)  
STRUCTURE NO. 016-2445

DESIGNED	P. PETERSON
CHECKED	J. GRAINAWI
DRAWN	D. C. PATEL
CHECKED	A. HAMMAD

**PB Americas, Inc.**  
230 WEST MONROE STREET,  
SUITE 900  
CHICAGO, IL. 60606

SHEET NO. 95 163 SHEETS	F.A.P R.T.E.	SECTION	COUNTY	TOTAL SHEETS	SHEET NO.
	389	2424.2B-R	COOK	398	176
			CONTRACT NO.	60D61	
FED. ROAD DIST. NO. 7 ILLINOIS FED. AID PROJECT					