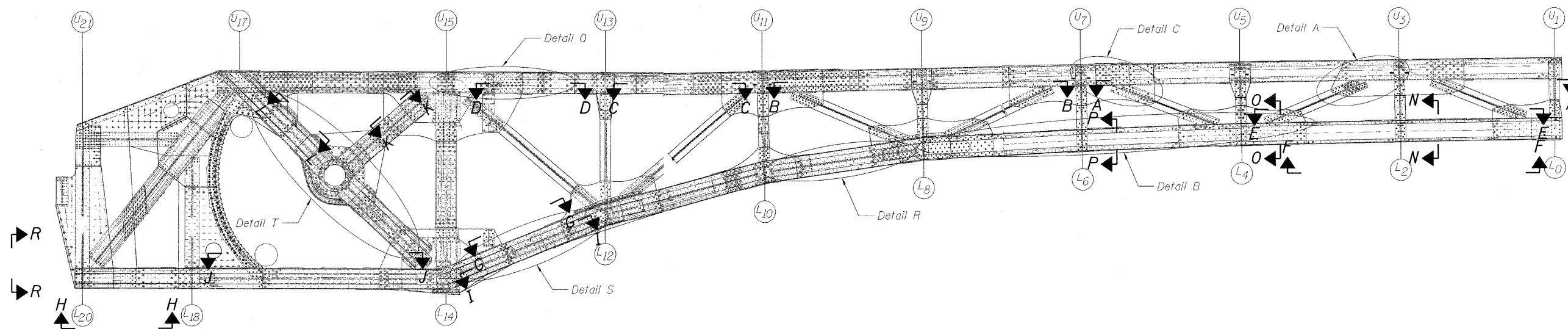
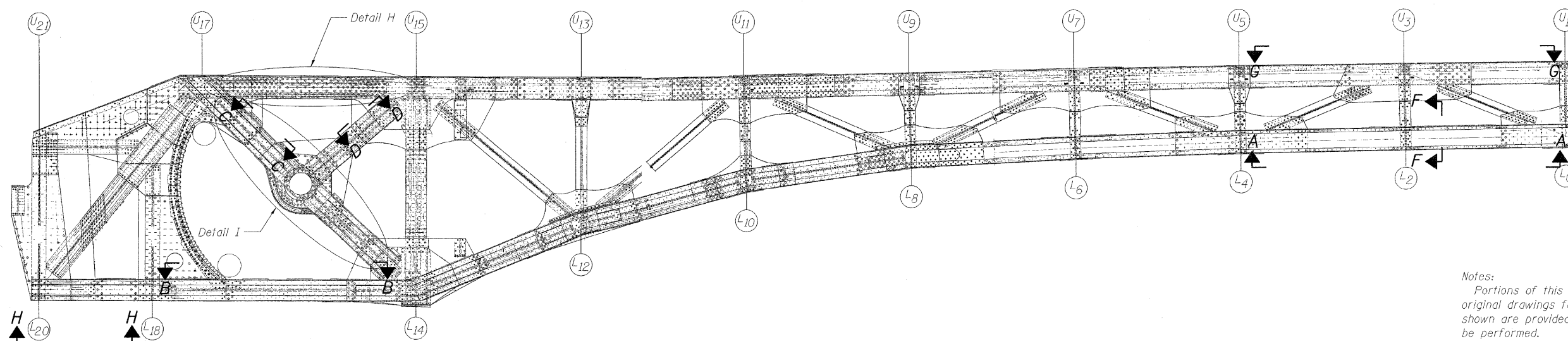


STATE OF ILLINOIS  
DEPARTMENT OF TRANSPORTATION



INSIDE TRUSS NORTHEAST LEAF

Looking South



OUTSIDE TRUSS NORTHEAST LEAF

Looking South

Notes:  
Portions of this drawing are extracted from original drawings for this bridge. Details shown are provided to illustrate the work to be performed.  
Provide temporary bracing and supports to maintain structural integrity during rehabilitation. Cost included in the cost of "Structural Steel Repair".  
For inside truss southwest leaf section and details see sheets 107-110, of 163.  
For outside truss southwest leaf section and details see sheets 111-112, of 163.

TRUSS REPAIRS (NORTHEAST)  
STRUCTURE NO. 016-2445

DESIGNED	D. V. PATEL
CHECKED	J. GRAINAWI
DRAWN	D. C. PATEL
CHECKED	A. HAMMAD

**PB Americas, Inc.**  
230 WEST MONROE STREET,  
SUITE 900  
CHICAGO, IL. 60606

SHEET NO. 106 163 SHEETS	F.A.P RTE.	SECTION	COUNTY	TOTAL SHEETS	SHEET NO.
	389	2424.2B-R	COOK	398	187
FED. ROAD DIST. NO. 7 ILLINOIS			CONTRACT NO. 60D61		
FED. AID PROJECT					