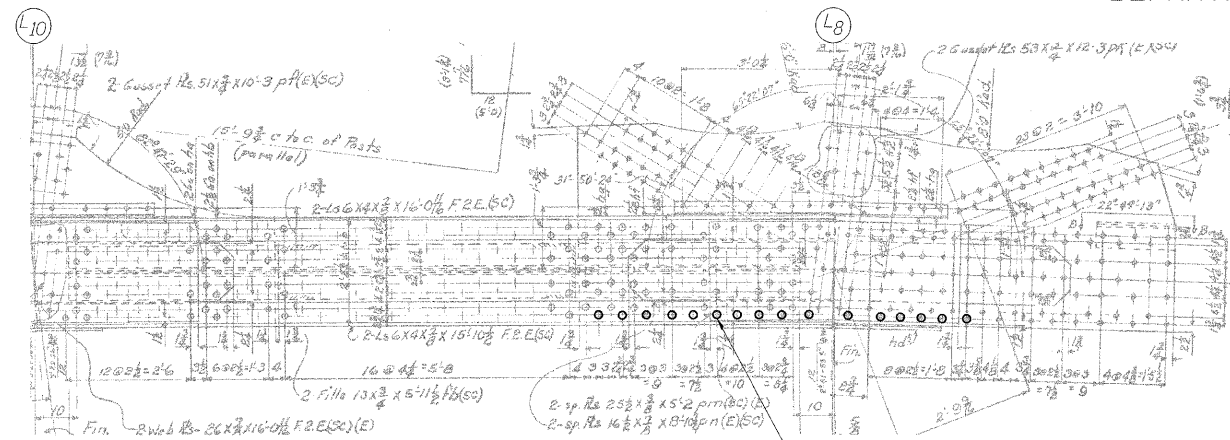
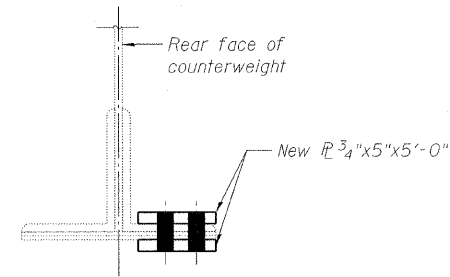


STATE OF ILLINOIS
DEPARTMENT OF TRANSPORTATION



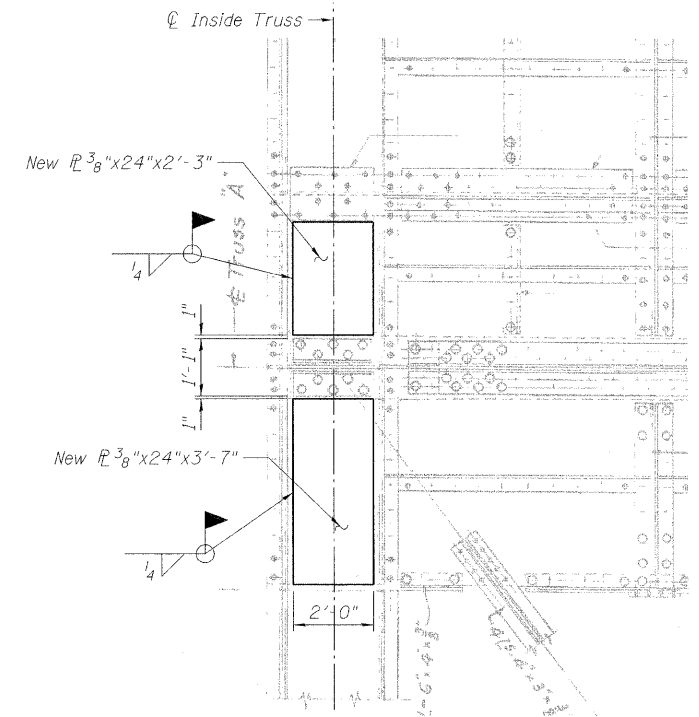
DETAIL R

Remove rivets & replace with H.S. bolts (South face, 16 Required)

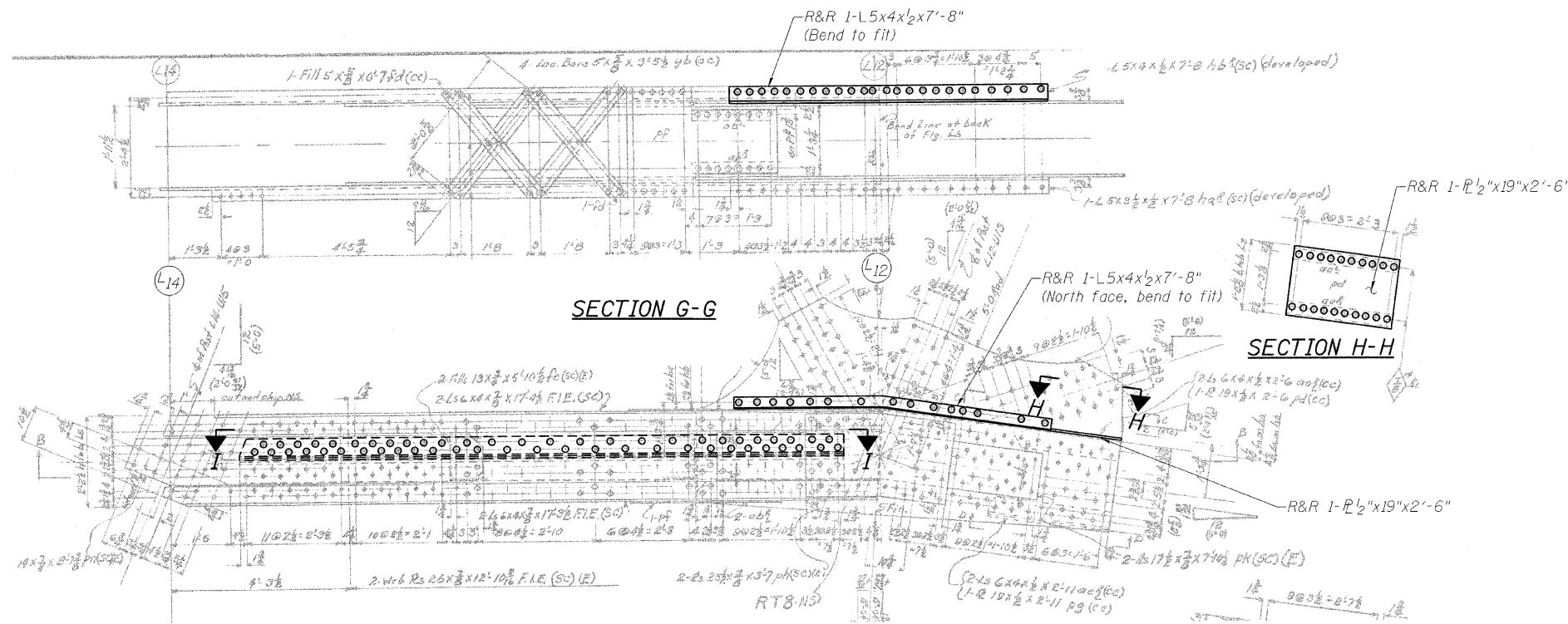


SECTION S-S*

* Remove rivets in bottom flange as necessary to straighten O.S. leg of L8x6x3/4 and bottom cover plates. Add splice PL. Replace rivets with H.S. bolts. Cost of straightening member is included in the cost of Structural Steel Repair.

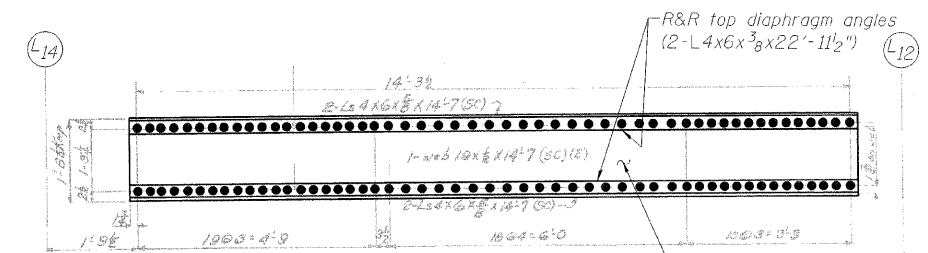


SECTION H-H



SECTION G-G

SECTION H-H

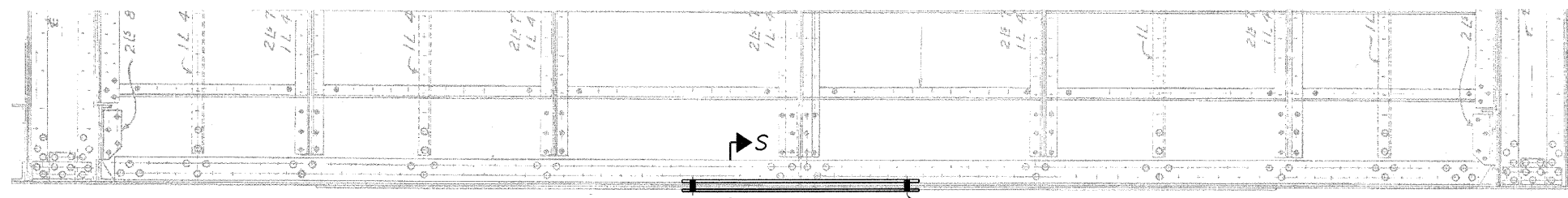


SECTION I-I

LEGEND

- R&R Remove & replace
- Existing fastener to remain
- Hole to match existing location
- New hole
- Existing member to remain
- New member

Note:
Portions of this drawing are extracted from original drawings for this bridge. Details shown are provided to illustrate the work to be performed.



SECTION R-R

(Back of counterweight - Looking West)

**TRUSS REPAIRS
INSIDE TRUSS (NORTHEAST)
STRUCTURE NO. 016-2445**

DESIGNED	D. V. PATEL
CHECKED	J. GRAINAWI
DRAWN	D. C. PATEL
CHECKED	A. HAMMAD

PB Americas, Inc.
230 WEST MONROE STREET,
SUITE 900
CHICAGO, IL. 60606

SHEET NO. 109	F.A.P. RTE.	SECTION	COUNTY	TOTAL SHEETS	SHEET NO.
	389	2424.2B-R	COOK	398	190
63 SHEETS			CONTRACT NO. 60D61		
FED. ROAD DIST. NO. 7		ILLINOIS	FED. AID PROJECT		