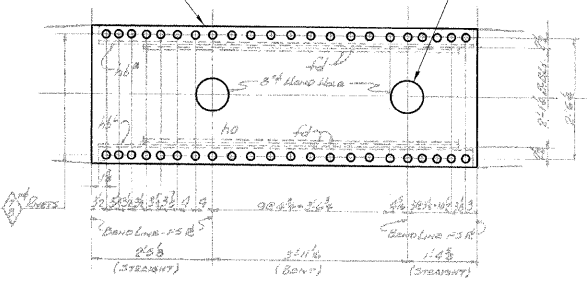
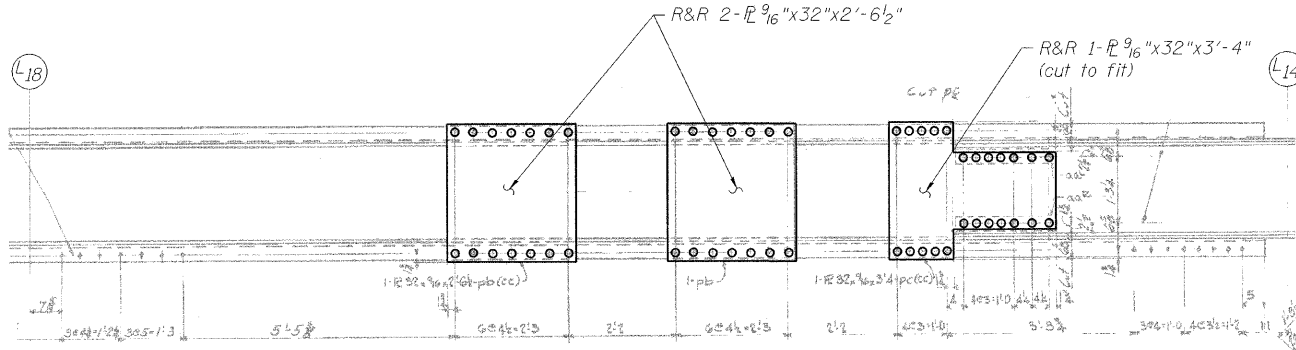
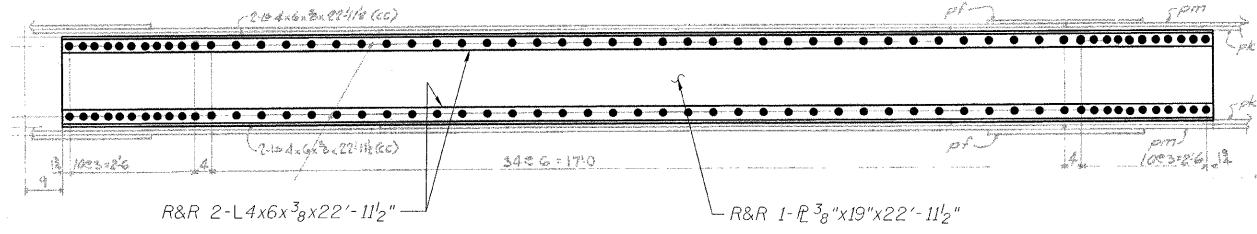


STATE OF ILLINOIS  
DEPARTMENT OF TRANSPORTATION

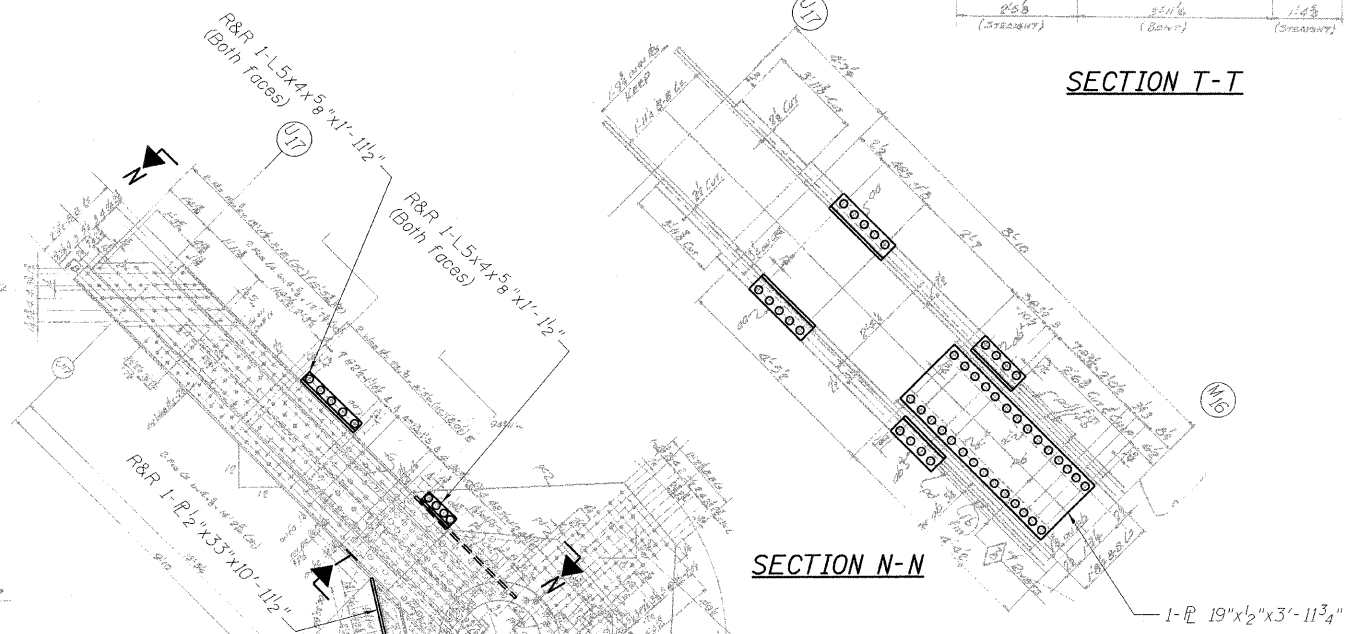
R&R 1- $\bar{L}$  $\frac{1}{2}$ "x33"x10'-11 $\frac{1}{2}$ "  
(Bend as shown)



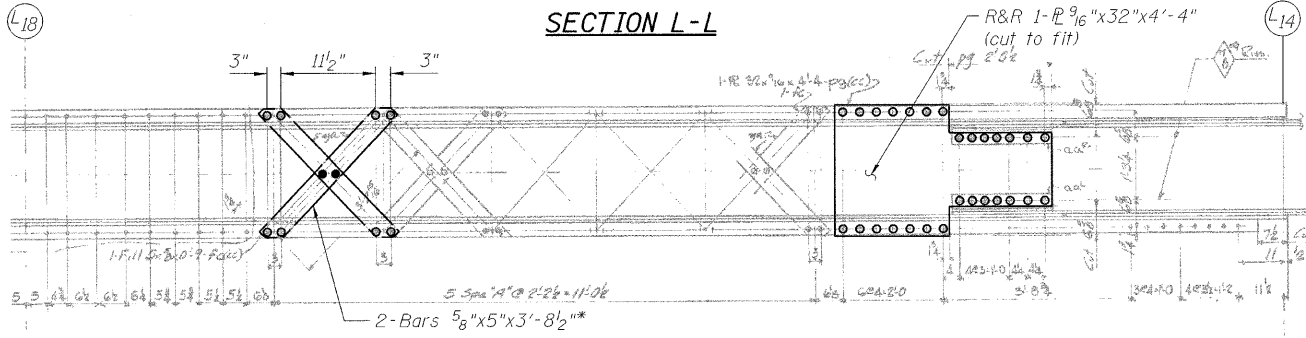
SECTION T-T



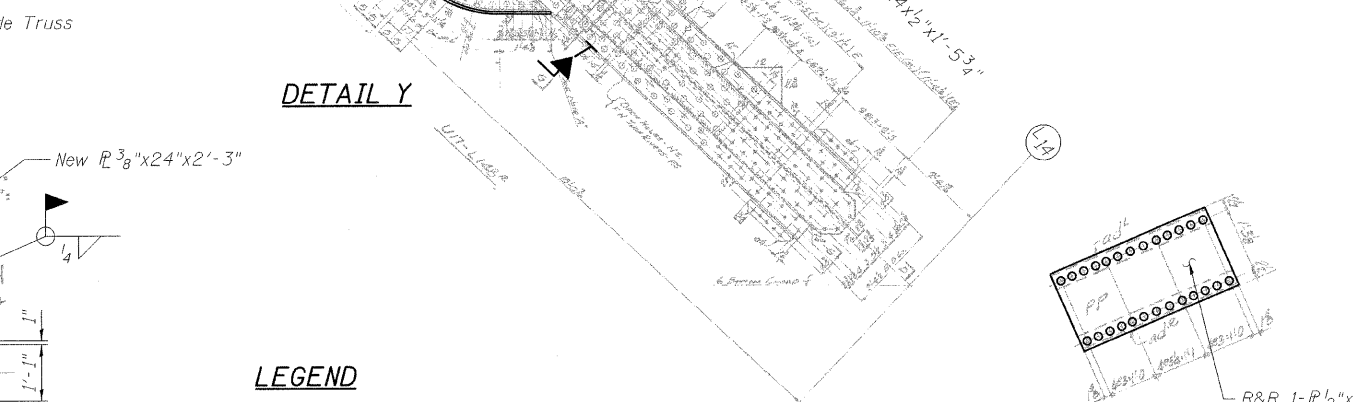
SECTION L-L



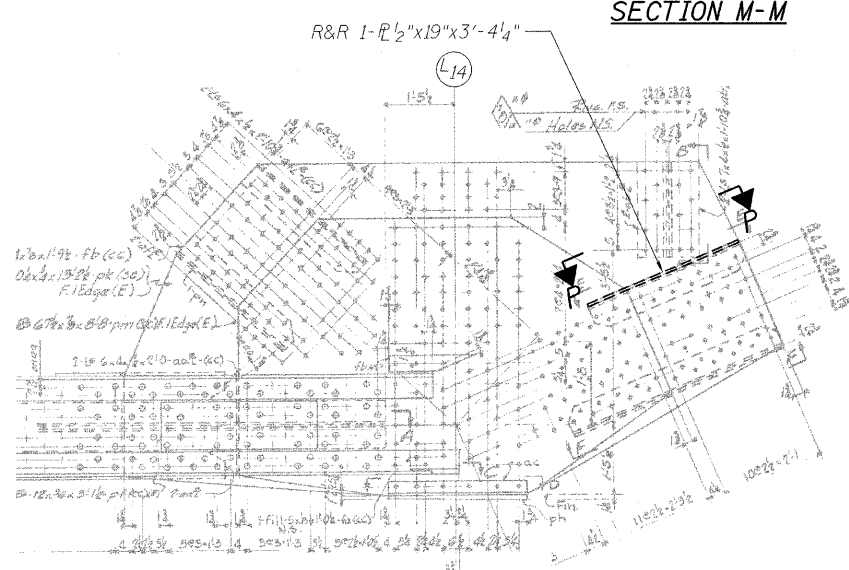
SECTION N-N



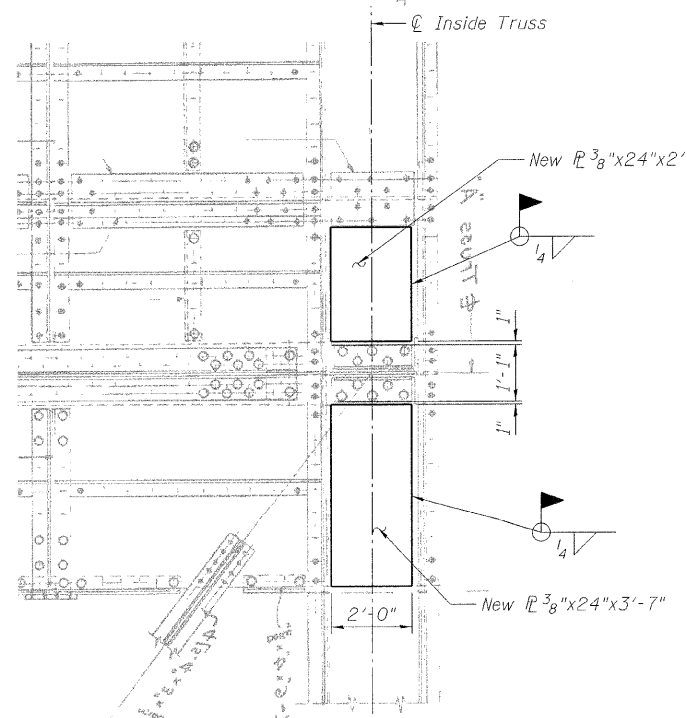
SECTION M-M



DETAIL Y



DETAIL Z



SECTION Q-Q

LEGEND

- R&R Remove & replace
- Existing fastener to remain
- Hole to match existing location
- New hole
- Existing member to remain
- New member

Note:  
Portions of this drawing are extracted from original drawings for this bridge. Details shown are provided to illustrate the work to be performed.

SECTION P-P

TRUSS REPAIRS  
INSIDE TRUSS (NORTHWEST)  
STRUCTURE NO. 016-2445

DESIGNED	P. PETERSON
CHECKED	J. GRAINAWI
DRAWN	D. C. PATEL
CHECKED	A. HAMMAD

\* Measured Center-Center of holes.  
Proposed bar length and shape  
to match existing bars.

**PB Americas, Inc.**  
230 WEST MONROE STREET,  
SUITE 900  
CHICAGO, IL. 60606

SHEET NO. 118	F.A.P R.T.E. 389	SECTION 2424.2B-R	COUNTY COOK	TOTAL SHEETS 398	SHEET NO. 199
163 SHEETS	CONTRACT NO. 60D61		ILLINOIS FED. AID PROJECT		

T:\16843A\Structural\Cadd\Pre-final\EB\_Plans\0162445-60D61-118-TRR.dgn 05-JUN-2008 10:02