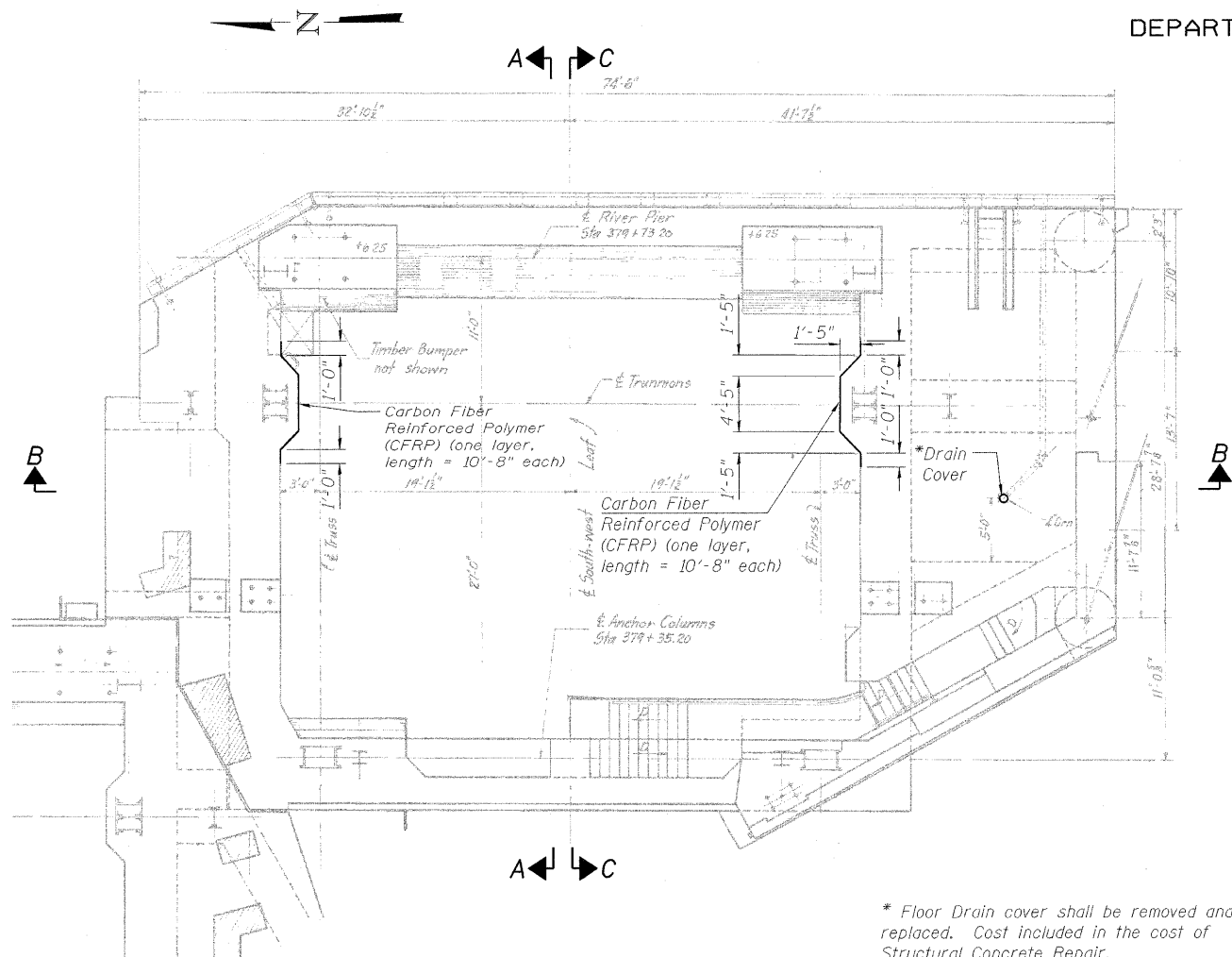
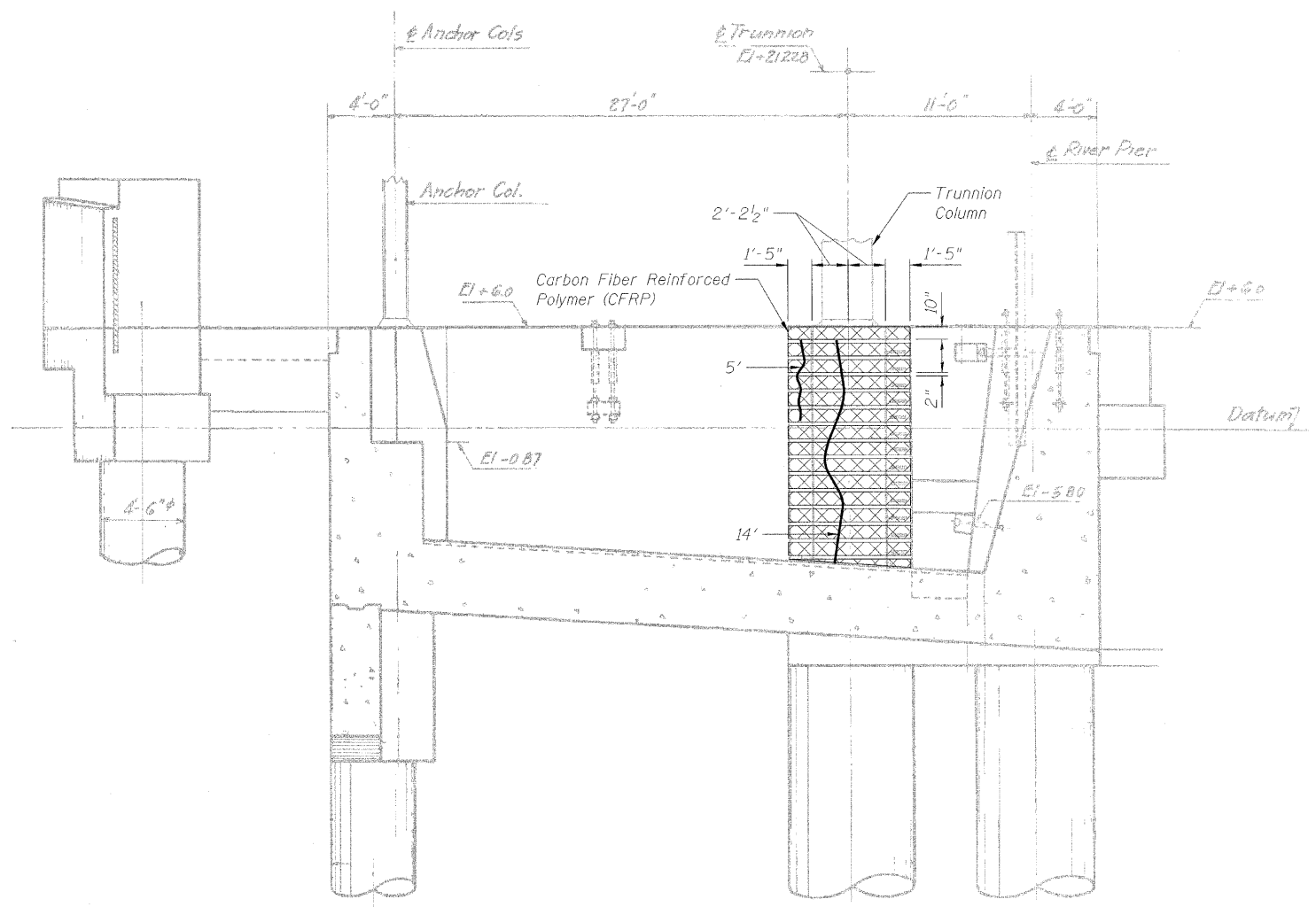


STATE OF ILLINOIS
DEPARTMENT OF TRANSPORTATION



SOUTHWEST COUNTERWEIGHT PIT PLAN

* Floor Drain cover shall be removed and replaced. Cost included in the cost of Structural Concrete Repair.



SECTION A-A

Notes:
Portions of this drawing are extracted from original drawings for this bridge. Details shown are provided to illustrate the work to be performed.
Elevations are based on existing drawings. Contractor shall verify existing elevations and dimensions prior to ordering any material.
See sheet 149 of 163 for Section B-B and Section C-C.

- LEGEND**
- 6' → Epoxy Crack Injection
 - Carbon Fiber Reinforced Polymer (CFRP)

DESIGNED	A. HAMMAD
CHECKED	J. GRAINAWI
DRAWN	D. C. PATEL
CHECKED	A. HAMMAD

PB Americas, Inc.
230 WEST MONROE STREET,
SUITE 900
CHICAGO, IL. 60606

SHEET NO. 148	F.A.P RTE.	SECTION	COUNTY	TOTAL SHEETS	SHEET NO.
	389	2424.2B-R	COOK	398	229
163 SHEETS			CONTRACT NO. 60D61		
FED. ROAD DIST. NO. 7 ILLINOIS FED. AID PROJECT					

**WEST COUNTERWEIGHT
PIT REPAIR (SOUTHWEST)
STRUCTURE NO. 016-2445**

T:\18843\Structural\Cadd\Pre-final\EB_Plans\0162445-60D61-CPR-148.dgn 07-MAY-2009