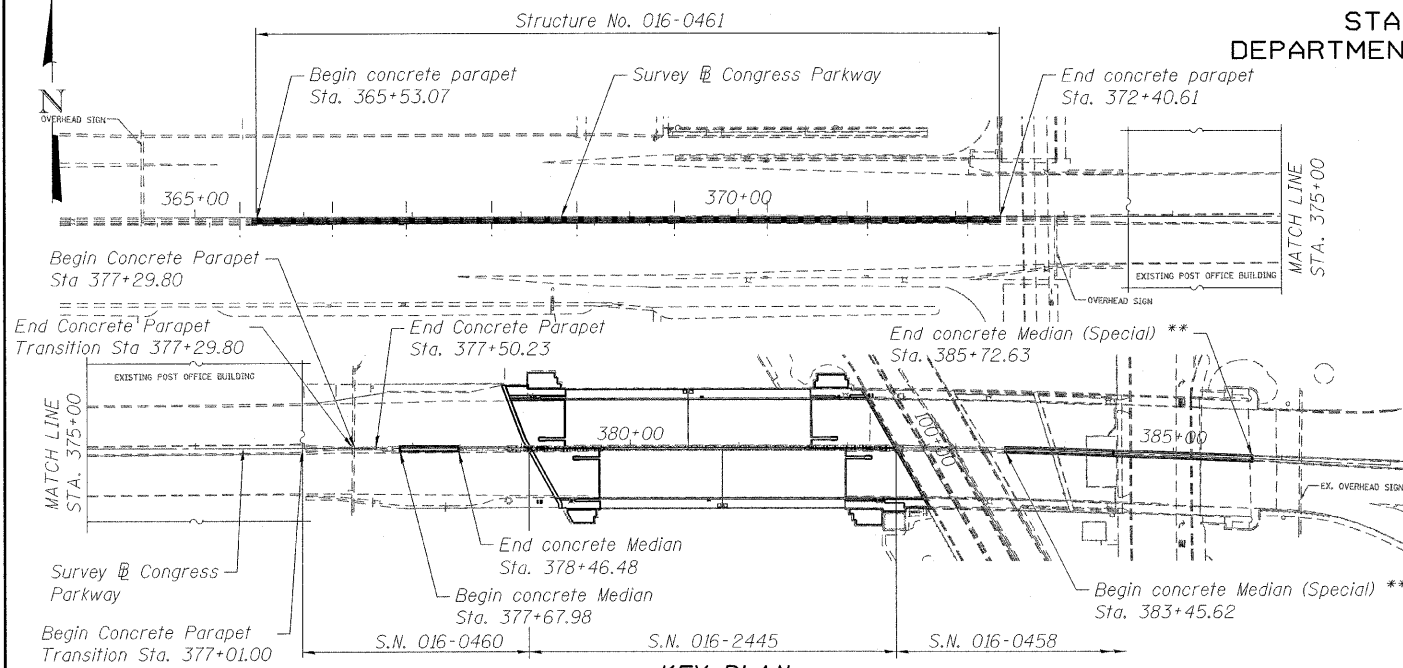
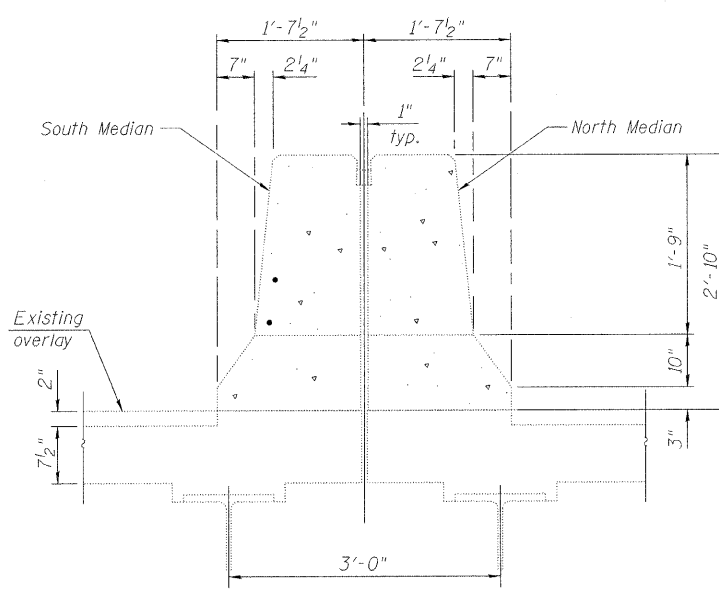


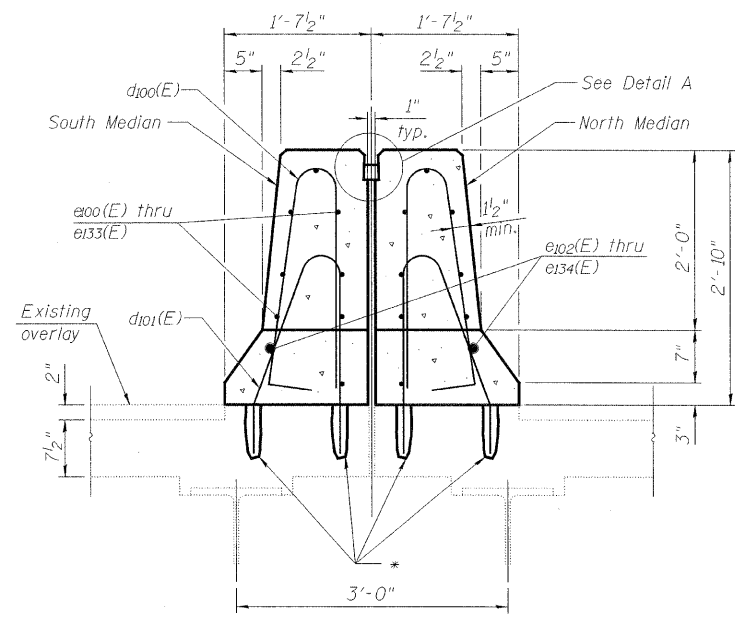
STATE OF ILLINOIS  
DEPARTMENT OF TRANSPORTATION



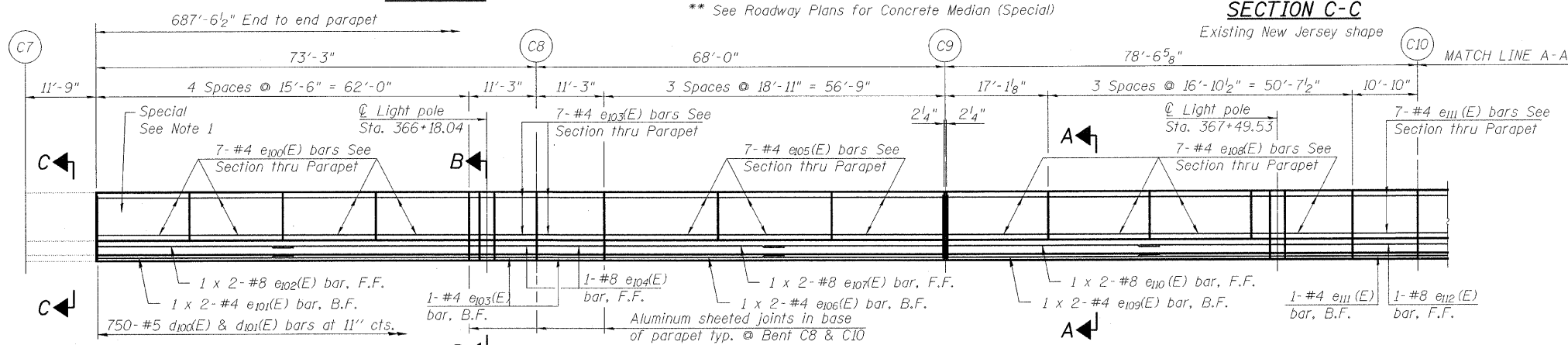
KEY PLAN



SECTION C-C

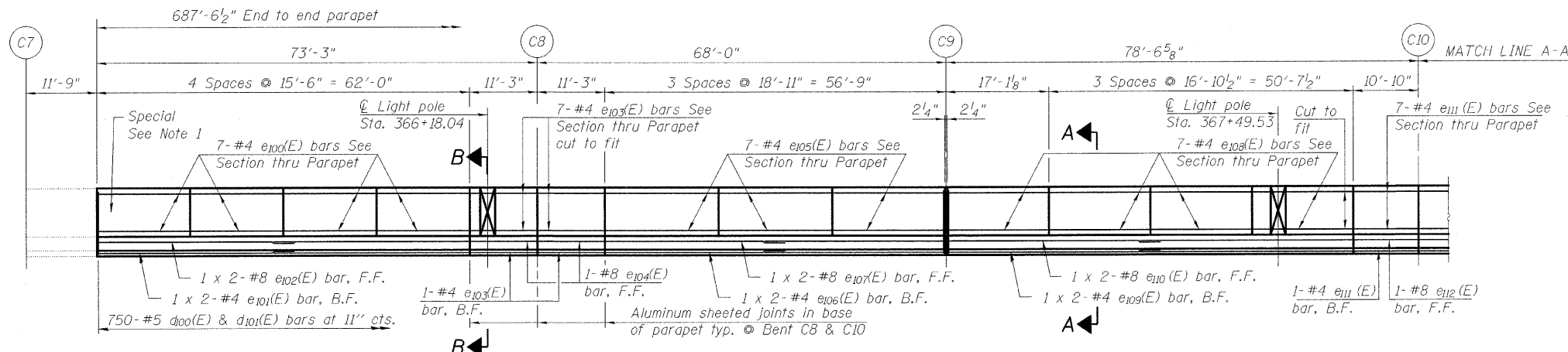


SECTION A-A



ELEVATION MEDIAN NORTH SIDE

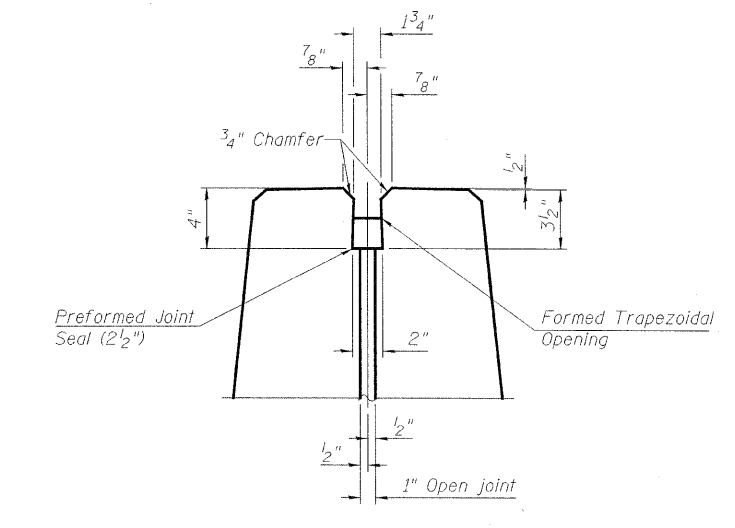
(Showing outside face on existing deck)



ELEVATION MEDIAN SOUTH SIDE

(Showing inside face on existing deck)

\* Core and set #5 d101(E) bar according to Article 509.06 of the Standard Specifications. Cored hole shall be roughened or scored per manufacturer's recommendations. Maximum depth of hole shall not exceed 7 1/2".



DETAIL A

SUPERSTRUCTURE DETAILS  
STRUCTURE NO. 016-0461

Note:  
1. At the median cross-over the first panel and the last panel of the bridge concrete parapets shall transition from the existing concrete barrier (new jersey shape) into the proposed bridge parapet constructed at STA. 365+53.07 and STA. 372+23.61. This work shall be paid for at the contract unit price for Concrete Superstructure.

Notes:  
See sheet 158 of 163 for Matchline A-A.  
See sheet 159 of 163 for bill of material.  
See roadway plans for parapet removal.

DESIGNED	A. HAMMAD
CHECKED	J. GRAINAWI
DRAWN	D. C. PATEL
CHECKED	A. HAMMAD

**PB Americas, Inc.**  
230 WEST MONROE STREET,  
SUITE 900  
CHICAGO, IL. 60606

SHEET NO. 157	F.A.P RTE.	SECTION	COUNTY	TOTAL SHEETS	SHEET NO.
	389	2424.2B-R	COOK	398	238
163 SHEETS			CONTRACT NO. 60D61		
FED. ROAD DIST. NO. 7 ILLINOIS FED. AID PROJECT					

T:\16843A\Structural\Cadd\Pre-final\EB\_Plans\0162445-60D61-MBR-201.dgn  
07-MAY-2009