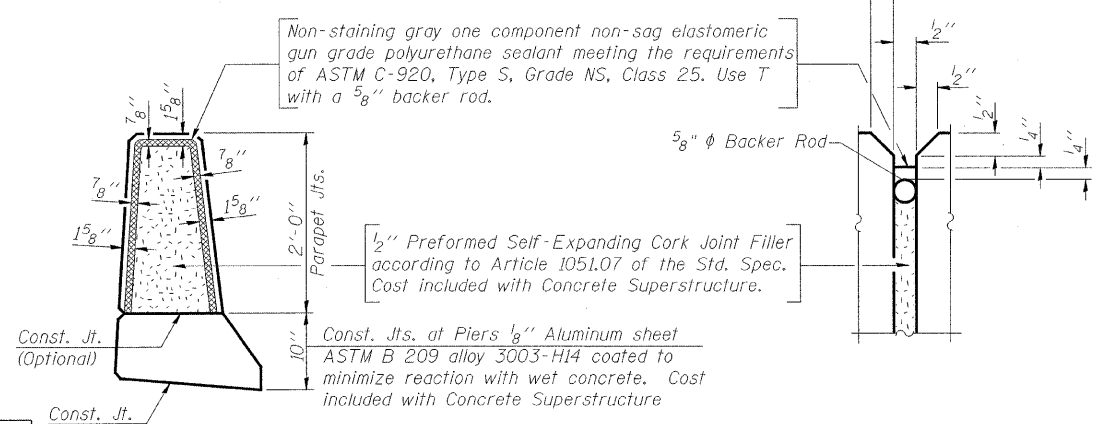
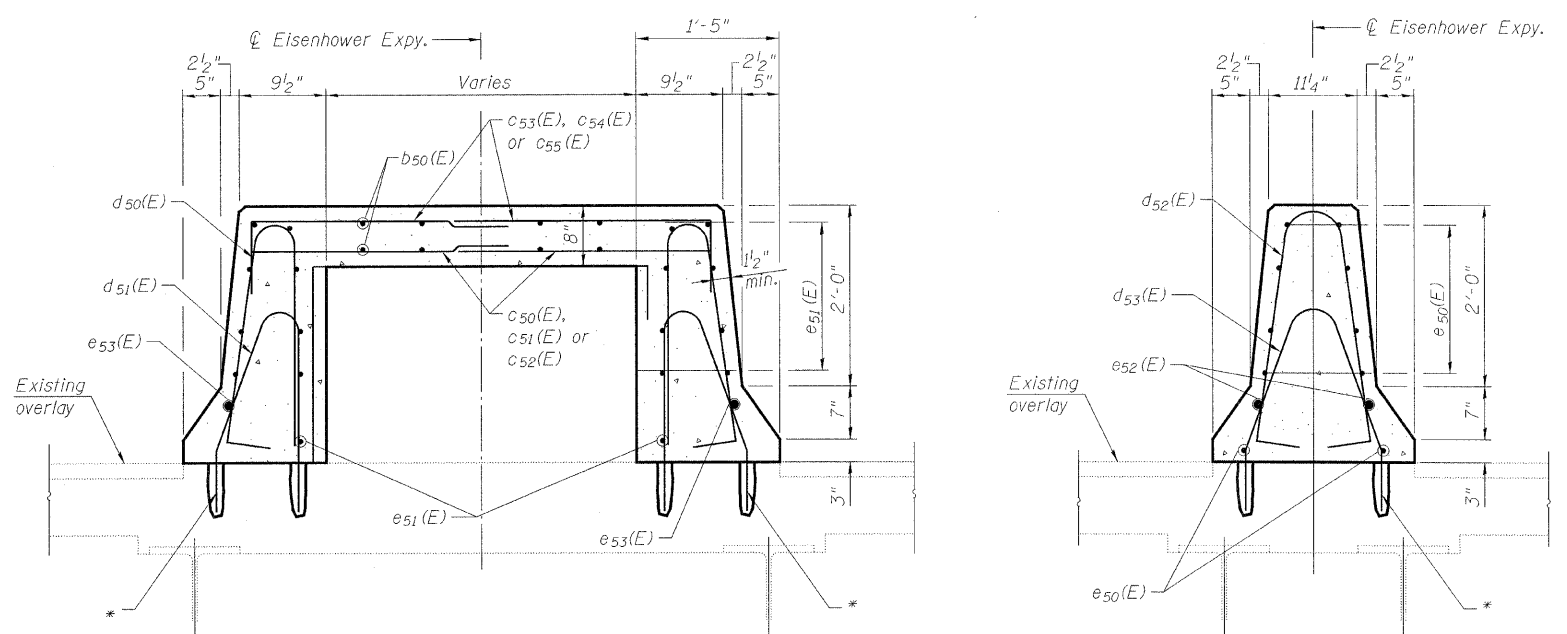
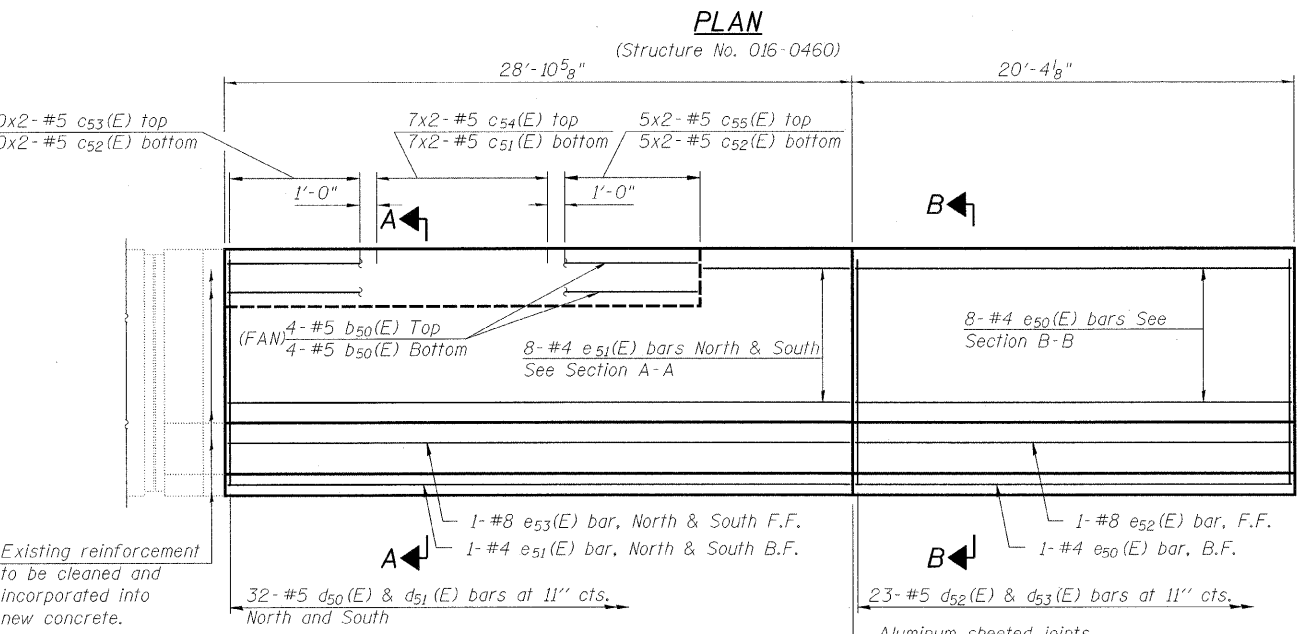
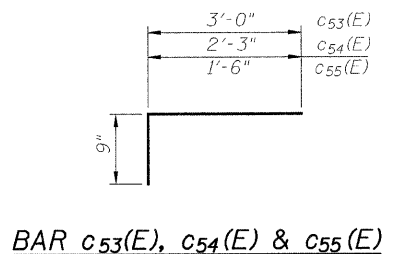
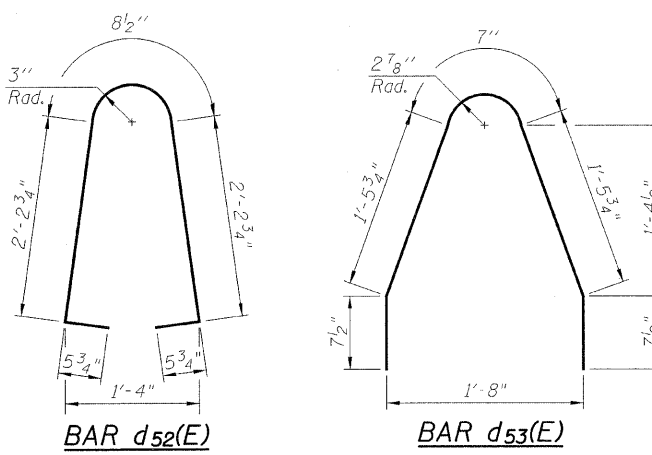
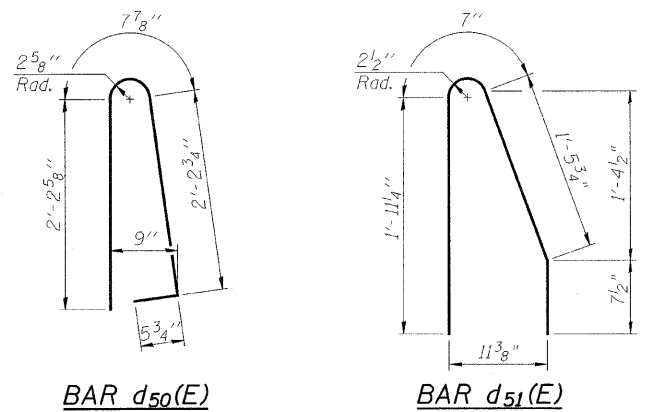
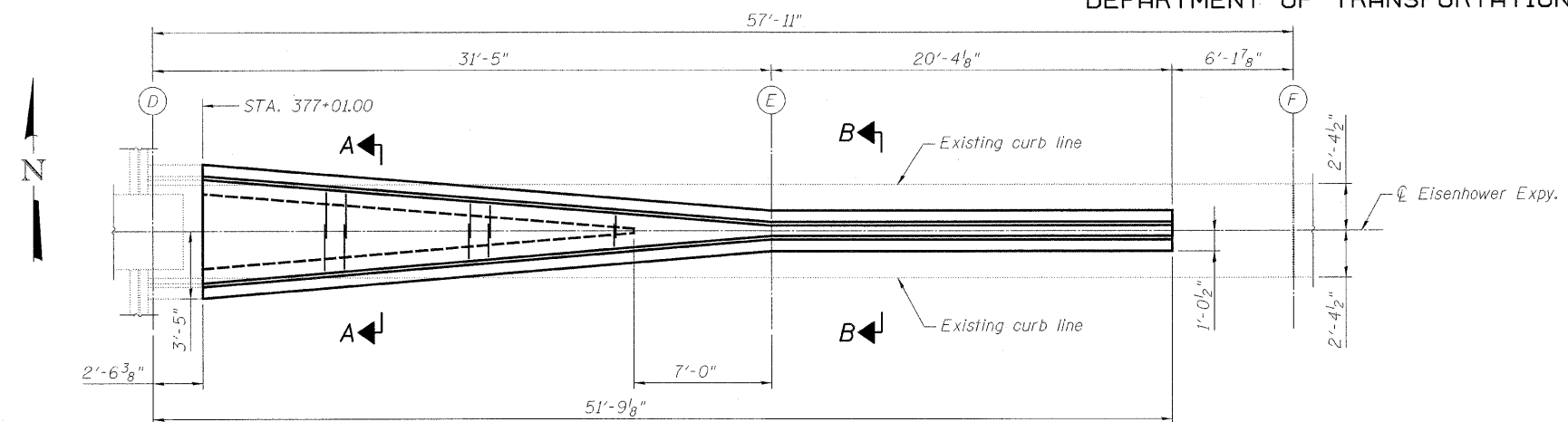


STATE OF ILLINOIS  
DEPARTMENT OF TRANSPORTATION

**SUPERSTRUCTURE  
BILL OF MATERIAL**

Bar	No.	Size	Length	Shape
b <sub>50</sub> (E)	8	#5	21'-6"	—
c <sub>50</sub> (E)	20	#5	3'-0"	—
c <sub>51</sub> (E)	14	#5	2'-3"	—
c <sub>52</sub> (E)	10	#5	1'-6"	—
c <sub>53</sub> (E)	20	#5	3'-9"	—
c <sub>54</sub> (E)	14	#5	3'-0"	—
c <sub>55</sub> (E)	10	#5	2'-3"	—
d <sub>50</sub> (E)	64	#5	5'-7"	—
d <sub>51</sub> (E)	64	#5	4'-8"	—
d <sub>52</sub> (E)	23	#5	6'-2"	—
d <sub>53</sub> (E)	23	#5	4'-10"	—
e <sub>50</sub> (E)	10	#4	20'-1"	—
e <sub>51</sub> (E)	18	#4	28'-8"	—
e <sub>52</sub> (E)	2	#8	20'-1"	—
e <sub>53</sub> (E)	2	#8	28'-8"	—
Reinforcement Bars, Epoxy Coated			Pound	1950
Concrete Superstructure			Cu. Yds.	11



DESIGNED	A. HAMMAD
CHECKED	J. GRAINAWI
DRAWN	D. C. PATEL
CHECKED	A. HAMMAD

**Notes:**  
Drains shall be located clear of all diaphragms. The exterior surfaces of the floor drains shall be painted with the finish coat as specified in the special provisions for Cleaning and Painting New Metal Structures. The exterior surfaces of the drains shall be cleaned according to Steel Structures Painting Council's Spec. SSPC-SP1 prior to painting. Fiberglass pipe shall conform to ASTM D 2996, with short-time rupture strength hoop tensile stress of 30,000 p.s.i. minimum.

**Note:**  
See roadway plans for existing parapet removal.

**PB Americas, Inc.**  
230 WEST MONROE STREET,  
SUITE 900  
CHICAGO, IL. 60606

SHEET NO. 160	F.A.P RTE. 389	SECTION 2424.2B-R	COUNTY COOK	TOTAL SHEETS 398	SHEET NO. 241
163 SHEETS			CONTRACT NO. 60D61		
FED. ROAD DIST. NO. 7   ILLINOIS   FED. AID PROJECT					

**SUPERSTRUCTURE DETAILS  
STRUCTURE NO. 016-0460**

T:\16843A\Structural\Cadd\Pre-final\EB\_Plans\0162445-60D61-MBR-204.dgn 07-MAY-2009