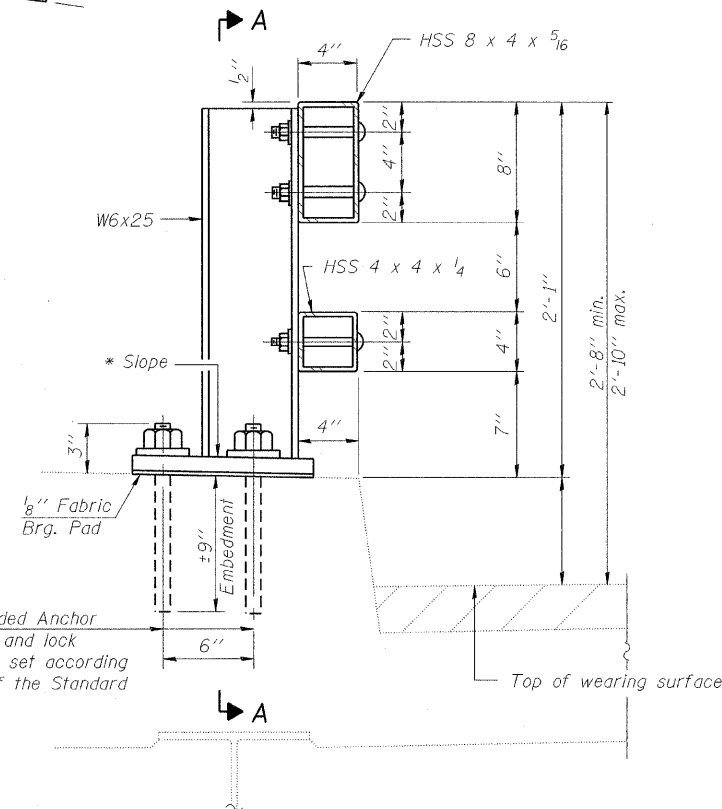
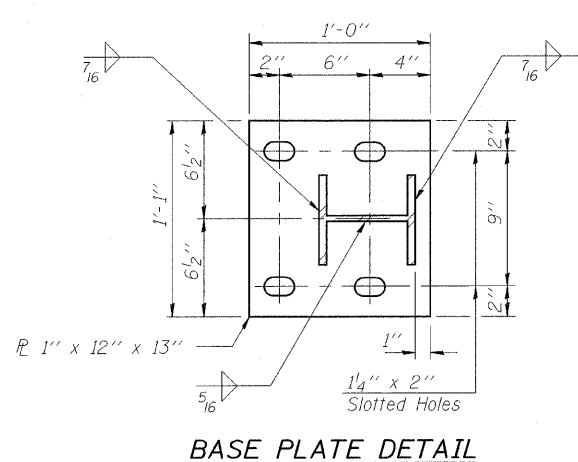


STATE OF ILLINOIS  
DEPARTMENT OF TRANSPORTATION

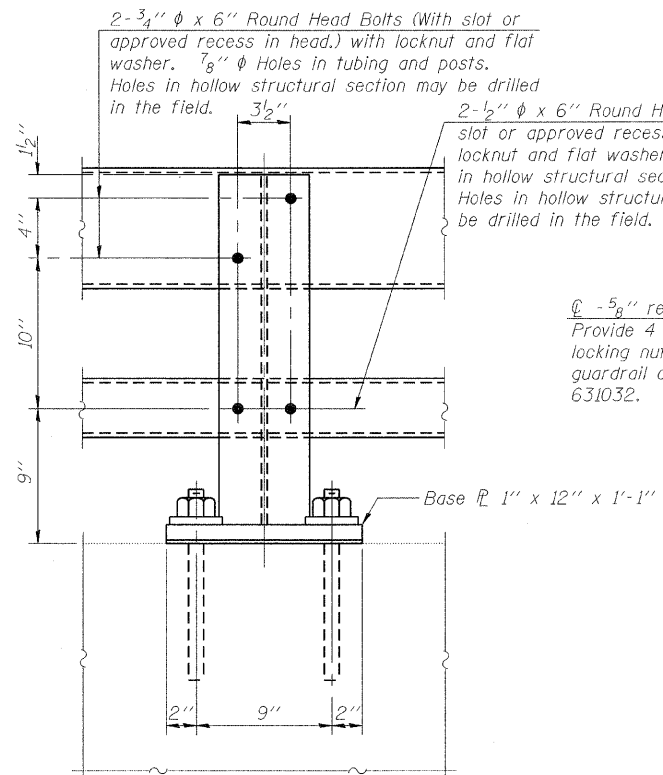
\* Cut bottom end of post to curb slope.



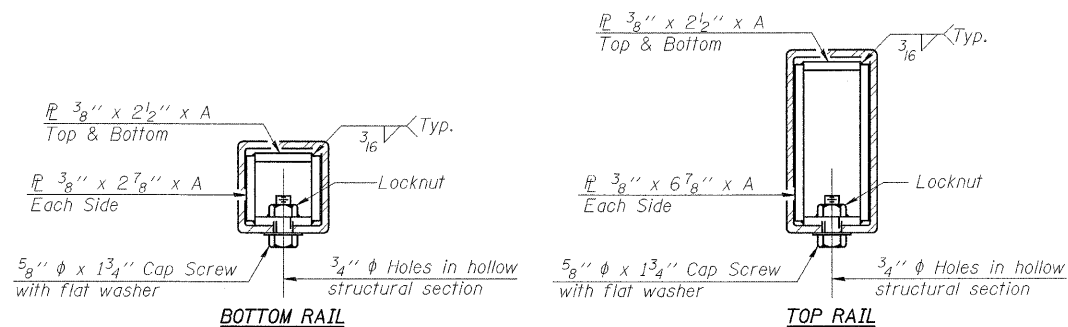
SECTION AT RAIL POST



BASE PLATE DETAIL

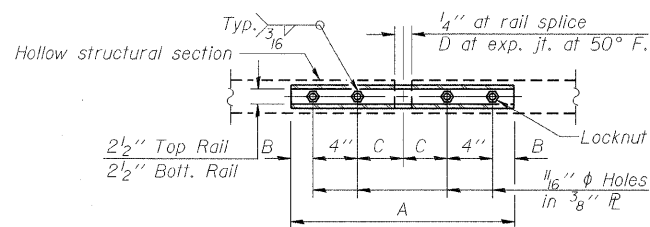


SECTION A-A

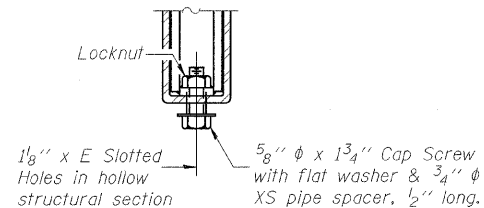


SECTIONS AT RAIL SPLICE

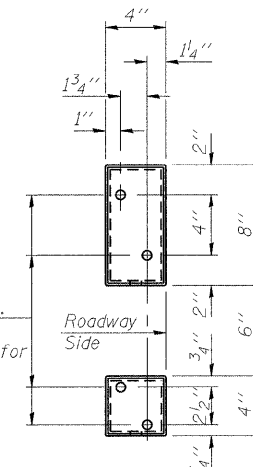
(6'-3" Maximum Post Spacing)



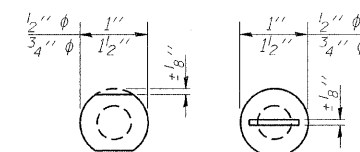
PLAN-BOTT. SPLICE TYPICAL



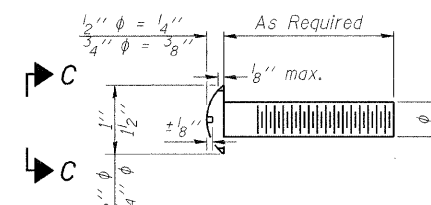
RAIL SPLICE CONNECTION AT EXPANSION JT.



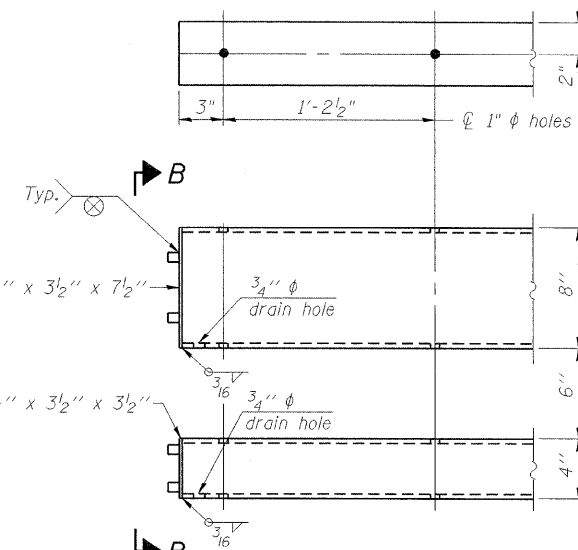
VIEW B-B



VIEW C-C



DETAIL OF 1/2"  $\phi$  & 3/4"  $\phi$  ROUND HEAD BOLTS



END OF RAIL DETAILS

Notes:

- All field drilled holes shall be coated with an approved zinc rich paint before erection.
- Posts shall not be located closer than 1'-3" to an existing bridge expansion joint or end of bridge.
- Steel Bridge Rail expansion joint shall be provided between any two (2) posts which span a bridge expansion joint. Bolts located at expansion joint shall be provided with locknuts and shall be tightened only to a point that will allow railing movement.
- Provide one 1/8" and two 1/16" steel shims for 25% of the posts. Shims shall be similar to base plates in size and holes.
- All steel rail elements shall be galvanized according to Article 509.05 of the Standard Specifications.

SPLICE DIMENSIONS

T	D	A	B	C	E
≤ 4"	2 1/2"	1'-8"	2"	4"	2 1/2"
> 4" ≤ 6 1/2"	3 3/4"	2'-0"	2 1/2"	5 1/2"	3 1/2"
> 6 1/2" ≤ 9"	5"	2'-4"	3 1/2"	6 1/2"	9"
> 9" ≤ 13"	7"	2'-10"	4 1/2"	8 1/2"	11"
Rail Splice	1/4"	1'-8"	2"	4"	—

T = Total movement at expansion joint as shown on the design plans.

BILL OF MATERIAL

Item	Unit	Quantity
Steel Railing, Type 2399	Foot	161

STEEL RAILING, TYPE 2399  
SOUTHWEST FIXED SPANS  
STRUCTURE NO. 016-0460

SHEET NO.	F.A.P RTE.	SECTION	COUNTY	TOTAL SHEETS	SHEET NO.
161	389	2424.2B-R	COOK	398	242
				CONTRACT NO. 60D61	
FED. ROAD DIST. NO. 7 ILLINOIS FED. AID PROJECT					

**PB Americas, Inc.**  
230 WEST MONROE STREET,  
SUITE 900  
CHICAGO, IL. 60606

SHEET NO. 161  
163 SHEETS