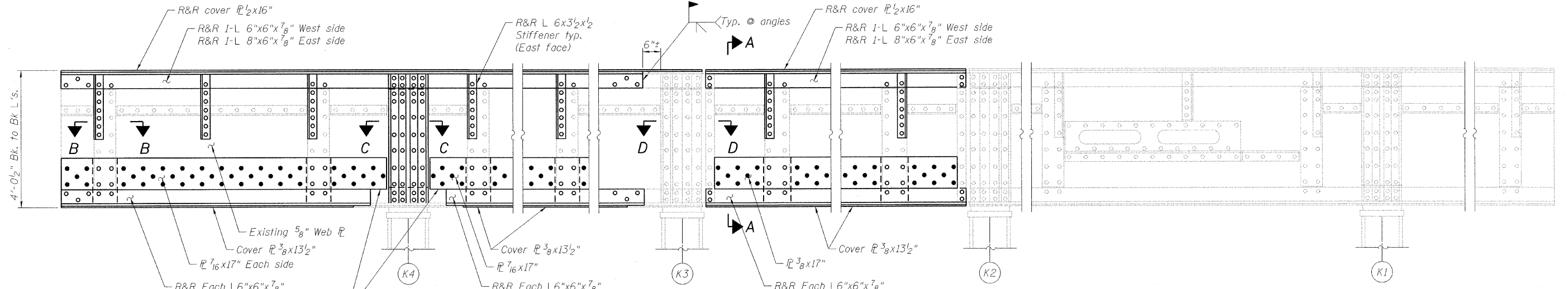


STATE OF ILLINOIS  
DEPARTMENT OF TRANSPORTATION

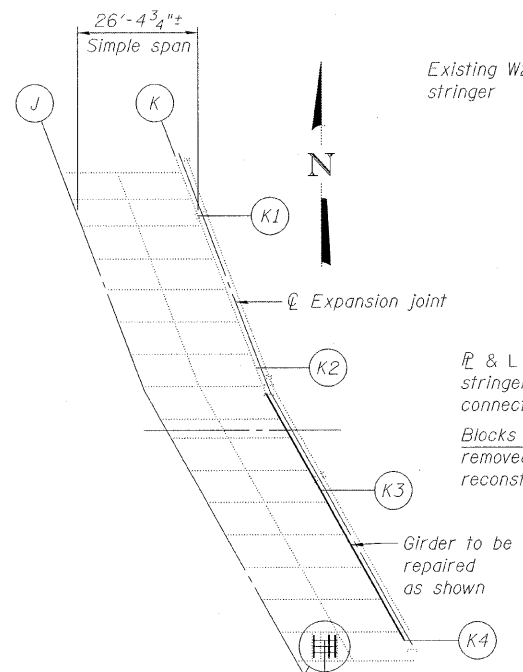


**ELEVATION GIRDER K**

(Looking West)  
(4 1/4" Maximum alternate bolt spacing in flange angles, cover PL's and web PL's)

**REACTION TABLE**

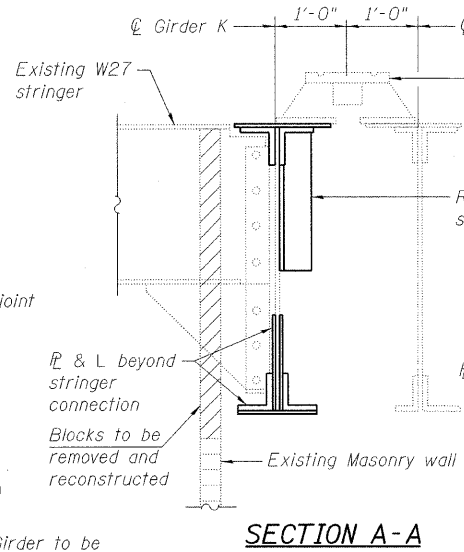
Stringer	R @
Typical	18 k



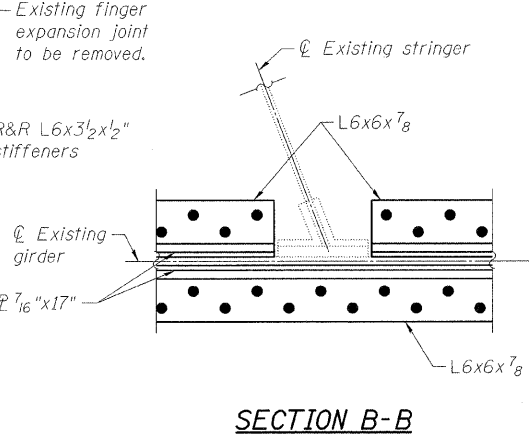
**PARTIAL PLAN**

Remove existing diaphragm supporting the traffic barrier and replace with new diaphragm see details on sheet 163 of 163

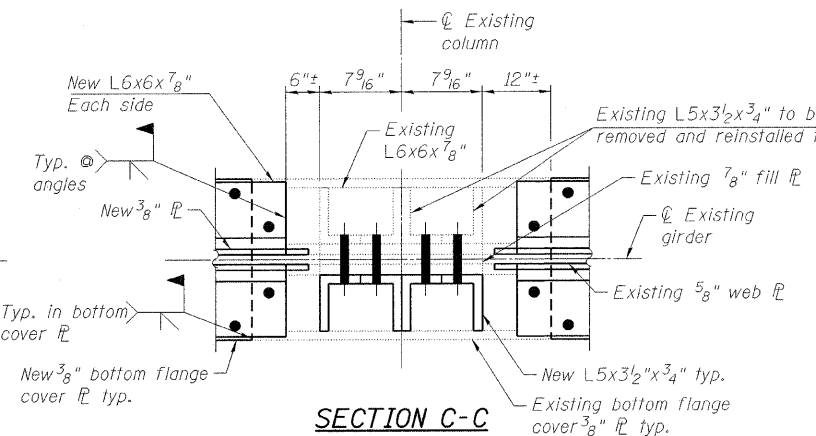
DESIGNED	A. HAMMAD
CHECKED	J. GRAINAWI
DRAWN	D. C. PATEL
CHECKED	A. HAMMAD



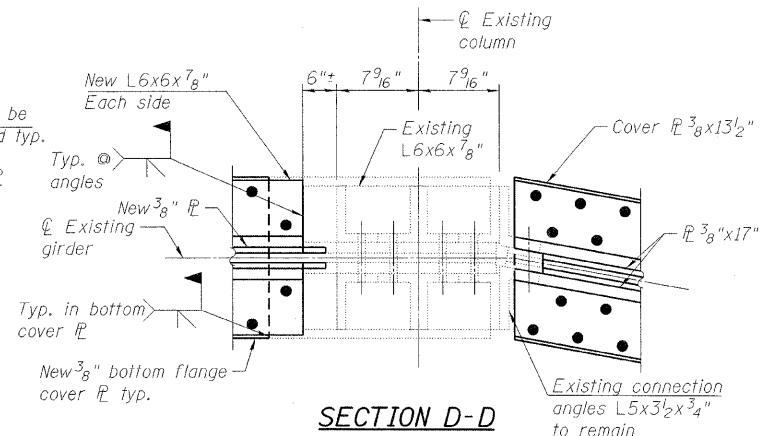
**SECTION A-A**



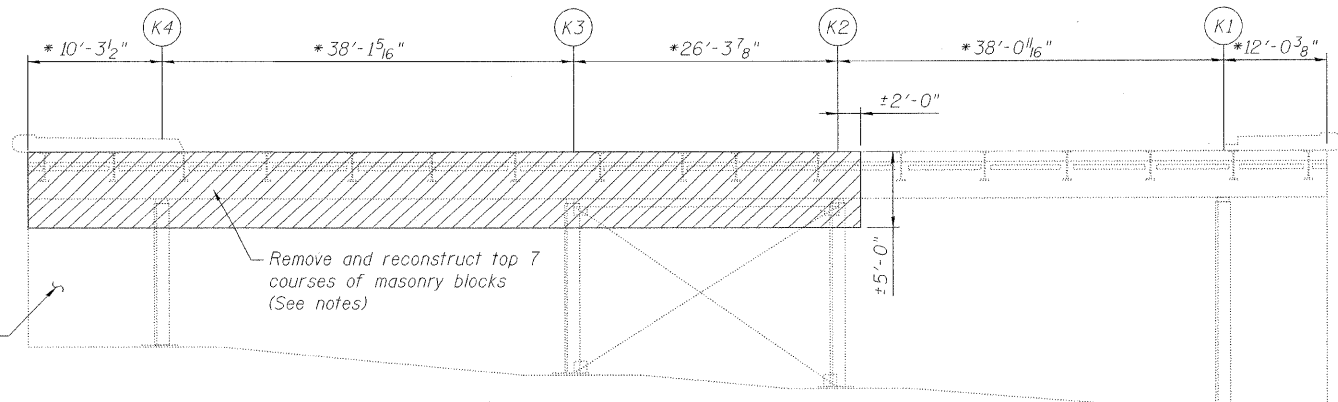
**SECTION B-B**



**SECTION C-C**



**SECTION D-D**



**ELEVATION BENT K**

(Looking West)

\* Based on existing drawing. Contractor shall field verify prior to fabrication and ordering of material.

Notes:  
Girder/stringer ends shall be temporarily supported during repairs. Cost is included in the cost of Structural Steel Repair.  
Masonry blocks that are damaged during the removal shall be replaced in-kind at Contractor's expense.

**BILL OF MATERIAL**

Item	Unit	Quantity
Structural Steel Repair	Pound	17450
Masonry Wall Construction	Sq. Ft.	385

**LEGEND**

- Existing fastener to remain
- Hole to match existing location
- New hole
- Existing member to remain
- New member

**FRAMING DETAILS (GIRDER K)  
FIXED SPANS  
STRUCTURE NO. 016-0460**

**PB Americas, Inc.**  
230 WEST MONROE STREET,  
SUITE 900  
CHICAGO, IL. 60606

SHEET NO. 162	F.A.P RTE. 389	SECTION 2424.2B-R	COUNTY COOK	TOTAL SHEETS 398	SHEET NO. 243
163 SHEETS			CONTRACT NO. 60D61		
FED. ROAD DIST. NO. 7 ILLINOIS FED. AID PROJECT					