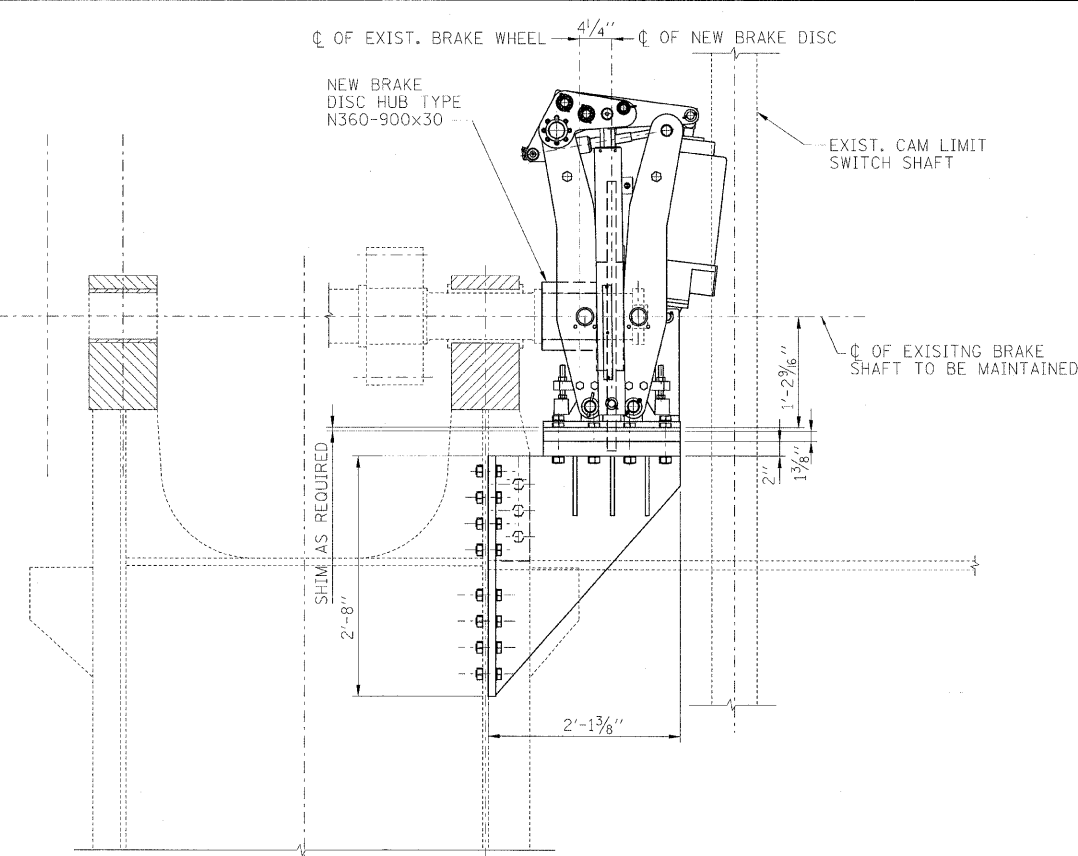


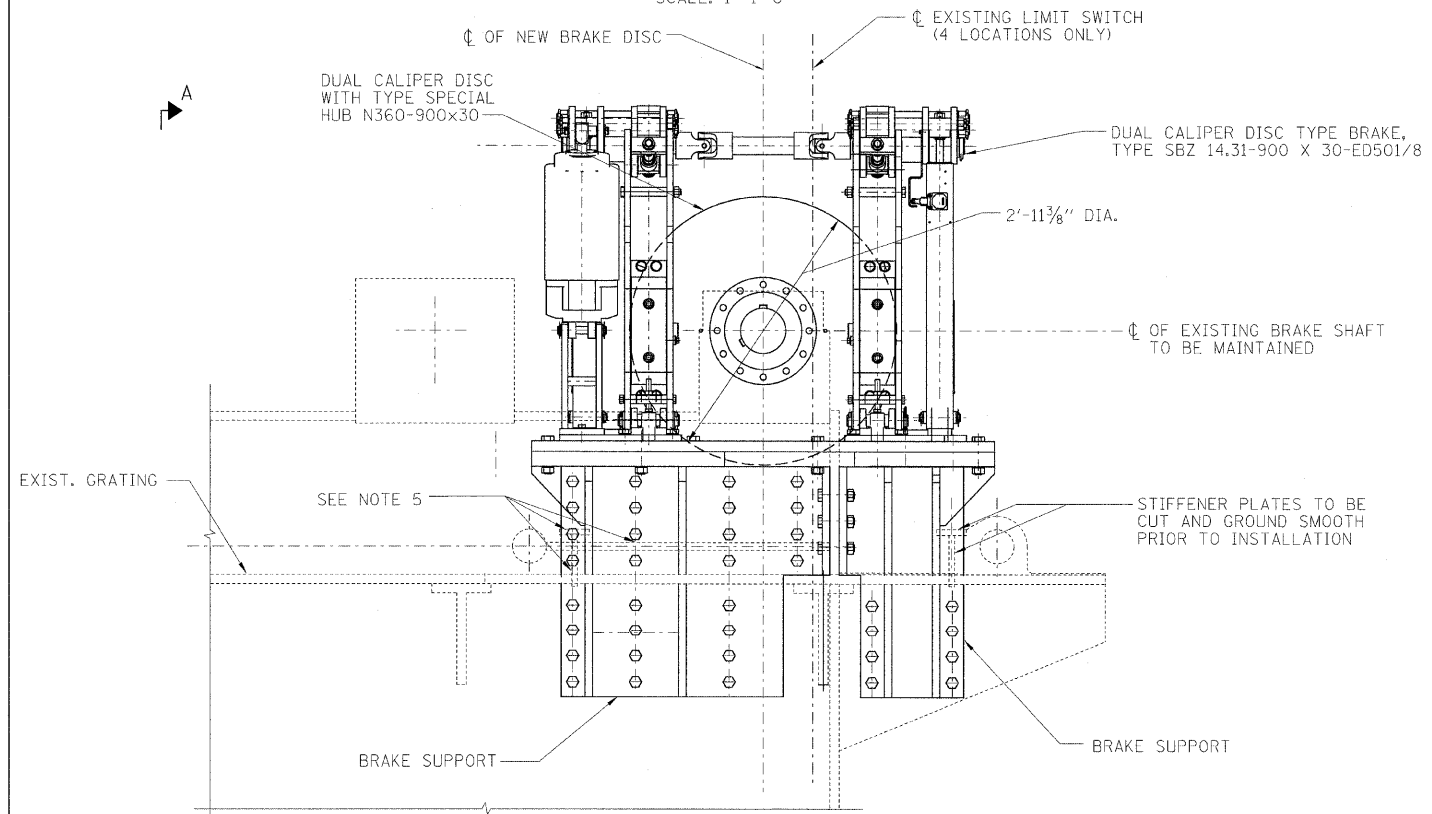
PLAN

SCALE: 1"=1'-0"



SECTION A-A

SCALE: 1"=1'-0"



ELEVATION

SCALE: 1"=1'-0"

LEGEND:

- NEW MEMBER
- - - - - EXISTING MEMBER TO REMAIN

NOTES:

1. FOR GENERAL NOTES, SEE SHEET M-01.
2. WORK THIS DWG WITH SHEET M-09.
3. CONTRACTOR SHALL FIELD VERIFY ALL DIMENSIONS BEFORE BEGINNING FABRICATION AND INSTALLATION.
4. NEW MACHINERY BRAKES SHALL BE BUBENZER'S DUAL CALIPER DISC TYPE BRAKE, TYPE SBZ 14.31-900 X 30-ED 501/8 OR APPROVED EQUAL.
5. THE MACHINERY SUPPORT STIFFENER PLATES THAT INTERFERE WITH THE BRAKE SUPPORTS SHALL BE CUT. THE AREA SHALL BE GROUND SMOOTH, PRIMED AND PAINTED PRIOR TO INSTALLATION OF NEW MACHINERY BRAKE SUPPORT.
6. NEW KEYS SHALL BE PROVIDED WITH BRAKE DISC TO MATCH EXISTING KEY WAYS.
7. CONTRACTOR TO CUT HOLES IN BRAKE SUPPORT TO ACCOMMODATE CALIPER DISC.

PB Americas, Inc.
230 WEST MONROE STREET,
SUITE 900
CHICAGO, IL. 60606

USER NAME = sha-ma	DESIGNED - V. LEVIT	REVISED -
FILE NAME = D168d61-sht-mco-08.dgn	DRAWN - V. LEVIT	REVISED -
PLOT SCALE = NONE	CHECKED - D. NYARKO	REVISED -
PLOT DATE = 5/7/2009	DATE - MAY 8, 2009	REVISED -

**STATE OF ILLINOIS
DEPARTMENT OF TRANSPORTATION**

MACHINERY BRAKES	
SCALE: AS SHOWN	SHEET NO. M-08 OF M-27 SHEETS
STA. 379+06.09	TO STA. 382+45.28

F.A.P. RTE.	SECTION	COUNTY	TOTAL SHEETS	SHEET NO.
389	2424-2B-R	COOK	398	252
CONTRACT NO. 60D61				
FED. ROAD DIST. NO. 1 ILLINOIS FED. AID PROJECT				