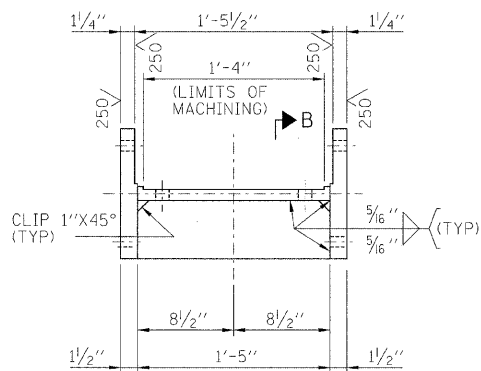


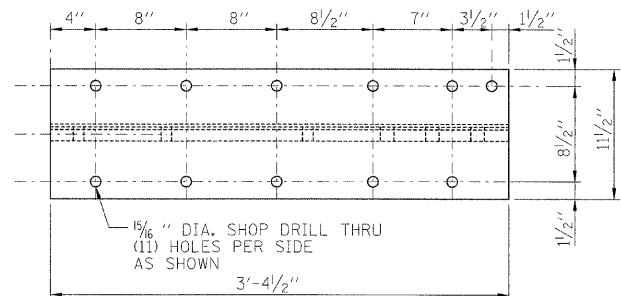
PLAN

SUB-DRILL 1/8\"/>

SUB-DRILL 1-3/16\"/>

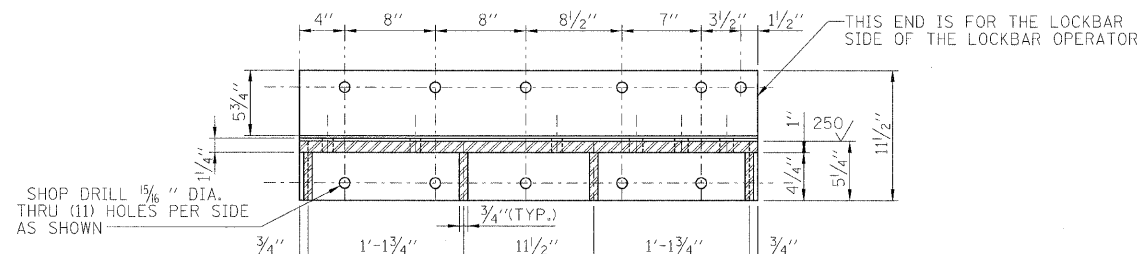


SECTION A-A



ELEVATION

1/8\"/>



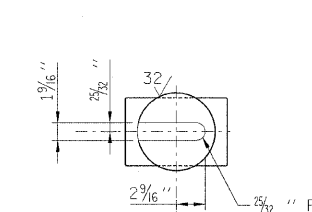
SECTION B-B

SHOP DRILL 1/8\"/>

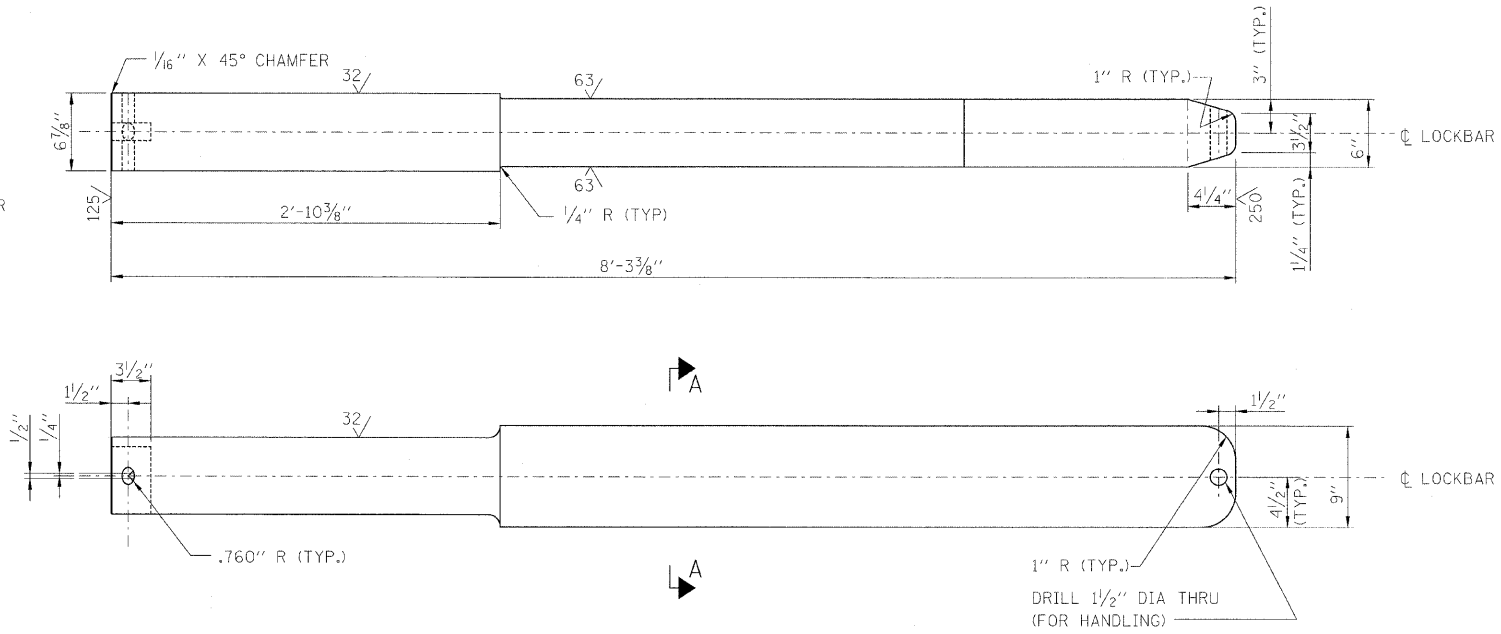
THIS END IS FOR THE LOCKBAR SIDE OF THE LOCKBAR OPERATOR

NEW LOCKBAR OPERATOR MACHINERY SUPPORTS

MATERIAL: ASTM A709, GRADE 50
SCALE: 1/2\"/>



SECTION A-A



NEW LOCKBAR

MATERIAL: ASTM A668, CLASS L FORGING
QUENCHED AND TEMPERED TO 260-290 BHN.
SCALE: 1/2\"/>

NOTES:

1. FOR GENERAL NOTES, SEE SHEET M-01.
2. WORK THIS DRAWING WITH SHEETS M-11 THRU M-17.
3. CONTRACTOR SHALL VERIFY ALL DIMENSIONS.
4. WELDING SHALL CONFORM TO THE AMERICAN WELDING SOCIETY CODE AWS-D1.5M/D1.5: 2008. PERMISSIBLE ELECTRODES ARE: AWS ER705-6 WITH CO₂ OR 75% ARGON - 25% CO₂ COVER GAS; OR AWS E7018; OR AWS E71T-1 WITH 75% ARGON - 25% CO₂ COVER GAS.

PB Americas, Inc.
230 WEST MONROE STREET,
SUITE 900
CHICAGO, IL. 60606

USER NAME = sharma
FILE NAME = 0160361-shr-mec-14.dgn
PLOT SCALE = NONE
PLOT DATE = 5/7/2009

DESIGNED - V. LEVIT
DRAWN - V. LEVIT
CHECKED - D. NYARKO
DATE - MAY 8, 2009

REVISED -
REVISED -
REVISED -
REVISED -

**STATE OF ILLINOIS
DEPARTMENT OF TRANSPORTATION**

CENTER LOCK MACHINERY SUPPORTS AND LOCKBAR DETAILS

SCALE: AS SHOWN SHEET NO. M-14 OF M-27 SHEETS STA. 379+06.09 TO STA. 382+45.28

F.A.P. RTE.	SECTION	COUNTY	TOTAL SHEETS	SHEET NO.
389	2424-2B-R	COOK	398	258
CONTRACT NO. 60D61				
FED. ROAD DIST. NO. 1 ILLINOIS FED. AID PROJECT				