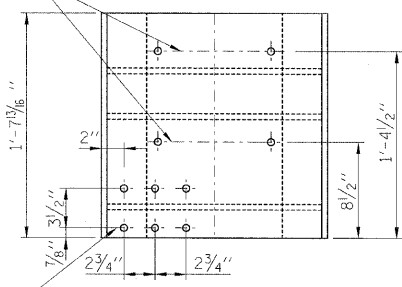


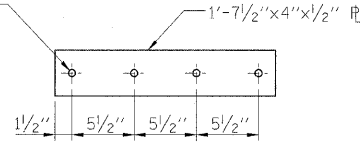
DRILL 5/8" DIA. THRU AT ASSEMBLY 2 HOLES AS SHOWN



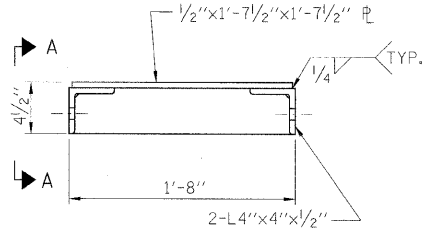
PLAN

DRILL 5/8" DIA. THRU AT ASSEMBLY 6 HOLES AS SHOWN

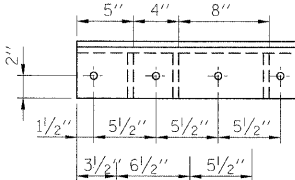
DRILL 15/16" DIA. THRU AT ASSEMBLY 4 HOLES AS SHOWN



SHIM PLATE



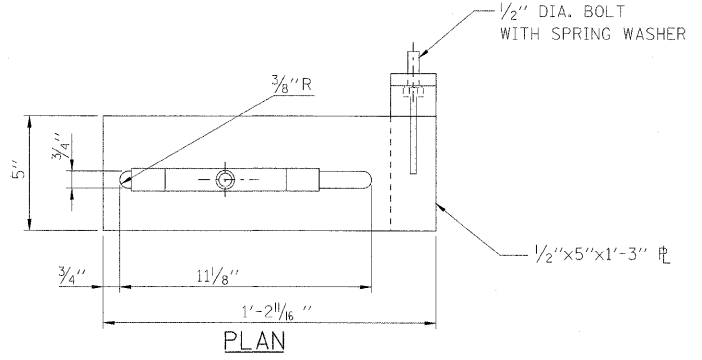
ELEVATION



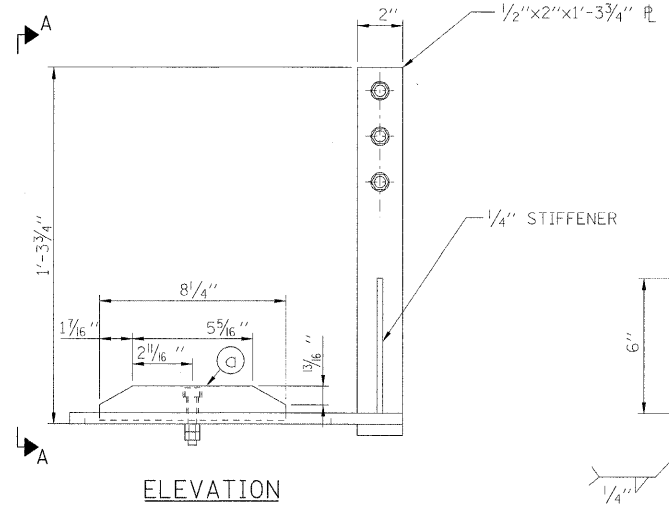
SECTION A-A

MANUAL OPERATION MACHINERY SUPPORT

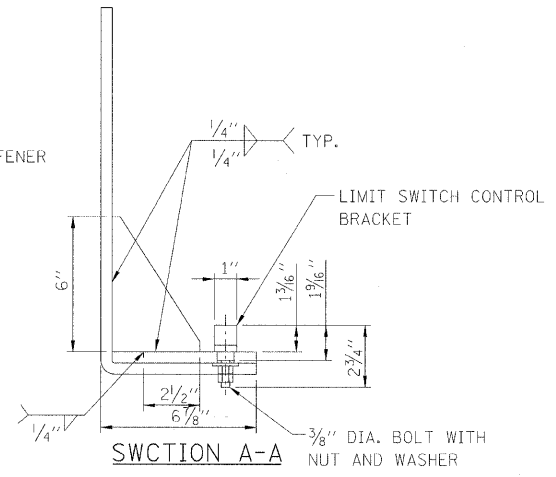
SCALE: 3"=1'-0"
MATERIAL: ASTM A709, GRADE 50



PLAN



ELEVATION



SECTION A-A

LIMIT SWITCH SUPPORT BRACKET ASSEMBLY

MATERIAL: ASTM A709, GRADE 50
SCALE: 3"=1'-0"

NOTES:

- FOR GENERAL NOTES, SEE SHEET M-01.
- WORK THIS DRAWING WITH SHEETS M-11 THRU M-17.
- CONTRACTOR SHALL VERIFY ALL DIMENSIONS.
- WELDING SHALL CONFORM TO THE AMERICAN WELDING SOCIETY CODE AWS-D1.5M/D1.5; 2008. PERMISSIBLE ELECTRODES ARE: AWS ER705-6 WITH CO₂ OR 75% ARGON - 25% CO₂ COVER GAS; OR AWS E7018; OR AWS E71T-1 WITH 75% ARGON - 25% CO₂ COVER GAS.

PB Americas, Inc.
230 WEST MONROE STREET,
SUITE 900
CHICAGO, IL. 60606

USER NAME = sharma	DESIGNED - V. LEVIT	REVISED -
FILE NAME = D160d61-shr-mec-17.dgn	DRAWN - V. LEVIT	REVISED -
PLOT SCALE = NONE	CHECKED - D. NYARKO	REVISED -
PLOT DATE = 5/7/2009	DATE - MAY 8, 2009	REVISED -

STATE OF ILLINOIS
DEPARTMENT OF TRANSPORTATION

CENTER LOCK MANUAL OPERATION MACHINERY SUPPORTS

SCALE: AS SHOWN SHEET NO. M-17 OF M-27 SHEETS STA. 379+06.09 TO STA. 382+45.28

F.A.P. RITE.	SECTION	COUNTY	TOTAL SHEETS	SHEET NO.
389	2424-2B-R	COOK	398	261
CONTRACT NO. 60D61				
FED. ROAD DIST. NO. 1 ILLINOIS FED. AID PROJECT				