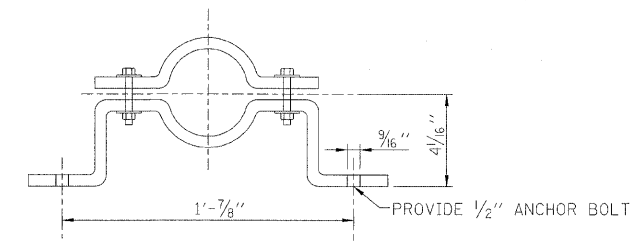
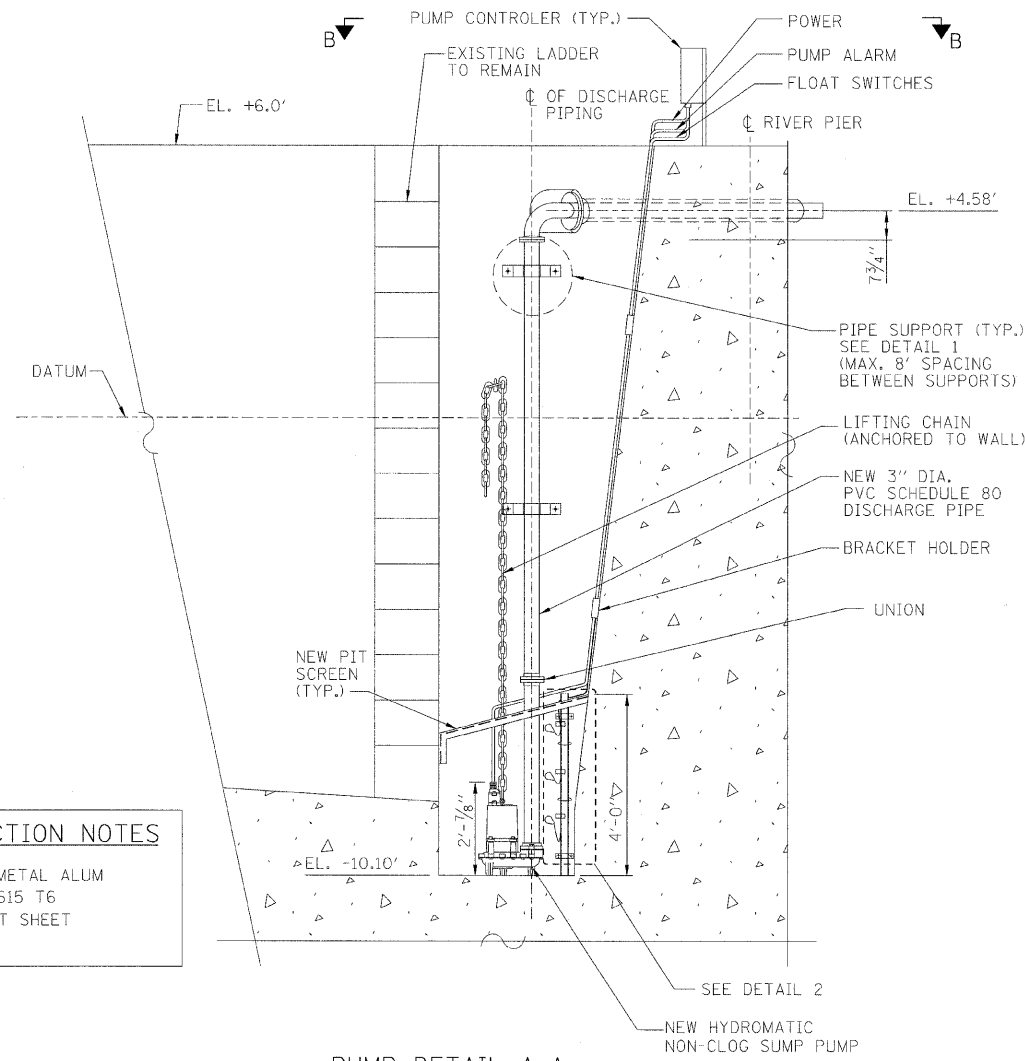


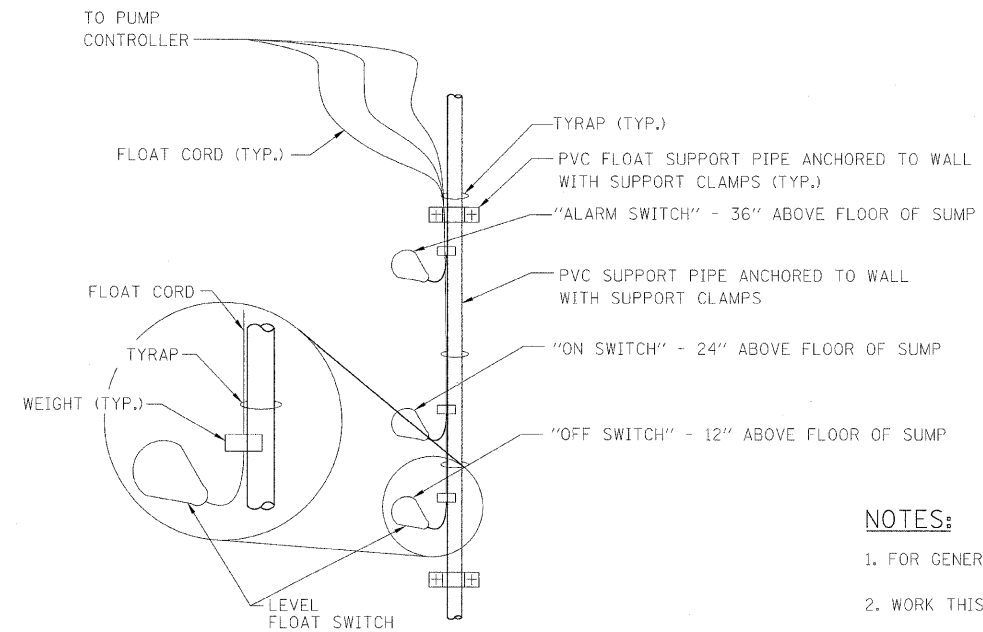
**SECTION B-B**  
SCALE: 1/2"=1'-0"



**PIPE SUPPORT-DETAIL 1**  
N.T.S.



**PUMP DETAIL A-A** (SEE DWG. M-18)  
TYPICAL OF FOUR  
SCALE: 1/2"=1'-0"



**FLOAT MOUNTING SYSTEM-DETAIL 2**  
NOT TO SCALE

**PIT SCREEN CONSTRUCTION NOTES**

GRILLE - 3/4"x0.125 FLATTENED METAL ALUM  
 ANGLES - 1 1/2"x1/2"x1/4" ALUM 615 T6  
 PLATES - .125" ALUM 3SH14 FLAT SHEET  
 WELDING - HELIARC PROCESS

**NOTES:**

- FOR GENERAL NOTES, SEE SHEET M-01.
- WORK THIS DWG WITH SHEET M-18.
- CONTRACTOR SHALL VERIFY ALL DIMENSIONS.
- THE MATERIALS FOR ALL ANCHOR BOLTS, NUTS, WASHERS AND LIFTING CHAIN SHALL BE 316 STAINLESS STEEL.
- ALL FLOAT SWITCHES SHALL BE TIED SEPARATELY TO SUPPORT PIPE.
- ALL SUPPORT CLAMPS FOR ALL DISCHARGE AND FLOAT MOUNTING PIPES CLAMPS, BRACKET HOLDERS SHALL BE 316 STAINLESS STEEL.
- PROVIDE ALL SUPPORT CLAMPS, BRACKET HOLDERS AS NECESSARY.
- PROVIDE OPENINGS IN PIT SCREEN FOR ALL FLOAT POWER AND FLOAT CORDS, DISCHARGE PIPES, FLOAT SUPPORT PIPES AND LIFTING CHAIN.

**PB Americas, Inc.**  
 230 WEST MONROE STREET,  
 SUITE 900  
 CHICAGO, IL. 60606

USER NAME = aharma	DESIGNED - J. BONSU	REVISED -
FILE NAME = D160d61-shs-mec-19.dgn	DRAWN - V. LEVIT	REVISED -
PLOT SCALE = NONE	CHECKED - J. GUINAN	REVISED -
PLOT DATE = 5/7/2009	DATE - MAY 8, 2009	REVISED -

**STATE OF ILLINOIS**  
**DEPARTMENT OF TRANSPORTATION**

**SUMP PUMP DETAILS**

SCALE: AS SHOWN SHEET NO. M-19 OF M-27 SHEETS STA. 379+06.09 TO STA. 382+45.28

F.A.P. RTE.	SECTION	COUNTY	TOTAL SHEETS	SHEET NO.
389	2424-2B-R	COOK	398	263
CONTRACT NO. 60D61				
FED. ROAD DIST. NO. 1 ILLINOIS FED. AID PROJECT				