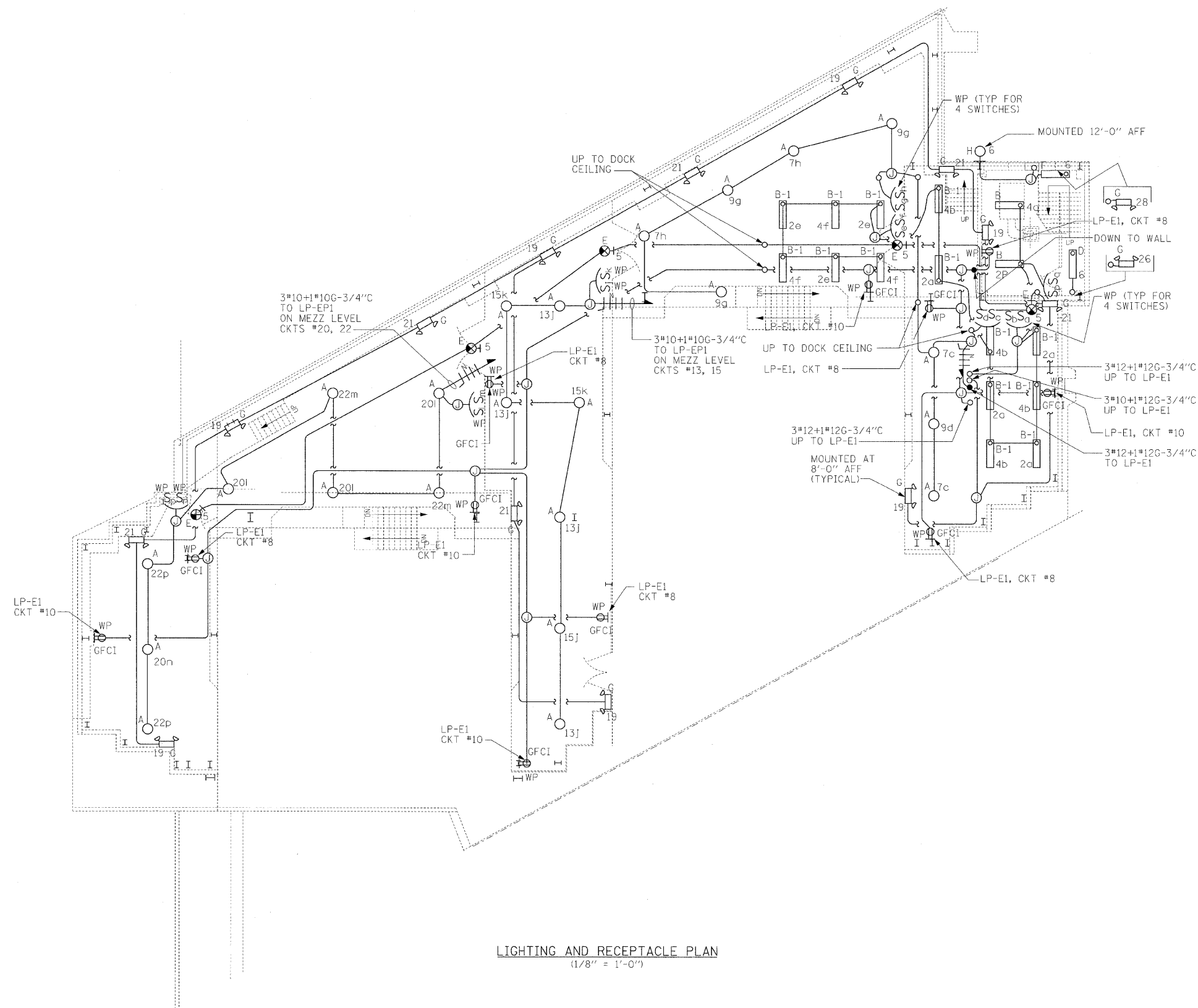




NOTES:

1. FOR ELECTRICAL SYMBOLS AND ABBREVIATIONS SEE DWGS E-04, E-05 AND E-06.
2. FOR GENERAL NOTES SEE DWG E-02 AND E-04.
3. FOR PANEL SCHEDULES SEE DWG E-64.
4. FOR LIGHT FIXTURES DESCRIPTIONS SEE ELECTRICAL SPECIFICATIONS.



LIGHTING AND RECEPTACLE PLAN
(1/8" = 1'-0")

PB Americas, Inc.
230 WEST MONROE STREET,
SUITE 900
CHICAGO, IL. 60606

USER NAME = sharma
FILE NAME = D:\60-661-xht-a1c-31.dgn
PLOT SCALE = NONE
PLOT DATE = 5/7/2009

DESIGNED - R. GODULIAS
DRAWN - S. SHARMA
CHECKED - M. INTATANO
DATE - MAY 8, 2009

REVISED -
REVISED -
REVISED -
REVISED -

STATE OF ILLINOIS
DEPARTMENT OF TRANSPORTATION

LIGHTING AND RECEPTACLE PLAN
EAST SIDE DOCK LEVEL

SCALE: AS SHOWN SHEET NO. E-31 OF E-125 SHEETS STA. 379+06.09 TO STA. 382+45.28

F.A.P. RTE.	SECTION	COUNTY	TOTAL SHEETS	SHEET NO.
389	2424-2B-R	COOK	398	302
FED. ROAD DIST. NO. 1 ILLINOIS FED. AID PROJECT				CONTRACT NO. 60D61