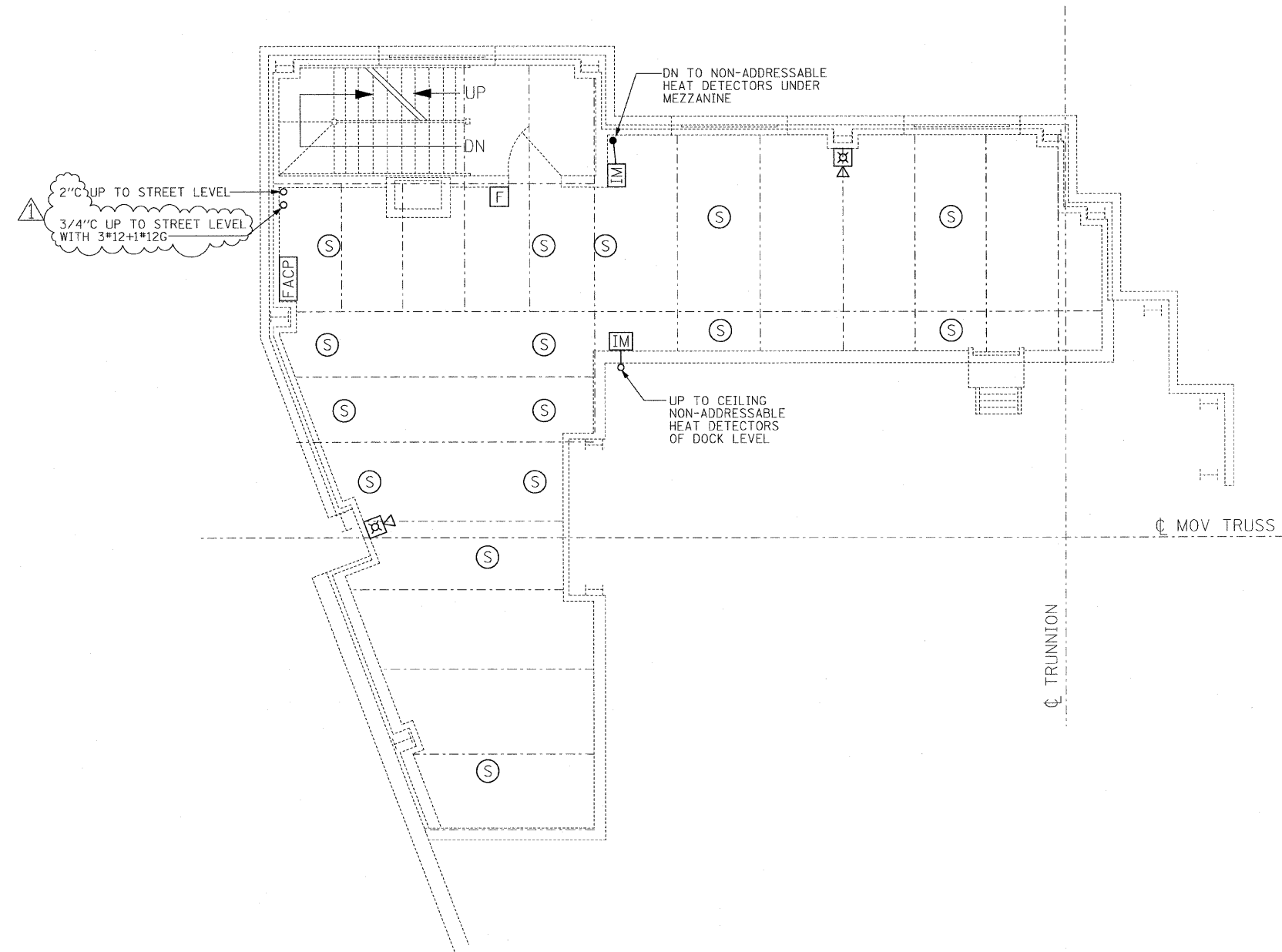


- NOTES:**
1. FOR ELECTRICAL SYMBOLS SEE DWGS. E-04 & E-05.
  2. FOR ABBREVIATIONS SEE DWG. E-06.
  3. FOR GENERAL NOTES SEE DWGS. E-02 & E-03.
  4. FOR FIRE ALARM RISER DIAGRAM, SEE DWG E-16.
  5. FOR CCTV RISER DIAGRAM, SEE DWG E-17.



**AUXILIARY SYSTEMS PLAN - WEST SIDE MEZZANINE LEVEL**  
 1/4" = 1'-0"

**ADDENDUM - JULY 14, 2009**

<b>PB Americas, Inc.</b> 230 WEST MONROE STREET, SUITE 900 CHICAGO, IL. 60606	USER NAME = sharma	DESIGNED - R. GODULIAS	REVISED -	<b>STATE OF ILLINOIS</b> <b>DEPARTMENT OF TRANSPORTATION</b>	<b>AUXILIARY SYSTEMS PLAN</b> <b>WEST SIDE MEZZANINE LEVEL</b>		F.A.P. RTE. 389	SECTION 2424-2B-R	COUNTY COOK	TOTAL SHEETS 398	SHEET NO. 323		
	FILE NAME = D:\60661-ahf-elo-52.dgn	DRAWN - S. SHARMA	REVISED -		SCALE: AS SHOWN	SHEET NO. E-52 OF E-125 SHEETS	STA. 379+06.09 TO STA. 382+45.28	FED. ROAD DIST. NO. 1 [ILLINOIS] FED. AID PROJECT					
	PLOT SCALE = NONE	CHECKED - M. INTATANO	REVISED -										
	PLOT DATE = 5/7/2009	DATE - MAY 8, 2009	REVISED -										