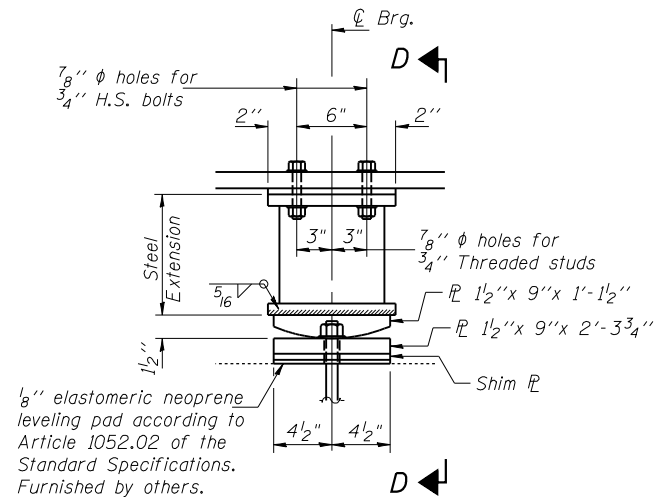


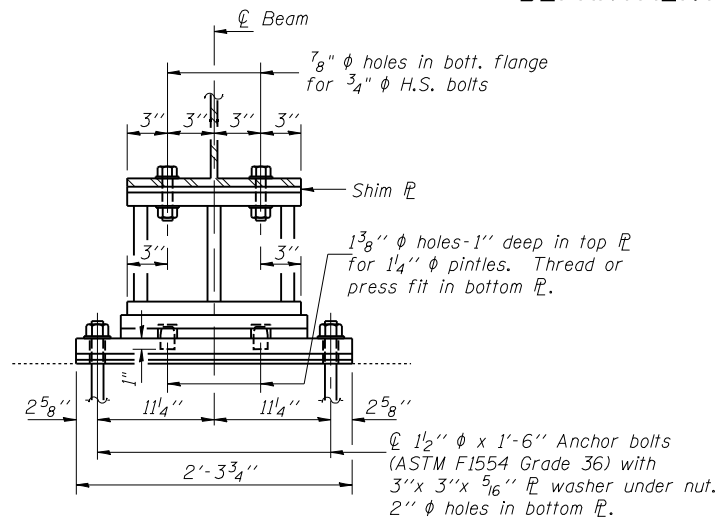
STATE OF ILLINOIS
DEPARTMENT OF TRANSPORTATION

ROUTE NO.	SECTION	COUNTY	TOTAL SHEETS	SHEET NO.	SHEET NO. 16 23 SHEETS
FAI 74	(57-22) BR-2	McLEAN	42	27	
FED. ROAD DIST. NO. 7	ILLINOIS	FED. AID PROJECT			

Contract No. 70671

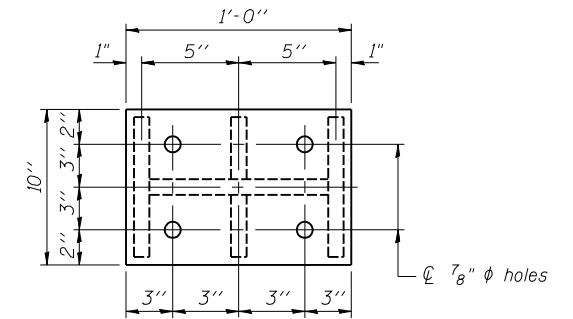
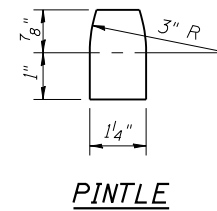


ELEVATION AT PIER 1



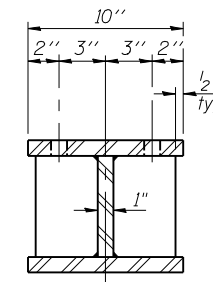
SECTION D-D

FIXED BEARINGS

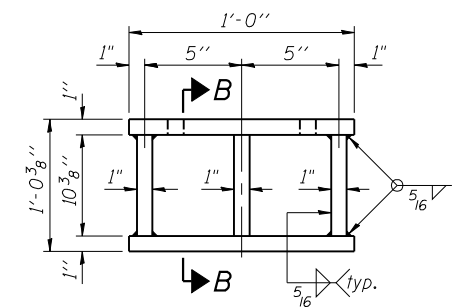


PLAN TOP AND BOTTOM PLATE

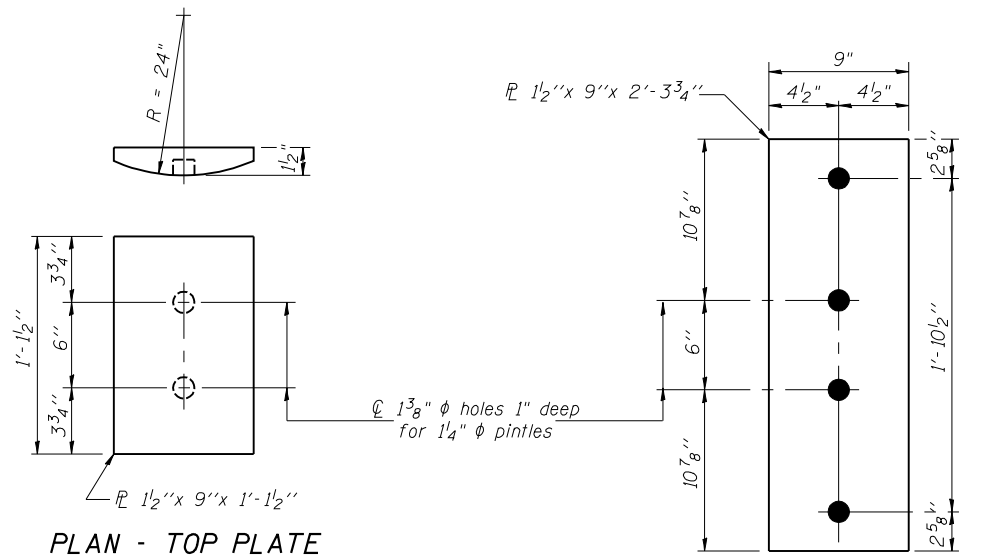
Note: Omit bolt holes in bottom plates.



SECTION B-B



STEEL EXTENSION DETAIL



PLAN - TOP PLATE

PLAN - BOTTOM PLATE

Notes:
Anchor bolts shall be ASTM F1554 all-thread (or an Engineer-approved alternate material) of the grade(s) and diameter(s) specified. ASTM A307 Grade C anchor bolts may be used in lieu of ASTM F1554 Grade 36 (Fy=36ksi). The corresponding specified grade of AASHTO M314 anchor bolts may be used in lieu of ASTM F1554.
Drilled and set anchor bolts shall be installed according to Article 521.06 of the Standard Specifications.
Anchor bolts and plate washers will be furnished and installed under this contract.
The structural steel plates of the Bearing Assembly shall conform to the requirements of AASHTO M 270 Grade 50.
The structural steel plates of the Bearing Assembly shall conform to the requirements of AASHTO M 270 Grade 50.
Two $1/8$ in. adjusting shims shall be provided by others for each bearing in addition to all other plates or shims and placed as shown on bearing details.

BILL OF MATERIAL

Item	Unit	Total
Anchor Bolt $1 1/2'' \phi$	Each	12

DESIGNED	DHC
CHECKED	CCC
DRAWN	h.t. duong
CHECKED	DHC/CCC

Aug. 2, 2007
EXAMINED *Thomas J. Demagala*
ENGINEER OF BRIDGE DESIGN
PASSED *Ralph E. Anderson*
ENGINEER OF BRIDGES AND STRUCTURES

BEARING DETAILS
F.A.I. RT. 74 - SEC. (57-22)BR-2
McLEAN COUNTY
STATION 1039+00
STRUCTURE NO. 057-0126 (W.B.)