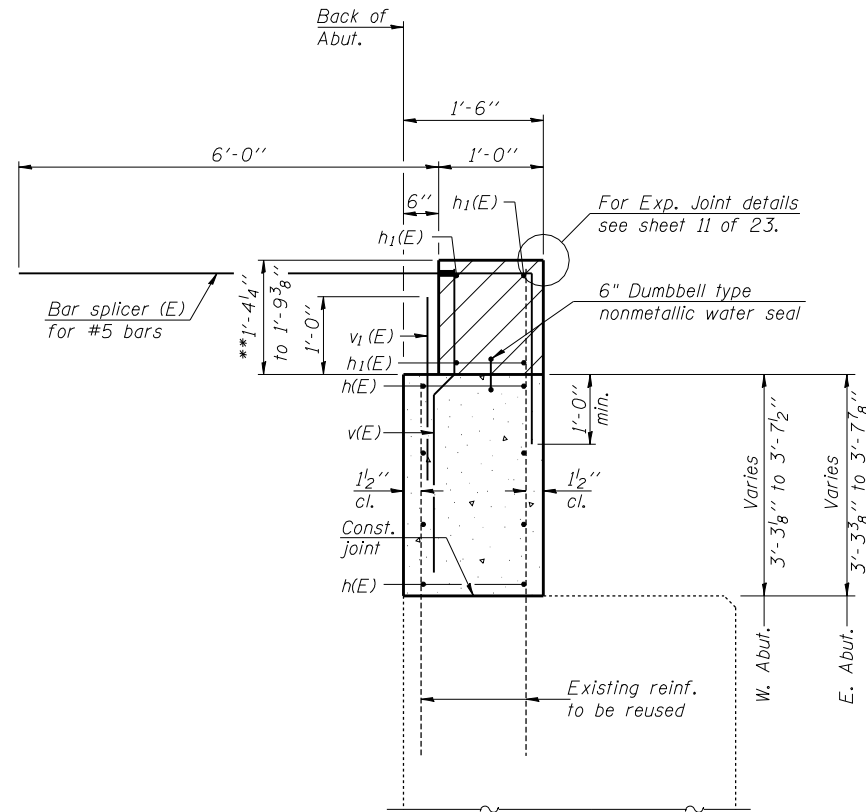


STATE OF ILLINOIS
DEPARTMENT OF TRANSPORTATION

ROUTE NO.	SECTION	COUNTY	TOTAL SHEETS	SHEET NO.
FAI 74	(57-22) BR-2	McLEAN	42	32
FED. ROAD DIST. NO. 7	ILLINOIS	FED. AID PROJECT		

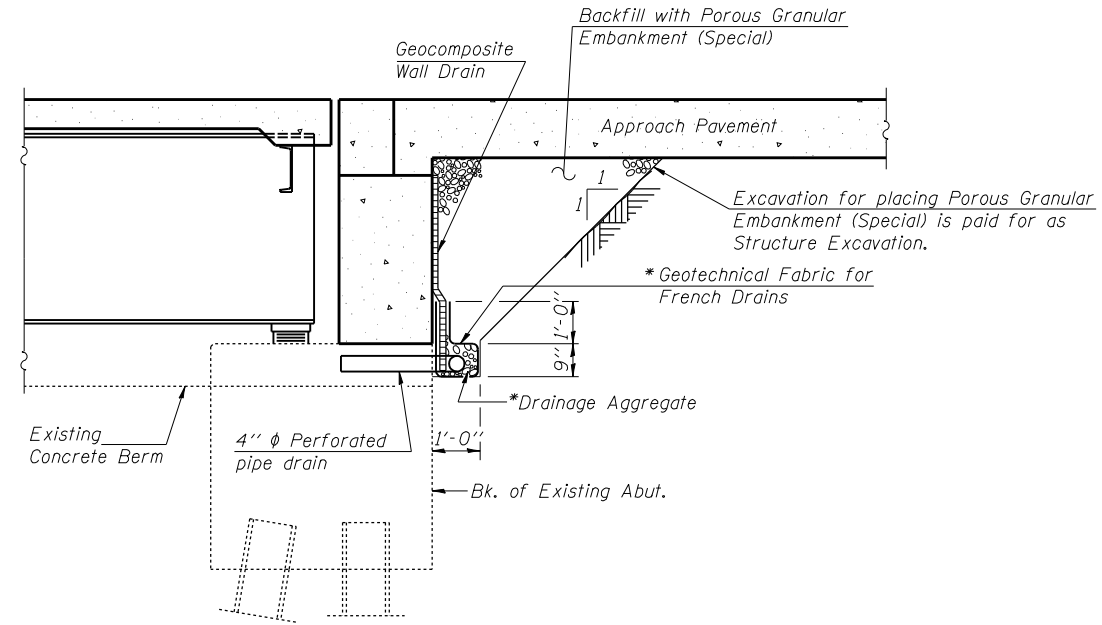
SHEET NO. 21
23 SHEETS

Contract No. 70671



SEC. THRU ABUT.

**Prior to Grinding

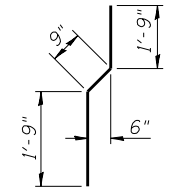


TYPICAL DRAIN DETAIL AT ABUTMENTS

(Horiz. dim. @ Rt. L's)

*Included in the cost of Pipe Underdrains for Structures.

Note:
Drainage system components shall extend as shown to discharge onto
sloped wall. Provide rodent shield in the outlet pipe as shown on Highway Standard 601101.
Core hole through Existing Wingwall for 4" φ Underdrain Outlet Pipe, 4 locations.
Cost included with Pipe Underdrains for Structures.



BAR v(E)

TWO ABUTMENTS
BILL OF MATERIAL

Bar	No.	Size	Length	Shape
h(E)	32	#5	22'-6"	—
h1(E)	16	#6	22'-9"	—
v(E)	88	#4	4'-3"	—
v1(E)	88	#5	3'-6"	—
Structure Excavation		Cu. Yd.		39
Concrete Structures		Cu. Yd.		16.6
Reinforcement Bars, Epoxy Coated		Pound		1870
Concrete Sealer		Sq. Ft.		731
Bar Splicers		Each		88

For details of Bar Splicers, see sheet
23 of 23.

DESIGNED	Dewey H. Coultas
CHECKED	Chi-Cheung Chau
DRAWN	h.t. duong
CHECKED	DHC/CCC

	JULY 31, 2007
EXAMINED	Thomas J. Damagala
PASSED	Ralph E. Anderson

ABUTMENT DETAILS
F.A.I. RT. 74 - SEC. (57-22)BR-2
McLEAN COUNTY
STATION 1039+00
STRUCTURE NO. 057-0126 (W.B.)