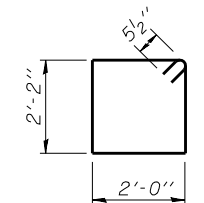
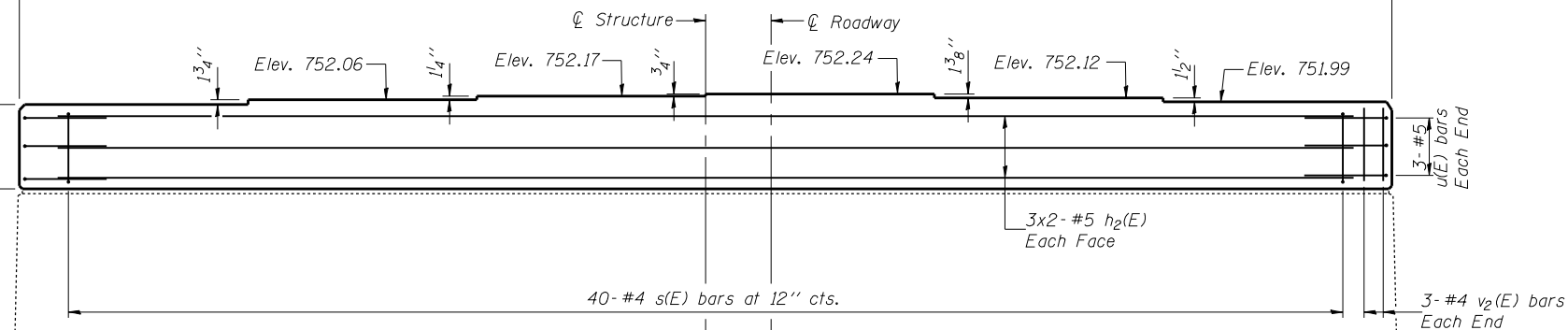
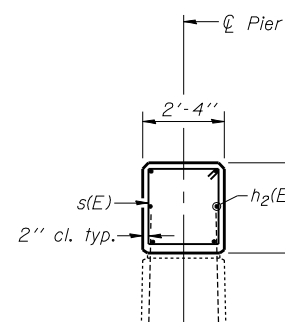
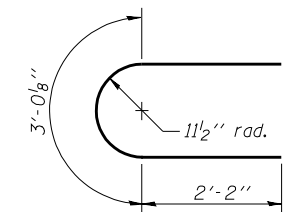
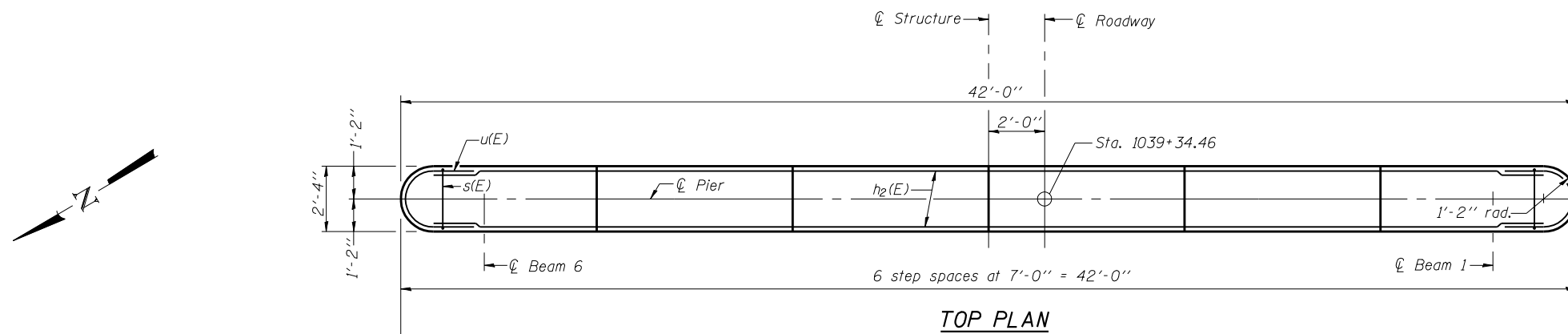


STATE OF ILLINOIS
DEPARTMENT OF TRANSPORTATION

ROUTE NO.	SECTION	COUNTY	TOTAL SHEETS	SHEET NO.
FAI 74	(57-22) BR-2	McLEAN	42	33
FED. ROAD DIST. NO. 7		ILLINOIS	FED. AID PROJECT-	

SHEET NO. 22
23 SHEETS

Contract No. 70671



BILL OF MATERIAL

Bar	No.	Size	Length	Shape
h ₂ (E)	12	#5	20'-11"	—
u(E)	6	#5	7'-4"	⊂
v ₂ (E)	6	#4	2'-2"	—
s(E)	40	#4	9'-3"	□
Concrete Structures			Cu. Yd.	9.5
Reinforcement Bars, Epoxy Coated			Pound	560

MIN. BAR LAP
#5 bars = 2'-2"

DESIGNED	Dewey H. Coultas
CHECKED	Chi-Cheung Chau
DRAWN	h.t. duong
CHECKED	DHC/CCC

EXAMINED	Thomas J. Domagala	JULY 31, 2007
PASSED	Ralph E. Anderson	

Note:
Existing reinforcement bars extending into areas of new construction shall be cleaned, straightened, and incorporated into the new construction.

PIER 2
F.A.I. RT. 74 - SEC. (57-22)BR-2
McLEAN COUNTY
STATION 1039+00
STRUCTURE NO. 057-0126 (W.B.)