

STATE OF ILLINOIS  
DEPARTMENT OF TRANSPORTATION  
DIVISION OF HIGHWAYS

**PROPOSED  
HIGHWAY PLANS**

FAP RTE. 353: US RTE. 30 (LINCOLN HIGHWAY)  
IL RTE. 50 (CICERO AVE.) TO WESTERN AVE.  
SECTION 23R-RS

PAVEMENT PATCHING, DIAMOND GRINDING, AND RESURFACING (3P)  
COOK COUNTY

C-91-061-11

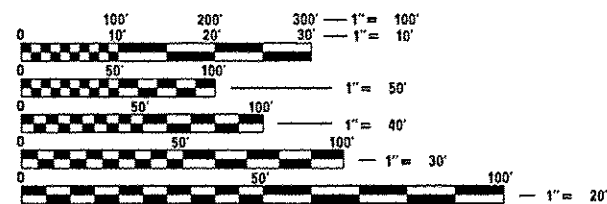
F.A.P. RTE.	SECTION	COUNTY	TOTAL SHEETS	SHEET NO.
353	23R-RS	COOK	66	1
		ILLINOIS	CONTRACT NO. 60L94	

D-91-061-11



FOR INDEX OF SHEETS, SEE SHEET NO. 2

THE PROJECT IS LOCATED IN THE VILLAGE OF MATTESSON, VILLAGE OF OLYMPIA FIELDS, VILLAGE OF PARK FOREST AND THE CITY OF CHICAGO HEIGHTS IN COOK COUNTY.

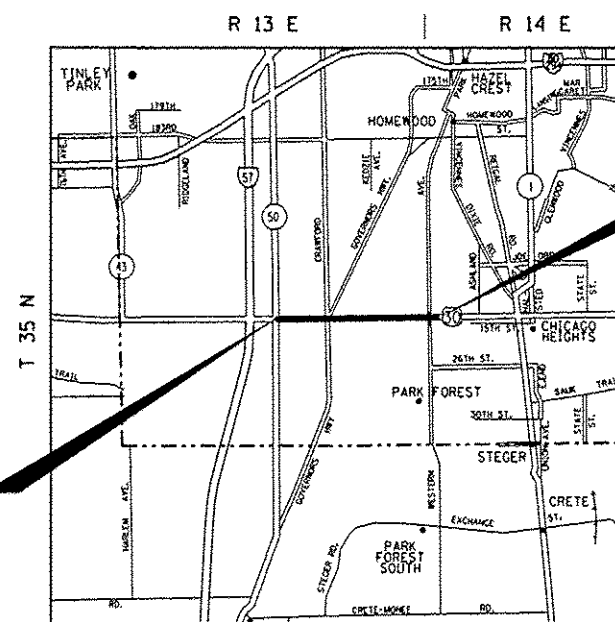


FULL SIZE PLANS HAVE BEEN PREPARED USING STANDARD ENGINEERING SCALES. REDUCED SIZED PLANS WILL NOT CONFORM TO STANDARD SCALES. IN MAKING MEASUREMENTS ON REDUCED PLANS, THE ABOVE SCALES MAY BE USED.

J.U.L.I.E.  
JOINT UTILITY LOCATION INFORMATION FOR EXCAVATION  
1-800-892-0123  
OR 811

PROJECT ENGINEER: KARI SMITH (847) 705-4437  
PROJECT MANAGER: KEN ENG (847) 705-4247

CONTRACT NO. 60L94



RICH & BLOOM TOWNSHIP

PROJECT BEGINS  
STA. 11 + 97

PROJECT ENDS  
STA. 181 + 86

GROSS LENGTH OF PROJECT = 16,989 FT. = 3.218 MILE  
NET LENGTH OF PROJECT = 16,989 FT. = 3.218 MILE

**TRAFFIC DATA**

2013 ADT = 35,400  
POSTED SPEED LIMIT = 35 - 40 MPH

STATE OF ILLINOIS  
DEPARTMENT OF TRANSPORTATION  
DIVISION OF HIGHWAYS

SUBMITTED June 12 20 14

John F. Eastman, Jr.  
DEPUTY DIRECTOR OF HIGHWAYS, REGION 1 ENGINEER

July 18 20 14  
John D. Baranzolo, P.E.  
ENGINEER OF DESIGN AND ENVIRONMENT

July 18 20 14  
Omer Osman, P.E.  
DIRECTOR OF HIGHWAYS, CHIEF ENGINEER

PRINTED BY THE AUTHORITY  
OF THE STATE OF ILLINOIS