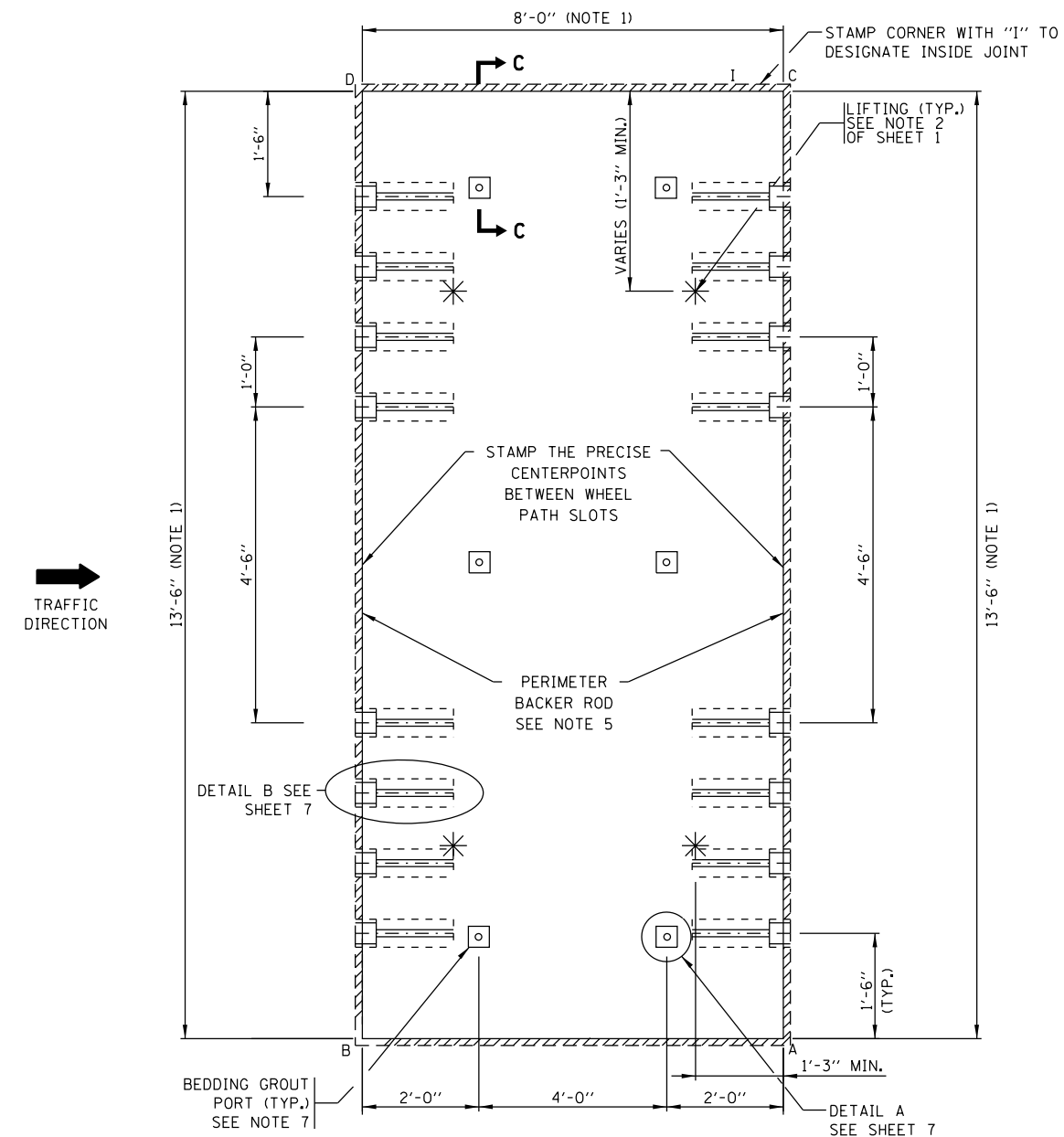


**STANDARD 12'-6" WIDE PANEL LAYOUT FOR ISOLATED PLACEMENT WITH NARROW MOUTH PREFORMED DOWEL SLOTS TO ALIGN WITH PREDRILLED HOLES IN ADJACENT PAVEMENT.**



**STANDARD 13'-6" WIDE PANEL LAYOUT FOR ISOLATED PLACEMENT WITH NARROW MOUTH PREFORMED DOWEL SLOTS TO ALIGN WITH PREDRILLED HOLES IN ADJACENT PAVEMENT.**

**NOTES:**

1. THE WIDTH AND LENGTH OF PRODUCED SLABS SHALL BE THE INDICATED DIMENSIONS  $\pm 1/8"$ .
2. FOR MIDDLE LANE SLAB OPENINGS/PATCHES LESS THAN 12'-6" IN WIDTH AND GREATER THAN 11'-6" IN WIDTH, THE 12'-6" WIDE STANDARD PERCAST SLAB CAN BE SAW CUT ON-SITE TO FIT THE OPENING AND TO MAINTAIN ALIGNMENT WITH EXISTING LONGITUDINAL JOINTS. OTHERWISE, THE SLAB PATCH LOCATION MUST BE PRESURVEYED BY THE CONTRACTOR AND THE SLAB FABRICATED AS A CUSTOM SLAB.
3. FOR MIDDLE LANE SLAB OPENINGS/PATCHES LESS THAN 13'-6" IN WIDTH AND GREATER THAN 12'-6" IN WIDTH, THE 13'-6" WIDE STANDARD PERCAST SLAB CAN BE SAW CUT ON-SITE TO FIT THE OPENING AND TO MAINTAIN ALIGNMENT WITH EXISTING LONGITUDINAL JOINTS. OTHERWISE, THE SLAB PATCH LOCATION MUST BE PRESURVEYED BY THE CONTRACTOR AND THE SLAB FABRICATED AS A CUSTOM SLAB.
4. SLAB THICKNESS SHALL BE AS INDICATED IN THE PLANS.
5. A FOAM BACKER ROD SHALL BE PLACED AROUND THE OUTSIDE PERIMETER OF THE SLAB AT THE BOTTOM OF THE JOINTS BEFORE THE SLAB HAS BEEN SET AND BEFORE BEDDING GROUT OR POLYURETHANE LEVELING FILL IS APPLIED. THE BACKER ROD SHALL NOT BE REQUIRED WHEN ANY SLAB IS LEVELLED WITH FLOWABLE FILL.
6. SEE SHEET 7 FOR SECTION DETAILS.
7. SEE NOTE 8 ON SHEET 1 FOR LOCATING UNDERSEALING GROUT PORTS.

FILE NAME =	USER NAME = dettmanna	DESIGNED - 0. PATEL	REVISED - D.G. 6-14	<b>STATE OF ILLINOIS DEPARTMENT OF TRANSPORTATION</b>	<b>PRECAST CONCRETE PAVEMENT SLABS</b>			F.A. RTE.	SECTION	COUNTY	TOTAL SHEETS	SHEET NO.
Default	Plot Scale = 100.0000' / in.	CHECKED -	REVISED -					353	23R-R5	COOK	66	45
	PLOT DATE = 6/19/2014	DATE - 10-25-2013	REVISED -		SCALE: NONE    SHEET 6 OF 19 SHEETS    STA.    TO STA.			<b>BD 57</b>		<b>CONTRACT NO. 60L94</b>		
					ILLINOIS FED. AID PROJECT							