

STATE OF ILLINOIS
DEPARTMENT OF TRANSPORTATION
DIVISION OF HIGHWAYS

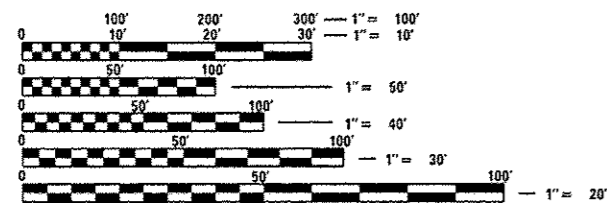
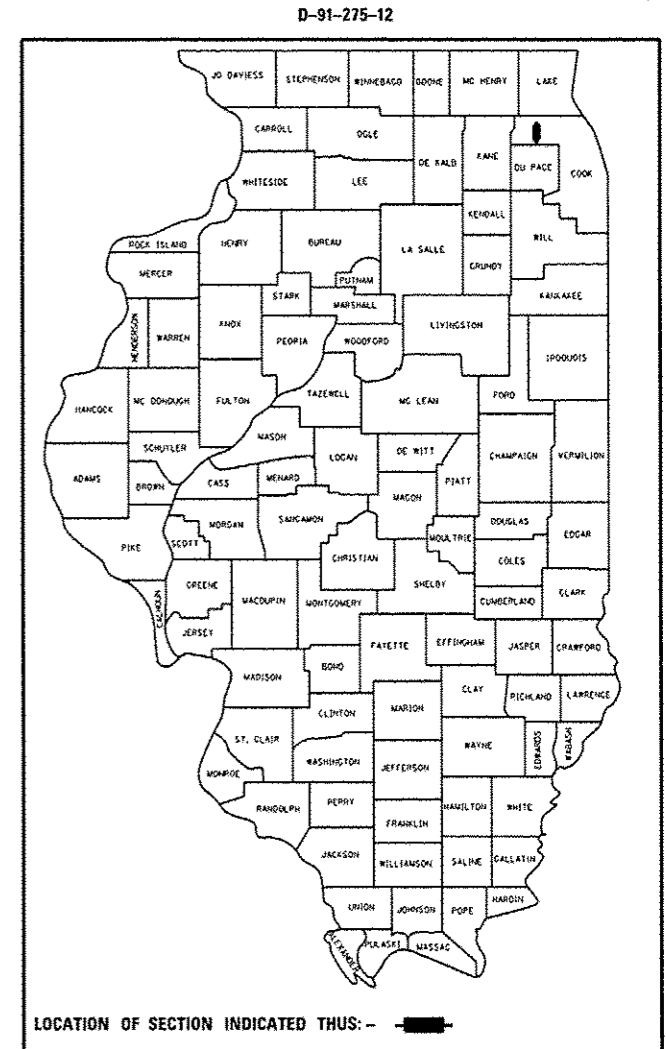
F.A.P. RTE.	SECTION	COUNTY	TOTAL SHEETS	SHEET NO.
343	70 & 3045 RS-2	COOK	57	1
		ILLINOIS	CONTRACT NO. 60T02	

FOR INDEX OF SHEETS, SEE SHEET NO. 2

PROPOSED HIGHWAY PLANS

F.A.P. 343 /IL 68 (DUNDEE RD.)
IL 59 (HAWTHORNE RD.) TO US 12 (RAND RD.)
RESURFACING (3P)
SECTION NO.: (70 & 3045) RS-2
COOK COUNTY
C-91-275-12

IMPROVEMENT LOCATED IN THE VILLAGES OF PALATINE, INVERNESS, AND BARRINGTON HILLS



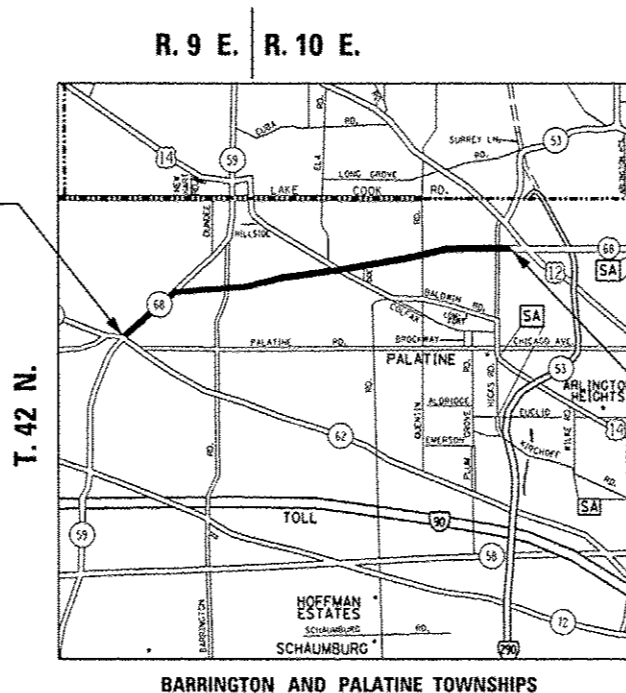
FULL SIZE PLANS HAVE BEEN PREPARED USING STANDARD ENGINEERING SCALES. REDUCED SIZED PLANS WILL NOT CONFORM TO STANDARD SCALES. IN MAKING MEASUREMENTS ON REDUCED PLANS, THE ABOVE SCALES MAY BE USED.

J.U.L.I.E.
JOINT UTILITY LOCATION INFORMATION FOR EXCAVATION
1-800-892-0123
OR 811

PROJECT ENGINEER: JENPAI CHANG (847) 705-4432
PROJECT MANAGER: KEN ENG

CONTRACT NO. 60T02

IMPROVEMENT BEGINS
STA 374 + 62.7



TRAFFIC DATA:

2010 ADT - 28800
SPEED LIMIT - 35 TO 55 MPH

OMISSIONS:

- BARRINGTON RD. TO S. GROVE AVE.
STA. 498 + 00 TO 528 + 03
- ELA RD./MARIE DR. TO US 14 (NORTHWEST HWY.)
STA. 611 + 32 TO 625 + 70
- N. KNOLLWOOD DR. TO N. TRAILSIDE CT.
STA. 693 + 07 TO 715 + 84
- HICKS RD.
STA. 783 + 70 TO 785 + 37

IMPROVEMENT ENDS
STA 810 + 65.4

GROSS LENGTH OF IMPROVEMENT = 43602.7 FT. = 8.25 MILES

NET LENGTH OF IMPROVEMENT = 36689.7 FT. = 6.95 MILES

STATE OF ILLINOIS
DEPARTMENT OF TRANSPORTATION
DIVISION OF HIGHWAYS

SUBMITTED May 28 2014
John F. Patrone
DEPUTY DIRECTOR OF HIGHWAYS, REGION ENGINEER

John D. Baranzelli P.E.
ENGINEER OF DESIGN AND ENVIRONMENT

July 19 2014
Omer Osman P.E.
DIRECTOR OF HIGHWAYS, CHIEF ENGINEER

PRINTED BY THE AUTHORITY
OF THE STATE OF ILLINOIS