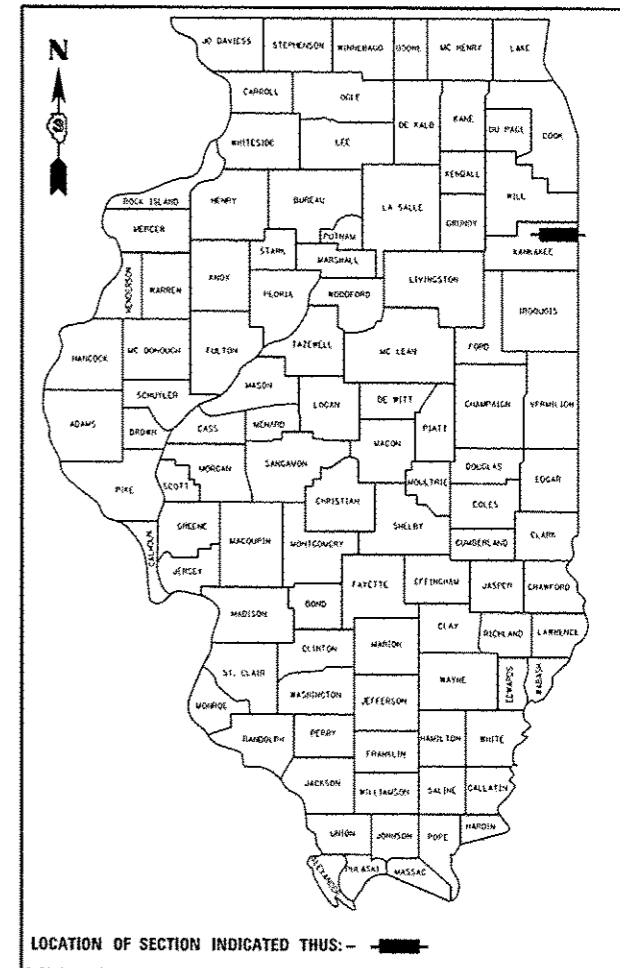


F.A.P. RTE.	SECTION	COUNTY	TOTAL SHEETS	SHEET NO.
332	(6,K-15d)RS-3	KANKAKEE	16	1
		ILLINOIS	CONTRACT NO. 66A95	

D-93-045-11



LOCATION OF SECTION INDICATED THUS: —

OTHER PRINCIPAL ARTERIAL
 2013 ADT = 6950
 P.V. = 67.6%
 S.U. = 14.4%
 M.U. = 18.0%

STATE OF ILLINOIS
 DEPARTMENT OF TRANSPORTATION
 DIVISION OF HIGHWAYS

SUBMITTED 6/11/14 20 14
John D. Baranzelli, P.E.
 DEPUTY DIRECTOR OF HIGHWAYS, REGIONAL ENGINEER
 ENGINEER OF DESIGN AND ENVIRONMENT

Amr Osman, P.E.
 July 18 20 14
 DIRECTOR OF HIGHWAYS, CHIEF ENGINEER

**PRINTED BY THE AUTHORITY
 OF THE STATE OF ILLINOIS**

INDEX OF SHEETS

- 1 COVER SHEET
- 2 GENERAL NOTES
- 3-5 SUMMARY OF QUANTITIES
- 6 TYPICAL SECTIONS
- 7-9 SCHEDULES
- 10 LAYOUT MAP
- 11-12 PAVEMENT MARKING DETAILS
- 13-16 DETAILS

STATE OF ILLINOIS
 DEPARTMENT OF TRANSPORTATION
 DIVISION OF HIGHWAYS
**PROPOSED
 HIGHWAY PLANS**

FAP 332 (IL 1/17)
 SECTION (6,K-15d)RS-3

**3P RESURFACING
 KANKAKEE COUNTY**

C-93-053-11

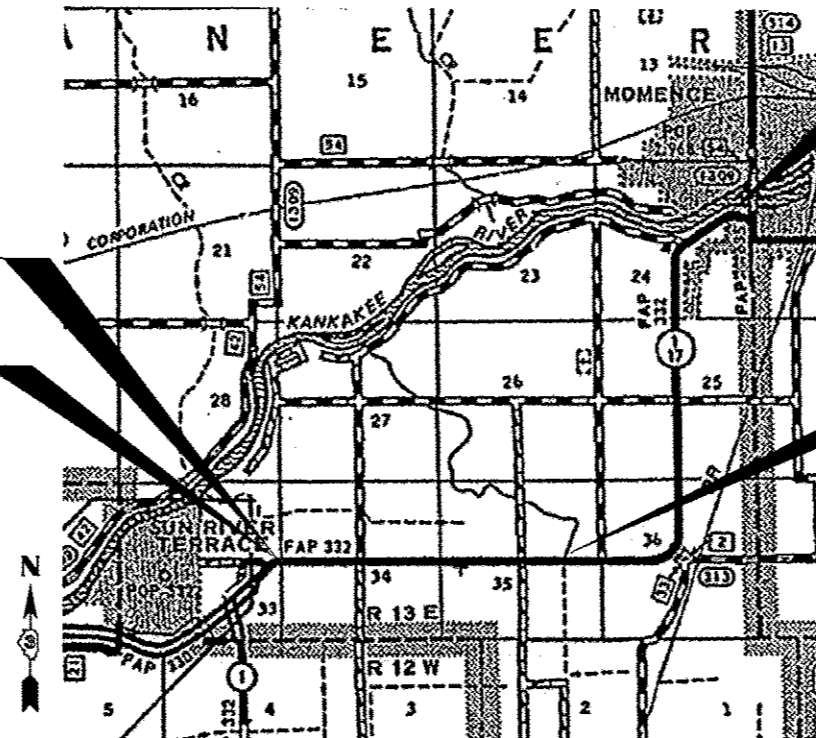
**3P MILLING AND RESURFACING ON IL 1 AND IL 17
 FROM EAST OF IL 1(S) TO WEST OF IL 114 IN MOMENCE**

LIST OF ILLINOIS DOT HIGHWAY STANDARDS

- 000001-06 STANDARD SYMBOLS, ABBREVIATIONS AND PATTERNS
- 001006 DECIMAL OF AN INCH AND OF A FOOT
- 635001-01 DELINEATORS
- 635011-02 REFLECTOR MARKER AND MOUNTING DETAILS
- 642006 SHOULDER RUMBLE STRIPS, 8 INCH
- 667101-02 PERMANENT SURVEY MARKERS
- 701006-05 OFF-ROAD OPERATIONS 2L, 2W, 15' (4.5 m) TO 24" (600 mm) FROM PAVEMENT EDGE
- 701011-04 OFF-ROAD MOVING OPERATIONS 2L, 2W, DAY ONLY
- 701301-04 LANE CLOSURE, 2L, 2W, SHORT TIME OPERATIONS
- 701306-03 LANE CLOSURE, 2L, 2W, SLOW MOVING OPERATIONS DAY ONLY, FOR SPEEDS ≥ 45 MPH
- 701311-03 LANE CLOSURE, 2L, 2W, MOVING OPERATIONS - DAY ONLY
- 701901-03 TRAFFIC CONTROL DEVICES
- 720011-01 METAL POSTS FOR SIGNS, MARKERS AND DELINEATORS
- 780001-04 TYPICAL PAVEMENT MARKINGS
- 781001-03 TYPICAL APPLICATIONS RAISED REFLECTIVE PAVEMENT MARKERS

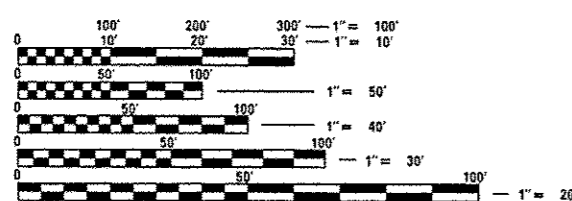
SN 046-2516
 STA 506 + 64

BEGIN PROJECT
 STA 481 + 38.38



END PROJECT
 STA 740 + 37.83

SN 046-2515
 STA 575 + 56



FULL SIZE PLANS HAVE BEEN PREPARED USING STANDARD ENGINEERING SCALES. REDUCED SIZED PLANS WILL NOT CONFORM TO STANDARD SCALES. IN MAKING MEASUREMENTS ON REDUCED PLANS, THE ABOVE SCALES MAY BE USED.

J.U.L.I.E.
 JOINT UTILITY LOCATION INFORMATION FOR EXCAVATION
 1-800-892-0123
 OR 811

PROJECT ENGINEER: JOE KANNEL, P.E.
 UNIT CHIEF: DARCY CARPENTER

CONTRACT NO. 66A95

GROSS LENGTH = 25899.45 FT. = 4.905 MILE
 NET LENGTH = 25899.45 FT. = 4.905 MILE