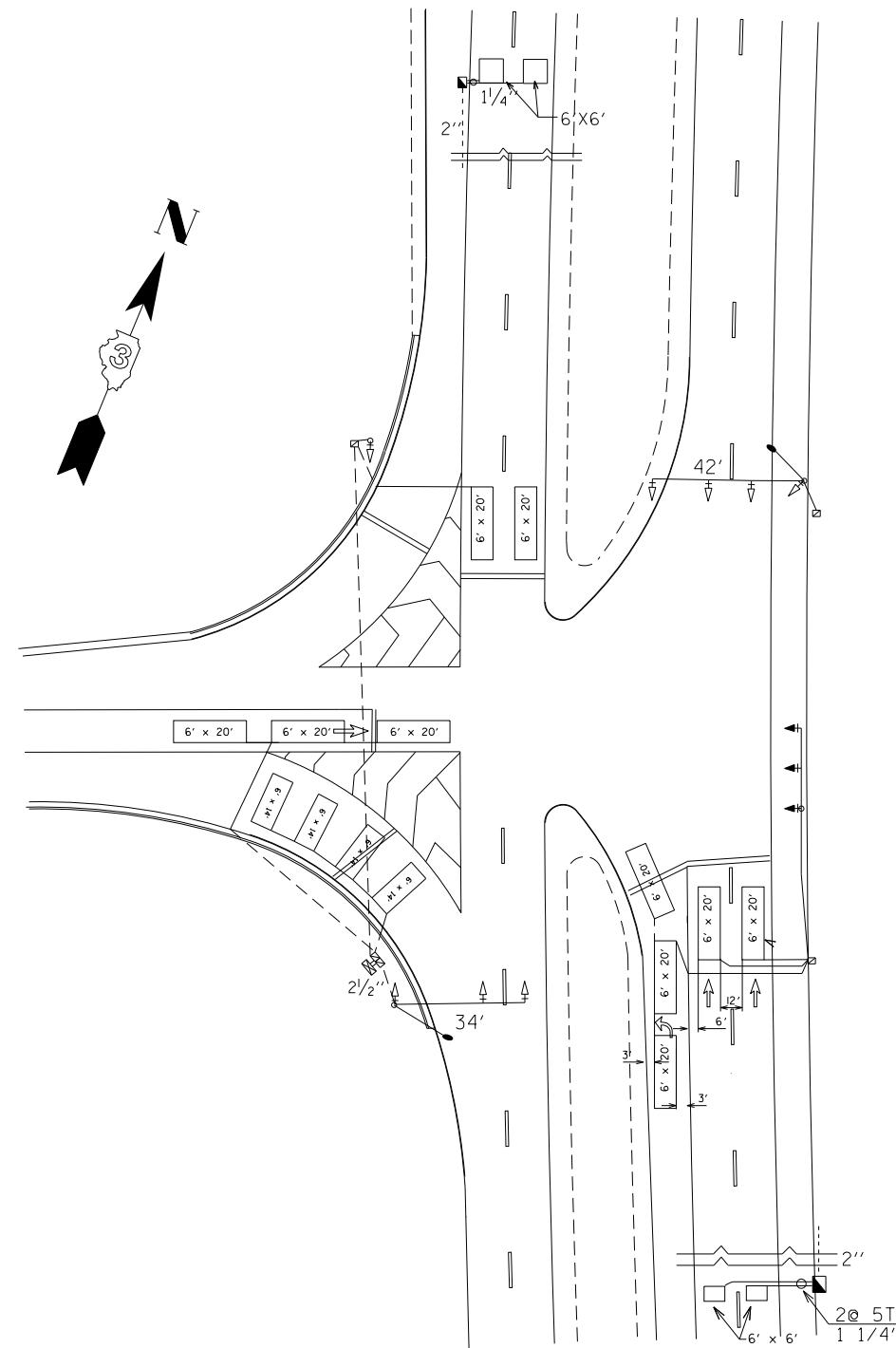


# SCHEDULE OF QUANTITIES

DESCRIPTION	UNIT	QUANTITY
DETECTOR LOOP, TYPE 1	FOOT	1046
LOOP DETECTOR TESTING	EACH	1



TRAFFIC SIGNAL GENERAL NOTES:  
 1. PLACE DETECTOR LOOPS IN BINDER  
 2. DETECTOR LOOPS SHALL HAVE FOUR TURNS  
 3. SAW CUT EXISTING DETECTOR LOOPS TO BE ABANDONED  
 4. THE DEPARTMENT OF TRANSPORTATION (8125-434-8506) SHALL BE NOTIFIED AT LEAST 72 HOURS PRIOR TO THE LAYOUT OF THE DETECTOR LOOPS

## TRAFFIC SIGNAL PLAN LEGEND

		CONTROLLER
		DETECTOR LOOP
		DETECTOR LOOP LINE
		UNDERGROUND CONDUIT
		HANDHOLE
		DOUBLE HANDHOLE
		HEAVY DUTY HANDHOLE
		PED. PUSHBUTTON DETECTOR
		PED. SIGNAL HEAD
		POWER POLE SERVICE
		SIGNAL HEAD W/ BACKPLATE
		SIGNAL POST
		STEEL MAST ARM
		WOOD POLE
		ELECTRICAL CABLE IN CONDUIT

FILE NAME =	USER NAME = duncanbd	DESIGNED -	REVISED -	<b>STATE OF ILLINOIS DEPARTMENT OF TRANSPORTATION</b>	<b>IL 251 &amp; MIDWAY ROAD TRAFFIC SIGNAL PLAN</b>			F.A.P. RTE.	SECTION	COUNTY	TOTAL SHEETS	SHEET NO.
et:\pw\work\p\idot\duncanbd\0296614\0366C07-sht-details.dgn	DRAWN -	REVISED -	46					(1,1)RS-4	LASALLE	54	44	
PLOT SCALE = 100.0000' / in.	CHECKED -	REVISED -	CONTRACT NO. 66C07									
PLOT DATE = 6/14/2014	DATE -	REVISED -	ILLINOIS FED. AID PROJECT									
				SCALE:	SHEET NO.	OF SHEETS	STA.	TO STA.				