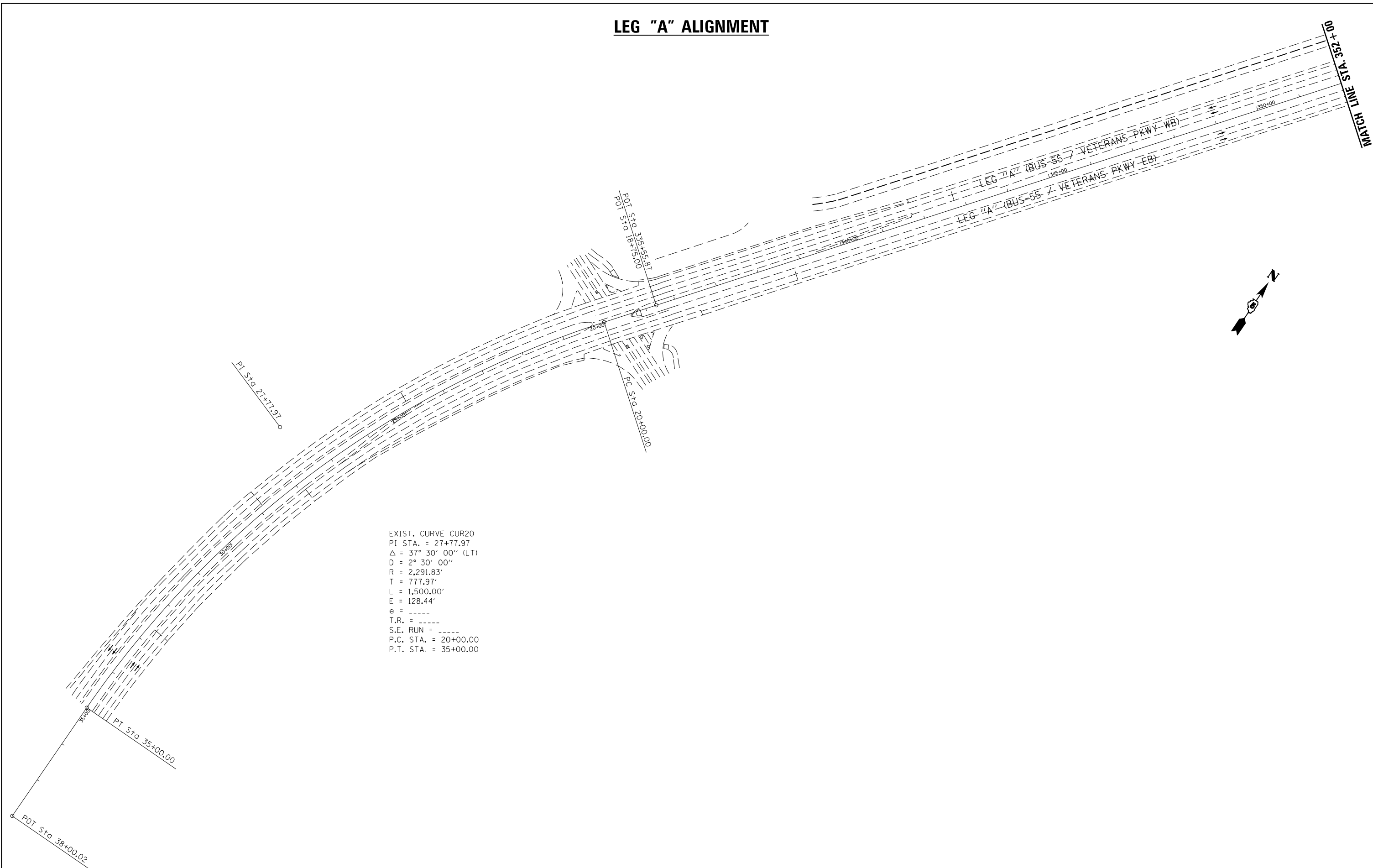


# LEG "A" ALIGNMENT



EXIST. CURVE CUR20  
 PI STA. = 27+77.97  
 $\Delta = 37^\circ 30' 00''$  (LT)  
 D = 2° 30' 00"  
 R = 2,291.83'  
 T = 777.97'  
 L = 1,500.00'  
 E = 128.44'  
 e = -----  
 T.R. = -----  
 S.E. RUN = -----  
 P.C. STA. = 20+00.00  
 P.T. STA. = 35+00.00

FILE NAME =	USER NAME = dodgems	DESIGNED -	REVISED -
et:\pw\work\p\dot\dodgems\d0267571\0570838-sht-ATB.dgn		DRAWN -	REVISED -
	PLOT SCALE = 200.0000' / in.	CHECKED -	REVISED -
	PLOT DATE = 6/11/2014	DATE -	REVISED -

**STATE OF ILLINOIS  
 DEPARTMENT OF TRANSPORTATION**

**BUS 55 PLAN SHEET - ALIGNMENT**

SCALE: 1" = 200' SHEET 1 OF 5 SHEETS STA. 38+00.00 TO STA. 352+00.00

F.A.P. RTE.	SECTION	COUNTY	TOTAL SHEETS	SHEET NO.
704	(57-7)RS-1&1RS-3	McLean	273	44
CONTRACT NO. 70838			ILLINOIS FED. AID PROJECT	