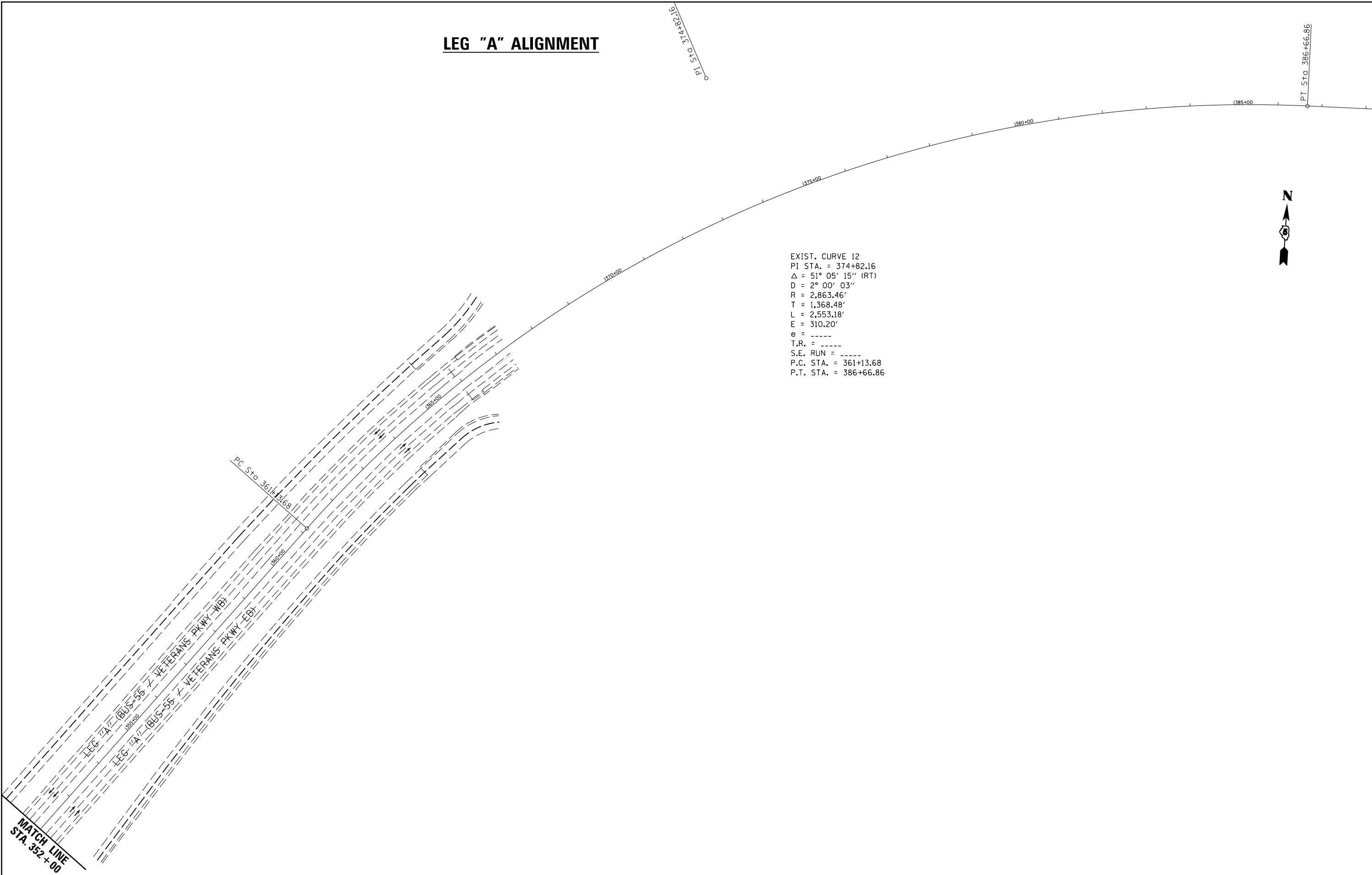


LEG "A" ALIGNMENT



EXIST. CURVE 12
 PI STA. = 374+82.16
 Δ = 51° 05' 15" (RT)
 D = 2° 00' 03"
 R = 2,863.46'
 T = 1,368.48'
 L = 2,553.18'
 E = 310.20'
 e = -----
 T.R. = -----
 S.E. RUN = -----
 P.C. STA. = 361+13.68
 P.T. STA. = 386+66.86



FILE NAME =	USER NAME = dodgems	DESIGNED -	REVISED -
et:\pw\work\p\dot\dodgems\d0267571\0570838-sht-ATB.dgn		DRAWN -	REVISED -
PLOT SCALE = 200.0000' / in.		CHECKED -	REVISED -
PLOT DATE = 6/11/2014		DATE -	REVISED -

STATE OF ILLINOIS
 DEPARTMENT OF TRANSPORTATION

BUS 55 PLAN SHEET - ALIGNMENT

SCALE: 1" = 200' SHEET 2 OF 5 SHEETS STA. 352+00.00 TO STA. 388+00.00

F.A.P. RTE.	SECTION	COUNTY	TOTAL SHEETS	SHEET NO.
704	(57-7RS-1&1RS-3	McLean	273	45
CONTRACT NO. 70838			ILLINOIS FED. AID PROJECT	