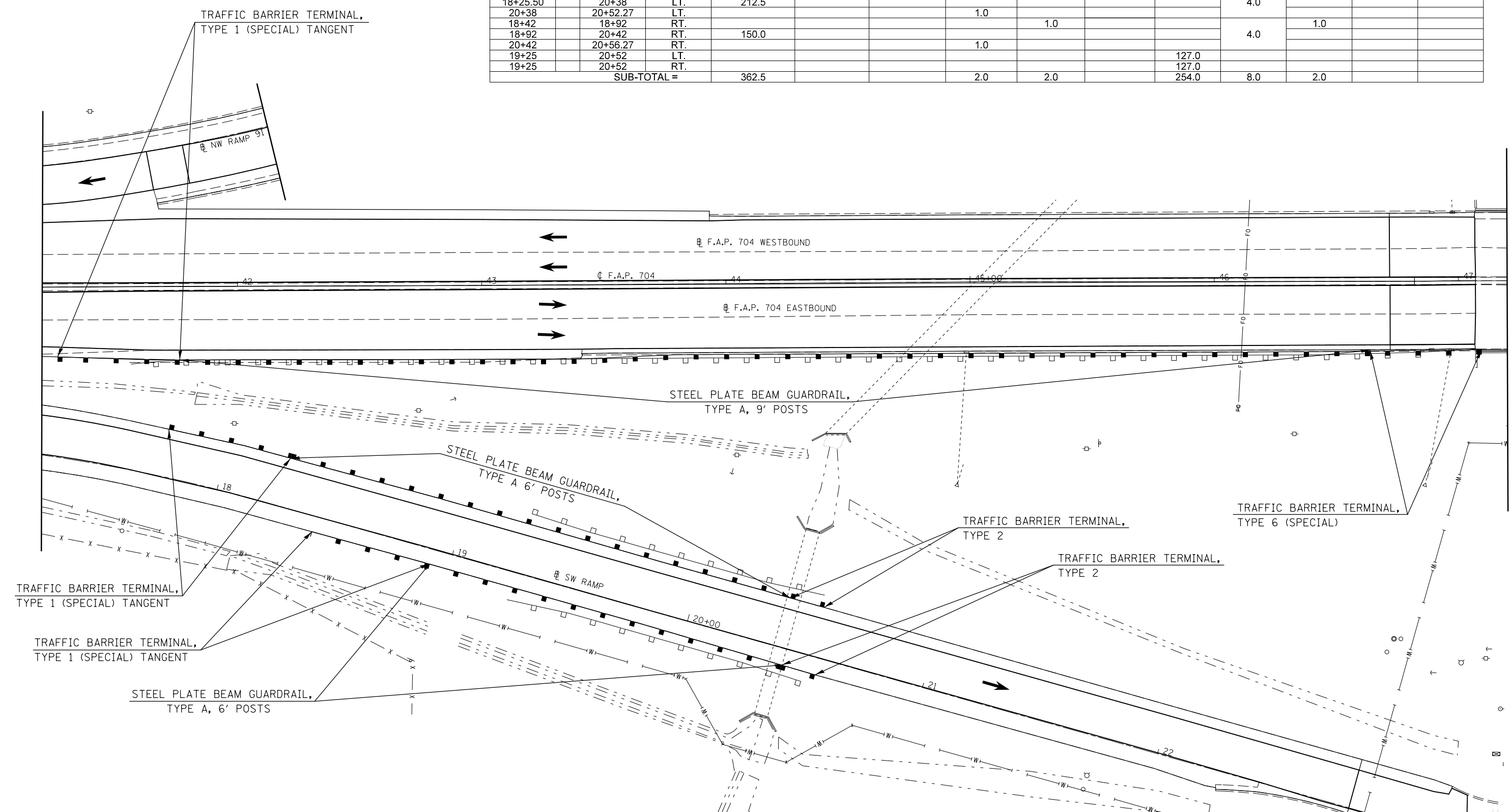


STA.	TO	STA.	DIRECTION	STEEL PLATE BEAM G'RAIL TYPE A 6 FT POSTS 63000001 (FOOT)	STEEL PLATE BEAM G'RAIL TYPE A 9 FT POSTS 63000003 (FOOT)	STEEL PLATE BEAM G'RAIL ATTACH TO STRUCTURE 63000025 (FOOT)	TRAF. BAR. TERM. TY. 2 63100045 (EACH)	TRAF. BAR. TERM. TY. 1 SPL. TAN. 63100167 (EACH)	TRAF. BAR. TERM. TY. 1 SPL. FLR. 63100169 (EACH)	GUARDRAIL REMOVAL 63200310 (FOOT)	G'RAIL MKR. TY. A 78200410 (EACH)	TERMINAL MARKER D A 78201000 (EACH)	TRAF. BAR. TERM. TY. 5 SPL. X6310179 (EACH)	TRAF. BAR. TERM. TY. 6 SPL. X6310214 (EACH)
LEG "C":														
41+26.17		41+76.17	EB					1.0				1.0		
41+76.17		46+63.67	EB		487.5						5.0			
46+63.67		47+09.32	EB											1.0
41+56		47+27	EB							571.0				
SUB-TOTAL =					487.5			1.0		571.0	5.0	1.0		1.0
SW RAMP:														
17+75.50		18+25.50	LT.					1.0				1.0		
18+25.50		20+38	LT.	212.5							4.0			
20+38		20+52.27	LT.				1.0							
18+42		18+92	RT.					1.0				1.0		
18+92		20+42	RT.	150.0							4.0			
20+42		20+56.27	RT.				1.0							
19+25		20+52	LT.							127.0				
19+25		20+52	RT.							127.0				
SUB-TOTAL =				362.5			2.0	2.0		254.0	8.0	2.0		



FILE NAME =	USER NAME = dodgems	DESIGNED -	REVISED -	STATE OF ILLINOIS DEPARTMENT OF TRANSPORTATION	GUARDRAIL PLAN SHEET	F.A.P. RTE.	SECTION	COUNTY	TOTAL SHEETS	SHEET NO.
et:\pw\work\p\dot\dodgems\d0267571\0570838-sht\plan_BUS55.dgn	DRAWN -	REVISED -	704			(57-7)RS-1&1RS-3	McLean	273	79	
PLOT SCALE = 40.0000' / in.	CHECKED -	REVISED -	CONTRACT NO. 70838							
PLOT DATE = 6/11/2014	DATE -	REVISED -	ILLINOIS FED. AID PROJECT							

SCALE: 1" = 20' SHEET 1 OF 7 SHEETS STA. 41+20.00 TO STA. 47+20.00