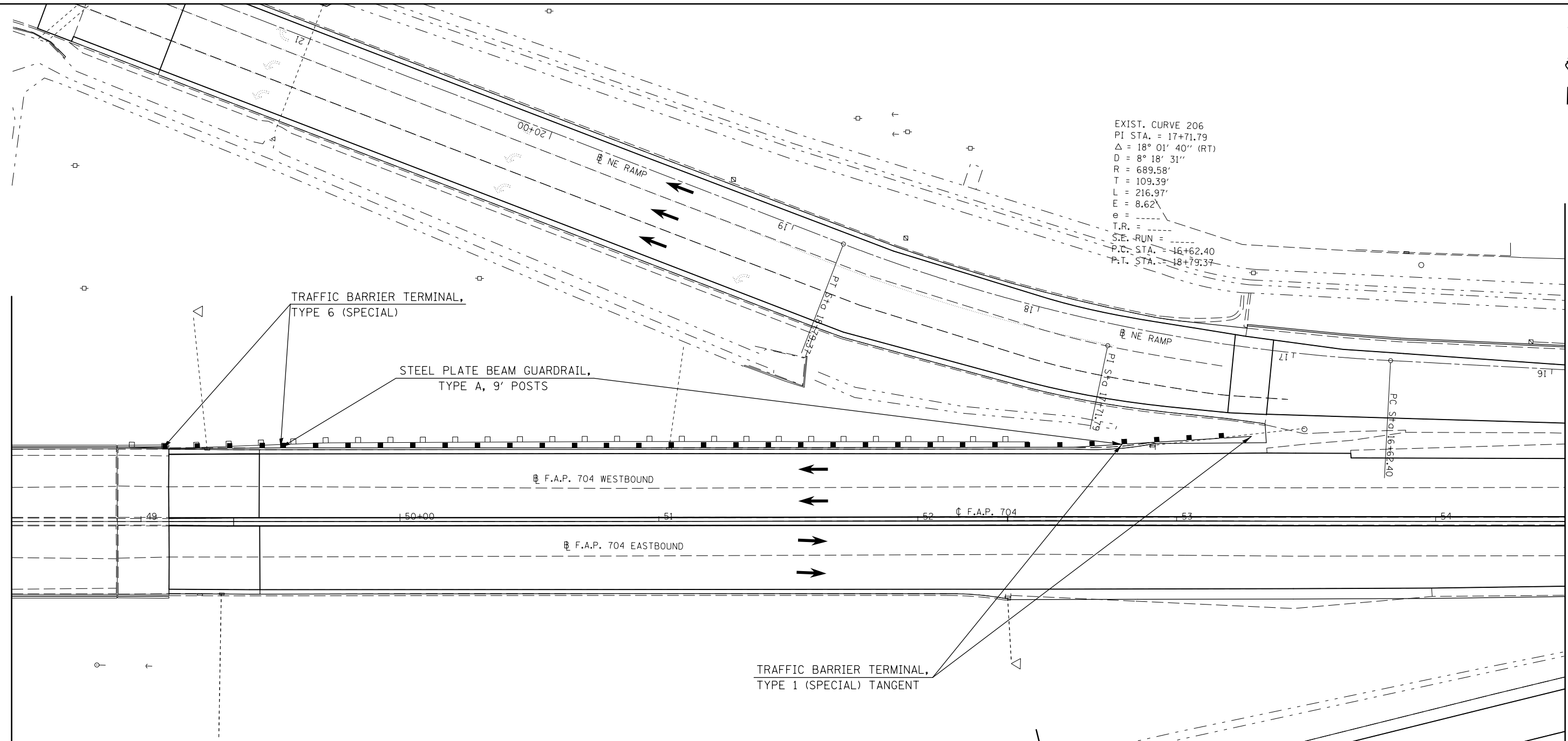




EXIST. CURVE 206
 PI STA. = 17+71.79
 $\Delta = 18^\circ 01' 40''$ (RT)
 $D = 8^\circ 18' 31''$
 $R = 689.58'$
 $T = 109.39'$
 $L = 216.97'$
 $E = 8.62'$
 $e =$
 T.R. =
 S.E. RUN =
 P.C. STA. = 16+62.40
 P.T. STA. = 18+79.37



STA.	TO	STA.	DIRECTION	STEEL PLATE BEAM G'RAIL TYPE A 9 FT POSTS 63000003 (FOOT)	TRAF. BAR. TERM. TY. 1 SPL. TAN. 63100167 (EACH)	GUARDRAIL REMOVAL 63200310 (FOOT)	G'RAIL MKR. TY. A 78200410 (EACH)	TERMINAL MARKER D A 78201000 (EACH)	TRAF. BAR. TERM. TY. 6 SPL. X6310214 (EACH)
LEG "C":									
49+08.24		49+53.89	WB				5.0		1.0
49+53.89		52+78.89	WB	325.0					
52+78.89		53+28.89	WB		1.0			1.0	
48+90		52+43	WB			353.0			
SUB-TOTAL =				325.0	1.0	353.0	5.0	1.0	1.0