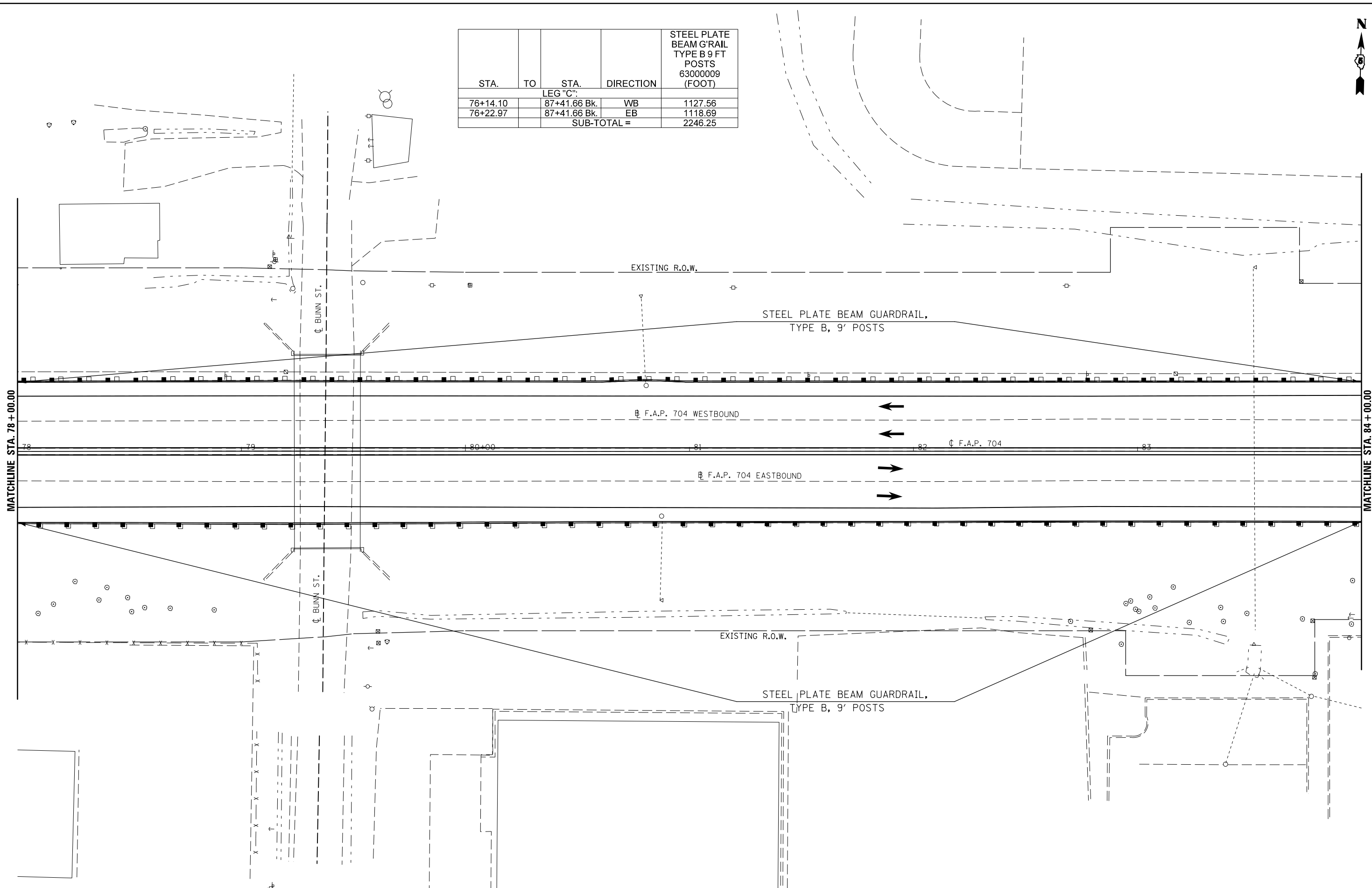




STA.	TO	STA.	DIRECTION	STEEL PLATE BEAM G'RAIL TYPE B 9 FT POSTS 63000009 (FOOT)
LEG "C":				
76+14.10		87+41.66 Bk.	WB	1127.56
76+22.97		87+41.66 Bk.	EB	1118.69
SUB-TOTAL =				2246.25



FILE NAME =	USER NAME = dodgems	DESIGNED -	REVISED -
et:\pw\work\p\dot\dodgems\d0267571\0570838-sht\plan_BU555.dgn		DRAWN -	REVISED -
	PLOT SCALE = 40.0000' / in.	CHECKED -	REVISED -
	PLOT DATE = 6/11/2014	DATE -	REVISED -

**STATE OF ILLINOIS
DEPARTMENT OF TRANSPORTATION**

GUARDRAIL PLAN SHEET

SCALE: 1" = 20' SHEET 6 OF 7 SHEETS STA. 78+00.00 TO STA. 84+00.00

F.A.P. RTE.	SECTION	COUNTY	TOTAL SHEETS	SHEET NO.
704	(57-7)RS-1&1RS-3	McLean	273	84
CONTRACT NO. 70838			ILLINOIS FED. AID PROJECT	