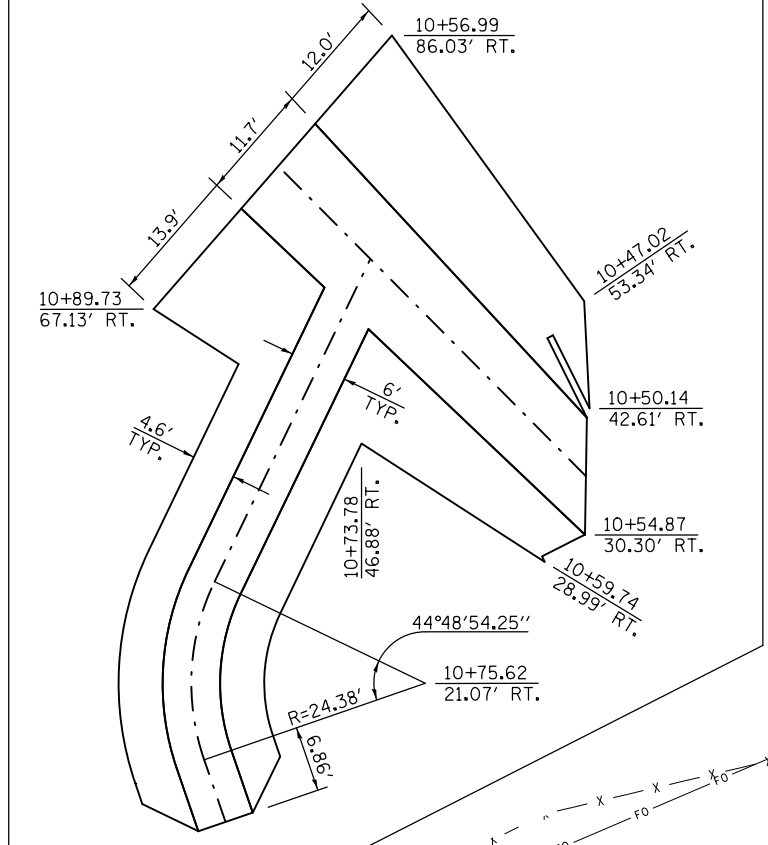


LAYOUT KEY FOR REPAIR AREA



B.M. 4920-8:  
A CHISELED SQUARE IN THE CENTER OF THE TOP  
OF THE NORTH HEADWALL OF S.N. 057-8204, RAMP  
STATION 11+00.00, 13.59' RT., ELEVATION  
808.85.

LIST OF QUANTITIES

ITEM	UNIT	TOTAL
TREE REMOVAL (OVER 15 UNITS Ø)	UNIT	25.0
STONE RIPRAP, CLASS A4	SQ YD	235.0
FILTER FABRIC	SQ YD	235.0

LEGEND

STONE RIPRAP, CLASS A4  
(16" + 6" OF BEDDING STONE  
AND FILTER FABRIC)

NOTES

SEE NEXT SHEET FOR PROPOSED  
RIPRAP STREAM CROSS SECTIONS.

PROPOSED STREAMBED  
S.N. 057-8199 DOWNSTREAM  
NW RAMP STA. 10+72.61  
77.02' RT., ELEV. 802.94'

PROPOSED STREAMBED  
S.N. 057-8204 DOWNSTREAM  
NW RAMP STA. 10+70.62  
60.82' RT., ELEV. 803.15'

PROPOSED STREAMBED  
S.N. 057-8204 DOWNSTREAM  
NW RAMP STA. 11+00.00  
14.17' RT., ELEV. 803.76'

PROPOSED STREAMBED  
S.N. 057-8199 DOWNSTREAM  
NW RAMP STA. 10+52.78  
36.04' RT., ELEV. 803.66'

EXISTING S.N. 057-8199  
FAP 730 (US-51) STA. 263+12  
R.C. BOX CULVERT  
1 @ 10'x3'6"x147'-0", SKEW: 35°

EXISTING S.N. 057-8204  
NW RAMP STA. 11+00  
R.C. BOX CULVERT  
1 @ 6'x4'x41'-4", SKEW: 0°

EXISTING S.N. 057-0063  
FAP 704 STATION 48+08.50  
3 SPAN STEEL WF BRIDGE  
167'-1" BK TO BK ABUT.  
59'-6" OUT TO OUT WIDTH  
0° SKEW

EXISTING S.N. 057-8203  
FAP 704 STA. 45+13.3  
R.C. BOX CULVERT  
1 @ 6'x4'x261'-8", SKEW: 45°

FAP 704 (I-55 BUSINESS)  
VETERANS PARKWAY

FAP 730 (US-51)  
MAIN STREET



FILE NAME =	USER NAME = dodgems	DESIGNED - GMS	REVISED -
ei:\pw\work\p\dodgem\d0267571\0570838-sht-Hyd.dgn		DRAWN - GMS	REVISED -
Default	PLOT SCALE = 48.0000' / in.	CHECKED - BJM	REVISED -
	PLOT DATE = 6/11/2014	DATE - 10-29-12	REVISED -

STATE OF ILLINOIS  
DEPARTMENT OF TRANSPORTATION

SCOUR MITIGATION PLAN  
S.N. 057-8199 & 057-8204

SCALE: SHEET OF SHEETS STA. TO STA.

F.A.P. RTE.	SECTION	COUNTY	TOTAL SHEETS	SHEET NO.
704	(57-7)RS-1 & IRS-3	McLean	273	124
CONTRACT NO. 70838				
ILLINOIS FED. AID PROJECT				