

BENCHMARK: BM 313 - Chiseled square on southwest corner of SN 093-0003, elev. 410.12 (NAVD 88)

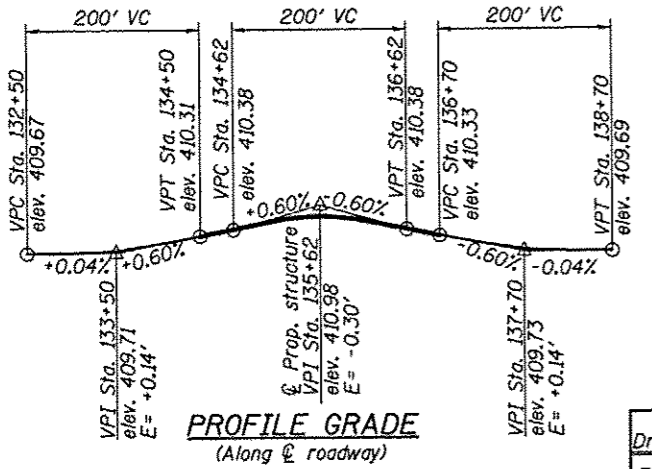
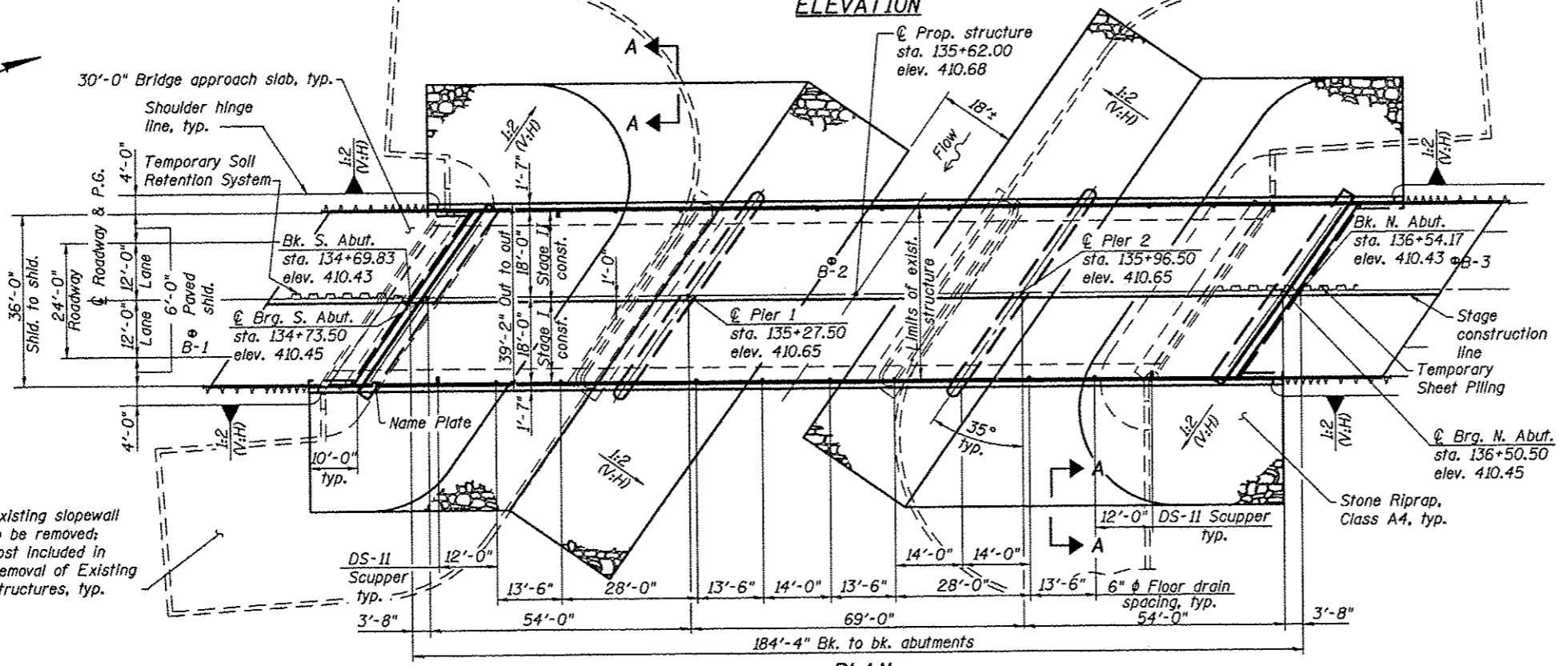
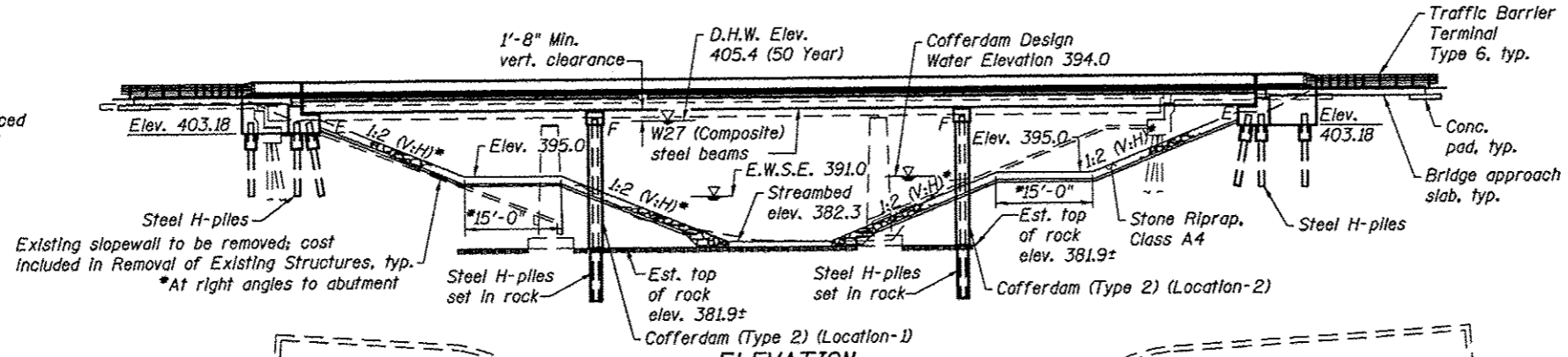
**EXISTING STRUCTURE:**  
SN 093-0003 was originally built as SBI 1, Section 12-B-2, in 1956. It is a three span continuous reinforced conc. slab deck on rolled steel beams supported by open abutments on steel piles and solid shaft piers on spread footings founded on rock. The deck width is 35'-8" and the length is 172'-0" back to back of abutments. The structure was constructed with a 35° ft. fwd. skew. Traffic shall be maintained utilizing stage construction

No salvage.

**STRUCTURE INDEX OF SHEETS**

- General Plan & Elevation
- General Data
- Stage Construction Details
- Temporary Concrete Barrier for Stage Construction
- Top of Slab Elevations
- Top of South Approach Slab Elevations
- Top of North Approach Slab Elevations
- Superstructure
- Superstructure Details
- Bridge Approach Slab Details
- Preformed Joint Strip Seal
- Drainage Scupper, DS-11
- Steel Framing Plan
- Steel Framing Details
- Bearing Details
- South Abutment
- North Abutment
- Abutment Details
- Pier 1
- Pier 2
- HP Pile Details
- Bar Splicer Assembly and Mechanical Splicer Details
- Cantilever Forming Brackets for Superstructures with W27 Beams and Smaller
- Boring Logs

- Sheet No. 1 of 31
- Sheet No. 2 of 31
- Sheet No. 3 of 31
- Sheet No. 4 of 31
- Sheet Nos. 5 & 6 of 31
- Sheet No. 7 of 31
- Sheet No. 8 of 31
- Sheet No. 9 of 31
- Sheet Nos. 10 & 11 of 31
- Sheet Nos. 12 & 13 of 31
- Sheet No. 14 of 31
- Sheet No. 15 of 31
- Sheet No. 16 of 31
- Sheet No. 17 of 31
- Sheet No. 18 of 31
- Sheet No. 19 of 31
- Sheet No. 20 of 31
- Sheet No. 21 of 31
- Sheet No. 22 of 31
- Sheet No. 23 of 31
- Sheet No. 24 of 31
- Sheet No. 25 of 31
- Sheet No. 26 of 31
- Sheet Nos. 27 thru 31 of 31



Design Scour Elevations (ft.)

S. Abut.	Pier 1	Pier 2	N. Abut.
403.2	381.5	381.5	403.2

**WATERWAY INFORMATION**

Exist. Low Grade Elev. = 408.28 Ft. @ Sta. 124+52.9  
 Prop. Low Grade Elev. = 408.28 Ft. @ Sta. 124+52.9

Flood	Freq. Yr.	Q C.F.S.	Opening-Sq. Ft.	Nat. Head-Ft.	Prop. Head-Ft.	Exist. Prop.	Exist. Prop.
Design	10	3420	1259	1333	403.1	0.2	0.2
Base	50	5370	1536	1631	405.4	0.3	0.3
Overtop	100	6230	1597	1764	406.4	0.4	0.3
	200	7140	1597	1770	407.6	0.6	0.5

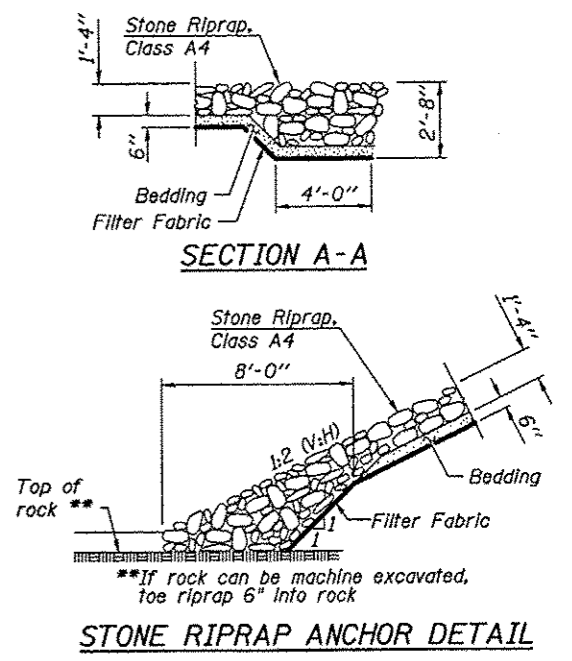
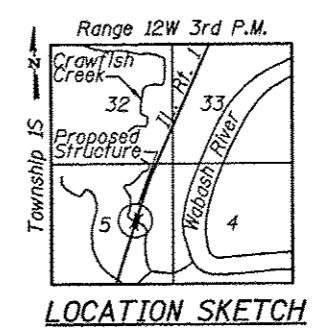
**APPROVED**  
For Structural Adequacy Only  
*Dr. Carl Ruppel*  
Engineer of Bridges & Structures

STATION 135+62.00  
BUILT 20L BY  
STATE OF ILLINOIS  
F.A.P. RT. 332 SEC. (12,B2)B-1  
LOADING HL-93  
STR. NO. 093-0025

**DESIGN SPECIFICATIONS**  
2012 AASHTO LRFD Bridge Design Specifications, 6th Edition  
**LOADING HL-93**  
Allow 50 psf for future wearing surface.

**DESIGN STRESSES**  
**FIELD UNITS**  
f'c = 3,500 psi  
fy = 60,000 psi (Reinf.)  
fy = 50,000 psi (M270 Grade 50)  
**SEISMIC DATA**  
Seismic Performance Zone (SPZ) = 2  
Design Spectral Acceleration at 1.0 sec (SD1) = 0.250g  
Design Spectral Acceleration at 0.2 sec (SDS) = 0.586g  
Soil Site Class = D

**NAME PLATE**  
(See Hwy. Std. 51500)



**GENERAL PLAN & ELEVATION**  
**IL 1 OVER CRAWFISH CREEK**  
**FAP ROUTE 332 - SECTION (12,B2)B-1**  
**WABASH COUNTY**  
**STATION 135+62.00**  
**STRUCTURE NO. 093-0025**

STATE OF ILLINOIS  
ENGINEER  
No. 6159  
EXPIRES 11-30-14  
*Carl Ruppel*  
SIGNATURE  
01-08-14  
DATE