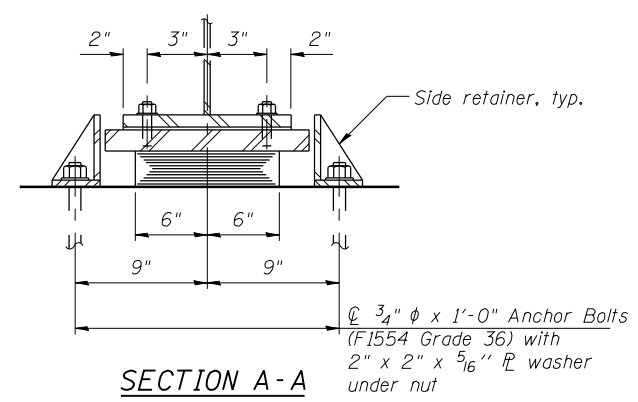
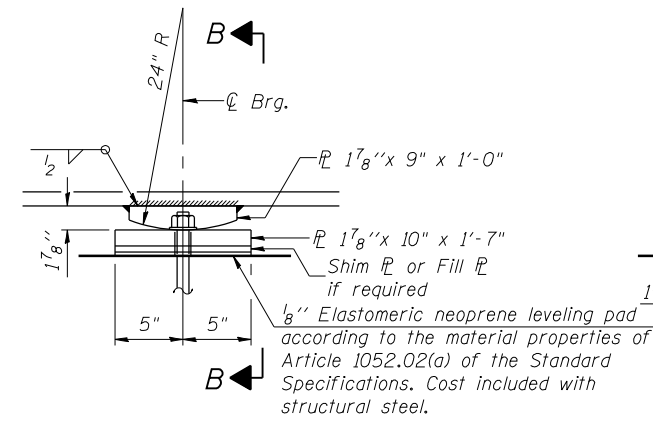


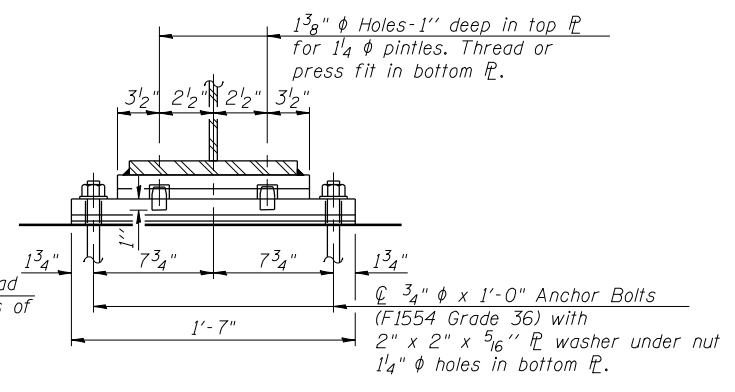
ELEVATION AT ABUT.



SECTION A-A



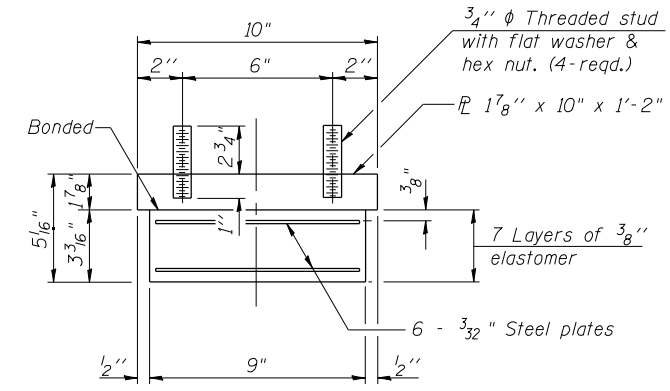
ELEVATION AT PIER



SECTION B-B

TYPE I ELASTOMERIC EXP. BRG.

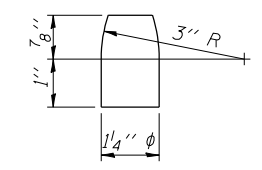
FIXED BEARING



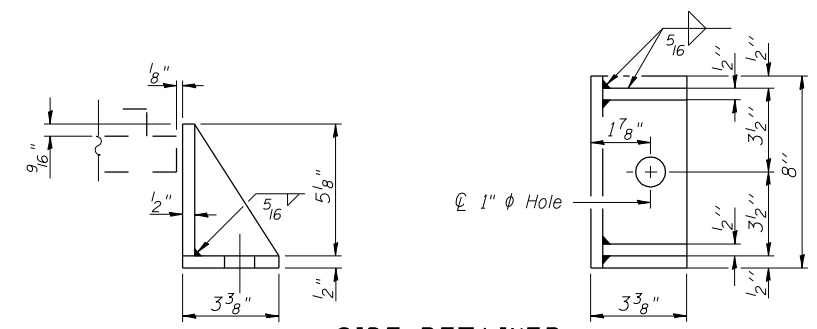
BEARING ASSEMBLY

Note:
Shim plates shall not be placed under bearing assembly.

Notes:
Anchor bolts shall be ASTM F1554 all-thread (or an Engineer-approved alternate material) of the grade(s) and diameter(s) specified. The corresponding specified grade of AASHTO M314 anchor bolts may be used in lieu of ASTM F1554.
Anchor bolts at fixed bearings may be either cast in place or installed in holes drilled after the supported member is in place.
Anchor bolts for side retainers may be cast in place or installed in holes drilled before or after members are in place.
Drilled and set anchor bolts shall be installed according to Article 521.06 of the Standard Specifications.
Side retainers and other steel members required for the elastomeric bearing assembly shall be included in the cost of Elastomeric Bearing Assembly, Type I.
The anchor bolt sizes and grades shown constitute a calculated seismic structural fuse. Substitution of higher diameter and/or grade anchor bolts will not be allowed.
Fill plates are required at the locations shown in the table below and shall be placed as shown on bearing details.
Two 1/8 in. adjusting shims shall be provided for each bearing in addition to all other plates or shims and placed as shown on bearing details.



PINTLE



SIDE RETAINER

Equivalent rolled angle with stiffeners will be allowed in lieu of welded plates.

BEARING FILL PLATES

Location	Thickness
South Abutment Beam 3	1"
South Abutment Beam 4	5/8"
Pier 1 Beam 3	1/8"
Pier 2 Beam 4	1/8"
North Abutment Beam 4	1"
North Abutment Beam 3	5/8"

BILL OF MATERIAL

Item	Unit	Total
Elastomeric Bearing Assembly Type I	Each	12
Anchor Bolts, 3/4"	Each	48

PRINT DRIVER = LUD-EBR014
 LUD-EBR014
 SCALE NAME = PLOT
 FILE NAME = 093026-74219-18-B-011.dwg



USER NAME = has	DESIGNED - SHL 12/12	REVISED -
ESCA PROJECT NO. 933.14	CHECKED - ELH/RDP 01/14	REVISED -
PLOT SCALE = 0/2" = 1" / IN.	DRAWN - HAS 12/12	REVISED -
PLOT DATE = 6/10/2014 8:52:26 AM	CHECKED - SHL 12/12	REVISED -

STATE OF ILLINOIS
DEPARTMENT OF TRANSPORTATION

BEARING DETAILS
STRUCTURE NO. 093-0025

SHEET NO. 18 OF 31 SHEETS

F.A.P. RTE. 332	SECTION (12,B2)B-1	COUNTY WABASH	TOTAL SHEETS 68	SHEET NO. 38
CONTRACT NO. 74219			ILLINOIS FED. AID PROJECT	