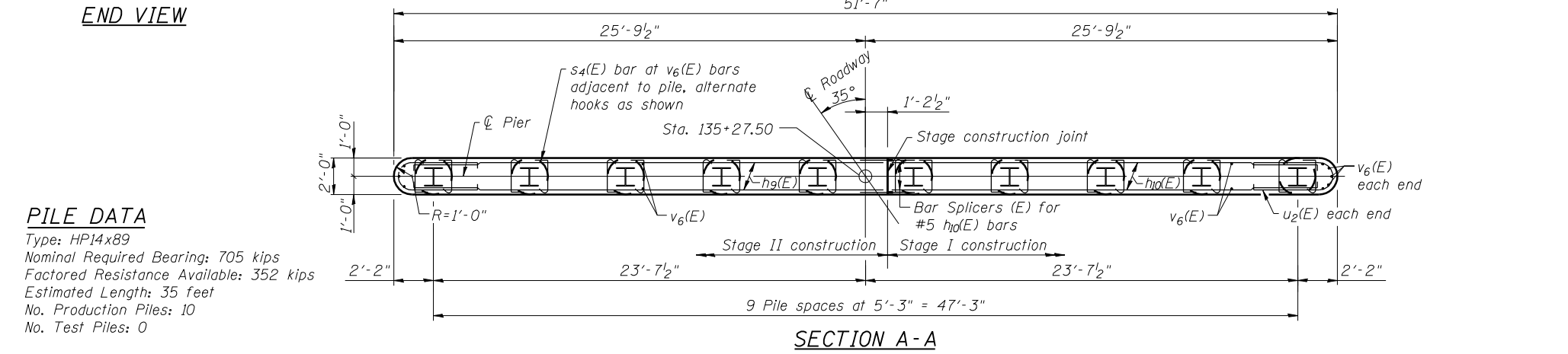
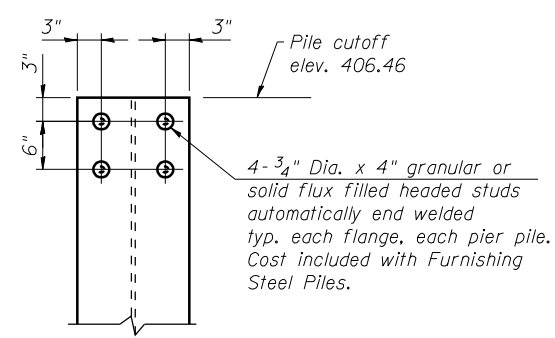
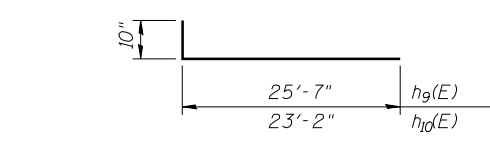
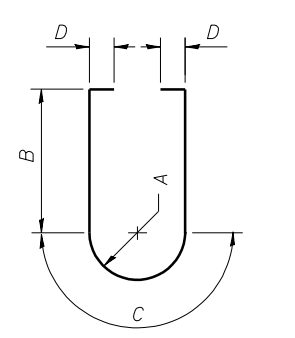
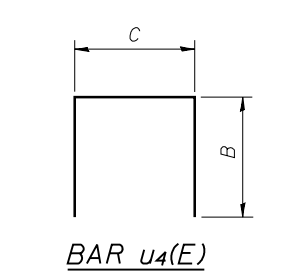
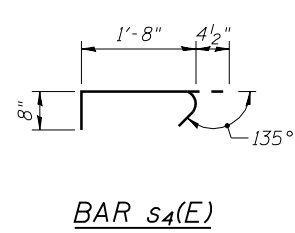
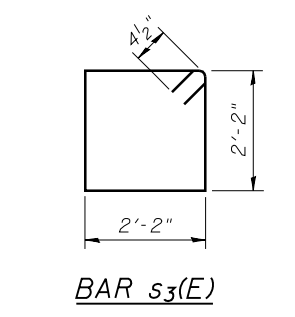
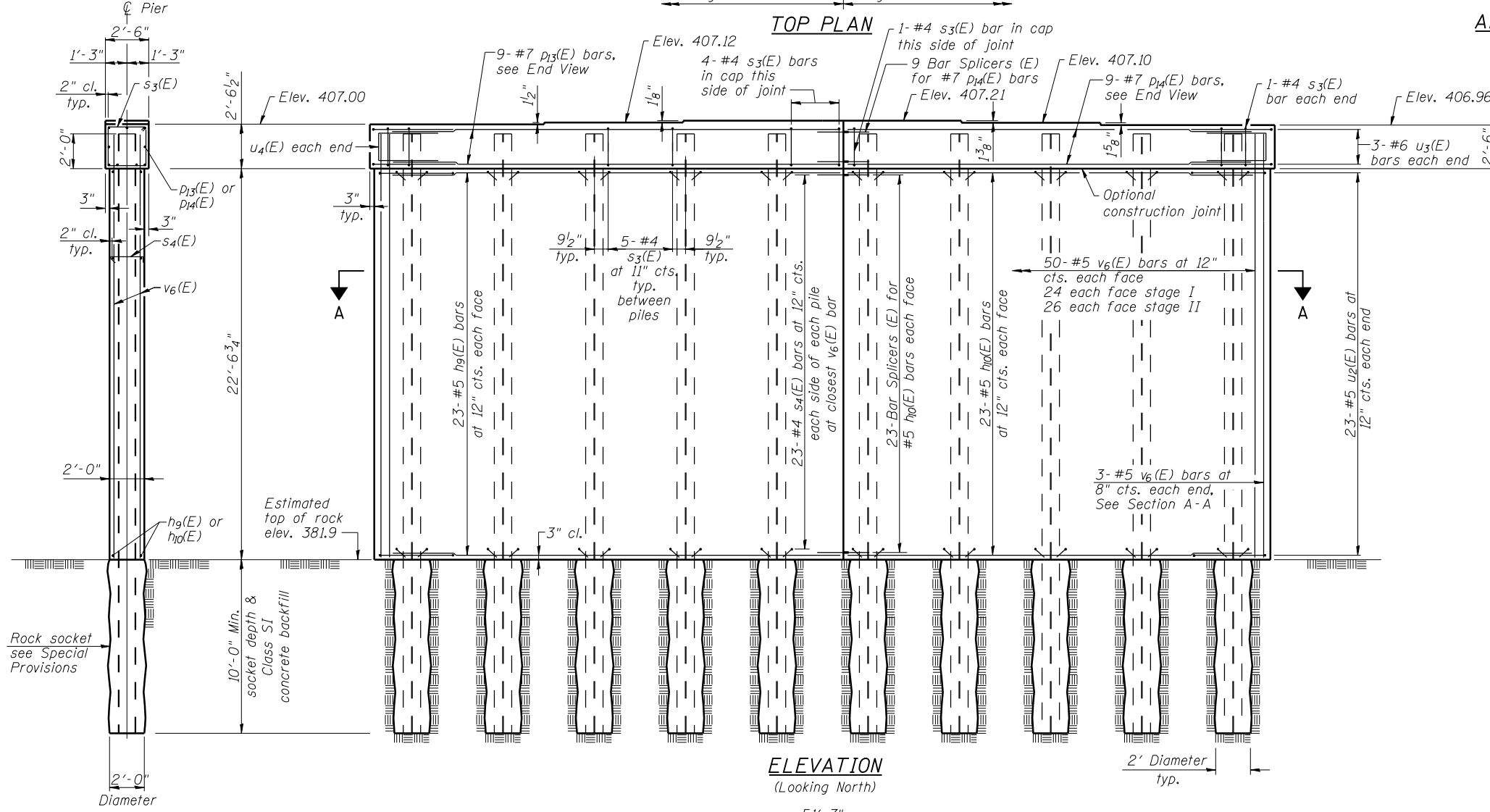


**PIER 1
BILL OF MATERIAL**

Bar	No.	Size	Length	Shape
hg(E)	46	#5	26'-5"	—
h0(E)	46	#5	24'-0"	—
p13(E)	9	#7	25'-10"	—
p14(E)	9	#7	23'-5"	—
s3(E)	47	#4	9'-5"	□
s4(E)	460	#4	2'-9"	—
u2(E)	46	#6	8'-8"	—
u3(E)	6	#6	8'-6"	—
u4(E)	4	#5	6'-4"	—
v6(E)	106	#5	24'-5"	—
Cofferdam Excavation	Cu. Yd.		250	
Concrete Structures	Cu. Yd.		98.1	
Reinforcement Bars, Epoxy Coated	Pound		7870	
Furnishing Steel Piles HP14x89	Foot		350	
Cofferdam (Type 2) (Location-1)	Each		1	
Setting Piles in Rock	Each		10	

For details of Bar Splicers, see sheet 25 of 31.
For details of piles, see sheet 24 of 31.
Space reinforcement in cap to miss anchor bolts.
Pour steps monolithically with cap.



PILE DATA
Type: HP14x89
Nominal Required Bearing: 705 kips
Factored Resistance Available: 352 kips
Estimated Length: 35 feet
No. Production Piles: 10
No. Test Piles: 0

A, B, C, & D DIMENSIONS

Bar	A	B	C	D
u2(E)	10"	2'-2"	2'-7 ³ / ₈ "	10"
u3(E)	1'-0 ¹ / ₂ "	2'-7"	3'-3 ¹ / ₄ "	
u4(E)		2'-2"	2'-0"	

PRINT DRIVER: LUD-ER-BAR-11
SCALE: 1/8" = 1'-0"
DATE: 6/10/2014



USER NAME = has	DESIGNED - ELH 12/12	REVISED -
ESCA PROJECT NO. 933.14	CHECKED - RDP 04/13	REVISED -
PLOT SCALE = 1/8" = 1'-0"	DRAWN - DWH 12/12	REVISED -
PLOT DATE = 6/10/2014 8:53:17 AM	CHECKED - ELH 01/14	REVISED -

**STATE OF ILLINOIS
DEPARTMENT OF TRANSPORTATION**

**PIER 1
STRUCTURE NO. 093-0025**

SHEET NO. 22 OF 31 SHEETS

F.A.P. RTE. 332	SECTION (12,B2)B-1	COUNTY WABASH	TOTAL SHEETS 68	SHEET NO. 42
CONTRACT NO. 74219			ILLINOIS FED. AID PROJECT	