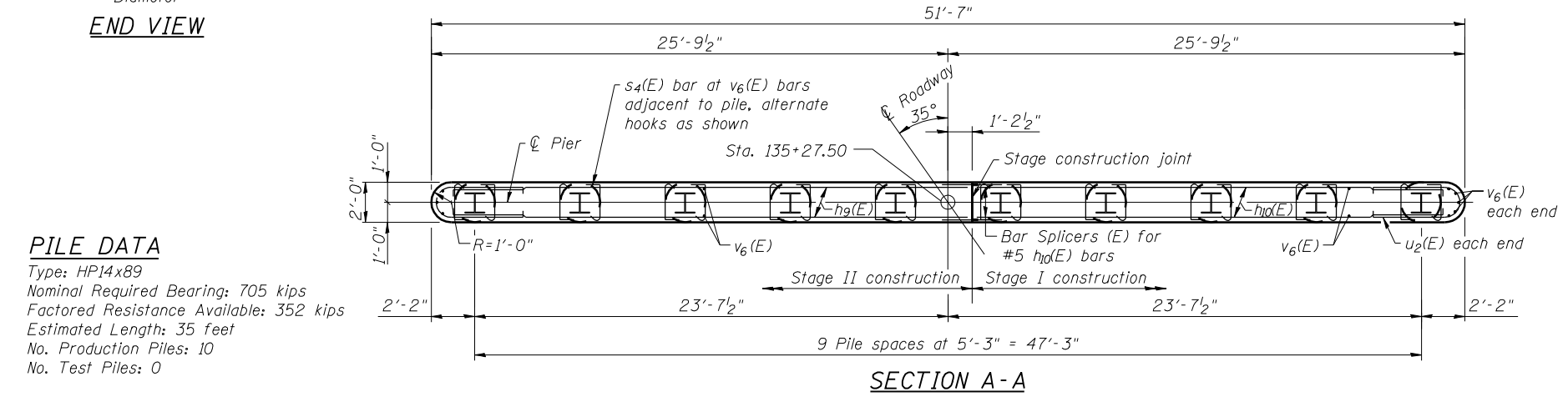
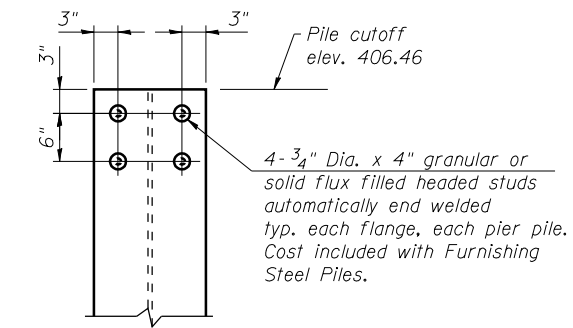
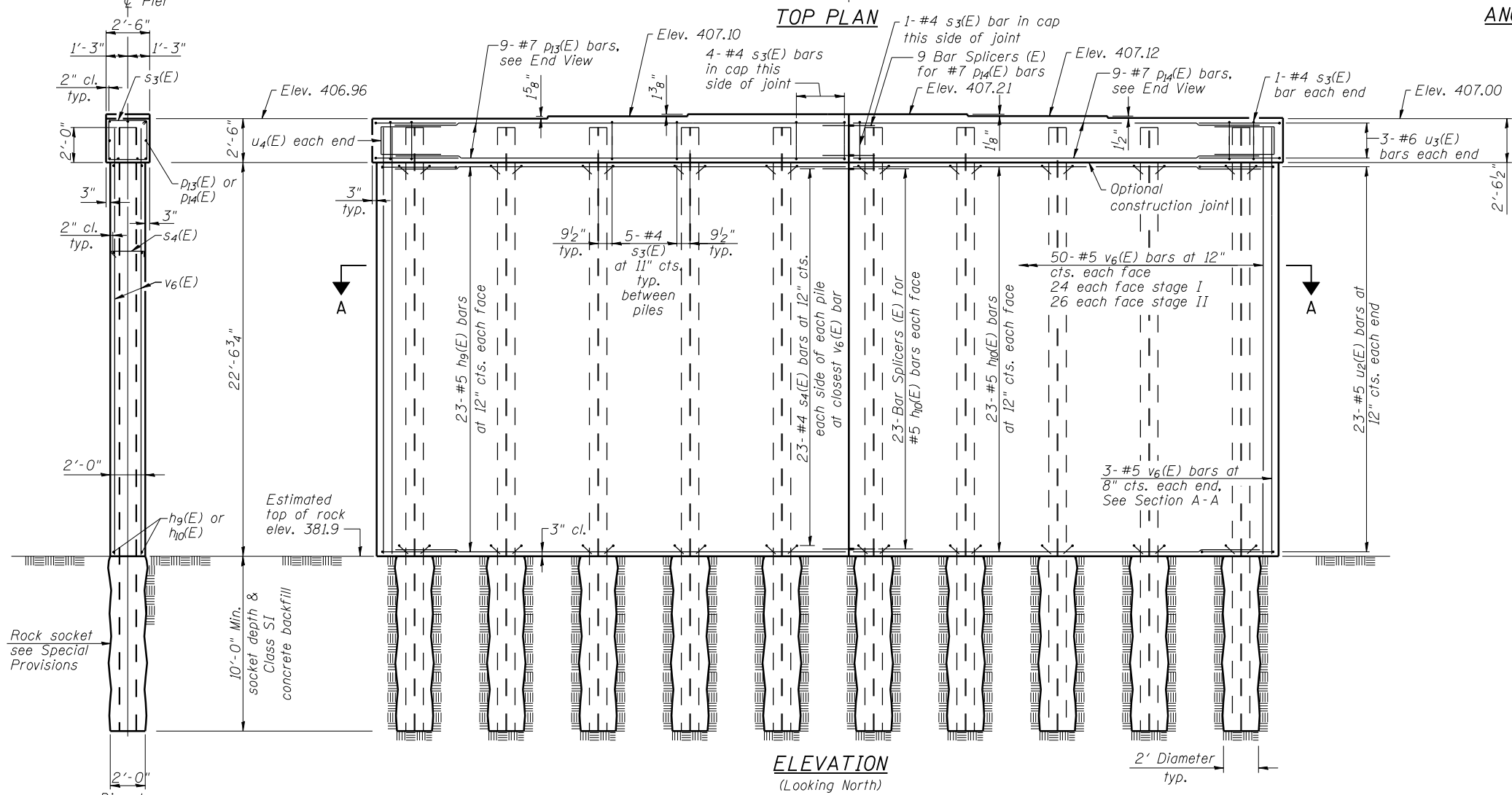


**PIER 2
BILL OF MATERIAL**

Bar	No.	Size	Length	Shape
hg(E)	46	#5	26'-5"	—
h0(E)	46	#5	24'-0"	—
p13(E)	9	#7	25'-10"	—
p14(E)	9	#7	23'-5"	—
s3(E)	47	#4	9'-5"	□
s4(E)	460	#4	2'-9"	—
u2(E)	46	#6	8'-8"	—
u3(E)	6	#6	8'-6"	—
u4(E)	4	#5	6'-4"	—
v6(E)	106	#5	24'-5"	—
Cofferdam Excavation	Cu. Yd.		270	
Concrete Structures	Cu. Yd.		98.1	
Reinforcement Bars, Epoxy Coated	Pound		7870	
Furnishing Steel Piles HP14x89	Foot		350	
Cofferdam (Type 2) (Location-2)	Each		1	
Setting Piles in Rock	Each		10	

For details of Bar Splicers, see sheet 25 of 31.
 For details of piles, see sheet 24 of 31.
 Space reinforcement in cap to miss anchor bolts.
 Pour steps monolithically with cap.
 For bar bending details, see sheet 22 of 31.



PILE DATA

Type: HP14x89
 Nominal Required Bearing: 705 kips
 Factored Resistance Available: 352 kips
 Estimated Length: 35 feet
 No. Production Piles: 10
 No. Test Piles: 0

PRINT DRIVER: LUD-ER-BAR-PAUL
 LUD-ER-BAR-PAUL
 SCALE: 1/8" = 1'-0"
 FILE NAME: PIER2-23-01-2014.dwg
 PLOT DATE: 6/10/2014 8:53:29 AM



USER NAME = has	DESIGNED - ELH 12/12	REVISED -
ESCA PROJECT NO. 0933.14	CHECKED - RDP 04/13	REVISED -
PLOT SCALE = 0/2" = 1' / IN.	DRAWN - DWH 12/12	REVISED -
PLOT DATE = 6/10/2014 8:53:29 AM	CHECKED - ELH 01/14	REVISED -

**STATE OF ILLINOIS
DEPARTMENT OF TRANSPORTATION**

**PIER 2
STRUCTURE NO. 093-0025**

SHEET NO. 23 OF 31 SHEETS

F.A.P. RTE.	SECTION	COUNTY	TOTAL SHEETS	SHEET NO.
332	(12,B2)B-1	WABASH	68	43
CONTRACT NO. 74219				

ILLINOIS FED. AID PROJECT