



Illinois Department of Transportation
Division of Highways
Illinois Department of Transportation

ROCK CORE LOG

Page 2 of 2

Date 4/14/09

ROUTE FAP 332 (IL 1) DESCRIPTION Crawfish Creek LOGGED BY E. Sandschafer

SECTION (12-B2)BR LOCATION East 1/2, SEC. 5, TWP. 1 S, RNG. 12 W, 3 PM

COUNTY Wabash CORING METHOD Rotary, surf set diamond bit

STRUCT. NO.	STATION	CORING BARREL TYPE & SIZE	NW	DEPTH (ft)	CORE (#)	RECOVERY (%)	R.Q.D. (%)	CORE TIME (min/ft)	STRENGTH (tsf)
093-0003	135+50	2.08 in							
3 N Abut	136+86	379.98 ft							
6.00ft Lt		378.98 ft							
		409.68 ft							

Gray, soft, SANDSTONE.	378.98	B3C1	38	7	0.2				
Rock Core B3C1 from 31.5' to 31.8' depth = 72 tsf. Rust Colored. No return from 32.6' to 35.7' depth.									
Reddish brown to gray, soft, moderately weathered, SANDSTONE	373.98	B3C2	57	0	0.23				
Severely Weathered. No return from 38.6' to 40.7' depth.									
Gray with red layers, soft, moderately to severely weathered, SANDSTONE.	368.98	B3C3	45	0	0.3				
No return from 42.9' to 45.7' depth.									
Extent of exploration.	363.98								
Benchmark: BM 313 Chiseled square on SW corner of existing bridge = 410.12' elevation. Provided by Program Development.									

Color pictures of the cores Available on request
Cores will be stored for examination until 04/09/13
The "Strength" column represents the uniaxial compressive strength of the core sample (ASTM D-2938)
BBS, form 138 (Rev. 8-99)

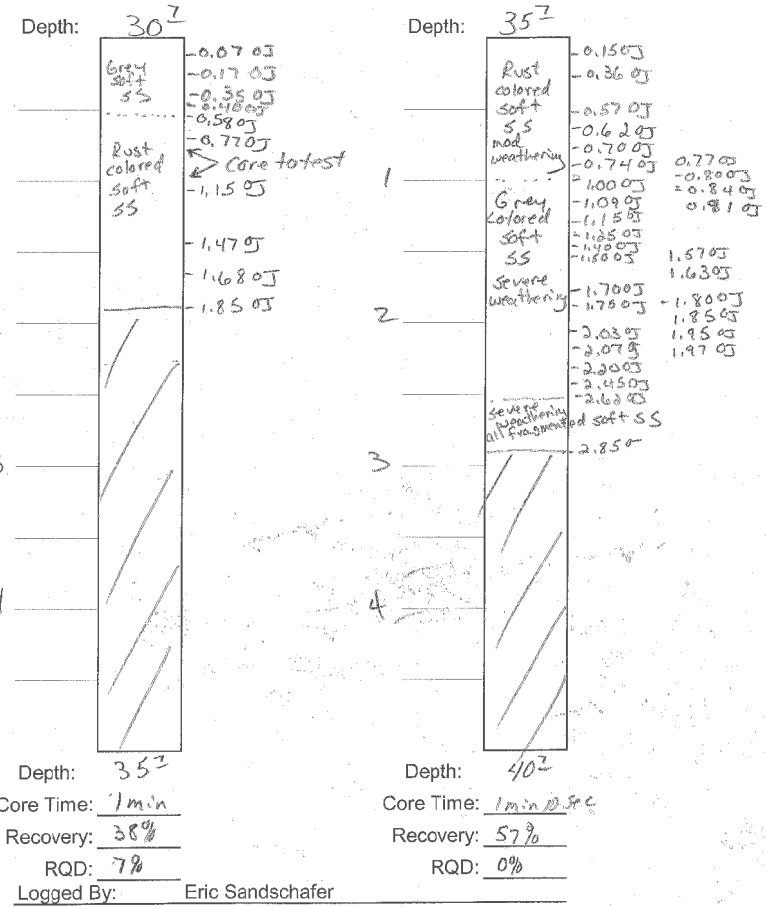
Field Rock Core Log a.xls

Field Rock Core Log

Date: 4-14-09

Structure #: 093-0003 Boring #: B3

Rock Core #: B3C1 Rock Core #: B3C2



PRINT DRIVER = L:\D-ELB\B3C1
PLOT MAKE MAKE = PLOT
FILE NAME = 093003-74219-38-50-1.dwg



USER NAME = has	DESIGNED - ELH 05/11	REVISED -
ESCA PROJECT NO. 933.14	CHECKED - RDP 04/13	REVISED -
PLOT SCALE = 0.2" = 1' / IN.	DRAWN - DWH 05/11	REVISED -
PLOT DATE = 6/10/2014 8:55:08 AM	CHECKED - ELH 05/11	REVISED -

**STATE OF ILLINOIS
DEPARTMENT OF TRANSPORTATION**

**BORING LOGS
STRUCTURE NO. 093-0025**

SHEET NO. 30 OF 31 SHEETS

F.A.P. RTE.	SECTION	COUNTY	TOTAL SHEETS	SHEET NO.
332	(12,B2)B-1	WABASH	68	50
CONTRACT NO. 74219				

ILLINOIS FED. AID PROJECT