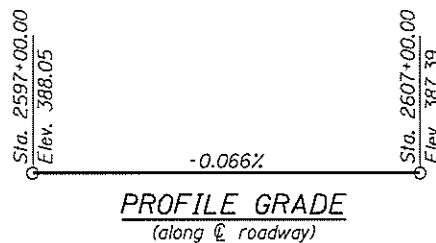


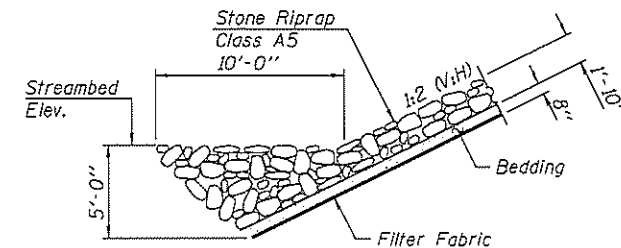
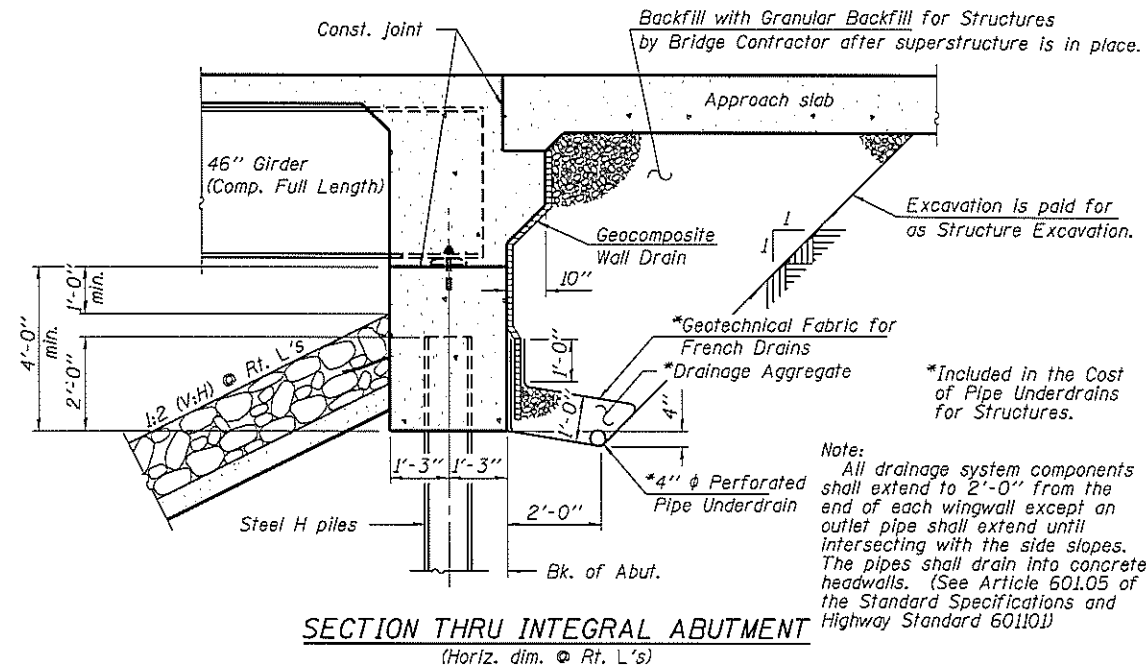
GENERAL NOTES

Fasteners shall be ASTM A325 Type 1, mechanically galvanized bolts in painted areas and ASTM A325 Type 3 in unpainted areas. Bolts $\frac{7}{8}$ " ϕ , holes $\frac{15}{16}$ " ϕ , unless otherwise noted.
 Calculated weight of Structural Steel = 523,320 Pounds.
 All structural steel shall be AASHTO M 270 Grade 50W.
 No field welding is permitted except as specified in the contract documents.
 Reinforcement bars designated (E) shall be epoxy coated.
 Bearing seat surfaces shall be constructed or adjusted to the designated elevations within a tolerance of $\frac{1}{8}$ inch (0.01 ft.). Adjustment shall be made either by grinding the surface or by shimming the bearings.
 Structural steel shall only be painted for a distance equal to the depth of embedment into the concrete cap plus 3 inches. Painted areas shall be primed in the shop with a Department approved zinc rich primer. Field painting will not be required.
 Layout of slope protection system may be varied to suit ground conditions in the field as directed by the Engineer.
 The embankment configuration shown shall be the minimum that must be placed and compacted prior to construction of the abutments.
 Slipforming of the parapets is not allowed.
 The 60'-0" Construction Berms located at each abutment shall be placed a minimum of 120 days before the abutment piles are driven. Monitoring plates shall be used in the embankments to verify that adequate settlement of the embankment cones has been achieved. The expected settlement is 4" at the South Abutment and 1 $\frac{1}{2}$ " at the North Abutment.

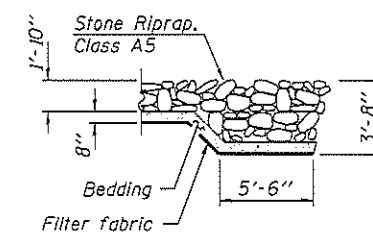


STATION 2601+44
 BUILT 201 BY
 STATE OF ILLINOIS
 F.A.P. RTE. 42 SEC. 13B-1
 LOADING HL-93
 STR. NO. 039-0077

NAME PLATE
 See Std. 515001



SECTION A-A



SECTION B-B

TOTAL BILL OF MATERIAL

ITEM	UNIT	SUPER	SUB	TOTAL
Stone Riprap, Class A5	Sq. Yd.			1,174
Filter Fabric	Sq. Yd.			1,174
Removal of Existing Structures	Each			1
Structure Excavation	Cu. Yd.			541
Cofferdam Excavation	Cu. Yd.			197
Cofferdam (Type 2) (Location - 1)	Each			1
Floor Drains	Each	47		47
Concrete Structures	Cu. Yd.		460.3	460.3
Concrete Superstructure	Cu. Yd.	740.0		740.0
Bridge Deck Grooving	Sq. Yd.	2,035		2,035
Concrete Encasement	Cu. Yd.		14.6	14.6
Protective Coat	Sq. Yd.	2,525	23	2,548
Furnishing and Erecting Structural Steel	L. Sum			1
Stud Shear Connectors	Each	7,176		7,176
Reinforcement Bars, Epoxy Coated	Pound	194,160	64,490	258,650
Bar Splicers	Each	80		80
Furnishing Steel Piles HP14x117	Foot		7,775	7,775
Driving Piles	Foot		7,775	7,775
Test Pile Steel HP14x117	Each		2	2
Pile Shoes	Each			104
Name Plates	Each			1
Anchor Bolts, 1"	Each		60	60
Geocomposite Wall Drain	Sq. Yd.			100
Asbestos Bearing Pad Removal	Each			55
Drainage Scuppers, DS-11	Each	5		5
Pipe Underdrains for Structures 4"	Foot			166
Mechanical Splicers	Each		244	244
Granular Backfill for Structures	Cu. Yd.			195