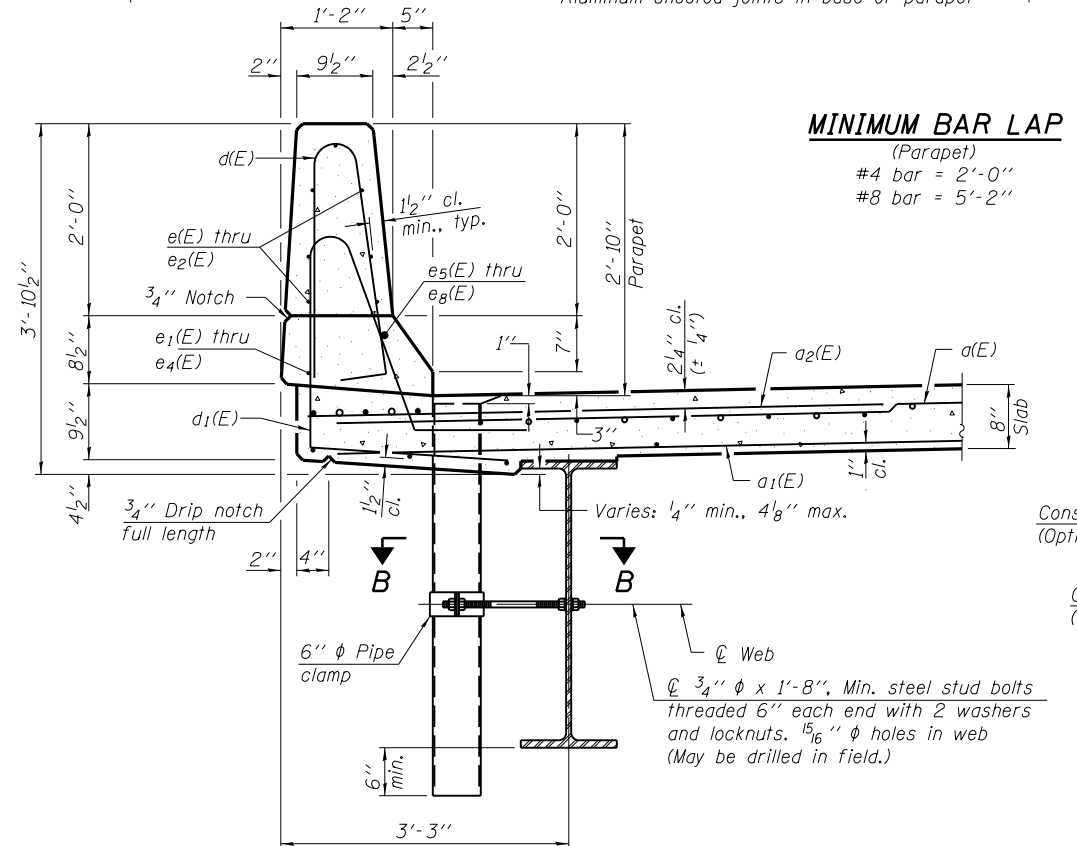
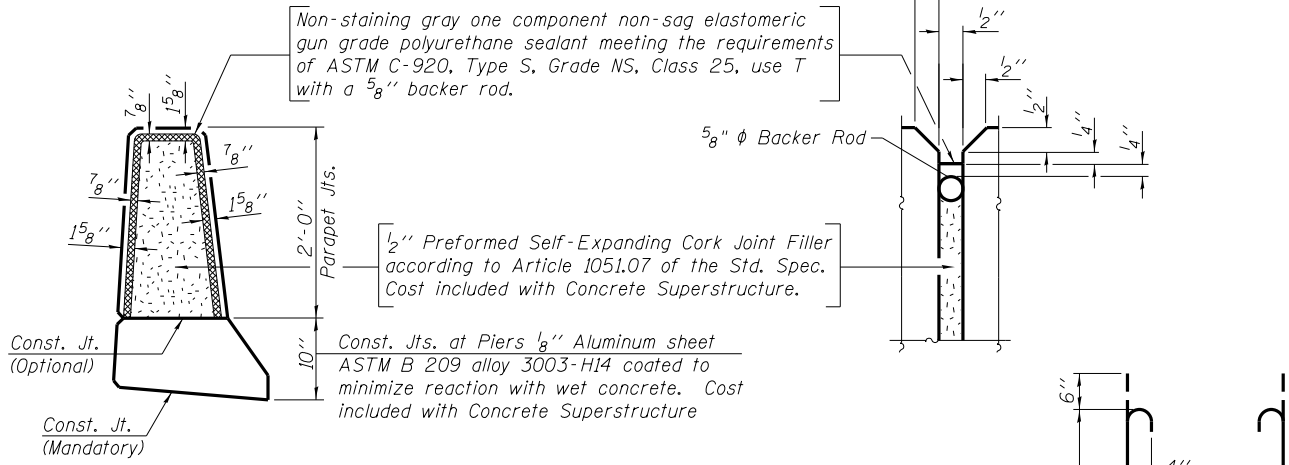


INSIDE ELEVATION OF PARAPET

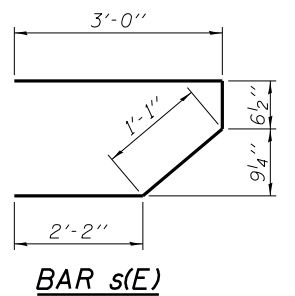


MINIMUM BAR LAP
(Parapet)
#4 bar = 2'-0"
#8 bar = 5'-2"

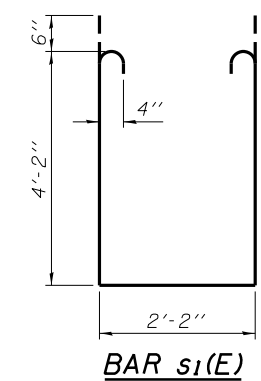


PARAPET JOINT DETAILS

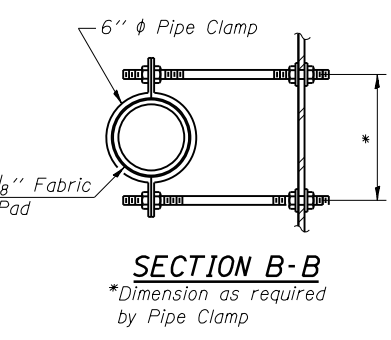
Notes:
Floor drains need not be painted.
Fiberglass pipe shall conform to ASTM D 2996, with short-time rupture strength hoop tensile stress of 30,000 p.s.i. minimum.
Galvanize clamping device according to AASHTO M232. Cost of clamping device and inserts is included with Floor Drains.
Drains shall be located clear of all diaphragms.



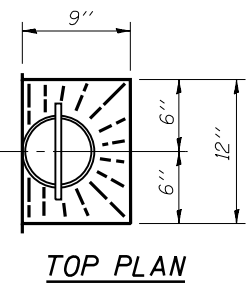
BAR s(E)



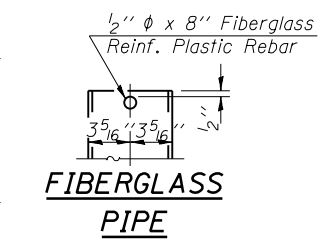
BAR s1(E)



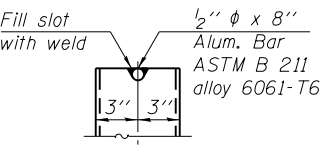
SECTION B-B
*Dimension as required by Pipe Clamp



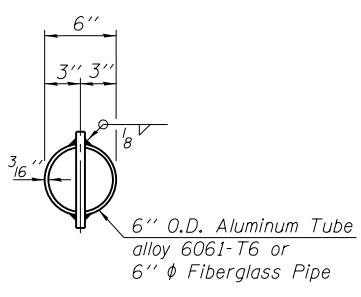
TOP PLAN



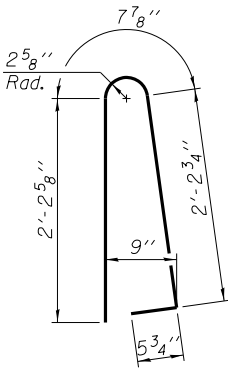
FIBERGLASS PIPE



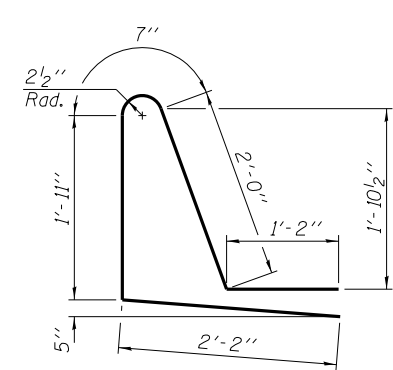
ALUMINUM TUBE



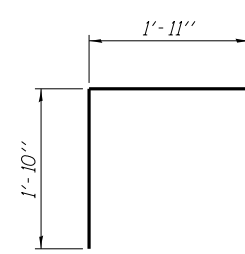
TOP PLAN
(Showing Aluminum Tube)



BAR d(E)



BAR d1(E)



BAR v(E)

BILL OF MATERIAL

BAR	NO.	SIZE	LENGTH	SHAPE
a(E)	1842	#5	22'-6"	—
a1(E)	1689	#5	15'-10"	—
a2(E)	1840	#6	6'-6"	—
a5(E)	40	#5	1'-6"	—
b(E)	690	#5	30'-7"	—
b1(E)	258	#6	22'-9"	—
b2(E)	129	#6	24'-9"	—
b3(E)	576	#5	28'-10"	—
d(E)	922	#5	5'-7"	⌒
d1(E)	922	#5	7'-10"	⌒
e(E)	252	#4	17'-7"	—
e1(E)	64	#4	15'-7"	—
e2(E)	32	#4	16'-7"	—
e3(E)	12	#4	25'-3"	—
e4(E)	16	#4	23'-11"	—
e5(E)	12	#8	27'-4"	—
e6(E)	8	#8	15'-7"	—
e7(E)	12	#8	33'-4"	—
e8(E)	4	#8	16'-7"	—
m(E)	20	#6	23'-1"	—
m1(E)	24	#6	10'-8"	—
m2(E)	10	#6	6'-11"	—
m3(E)	4	#6	2'-10"	—
s(E)	92	#5	6'-10"	⌒
s1(E)	82	#4	11'-6"	⌒
v(E)	80	#5	3'-9"	⌒

Concrete Superstructures	Cu. Yd.	605.4
Reinforcement Bars, Epoxy Coated	Pound	164,680

Bars indicated thus 40x15-#5 etc. indicates 40 lines of bars with 15 lengths per line.