

F.A.P. RTE.	SECTION	COUNTY	TOTAL SHEETS	SHEET NO.
881	34RS - 6	ILLINOIS	13	1
FED. ROAD DIST. NO.	ILLINOIS		CONTRACT NO. 78417	
*WILLIAMSON & JOHNSON				

FOR INDEX OF SHEETS, SEE SHEET NO. 3
FOR SUMMARY OF QUANTITIES, SEE SHEET NO. 5-6

STATE OF ILLINOIS
DEPARTMENT OF TRANSPORTATION
DIVISION OF HIGHWAYS

**PROPOSED
HIGHWAY PLANS**

FAP ROUTE 881 (US 45)
SECTION: 34RS-6

WILLIAMSON & JOHNSON COUNTIES
C-99-043-14

STATION EQUATIONS

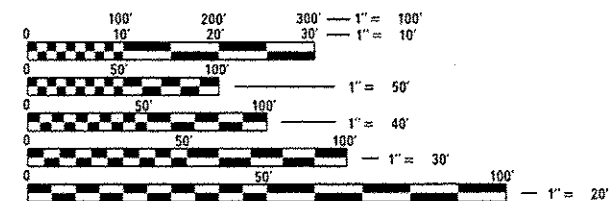
STA 758+98.4 @ BK = STA 758+97.7 @ AH
STA 838+00.0 @ BK = STA 838+28.2 @ AH
STA 875+23.7 @ BK = STA 875+00.0 @ AH
STA 903+32.3 @ BK = STA 903+32.7 @ AH
STA 942+87.1 @ BK = STA 942+84.7 @ AH

TRAFFIC DATA

US 45 TRAFFIC DATA
2015 ADT = 1790 WITH 13.7% TRUCKS
2035 ADT = 2180 WITH 13.5% TRUCKS

TOWNSHIPS

STONEFORT
NEW BURNSIDE

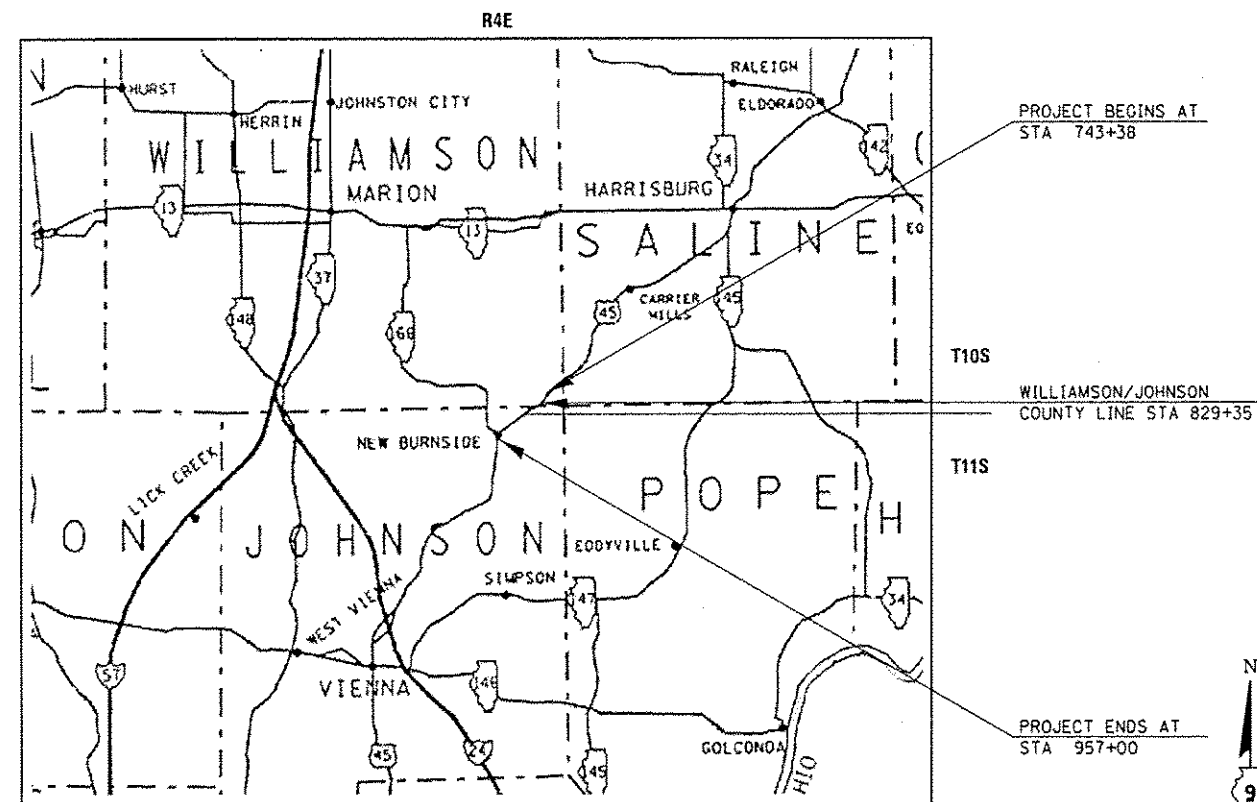


FULL SIZE PLANS HAVE BEEN PREPARED USING STANDARD ENGINEERING SCALES. REDUCED SIZED PLANS WILL NOT CONFORM TO STANDARD SCALES. IN MAKING MEASUREMENTS ON REDUCED PLANS, THE ABOVE SCALES MAY BE USED.

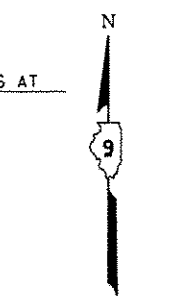
J.U.L.I.E.
JOINT UTILITY LOCATION INFORMATION FOR EXCAVATION
1-800-892-0123

PROJECT ENGINEER: CHARLES STEIN (618)351-5210
DESIGNER: HASHIM ABBAS

CONTRACT NO. 78417



GROSS LENGTH = 21360.2 FT = 4.05 MILE
NET LENGTH = 21360.2 FT = 4.05 MILE



LOCATION OF SECTION INDICATED THUS: - [black rectangle] -

STATE OF ILLINOIS
DEPARTMENT OF TRANSPORTATION
DIVISION OF HIGHWAYS

SUBMITTED June 13 2014
Ashley L. Keim
DEPUTY DIRECTOR OF HIGHWAYS, REGION 5 ENGINEER

July 18 2014
John D. Baranzelli, P.E.
ENGINEER OF DESIGN AND ENVIRONMENT

July 18 2014
Omer Osman, P.E.
DIRECTOR OF HIGHWAYS, CHIEF ENGINEER

PRINTED BY THE AUTHORITY
OF THE STATE OF ILLINOIS