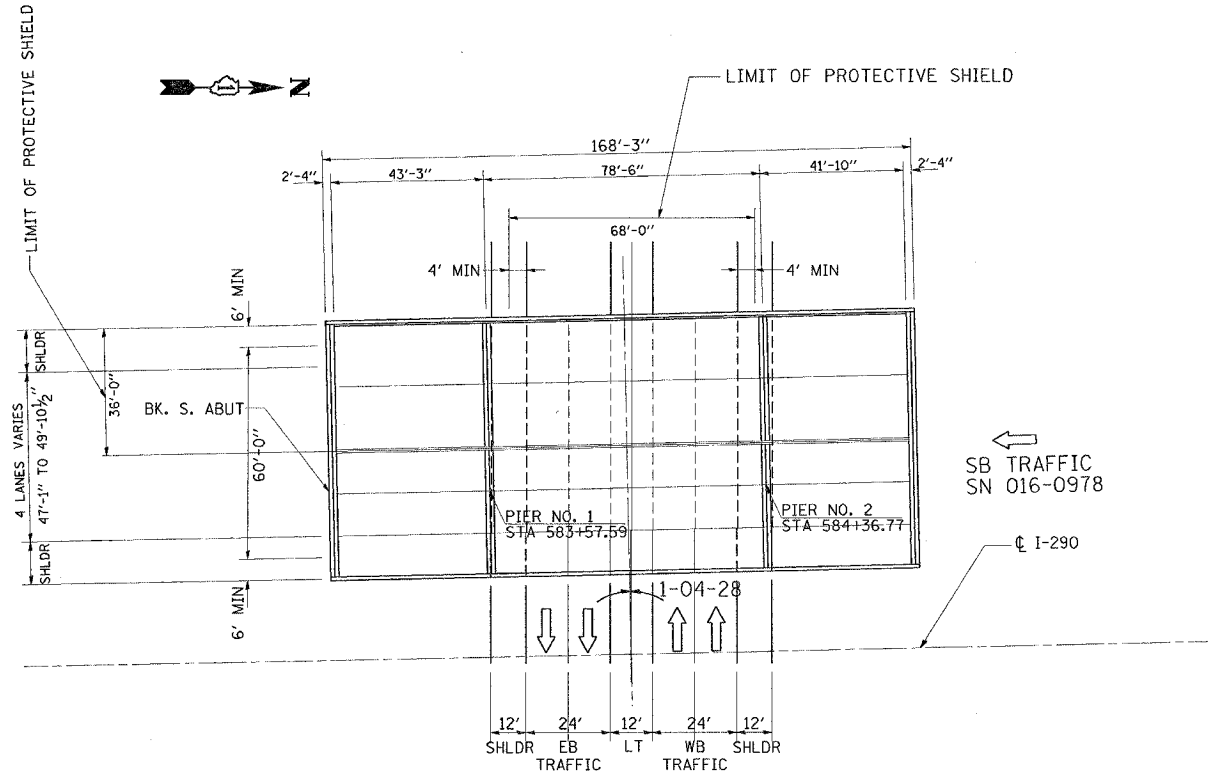


F.A.I. RTE.	SECTION	COUNTY	TOTAL SHEETS	SHEET NO.
290	2004-120-BR	COOK	29	10
STA.		TO STA.		
FED. ROAD DIST. NO.		ILLINOIS	FED. AID PROJECT	

SHEET 2 OF 2, LOCATION 3



PLOT DATE = 8/13/2005  
 FILE NAME = c:\projects\107985\107985.dwg  
 PLOT SCALE = 50.0000' / IN.  
 REFERENCE = #REF#

56:14 08/13/2005

REVISIONS		ILLINOIS DEPARTMENT OF TRANSPORTATION LOCATION 3 INTERSTATE ROUTE 290 OVER WOODFIELD ROAD PROTECTIVE SHIELD DETAILS S.N. 016-0978 (SB)
NAME	DATE	
SCALE:	VERT. DATE	HORIZ. 2/01/05
		DRAWN BY SHB CHECKED BY