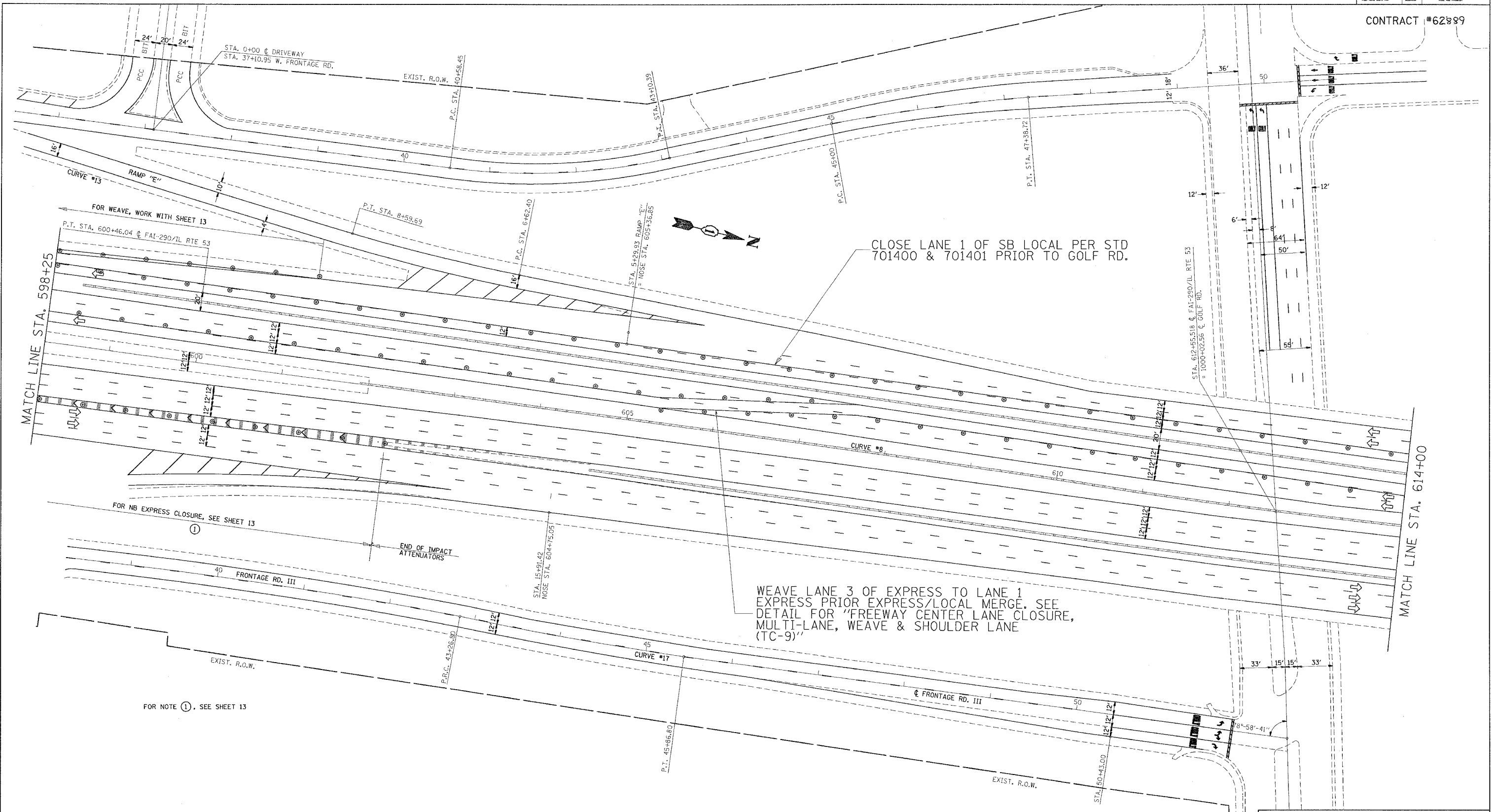


CONTRACT #62889



CLOSE LANE 1 OF SB LOCAL PER STD 701400 & 701401 PRIOR TO GOLF RD.

WEAVE LANE 3 OF EXPRESS TO LANE 1 EXPRESS PRIOR EXPRESS/LOCAL MERGE. SEE DETAIL FOR "FREEWAY CENTER LANE CLOSURE, MULTI-LANE, WEAVE & SHOULDER LANE (TC-9)"

FOR NOTE ①, SEE SHEET 13

FOR NB EXPRESS CLOSURE, SEE SHEET 13

FOR WEAVE, WORK WITH SHEET 13

REVISIONS	
NAME	DATE

ILLINOIS DEPARTMENT OF TRANSPORTATION  
 FAI 290/ILL RTE 53  
 TRAFFIC CONTROL DETAILS  
 SEQUENCE 1 AND 3

SCALE: VERT. \_\_\_\_\_  
 HORIZ. \_\_\_\_\_  
 DATE \_\_\_\_\_

DRAWN BY \_\_\_\_\_  
 CHECKED BY \_\_\_\_\_