

STATE OF ILLINOIS
DEPARTMENT OF TRANSPORTATION

F.A.U. RTE.	SECTION	COUNTY	TOTAL SHEETS	SHEET NO.
1360	2016-015BP	COOK	8	1
		ILLINOIS	CONTRACT NO. 62C31	

FOR INDEX OF SHEETS, SEE SHEET NO. 2

THIS IMPROVEMENT IS LOCATED
IN THE CITY OF CHICAGO

**PROPOSED
HIGHWAY PLANS**

F.A.U. ROUTE 1360 – FOSTER AVE
OVER NORTH BRANCH CHICAGO RIVER
SECTION 2016-015BP
BRIDGE PAINTING
COOK COUNTY

C-91-330-16

TRAFFIC DATA

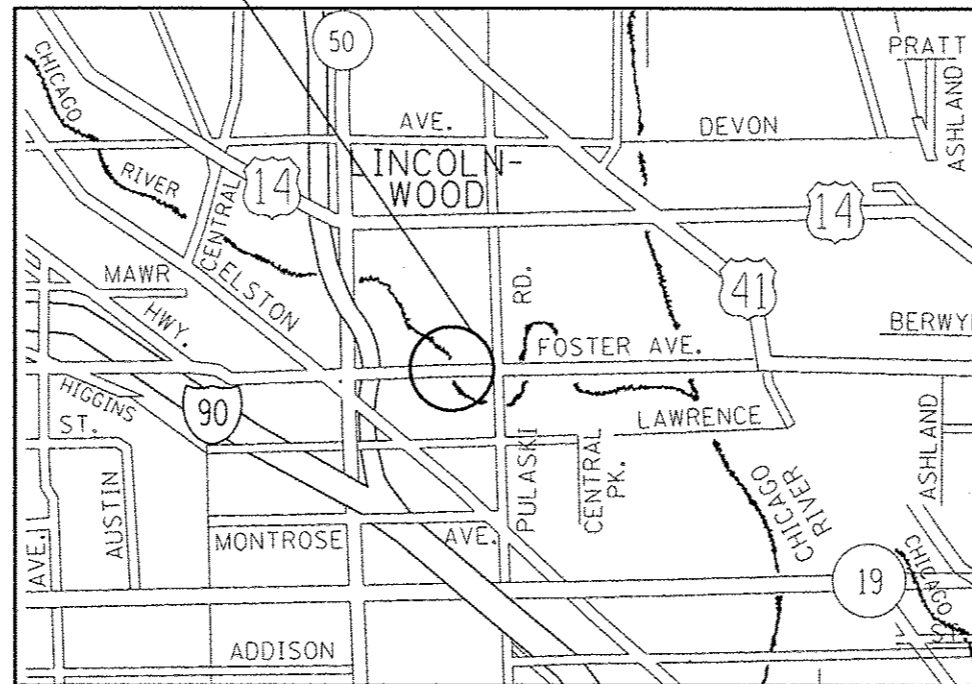
FOSTER AVE:

2014 ADT = 27600

SPEED LIMIT = 30 MPH

IMPROVEMENT LOCATION
SN 016-0248

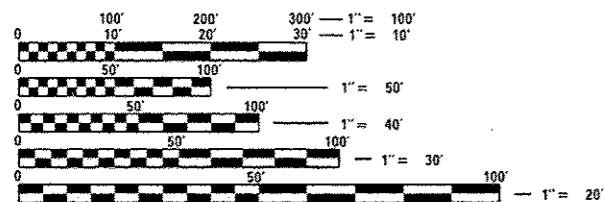
R 13 E



JEFFERSON TOWNSHIP



LOCATION OF SECTION INDICATED THUS: - [black rectangle]



FULL SIZE PLANS HAVE BEEN PREPARED USING STANDARD ENGINEERING SCALES. REDUCED SIZED PLANS WILL NOT CONFORM TO STANDARD SCALES. IN MAKING MEASUREMENTS ON REDUCED PLANS, THE ABOVE SCALES MAY BE USED.

C.U.A.N.
CHICAGO UTILITY ALERT NETWORK
1-312-744-7000

PROJECT ENGINEER – J.ALAIN MIDY (847) 221-3056
PROJECT MANAGER – ISSAM RAYYAN (847) 705-4178

CONTRACT NO. 62C31

STATE OF ILLINOIS
DEPARTMENT OF TRANSPORTATION

SUBMITTED June 29 2016

[Signature]
REGIONAL ENGINEER

Aug 12 2016
[Signature]
ENGINEER OF DESIGN AND ENVIRONMENT

Aug 12 2016
[Signature]
DIRECTOR OF PROGRAM DEVELOPMENT

PRINTED BY THE AUTHORITY
OF THE STATE OF ILLINOIS

INDEX OF SHEETS

SHEET NO. DESCRIPTION

- 1. COVER SHEET
- 2. INDEX OF SHEETS, STATE STANDARDS, AND GENERAL NOTES
- 3. SOO
- 4-6. BRIDGE DETAILS
- 7. TRAFFIC CONTROL AND PROTECTION FOR SIDE ROADS, INTERSECTIONS, AND DRIVEWAYS (TC-10)
- 8. ARTERIAL ROAD INFORMATION SIGN (TC-22)

STATE STANDARDS

STD. NO. DESCRIPTION

- 701101-05 OFF-RD OPERATIONS, MULTILANE, 15' TO 24" FROM PAVEMENT EDGE
- 701106-02 OFF-RD OPERATIONS, MULTILANE, MORE THAN 15' AWAY
- 701606-10 URBAN LANE CLOSURE, MULTILANE, 2W WITH MOUNTABLE MEDIAN
- 701801-06 SIDEWALK, CORNER OR CROSSWALK CLOSURE
- 701901-05 TRAFFIC CONTROL DEVICES

GENERAL NOTES

BEFORE STARTING ANY EXCAVATION, THE CONTRACTOR SHALL CALL "C.U.A.N." (CHICAGO UTILITY ALERT NETWORK) AT (312) 744-7000 FOR FIELD LOCATIONS OF BURIED ELECTRIC, TELEPHONE AND GAS UTILITIES. (48 HOUR NOTIFICATION IS REQUIRED)

THE CONTRACTOR SHALL COORDINATE CONSTRUCTION ACTIVITIES WITH UTILITY COMPANIES, AND THE CITY OF CHICAGO.

THE CONTRACTOR WILL NOT BE ALLOWED TO SET UP A YARD OR FIELD OFFICE ON STATE PROPERTY WITHOUT WRITTEN PERMISSION FROM THE DEPARTMENT.

THE CONTRACTOR SHALL CONTACT THE DISTRICT ONE TRAFFIC CONTROL SUPERVISOR AT (847) 705-4470 A MINIMUM OF 72 HOURS IN ADVANCE OF BEGINING WORK.

PLAN DIMENSIONS AND DETAILS RELATIVE TO EXISTING PLANS ARE SUBJECT TO NOMINAL CONSTRUCTION VARIATIONS. THE CONTRACTOR SHALL FIELD VERIFY EXISTING DIMENSIONS AND DETAILS AFFECTING NEW CONSTRUCTION AND MAKE NECESSARY APPROVED ADJUSTMENTS PRIOR TO CONSTRUCTION OR ORDERING OF MATERIALS. SUCH VARIATIONS SHALL NOT BE CAUSE FOR ADDITIONAL COMPENSATION FOR A CHANGE IN SCOPE OF THE WORK. HOWEVER, THE CONTRACTOR WILL BE PAID FOR THE QUANTITY ACTUALLY FURNISHED BASED AT THE UNIT PRICE BID FOR THE WORK.

ALL VERTICAL CLEARANCE SIGNAGE, IF EXISTING, SHALL BE RESTORED TO THE CONDITION EXISTING PRIOR TO THE START OF WORK ASSOCIATED WITH THIS CONTRACT.

THE CONTRACTOR SHALL BE REQUIRED TO PROVIDE ACCESS TO ABUTTING PROPERTY AT ALL TIMES DURING THE CONSTRUCTION OF THIS PROJECT.

DO NOT SCALE PLANS FOR CONSTRUCTION DIMENSIONS.

IT SHALL BE THE CONTRACTOR'S RESPONSIBILITY TO PROTECT AND PRESERVE THE EXISTING BRIDGE LIGHTING AT ANY LOCATIONS THAT LIGHTING IS ENCOUNTERED ADJACENT TO AN AREA TO BE CLEANED AND PAINTED.

GENERAL PAINT NOTES

CLEANING AND PAINTING OF THE EXISTING STRUCTURAL STEEL SHALL BE AS SPECIFIED IN THE SPECIAL PROVISION FOR "CLEANING AND PAINTING EXISTING STEEL STRUCTURES".

ALL BEAMS, BEARINGS AND OTHER STRUCTURAL STEEL SHALL BE CLEANED PER NEAR WHITE BLAST CLEANING - SSPC-SP10, THESE AREAS SHALL BE PAINTED ACCORDING TO THE REQUIREMENTS OF PAINT SYSTEM 1 -02/E/U, THE COLOR OF THE FINAL FINISH COAT FOR ALL INTERIOR STEEL SURFACES SHALL BE GRAY, MUNSELL NO 5B 7/1. THE COLOR OF THE FINAL FINISH COAT FOR THE EXTERIOR AND BOTTOM FLANGE OF THE FASCIA BEAMS SHALL BE REDDISH BROWN, MUNSELL NO 2.5YR 3/4.

ALL ITEMS (SUCH AS, BUT NOT LIMITED TO: CONDUITS, BRACKETS AND DECK DRAINS) ATTACHED TO OUTSIDE OF THE FASCIA BEAMS SHOULD BE CLEANED AND PAINTED

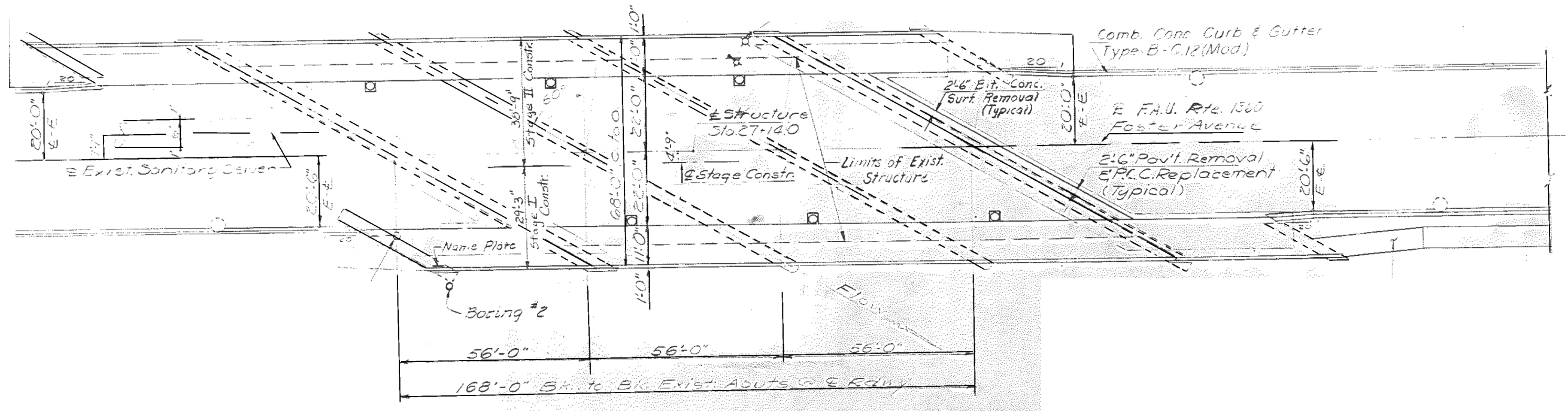
FILE NAME :	USER NAME : govengoutab	DESIGNED -	REVISED -	STATE OF ILLINOIS DEPARTMENT OF TRANSPORTATION	INDEX OF SHEETS, STATE STANDARDS AND GENERAL NOTES	F.A.U. RTE.	SECTION	COUNTY	TOTAL SHEETS	SHEET NO.	
p:\1\004EBIQINTEG\illinois.gov\PIDOT\Documents\DOT Offices\District 1\Projects\013301\BMD\State\Design\0133016-shr-plan.dgn	PLOT SCALE : 100.0000' / in.	CHECKED -	REVISED -			1360	2016-015BP	COOK	8	2	
Default	PLOT DATE : 7/1/2016	DATE -	REVISED -			SCALE: SHEET OF SHEETS STA. TO STA.		CONTRACT NO. 62C31			
						ILLINOIS FED. AID PROJECT					

SUMMARY OF QUANTITIES				CONSTRUCTION TYPE CODE 0014						SUMMARY OF QUANTITIES				CONSTRUCTION TYPE CODE					
CODE NO	ITEM	UNIT	TOTAL QUANTITIES	0014						CODE NO	ITEM	UNIT	TOTAL QUANTITIES						
67000400	ENGINEER'S FIELD OFFICE, TYPE A	CAL MO	6	6															
67100100	MOBILIZATION	LSUM	1	1															
70102625	TRAFFIC CONTROL AND PROTECTION, STANDARD 701606	LSUM	1	1															
70102640	TRAFFIC CONTROL AND PROTECTION, STANDARD 701801	LSUM	1	1															
Z0007114	CONTAINMENT AND DISPOSAL OF LEAD PAINT CLEANING RESIDUES ↑ NON-	LSUM	1	1															
Z0010501	CLEANING AND PAINTING STEEL BRIDGE NO. 1	LSUM	1	1															
Z0030850	TEMPORARY INFORMATION SIGNING	SO FT	51.4	51.4															

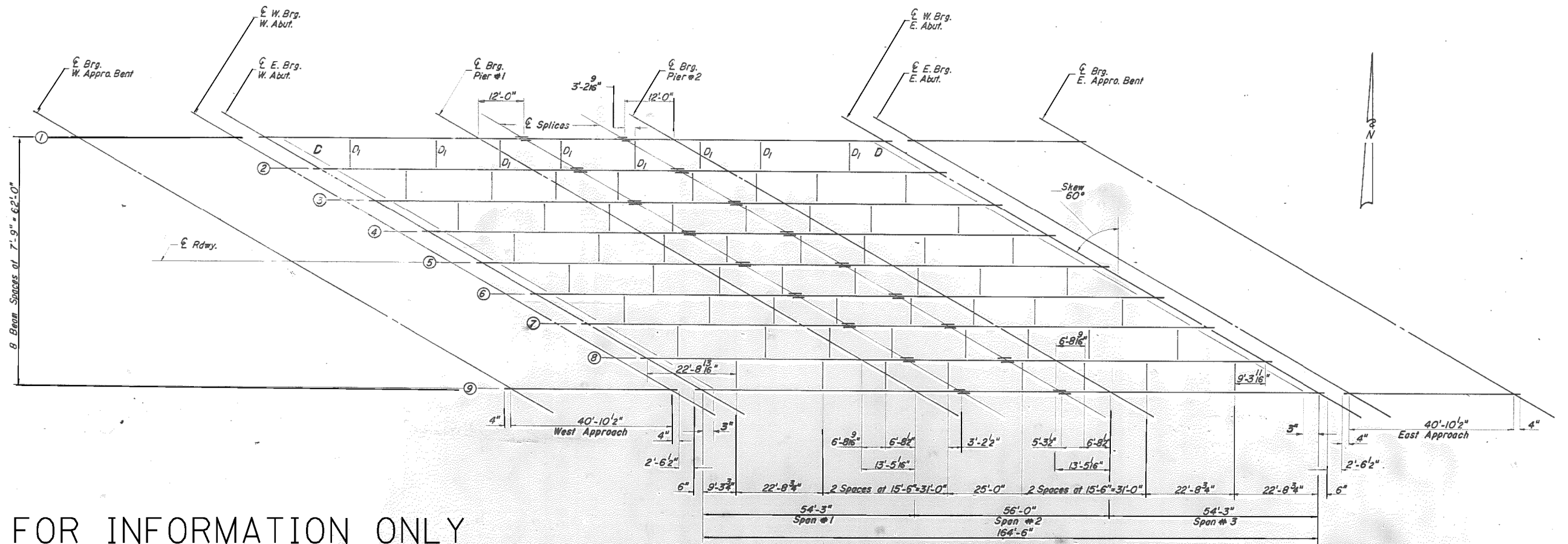
URBAN
100%
STATE

1

7

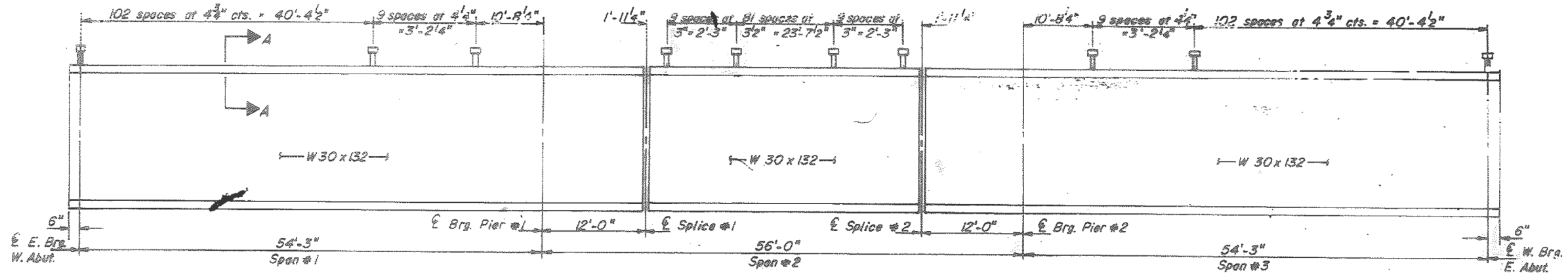


PLAN



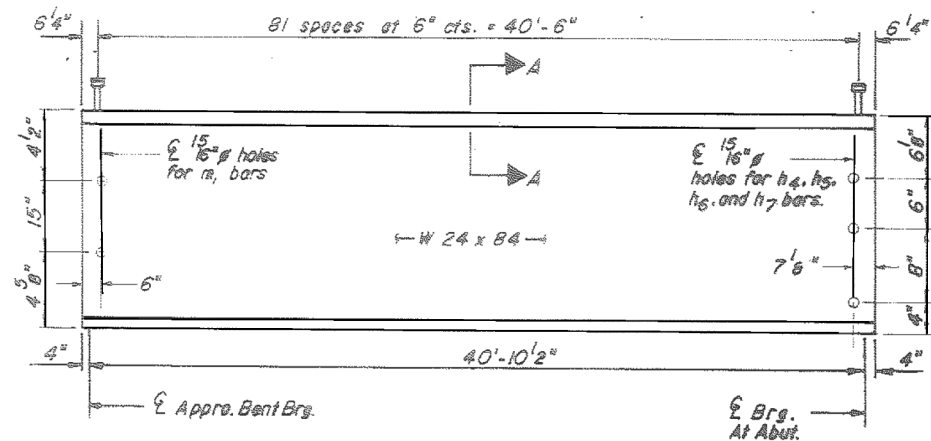
FOR INFORMATION ONLY

FILE NAME :	USER NAME : gorenautab	DESIGNED -	REVISED -	STATE OF ILLINOIS DEPARTMENT OF TRANSPORTATION	BRIDGE DETAILS			F.A.U. RTE.	SECTION	COUNTY	TOTAL SHEETS	SHEET NO.				
pw\ill084EBID\INTEG\illinois.gov\PWIDOT\Documents\IDOT Offices\District 1\Projects\DI33016\Bridges\Design\DI33016-sh1-plan.dgn	PLOT SCALE = 100.0000' / 1\"/>															
Default	PLOT DATE = 7/1/2016	CHECKED -	REVISED -		SCALE:	SHEET	OF	SHEETS	STA.	TO	STA.	1360	2016-015BP	COOK	8	4
		DATE -	REVISED -								CONTRACT NO. 62C31					

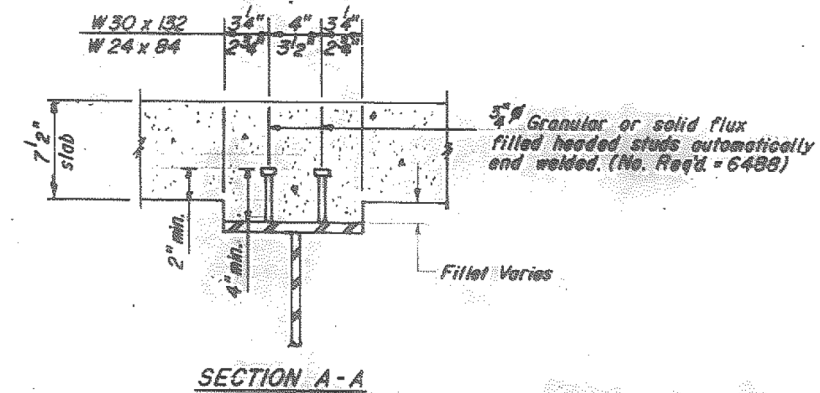


GIRDER ELEVATION
(Spans #1 thru #3)
(A.A.S.H.T.O. M-223)
Grade 50

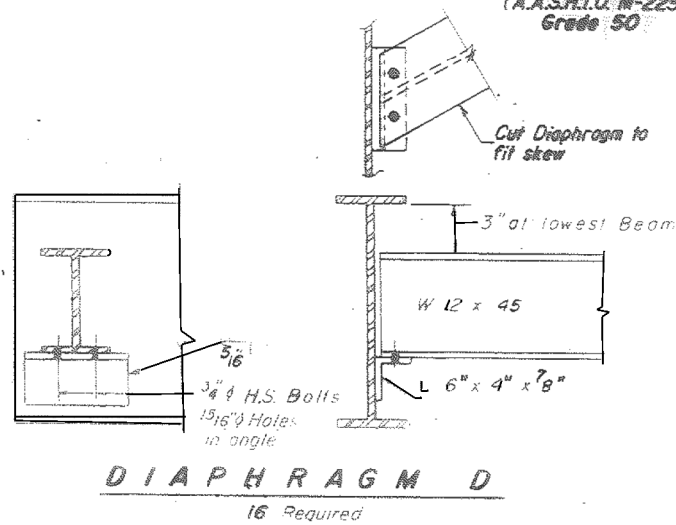
Note: All structural steel shall be A.A.S.H.T.O. M-163 except as noted.



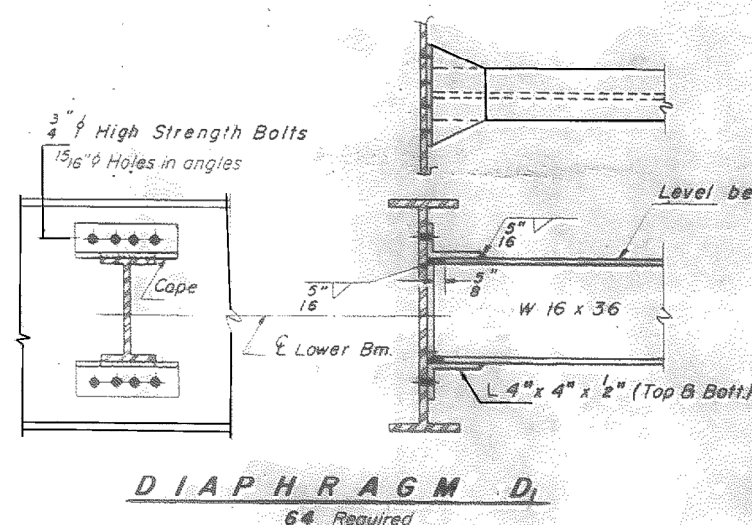
GIRDER ELEVATION
(Approach Beams)
(A.A.S.H.T.O. M-223)
Grade 50



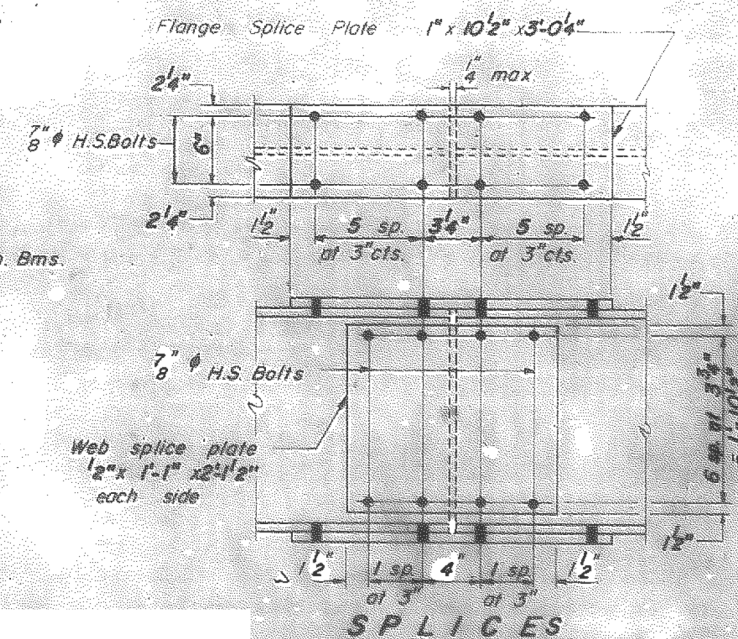
SECTION A-A



DIAPHRAGM D
16 Required



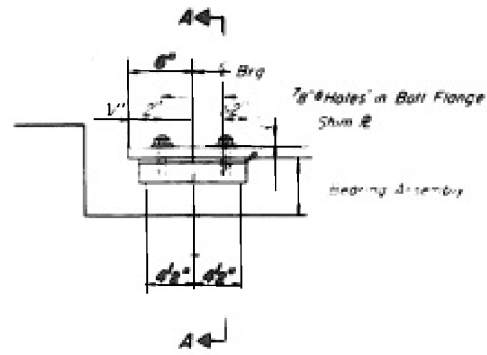
DIAPHRAGM D1
64 Required



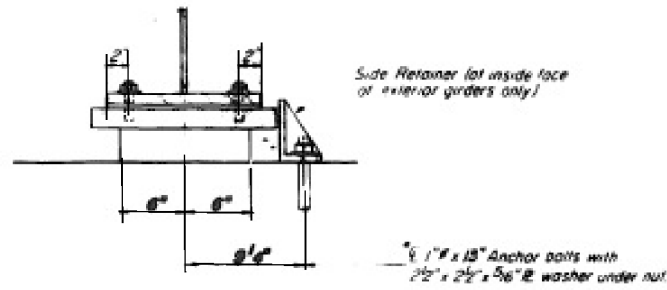
SPLICES
Splice E's A.A.S.H.T.O. M-223 steel Grade 50

FOR INFORMATION ONLY

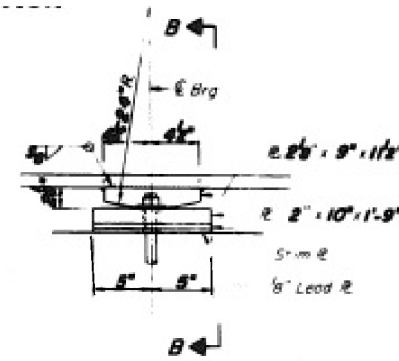
FILE NAME =	USER NAME = gorenautob	DESIGNED -	REVISED -	STATE OF ILLINOIS DEPARTMENT OF TRANSPORTATION	BRIDGE DETAILS	F.A.U. R.T.E.	SECTION	COUNTY	TOTAL SHEETS	SHEET NO.	
pw\ill084EBID\INTEG\illinois.gov\PWIDOT\Documents\DOT Offices\District 1\Projects\DI33016\Design\DI33016-sh1-plan.dgn		REVISIONS				1360	2016-015BP	COOK	8	5	
Default	PLOT SCALE = 100.0000' / 1in.	CHECKED -	REVISED -			CONTRACT NO. 62C31					
	PLOT DATE = 7/1/2016	DATE -	REVISED -			ILLINOIS FED. AID PROJECT					



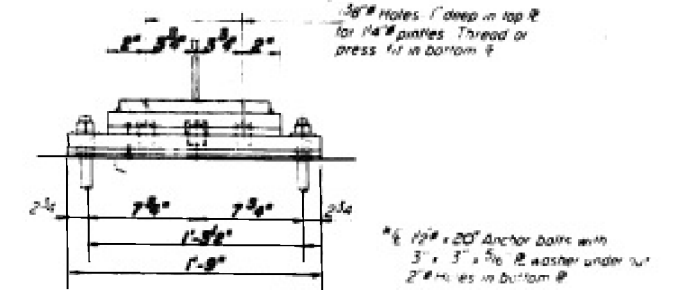
SECTION AT ABUTS.



SECTION A-A



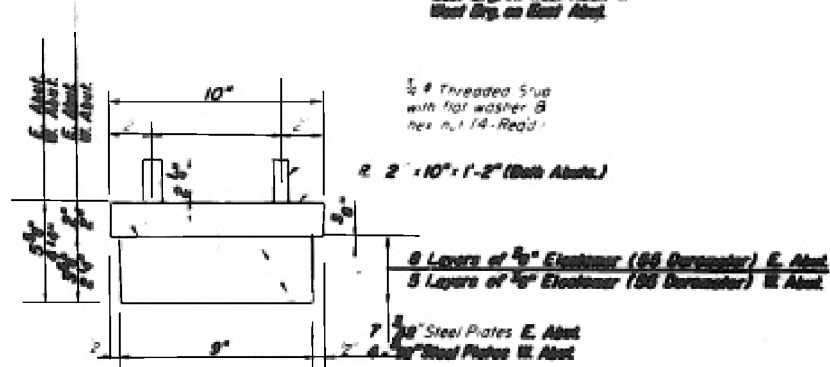
ELEVATION AT PIER



SECTION B-B

TYPE I ELASTOMERIC EXP. BRG.

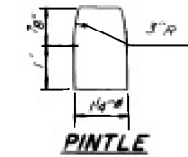
East Brg. on West Abut. &
West Brg. on East Abut.



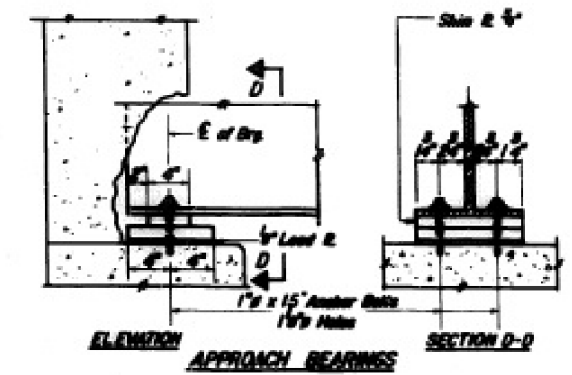
BEARING ASSEMBLY AT ABUTMENTS

Note: Shim plates shall not be placed under bearing assembly.

Note: After girders have been erected holes at expansion bearings shall be drilled and anchor bolts grouted in place. Anchor bolts at fixed bearings may be built into the masonry. See SH. #20 for drilled anchor bolt details.

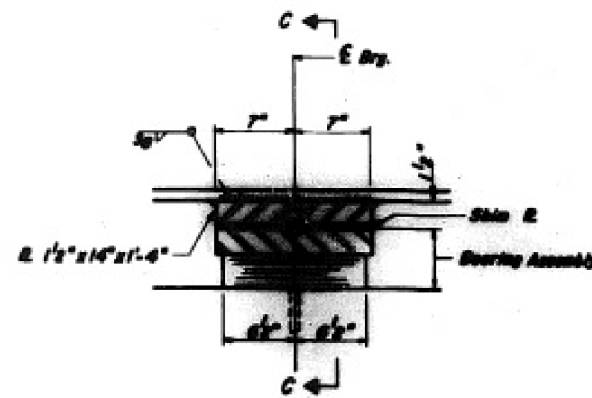


PINTLE

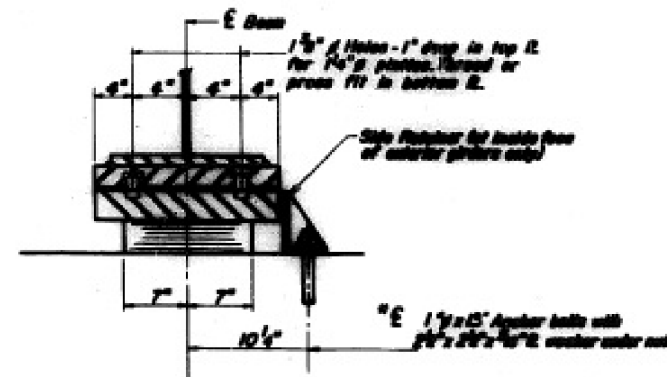


ELEVATION APPROACH BEARINGS

SECTION D-D

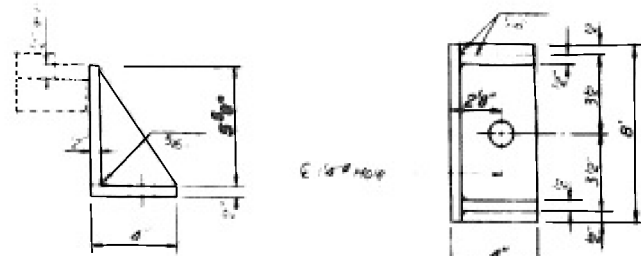


SECTION AT PIER

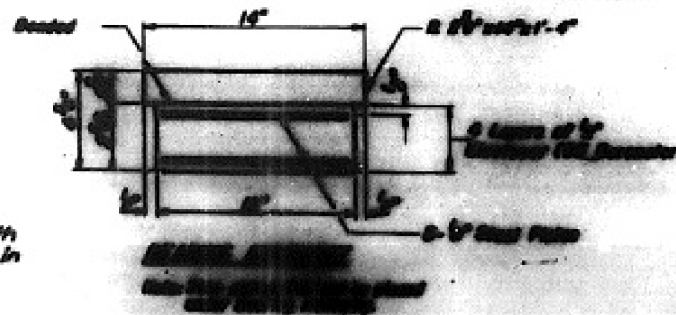
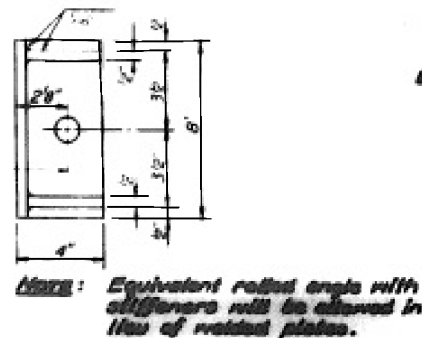


SECTION C-C

TYPE I ELASTOMERIC EXP. BRG. AT PIER

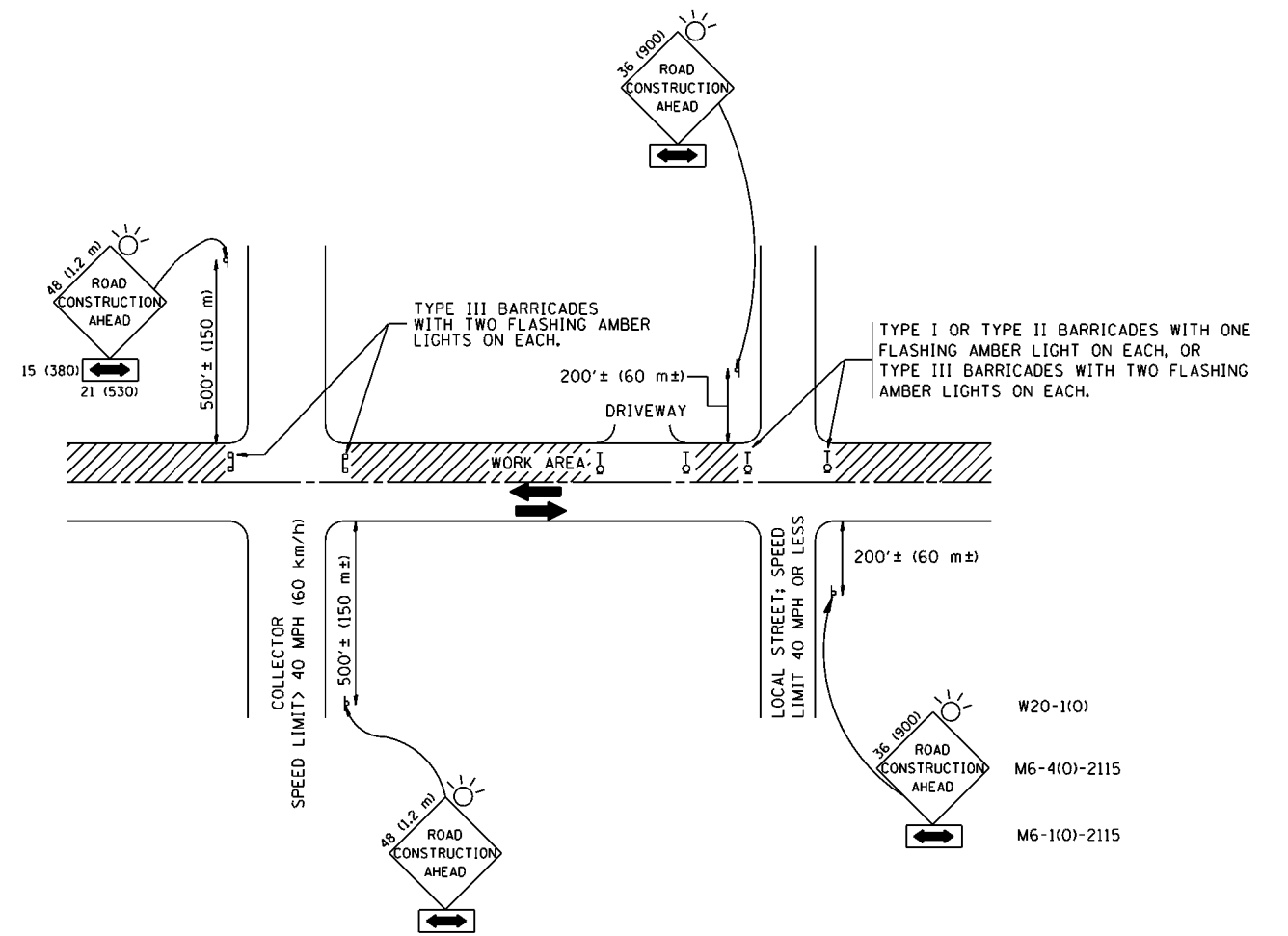


SIDE RETAINER (B Req'd)



FOR INFORMATION ONLY

FILE NAME :	USER NAME : gorenoutab	DESIGNED -	REVISED -	STATE OF ILLINOIS DEPARTMENT OF TRANSPORTATION	BRIDGE DETAILS	F.A.U. RTE.	SECTION	COUNTY	TOTAL SHEETS	SHEET NO.	
Default	PLOT SCALE = 100.0000' / 1"	CHECKED -	REVISED -			1360	2016-015BP	COOK	8	6	
	PLOT DATE = 7/1/2016	DATE -	REVISED -			CONTRACT NO. 62C31					
						ILLINOIS FED. AID PROJECT					



TRAFFIC CONTROL AND PROTECTION FOR SIDE ROADS, INTERSECTIONS, AND DRIVEWAYS

NOTES:

A. FOR NO LANE RESTRICTION ON THE SIDE ROAD OR DRIVEWAYS

1. SIDE ROAD WITH A SPEED LIMIT OF 40 MPH (60 km/h) OR LESS AS SHOWN ON THE DRAWING AND AS DIRECTED BY THE ENGINEER:

a) ONE ROAD CONSTRUCTION AHEAD SIGN 36 x 36 (900x900) WITH A FLASHER AND FLAG MOUNTED ON IT APPROXIMATELY 200' (60 m) IN ADVANCE OF THE MAIN ROUTE.

b) THE CLOSED PORTION OF THE MAIN ROUTE SHALL BE PROTECTED BY BLOCKING WITH TYPE I, TYPE II OR TYPE III BARRICADES, 1/3 OF THE CROSS SECTION OF THE CLOSED PORTION.

2. SIDE ROAD WITH A SPEED LIMIT GREATER THAN 40 MPH (60 km/h) AS SHOWN ON THE DRAWING AND AS DIRECTED BY THE ENGINEER:

a) ONE ROAD CONSTRUCTION AHEAD SIGN 48 x 48 (1.2 m x 1.2 m) WITH A FLASHER MOUNTED ON IT APPROXIMATELY 500' (150 m) IN ADVANCE OF THE MAIN ROUTE.

b) THE CLOSED PORTION OF THE MAIN ROUTE SHALL BE PROTECTED BY BLOCKING WITH TYPE III BARRICADES, 1/2 OF THE CROSS SECTION OF THE CLOSED PORTION.

3. WHEN THE SIDE ROAD LIES BETWEEN THE BEGINNING OF THE MAINLINE SIGNING AND THE WORK ZONE, A SINGLE HEADED ARROW (M6-1) SHALL BE USED IN LIEU OF THE DOUBLE HEADED ARROW (M6-4).

B. FOR A LANE CLOSURE ON A SIDE ROAD OR DRIVEWAY:

USE APPLICABLE PORTIONS OF THE TYPICAL APPLICATION OF TRAFFIC CONTROL DEVICES (STD. 701501, STD. 701606 OR THE APPROPRIATE STANDARD). THE SPACING OF SIGNS AND BARRICADES SHALL BE ADJUSTED FOR FIELD CONDITIONS AS DIRECTED BY THE ENGINEER. THE DIRECTIONAL ARROW SHALL BE COVERED OR REMOVED WHEN NO LONGER CONSISTENT WITH THE SIDE ROAD LANE CLOSURE.

C. ADVANCE WARNING SIGNS ARE TO BE OMITTED ON DRIVEWAY UNLESS OTHERWISE NOTED.

D. THE TRAFFIC CONTROL AND PROTECTION FOR SIDE ROADS, INTERSECTIONS, AND DRIVEWAYS SHALL BE INCIDENTAL TO THE COST OF SPECIFIED TRAFFIC CONTROL STANDARDS OR ITEMS.

All dimensions are in millimeters (inches) unless otherwise shown.

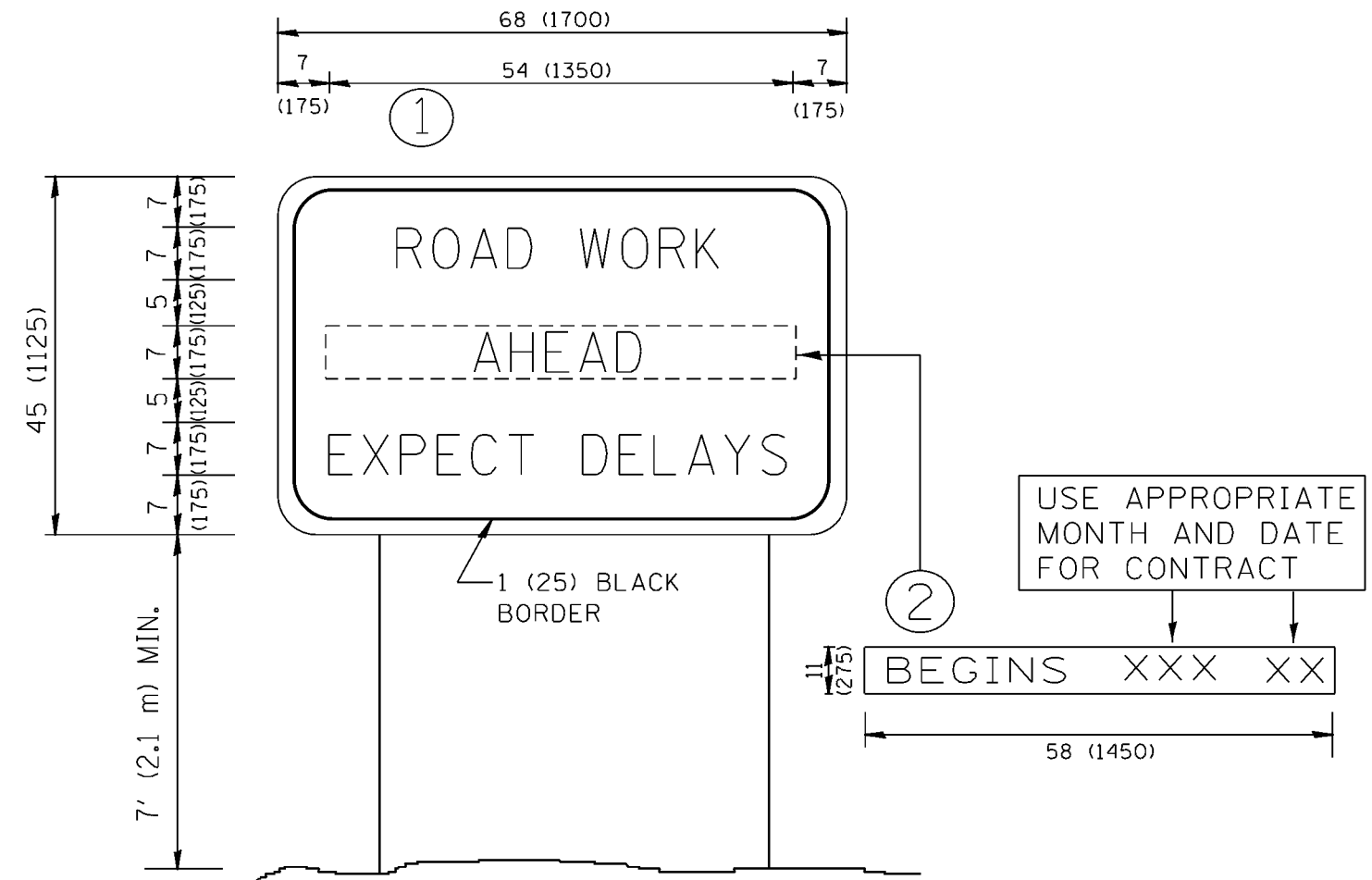
FILE NAME =	USER NAME = gorengeautab	DESIGNED - LHA	REVISED - J. OBERLE 10-18-95
p:\11\084EBID\INTEG\illinois.gov\FWIDOT\Documents\IDOT Offices\District 1\Projects\1330\RD\Meta\Design\DistStd.dgn			REVISED - A. HOUSEH 03-06-96
		CHECKED -	REVISED - A. HOUSEH 10-15-96
		DATE - 06-89	REVISED - T. RAMMACHER 01-06-00

STATE OF ILLINOIS
DEPARTMENT OF TRANSPORTATION

TRAFFIC CONTROL AND PROTECTION FOR
SIDE ROADS, INTERSECTIONS, AND DRIVEWAYS

SCALE: NONE SHEET NO. 1 OF 1 SHEETS STA. TO STA.

F.A.U. RTÉ.	SECTION	COUNTY	TOTAL SHEETS	SHEET NO.
1360	2016-015BP	COOK	8	7
TC-10			CONTRACT NO. 62C31	
FED. ROAD DIST. NO. 1 ILLINOIS FED. AID PROJECT				



NOTES:

1. USE BLACK LETTERING ON ORANGE BACKGROUND.
2. ERECT SIGNS IN ADVANCE OF THE LOCATION FOR THE "ROAD CONSTRUCTION AHEAD" SIGN AT LOCATIONS AS DIRECTED BY THE ENGINEER.
3. ERECT SIGN ① WITH INSTALLED PANEL ② ONE WEEK PRIOR TO THE START OF CONSTRUCTION.
4. REMOVE PANEL ② SOON AFTER THE START OF CONSTRUCTION.
5. SEE SPECIAL PROVISION FOR "TEMPORARY INFORMATION SIGNING" FOR ADDITIONAL INFORMATION.
6. ONE SIGN ASSEMBLY EQUALS 25.70 SQ. FT. (2.3 SQ. M.)
7. SHALL BE PAID FOR AS TEMPORARY INFORMATION SIGNING.

ALL DIMENSIONS ARE IN INCHES (MILLIMETERS) UNLESS OTHERWISE SHOWN.

FILE NAME =	USER NAME = gorengeautab	DESIGNED -	REVISED - R. MIRS 09-15-97	STATE OF ILLINOIS DEPARTMENT OF TRANSPORTATION	ARTERIAL ROAD INFORMATION SIGN	F.A.U. RTE.	SECTION	COUNTY	TOTAL SHEETS	SHEET NO.
pw\ill084EBID\INTEG\illinois.gov\PWIDOT\Documents\IDOT Offices\District 1\Projects\1330\Road\Info\Design\DistStd.dgn		REVISED - R. MIRS 12-11-97	1360			2016-015BP	COOK	8	8	
PLOT SCALE = 100.0000' / 1in.	CHECKED -	REVISED - T. RAMMACHER 02-02-99	TC-22			CONTRACT NO. 62C31				
PLOT DATE = 7/1/2016	DATE -	REVISED - C. JUCIUS 01-31-07	SCALE: NONE			SHEET NO. 1 OF 1 SHEETS	STA.	TO STA.	FED. ROAD DIST. NO. 1 ILLINOIS FED. AID PROJECT	