

STATE OF ILLINOIS
DEPARTMENT OF TRANSPORTATION

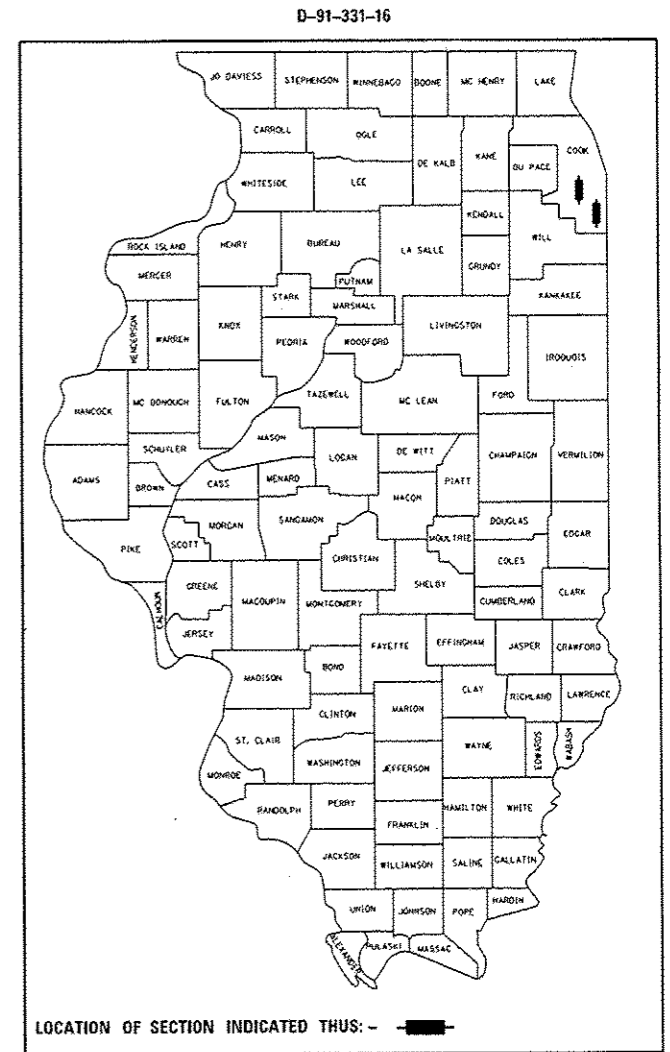
F.A.P. RTE.	SECTION	COUNTY	TOTAL SHEETS	SHEET NO.
VAR.	2016-013BP	COOK	10	1
		ILLINOIS	CONTRACT NO. 62C32	

FOR INDEX OF SHEETS, SEE SHEET NO. 2

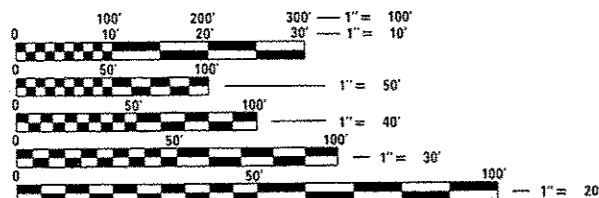
PROJECT IS LOCATED IN THE VILLAGES OF BEDFORD PARK, GLENWOOD AND HOMEWOOD.

**PROPOSED
HIGHWAY PLANS**
VARIOUS ROUTES
(1) F.A.P. ROUTE 348: IL 43 (HARLEM AVE.)
OVER BRC RR
(2) F.A.P. ROUTE 876: IL 1 (HALSTED ST.)
OVER BUTTERFIELD CREEK
SECTION: 2016-013BP
BRIDGE PAINTING
COOK COUNTY

C-91-331-16



SEE LOCATION MAPS
SHEET 4



FULL SIZE PLANS HAVE BEEN PREPARED USING STANDARD ENGINEERING SCALES. REDUCED SIZED PLANS WILL NOT CONFORM TO STANDARD SCALES. IN MAKING MEASUREMENTS ON REDUCED PLANS, THE ABOVE SCALES MAY BE USED.

J.U.L.I.E.
JOINT UTILITY LOCATION INFORMATION FOR EXCAVATION
1-800-892-0123
OR 811

PROJECT ENGINEER J. ALAIN MIDY (847) 221-3056
PROJECT MANAGER ISSAM RAYYAN (847) 705-4178

CONTRACT NO. 62C32

STATE OF ILLINOIS
DEPARTMENT OF TRANSPORTATION

SUBMITTED June 29, 2016

John F. ...
REGIONAL ENGINEER

August 12, 2016
Margaret M. Addis, P.E.
ENGINEER OF DESIGN AND ENVIRONMENT

August 12, 2016
...
DIRECTOR OF PROGRAM DEVELOPMENT

PRINTED BY THE AUTHORITY
OF THE STATE OF ILLINOIS

INDEX OF SHEETS

1. TITLE SHEET
2. INDEX OF SHEETS, STATE STANDARDS, GENERAL NOTES AND GENERAL PAINT NOTES
3. SUMMARY OF QUANTITIES
4. LOCATION MAPS
- 5-7. EXISTING BRIDGE PLANS (SN 016-2526)
- 8-9. EXISTING BRIDGE PLANS (SN 016-2409)
10. ARTERIAL ROAD INFORMATION SIGN (TC-22)

STATE STANDARDS

STANDARD NO.	DESCRIPTION
701601-09	URBAN LANE CLOSURE, MULTILANE, 1W OR 2W WITH NONTRAVERSABLE MEDIAN
701801-06	SIDEWALK, CORNER OR CROSSWALK CLOSURE
701901-05	TRAFFIC CONTROL DEVICES

GENERAL NOTES

BEFORE STARTING ANY EXCAVATION, THE CONTRACTOR SHALL CALL "J.U.L.I.E." AT (800) 892-0123 OR 811 FOR FIELD LOCATIONS OF BURIED ELECTRIC, TELEPHONE AND GAS UTILITIES. 48 HOUR NOTIFICATION IS REQUIRED.

THE CONTRACTOR SHALL COORDINATE CONSTRUCTION ACTIVITIES WITH UTILITY COMPANIES, AND THE VILLAGES OF BEDFORD PARK, GLENWOOD AND HOMEWOOD.

PLAN DIMENSIONS AND DETAILS RELATIVE TO EXISTING PLANS ARE SUBJECT TO NOMINAL CONSTRUCTION VARIATIONS. THE CONTRACTOR SHALL FIELD VERIFY EXISTING DIMENSIONS AND DETAILS AFFECTING NEW CONSTRUCTION AND MAKE NECESSARY APPROVED ADJUSTMENTS PRIOR TO CONSTRUCTION OR ORDERING OF MATERIALS. SUCH VARIATIONS SHALL NOT BE CAUSE FOR ADDITIONAL COMPENSATION FOR A CHANGE IN SCOPE OF THE WORK, HOWEVER, THE CONTRACTOR WILL BE PAID FOR THE QUANTITY ACTUALLY FURNISHED BASED AT THE UNIT PRICE BID FOR THE WORK.

THE CONTRACTOR WILL NOT BE ALLOWED TO SET UP A YARD OR FIELD OFFICE ON STATE PROPERTY WITHOUT WRITTEN PERMISSION FROM THE DEPARTMENT.

THE CONTRACTOR SHALL CONTACT THE DISTRICT ONE TRAFFIC CONTROL SUPERVISOR AT (847) 705-4470 A MINIMUM OF 72 HOURS IN ADVANCE OF BEGINNING WORK.

THE CONTRACTOR SHALL BE REQUIRED TO PROVIDE ACCESS TO ABUTTING PROPERTY AT ALL TIMES DURING THE CONSTRUCTION OF THIS PROJECT.

DO NOT SCALE PLANS FOR CONSTRUCTION DIMENSIONS.

THE CONTRACTOR IS NOT ALLOWED TO HAVE A LANE CLOSURE OVERNIGHT FOR THE PURPOSE OF STAGING EQUIPMENT.

THE CONTRACTOR SHALL OBTAIN COAST GUARD APPROVAL TO OCCUPY NAVIGABLE WATERS, IF REQUIRED, FOR THE PROPOSED WORK. A WORK PLAN SHALL BE PREPARED BY THE CONTRACTOR, REVIEWED AND APPROVED BY THE ENGINEER AND BE SUBMITTED BY THE ENGINEER TO THE COAST GUARD AT THE ADDRESS LISTED BELOW FOR APPROVAL.

BRIDGE ADMINISTRATOR
US COAST GUARD
EIGHTH COAST GUARD DISTRICT
1222 SPRUCE ST.
ST. LOUIS, MO 63103-2832

GENERAL PAINT NOTES

SN 016-2526

CLEANING AND PAINTING OF THE EXISTING STRUCTURAL STEEL SHALL BE AS SPECIFIED IN THE SPECIAL PROVISION FOR "CLEANING AND PAINTING EXISTING STEEL STRUCTURES".

THE AREAS DESIGNATED SHALL BE CLEANED PER NEAR WHITE BLAST CLEANING - SSPC-SP10. THE AREAS DESIGNATED SHALL BE PAINTED ACORDING TO THE REQUIREMENTS OF PAINT SYSTEM 1 -OZ/E/U. THE COLOR OF THE FINAL FINISH COAT FOR ALL INTERIOR STEEL SURFACES SHALL BE GRAY, MUNSELL NO 5B 7/1. THE COLOR OF THE FINAL FINISH COAT FOR THE EXTERIOR AND BOTTOM FLANGE OF THE FASCIA BEAMS SHALL BE REDDISH BROWN, MUNSELL NO 2.5YR 3/4.

ALL ITEMS (SUCH AS, BUT NOT LIMITED TO: CONDUITS, BRACKETS AND DECK DRAINS) ATTACHED TO OUTSIDE OF THE FASCIA BEAMS SHOULD BE CLEANED AND PAINTED

A MINIMUM OF ONE (1) AIR MONITOR WILL BE REQUIRED TO MONITOR ABRASIVE BLASTING OPERATIONS. SEE SPECIAL PROVISIONS FOR "CONTAINMENT AND DISPOSAL OF LEAD PAINT CLEANING RESIDUES."

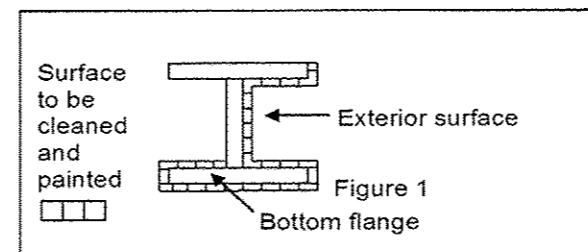
ALL BEAMS, BEARINGS AND OTHER STRUCTURAL STEEL WITHIN EIGHT (8) FT., (MEASURED ALONG THE BEAM) OF EITHER SIDE OF ALL DECK JOINTS, SHALL BE CLEANED PER NEAR WHITE BLAST CLEANING SSPC-SP10. THE EXTERIOR SURFACES AND TOP AND BOTTOM OF THE BOTTOM FLANGE OF THE FASCIA BEAMS (SEE FIGURE 1) SHALL BE CLEANED PER NEAR WHITE BLAST CLEANING SSPC-SP10.

SN 016-2409

CLEANING AND PAINTING OF THE EXISTING STRUCTURAL STEEL SHALL BE AS SPECIFIED IN THE SPECIAL PROVISION FOR "CLEANING AND PAINTING EXISTING STEEL STRUCTURES".

ALL HANDRAIL SHALL BE CLEANED PER NEAR WHITE BLAST CLEANING - SSPC-SP10. THE HANDRAIL SHALL BE PAINTED ACORDING TO THE REQUIREMENTS OF PAINT SYSTEM 1 -OZ/E/U. THE COLOR OF THE FINAL FINISH COAT FOR THE HANDRAIL SHALL BE INTERSTATE GREEN, MUNSELL NO 7.5G 4/8.

A MINIMUM OF ONE (1) AIR MONITOR WILL BE REQUIRED TO MONITOR ABRASIVE BLASTING OPERATIONS. SEE SPECIAL PROVISIONS FOR "CONTAINMENT AND DISPOSAL OF LEAD PAINT CLEANING RESIDUES."



FASCIA BEAM PAINTING DETAIL

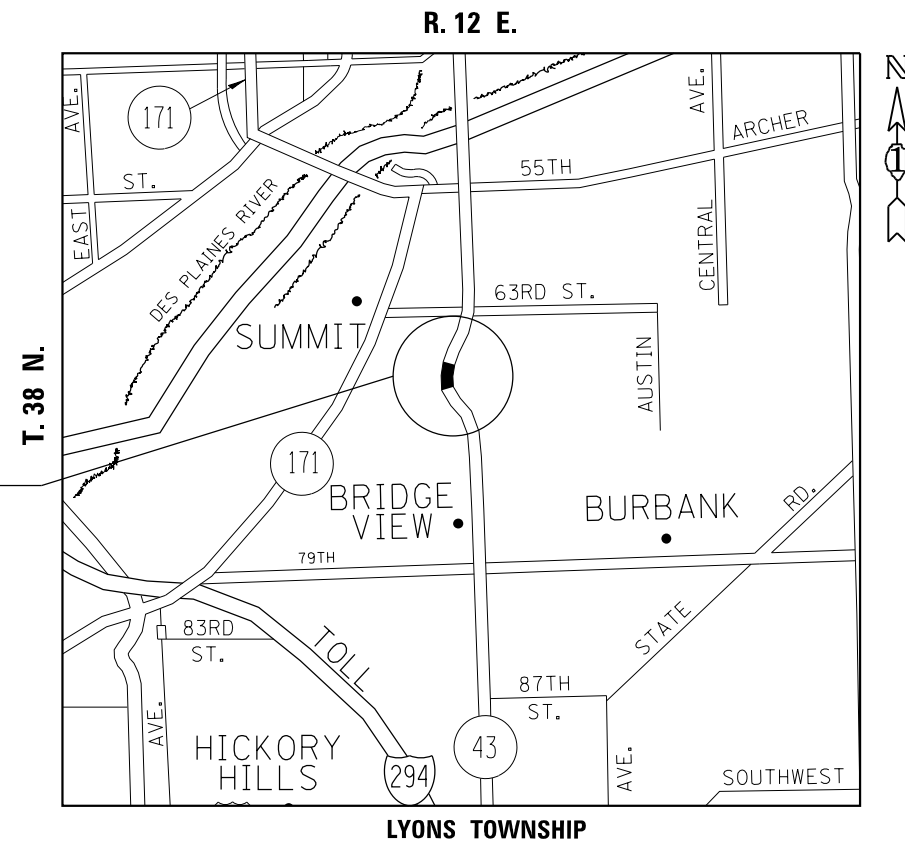
FIGURE 1

STATE OF ILLINOIS
DEPARTMENT OF TRANSPORTATION

INDEX OF SHEETS, STATE STANDARDS,
GENERAL NOTES AND GENERAL PAINT NOTES

FILE NAME	USER NAME	DESIGNED	REVISED	F.A.P. RTE.	SECTION	COUNTY	TOTAL SHEETS	SHEET NO.
pa:\N1804E81D\INTEG.11\inois.gov\PK100T\Documents\DOT Offices\District 1\Projects\DI3316\Drawings\Design\DI3316-akt-pl-an.dgn	pyrzanowski	-	-	VAR.	2016-013BP	COOK	10	2
Default	PLDT SCALE = 100.0000 / in.	CHECKED -	REVISED -	SCALE: SHEET OF SHEETS STA. TO STA.		CONTRACT NO. 62C32		
	PLDT DATE = 7/6/2016	DATE -	REVISED -			ILLINOIS FED. AID PROJECT		

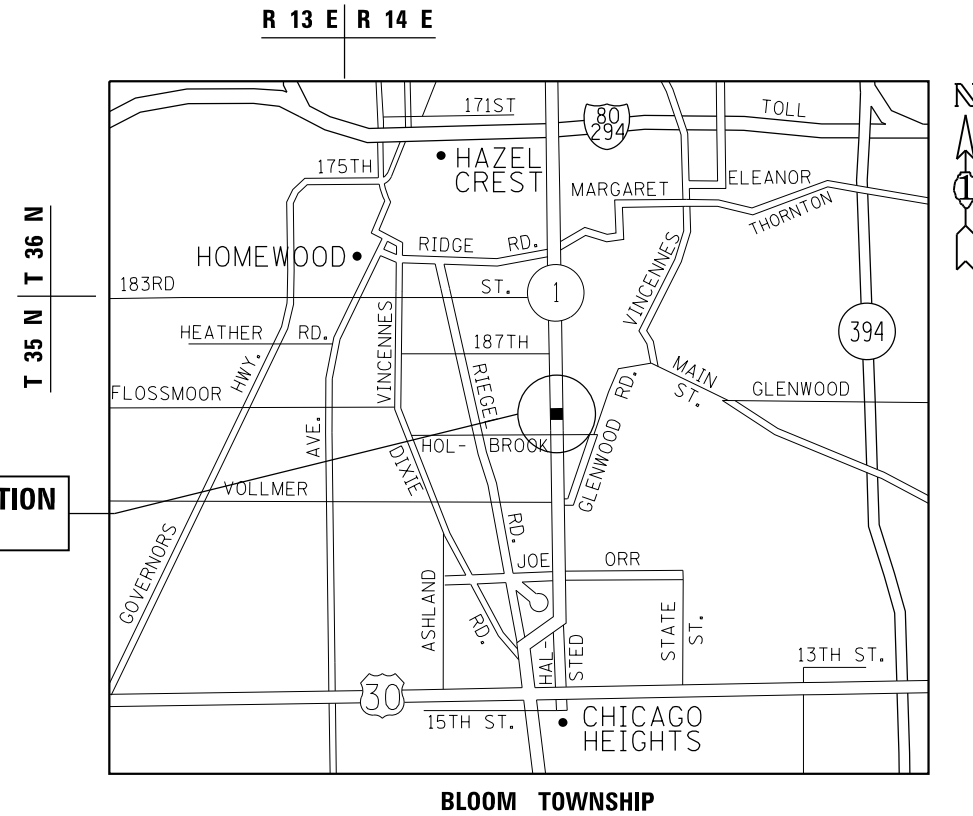
**IMPROVEMENT LOCATION
SN 016-2526**



IL 43 (HARLEM AVE.) TRAFFIC DATA

2015 ADT = 40,000
POSTED SPEED LIMIT = 40 MPH

**IMPROVEMENT LOCATION
SN 016-2409**



IL 1 (HALSTED ST.) TRAFFIC DATA

2013 ADT = 23,500
POSTED SPEED LIMIT = 45 MPH

FILE NAME =	USER NAME = pyrzenowskirb	DESIGNED -	REVISED -
p:\IL\084EBID\INTEG\illinois.gov\PIWIDOT\Documents\IDOT Offices\District 1\Projects\DI3316\Drawings\Design\DI3316-shr-plan.dgn		CHECKED -	REVISED -
Default	PLOT DATE = 6/14/2016	DATE -	REVISED -

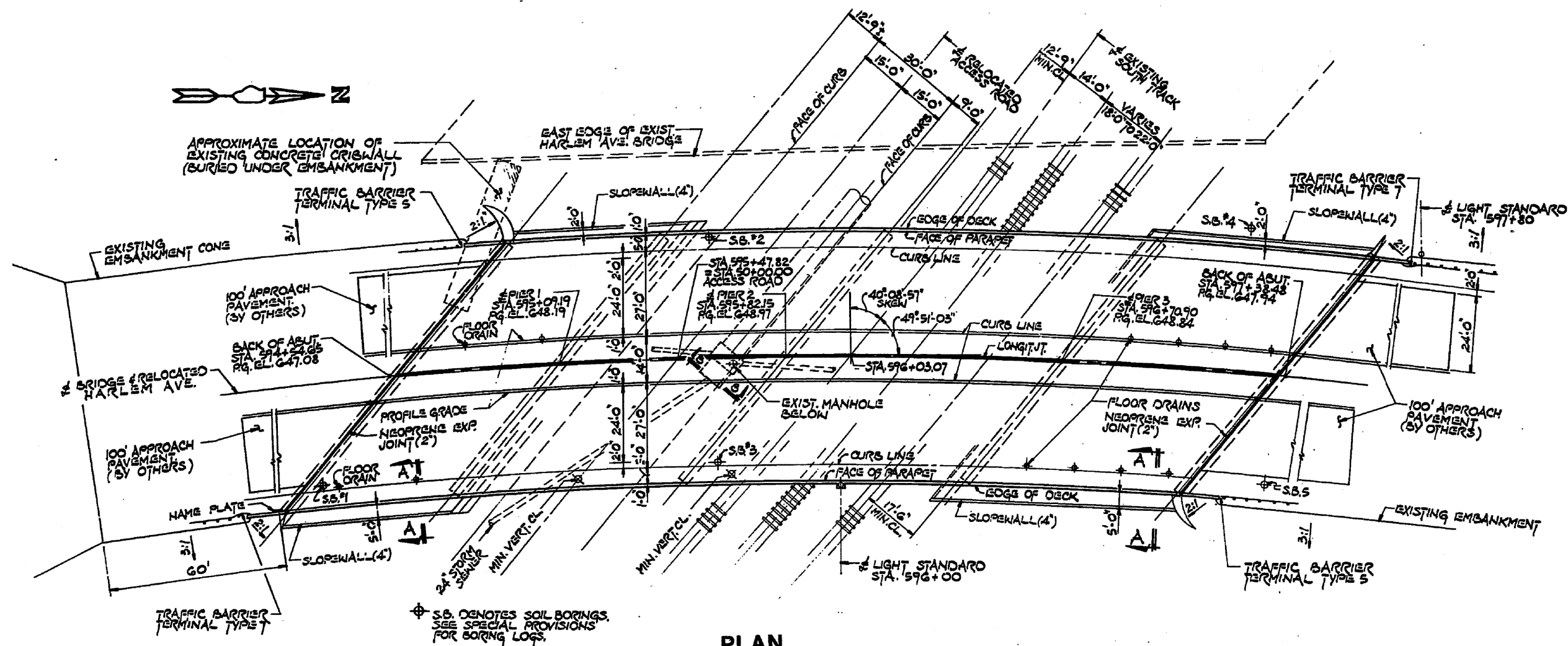
**STATE OF ILLINOIS
DEPARTMENT OF TRANSPORTATION**

LOCATION MAPS

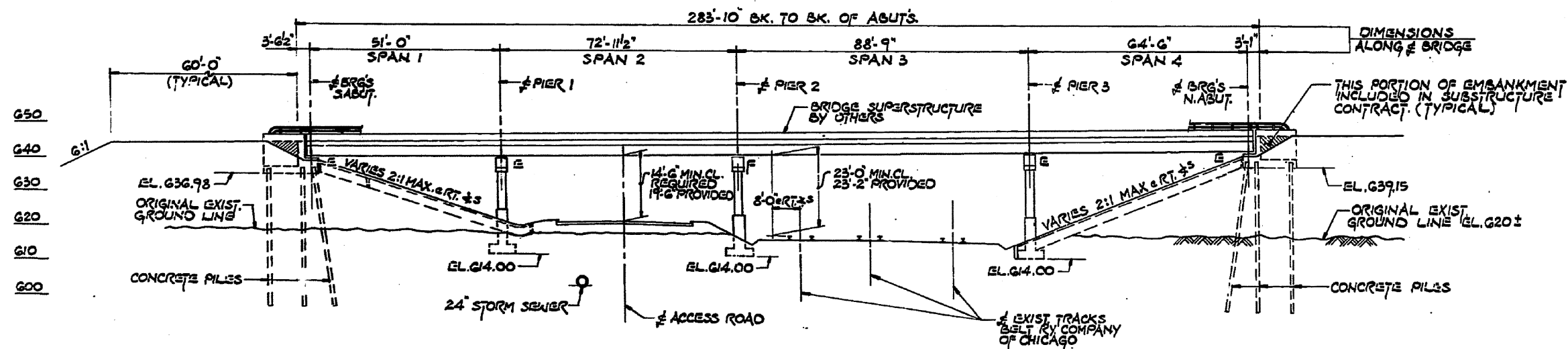
SCALE: SHEET OF SHEETS STA. TO STA.

F.A.P. RTE.	SECTION	COUNTY	TOTAL SHEETS	SHEET NO.
VAR.	2016-013BP	COOK	10	4
CONTRACT NO. 62C32				
ILLINOIS FED. AID PROJECT				

FOR INFORMATION ONLY



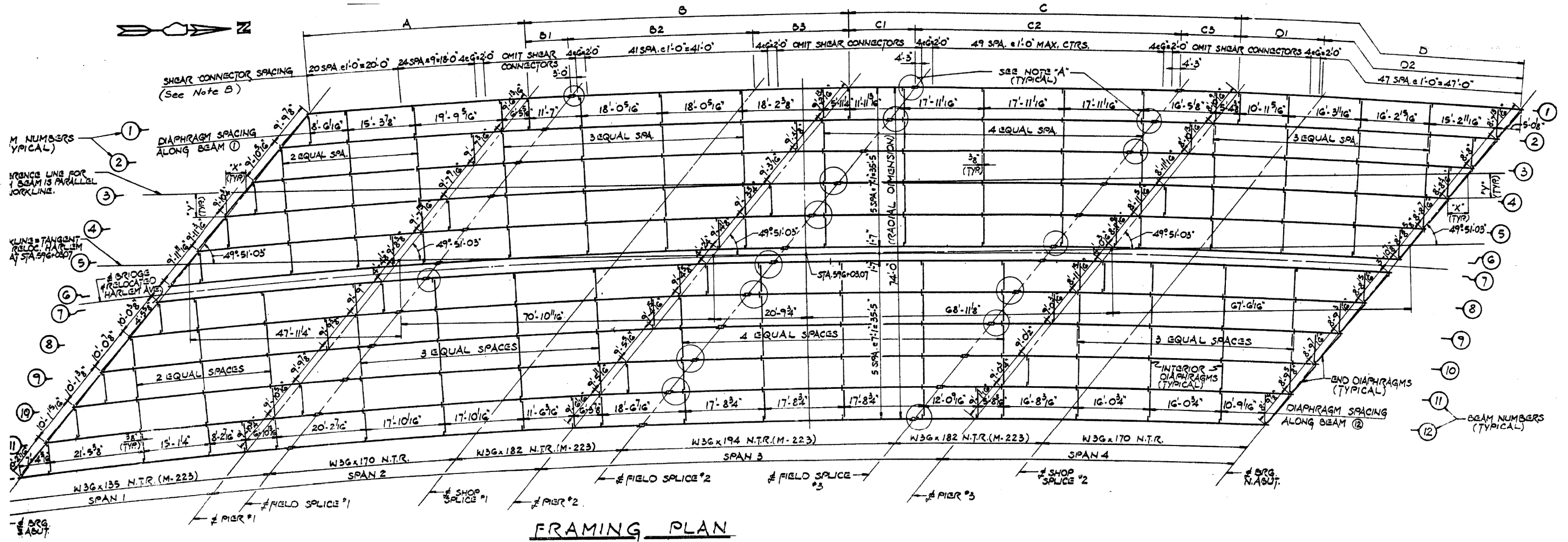
PLAN



ELEVATION

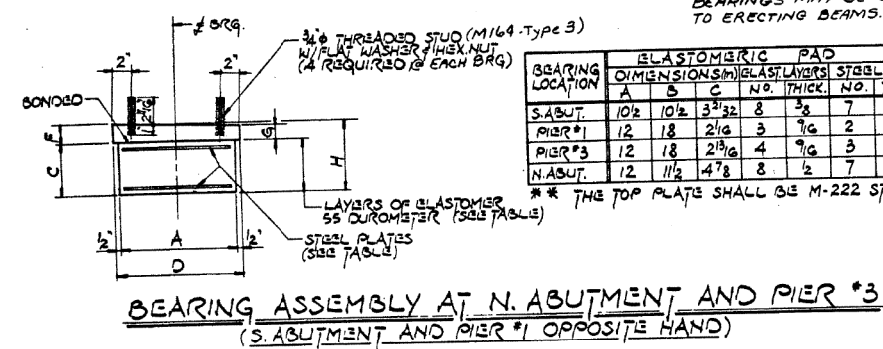
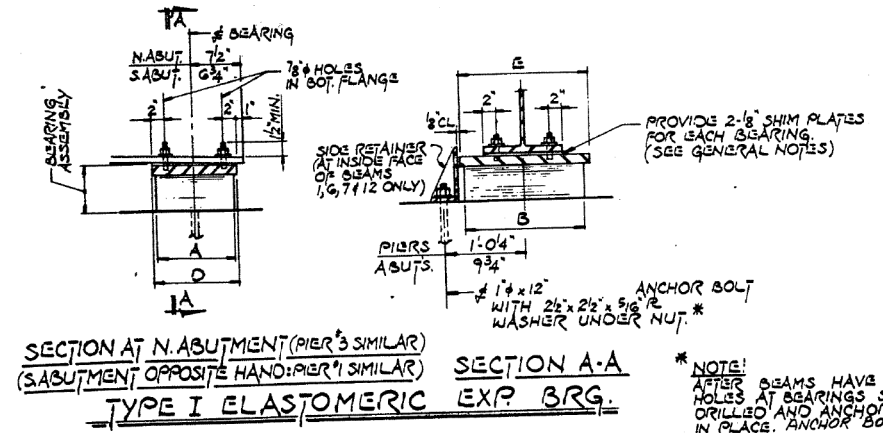
FILE NAME =	USER NAME = pyzranowski	DESIGNED -	REVISED -	STATE OF ILLINOIS DEPARTMENT OF TRANSPORTATION	SN 016-2526 IL 43 (HARLEM AVE.) OVER BRC RR	F.A.P. R.E.	SECTION	COUNTY	TOTAL SHEETS	SHEET NO.	
pw\11084EBID\INTEG\111nois.gov\PIWID\Documents\DOT Offices\District 1\Projects\013311\Drawings\Design\0133116-sht-plan.dgn		CHECKED -	REVISED -			VAR.	2016-013BP	COOK	10	5	
PLOT SCALE = 100.0000' / 1"		DATE -	REVISED -			CONTRACT NO. 62C32					
Default						ILLINOIS FED. AID PROJECT					

FOR INFORMATION ONLY



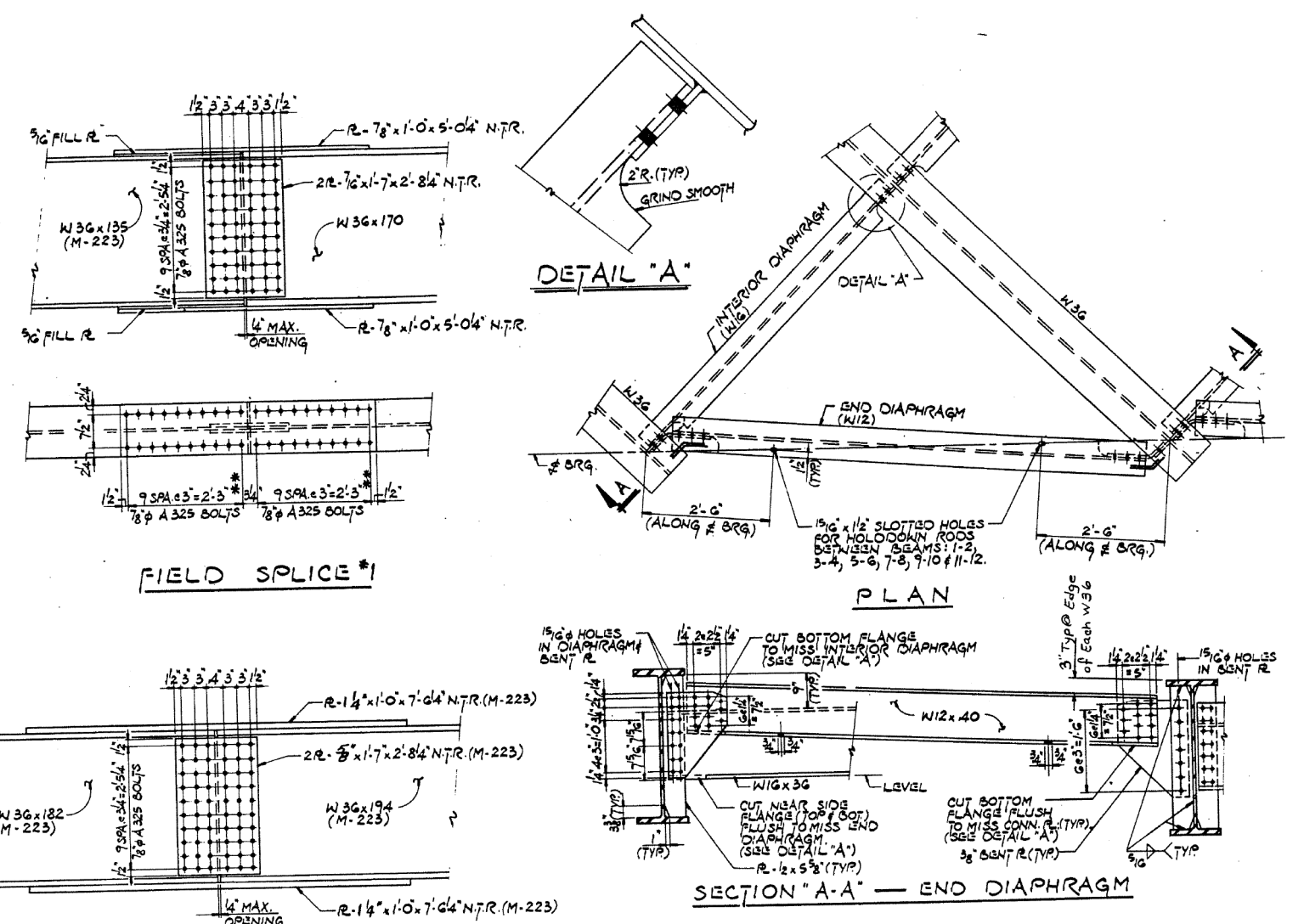
FILE NAME =	USER NAME = pyrzanowski	DESIGNED -	REVISED -	STATE OF ILLINOIS DEPARTMENT OF TRANSPORTATION	SN 016-2526 IL 43 (HARLEM AVE.) OVER BRC RR	F.A.P. RTE.	SECTION	COUNTY	TOTAL SHEETS	SHEET NO.	
pw\11084EBIDINTEG\illinois.gov\PI\DOT\Documents\DOT Offices\District 1\Projects\DI3316\Drawings\Design\DI3316-shr-plan.dgn		REVISIONS				VAR.	2016-013BP	COOK	10	6	
Default	PLOT SCALE = 100.0000' / in.	CHECKED -	REVISED -			CONTRACT NO. 62C32					
	PLOT DATE = 6/14/2016	DATE -	REVISED -			SCALE:	SHEET	OF	SHEETS	STA.	TO

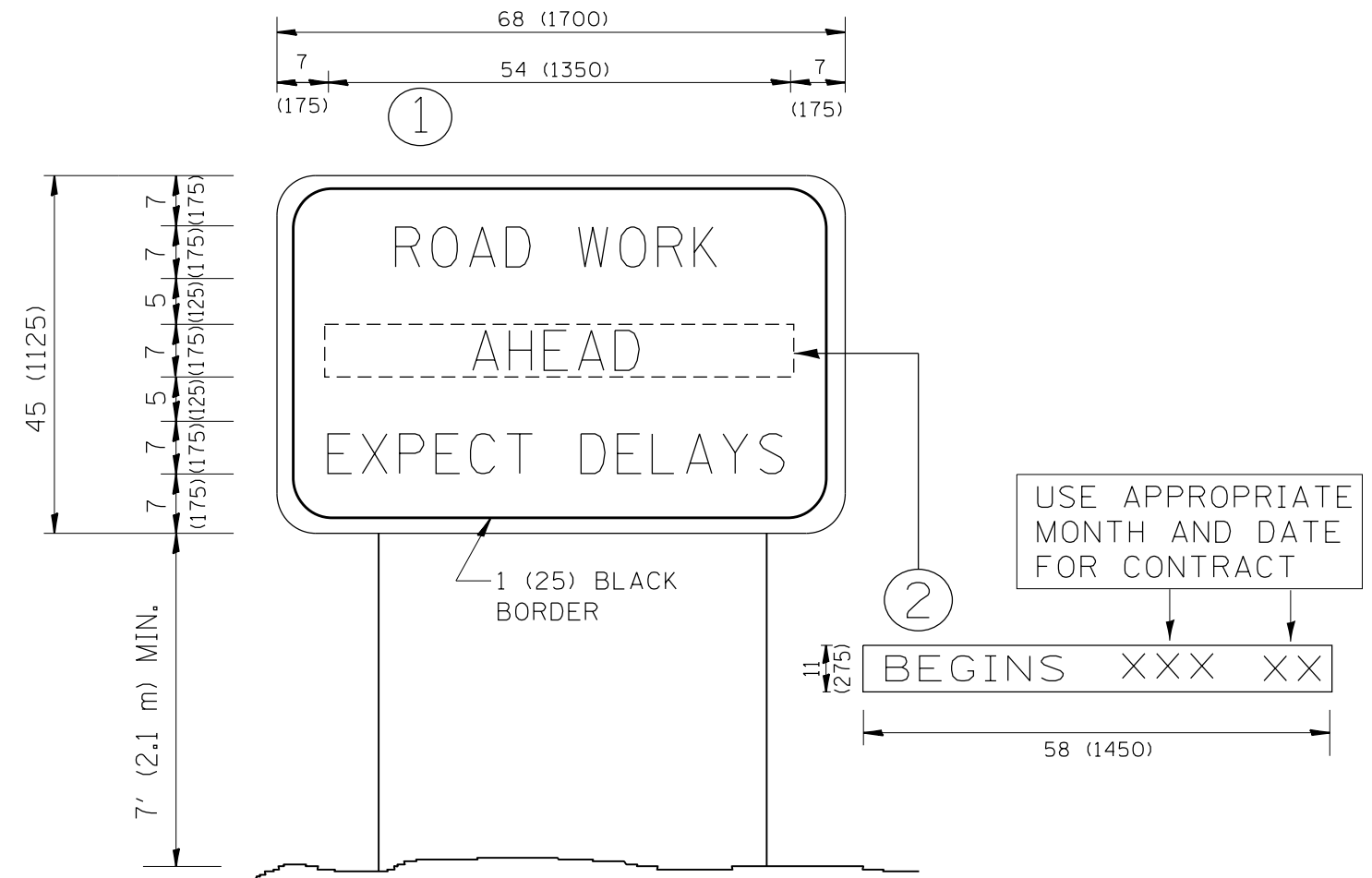
FOR INFORMATION ONLY



BEARING LOCATION	ELASTOMERIC PAD DIMENSIONS (in)			ELAST. LAYERS		STEEL PLATES		TOP PLATE ** DIMENSIONS (in)			HEIGHT H (in)	
	A	B	C	NO.	THICK.	NO.	THICK.	D	E	F		G
S. ABUT.	10 1/2	10 1/2	3 3/4	8	3/8	7	3/32	11 1/2	15	1 1/4	1 1/2	5/4
PIER #1	12	18	2 1/4	3	3/8	2	3/16	13	20	2 1/2	2 1/4	4 1/4
PIER #3	12	18	2 1/4	4	3/8	3	3/16	13	20	2 3/8	2 1/4	5 1/8
N. ABUT.	12	11 1/2	4 7/8	8	1/2	7	1/8	13	15	1 1/4	1 1/2	6 1/2

** THE TOP PLATE SHALL BE M-222 STEEL.





NOTES:

1. USE BLACK LETTERING ON ORANGE BACKGROUND.
2. ERECT SIGNS IN ADVANCE OF THE LOCATION FOR THE "ROAD CONSTRUCTION AHEAD" SIGN AT LOCATIONS AS DIRECTED BY THE ENGINEER.
3. ERECT SIGN ① WITH INSTALLED PANEL ② ONE WEEK PRIOR TO THE START OF CONSTRUCTION.
4. REMOVE PANEL ② SOON AFTER THE START OF CONSTRUCTION.
5. SEE SPECIAL PROVISION FOR "TEMPORARY INFORMATION SIGNING" FOR ADDITIONAL INFORMATION.
6. ONE SIGN ASSEMBLY EQUALS 25.70 SQ. FT. (2.3 SQ. M.)
7. SHALL BE PAID FOR AS TEMPORARY INFORMATION SIGNING.

ALL DIMENSIONS ARE IN INCHES (MILLIMETERS) UNLESS OTHERWISE SHOWN.

FILE NAME =	USER NAME = pyrzenowski	DESIGNED -	REVISED - R. MIRS 09-15-97	STATE OF ILLINOIS DEPARTMENT OF TRANSPORTATION	ARTERIAL ROAD INFORMATION SIGN			F.A. RTE.	SECTION	COUNTY	TOTAL SHEETS	SHEET NO.	
p:\11\084EBIDINTEG.illinois.gov\PWIDOT\Documents\DOT Offices\District 1\Projects\DI3316\Drawings\Design\DI3316-sh-t-plan.dgn		CHECKED -	REVISED - R. MIRS 12-11-97		SCALE: NONE	SHEET NO. 1 OF 1 SHEETS	STA.	TO STA.	VAR.	2016-013BP	COOK	10	10
		PLOT SCALE = 100.0000' / 1in.	REVISED - T. RAMMACHER 02-02-99							TC-22			
		PLOT DATE = 6/14/2016	REVISED - C. JUCIUS 01-31-07										
								CONTRACT NO. 62C32					
FED. ROAD DIST. NO. 1 ILLINOIS FED. AID PROJECT													