

STATE OF ILLINOIS
DEPARTMENT OF TRANSPORTATION
DIVISION OF HIGHWAYS

PROPOSED HIGHWAY PLANS

FAP 595 (IL 5)
SECTION (2-1)TS

SIGNAL MODERNIZATION
ROCK ISLAND COUNTY

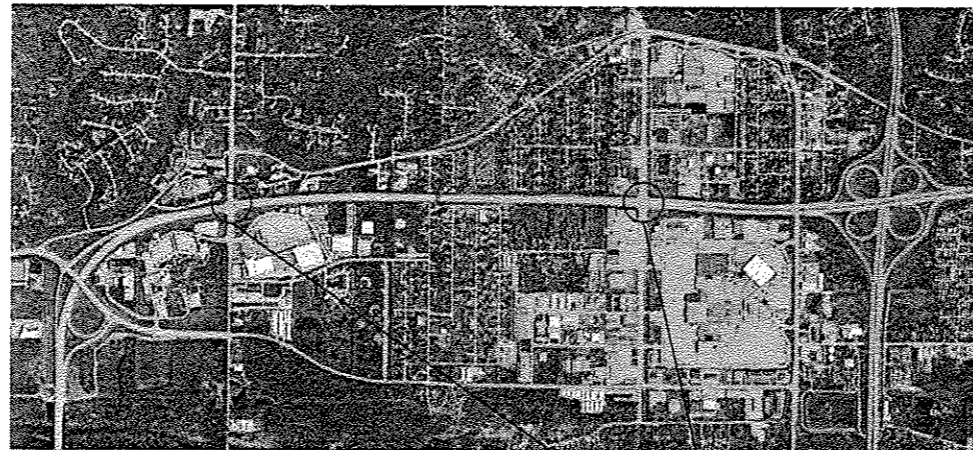
C-92-055-16

INDEX OF SHEETS

- 1. COVER SHEET AND INDEX OF SHEETS
- 2. - 3. SUMMARY OF QUANTITIES
- 4. UTILITIES
- 5. - 8. PLAN SHEETS
- 9. SIGN DETAILS

STANDARDS

- 701006-05
- 701101-05
- 701421-07
- 701701-10
- 701901-05
- 857001-01
- 873001-02
- 877011-07
- 878001-10
- 880006-01
- 000001-06
- 701411-09
- 701601-09



IL 5 AT
7TH AND 16TH STREET

D-92-099-16



LOCATION OF SECTION INDICATED THUS: - [black rectangle] -

J.U.L.I.E.
JOINT UTILITY LOCATION INFORMATION FOR EXCAVATION
1-800-892-0123
OR 811

PROJECT ENGINEER SCOTT KULLERSTRAND 815-284-5468
PROJECT MANAGER KRISTINE L HILL 815-284-5476

T-17-N R-2-W

CONTRACT NO. 64L30

STATE OF ILLINOIS
DEPARTMENT OF TRANSPORTATION

SUBMITTED June 14th 2016
Paul O.
REGIONAL ENGINEER

Aug 12 2016
Maxwell M. Addis PE
ENGINEER OF DESIGN AND ENVIRONMENT

Aug 12 2016
Janice [Signature]
DIRECTOR OF PROGRAM DEVELOPMENT

PRINTED BY THE AUTHORITY
OF THE STATE OF ILLINOIS

TRAFFIC SIGNALS SUMMARY OF QUANTITIES			URBAN 100% STATE		
PAY CODE	ITEM	UNIT	0021 7TH STREET	0021 16TH STREET	TOTAL
67100100	MOBILIZATON	L SUM	0.5	0.5	1
70100310	TRAFFIC CONTROL AND PROTECTION, STANDARD 701421	L SUM	0.5	0.5	1
70100420	TRAFFIC CONTROL AND PROTECTION, STANDARD 701411	EACH	0.5	0.5	1
70102635	TRAFFIC CONTROL AND PROTECTION, STANDARD 701701	L SUM	0.5	0.5	1
* 72000100	SIGN PANEL - TYPE 1	SQ FT	13.5	15	29
* 72000200	SIGN PANEL - TYPE 2	SQ FT	22.5	22.5	45
* 72400310	REMOVE SIGN PANEL - TYPE 1	SQ FT	13.5	15	29
* 72400320	REMOVE SIGN PANEL - TYPE 2	SQ FT	22.5	22.5	45
80500100	ELECTRIC SERVICE INSTALLATION, TYPE A	EACH	1	1	2
81028760	UNDERGROUND CONDUIT COILABLE, NONMETALLIC CONDUIT, 2 1/2" DIA.	FOOT	0	55	55
81702110	ELECTRIC CABLE IN CONDUIT, 600V (XLP - TYPE USE) 1/C No. 10	FOOT	0	200	200
82104250	LUMINAIRE, SODUIM VAPOR, MULTI MOUNT, PHOTO CELL CONTROL, 250 WATT	EACH	0	1	1
85000200	MAINTENANCE OF EXISTING TRAFFIC SIGNAL INSTALLATION	EACH	1	1	2
85700200	FULL-ACTUATED CONTROLLER AND TYPE IV CABINET	EACH	1	0	1
87301245	ELECTRIC CABLE IN CONDUIT, SIGNAL NO 14 5C	FOOT	0	344	344

* Specialty Hems

URBAN
100' STATE

0021

0021

PAY CODE	ITEM	UNIT	7TH STREET	16TH STREET	TOTAL
877029_40	STEEL COMBINATION MAST ARM ASSEMBLY AND POLE 42 FT	EACH	0	1	1
87800415	CONCRETE FOUNDATION, TYPE E DIA., 36 - INCH DIAMETER	FOOT	0	13	13
87900200	DRILL EXISTING HANDHOLE	EACH	0	1	1
88040090	SIGNAL HEAD, POLYCARBONATE, LED, 1-FACE, 3-SECTION, MAST ARM MOUNTED	EACH	9	9	18
88040120	SIGNAL HEAD, POLYCARBONATE, LED, 1-FACE, 4-SECTION MAST ARM MOUNTED	EACH	1	0	1
88040160	SIGNAL HEAD, POLYCARBONATE, LED, 1-FACE, 5-SECTION MAST ARM MOUNTED	EACH	2	0	2
88102717	PEDESTRIAN SIGNAL HEAD, LED, 1-FACE, BRACKET MOUNTED, WITH COUNTDOWN TIMER	EACH	0	8	8
88200100	TRAFFIC SIGNAL BACKPLATE	EACH	12	9	21
89502210	MODIFY EXISTING CONTROLLER CABINET	EACH	0	1	1
89502375	REMOVE EXISTING TRAFFIC SIGNAL EQUIPMENT	EACH	1	1	2
89502385	REMOVE EXISTING CONCRETE FOUNDATION	EACH	0	1	1
X8800101	PEDESTRIAN PUSH BUTTON SPECIAL	EACH	0	8	8
Z0023700	FILLING EXISITNG HANDHOLE	EACH	2	4	6
Z0033072	VIDEO VEHICLE DETECTION SYSTEM	EACH	1	1	2

FILE NAME P:\Projects\Contract 64130 IL 5 th 7th	USER NAME K.NIKI	DESIGNED -	REVISED -	STATE OF ILLINOIS DEPARTMENT OF TRANSPORTATION	SUMMARY OF QUANTITIES	F.A.P. RTE. 595	SECTION 12-111S	COUNTY ROCK ISLAND	TOTAL SHEETS 9	SHEET NO. 3		
Default	PLOT SCALE 42.746' / in.	CHECKED -	REVISED -			SCALE:	SHEET OF SHEETS	STA. TO STA.	CONTRACT NO. 64130			
	PLOT DATE Jun-16-2016 07:46:00 AM	DATE -	REVISED -			ILLINOIS FED. AID PROJECT						

UTILITIES			
NAME AND ADDRESS	TYPE	TELEPHONE	
MR. ROGER GRANELL GENESEO TELEPHONE CO. 111 E. 1ST STREET GENESEO, IL 61254	TELEPHONE	309-944-8025	JULIE MEMBER? YES CALL 800-892-0123
ME. DAVID CREEN AT&T 2800 7TH STREET MOLINE, IL 61265	TELEPHONE	309-757-4707	JULIE MEMBER? YES CALL 800-892-0123
MR. NATE TEAGER MIDAMERICAN ENERGY COMPANY 5955 FENNO ROAD BETTENDORF, IA 52722	ELECTRIC	563-333-8706	JULIE MEMBER? YES CALL 800-892-0123
MR. ROD HAWK MIDAMERICAN ENERGY COMPANY 2811 - 5TH AVENUE ROCK ISLAND, IL 61201	GAS	309-793-3760	JULIE MEMBER? NO CALL 800-281-2954 (CELL)
MR. ANTONIO GLESSNER CENTURYLINK 3908 UTICA RIDGE ROAD BETTENDORF, IA 52722	TELEPHONE	563-355-6402	JULIE MEMBER? YES CALL 800-892-0123
MR DENNES JARDING MEDIACOM 3900 - 26TH AVENUE MOLINE, IL 61265	CATV	309-743-4750	JULIE MEMBER? YES CALL 800-892-0123
MR. MICHAEL WALDRON CITY OF MOLINE 3635 - 4TH AVENUE MOLINE, IL 61265	WATER & SEWER	309-797-0716	JULIE MEMBER? YES CALL 800-892-0123
MR. DAVID FERREIRA WINDSTREAM 211-B SE ADAMS STREET PEORIA, IL 61602	COMMUNICATIONS	309-282-3110	JULIE MEMBER? CALL

IL 5 AT 7TH STREET MOLINE

THE PROJECT SCOPE CONSISTS OF THE UPDATING OF OLDER SIGNAL EQUIPMENT PER THE REQUEST OF THE CITY OF MOLINE AS FOLLOWS:

- REMOVE AND REPLACE
 9 - 3 SEC MASTARM MOUNTED SIGNAL HEADS
 1 - 4 SEC MASTARM MOUNTED SIGNAL HEAD
 2 - 5 SEC MASTARM MOUNTED SIGNAL HEADS
 12 - BACKPLATES
 1 - FULL -ACTUATED CONTROLLER CABINET
 1 - ELECTRIC SERVICE INSTALLATION
 4 - MASTARM MOUNTED STREET SIGNS

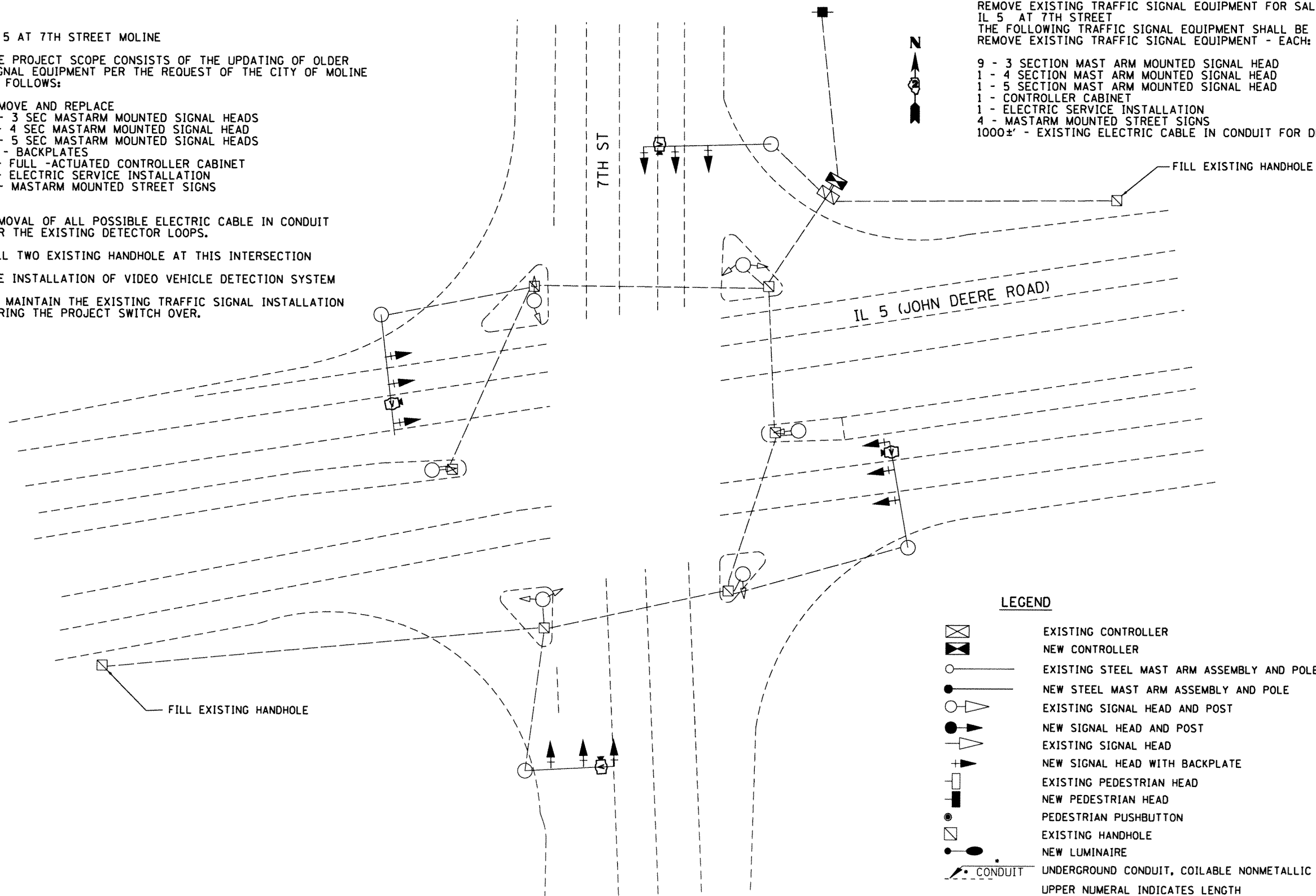
REMOVAL OF ALL POSSIBLE ELECTRIC CABLE IN CONDUIT FOR THE EXISTING DETECTOR LOOPS.

FILL TWO EXISTING HANDHOLE AT THIS INTERSECTION

THE INSTALLATION OF VIDEO VEHICLE DETECTION SYSTEM TO MAINTAIN THE EXISTING TRAFFIC SIGNAL INSTALLATION DURING THE PROJECT SWITCH OVER.

REMOVE EXISTING TRAFFIC SIGNAL EQUIPMENT FOR SALVAGE:
 IL 5 AT 7TH STREET
 THE FOLLOWING TRAFFIC SIGNAL EQUIPMENT SHALL BE FOR PAID AS REMOVE EXISTING TRAFFIC SIGNAL EQUIPMENT - EACH:

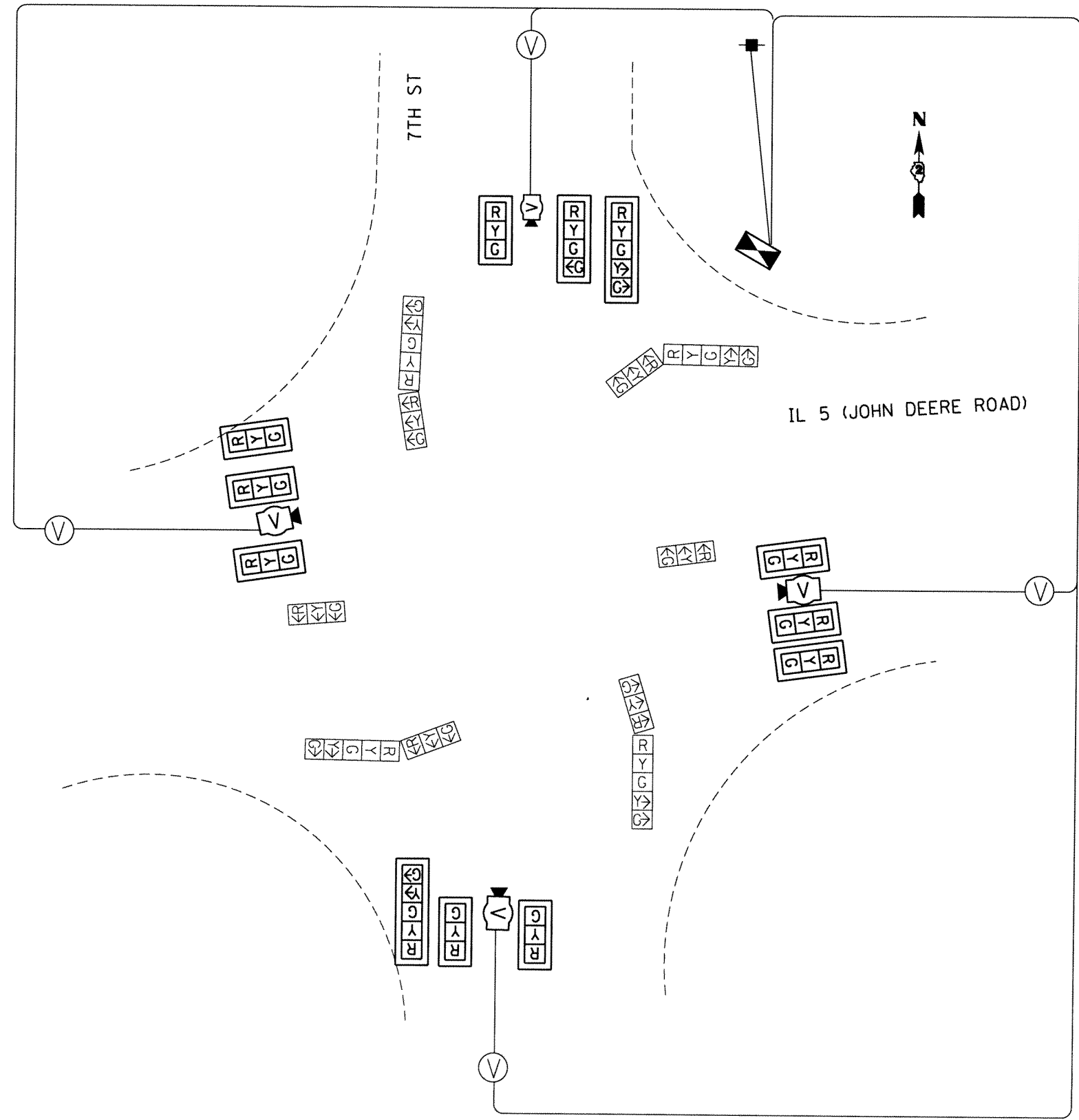
- 9 - 3 SECTION MAST ARM MOUNTED SIGNAL HEAD
 1 - 4 SECTION MAST ARM MOUNTED SIGNAL HEAD
 1 - 5 SECTION MAST ARM MOUNTED SIGNAL HEAD
 1 - CONTROLLER CABINET
 1 - ELECTRIC SERVICE INSTALLATION
 4 - MASTARM MOUNTED STREET SIGNS
 1000±' - EXISTING ELECTRIC CABLE IN CONDUIT FOR DETECTOR LOOPS



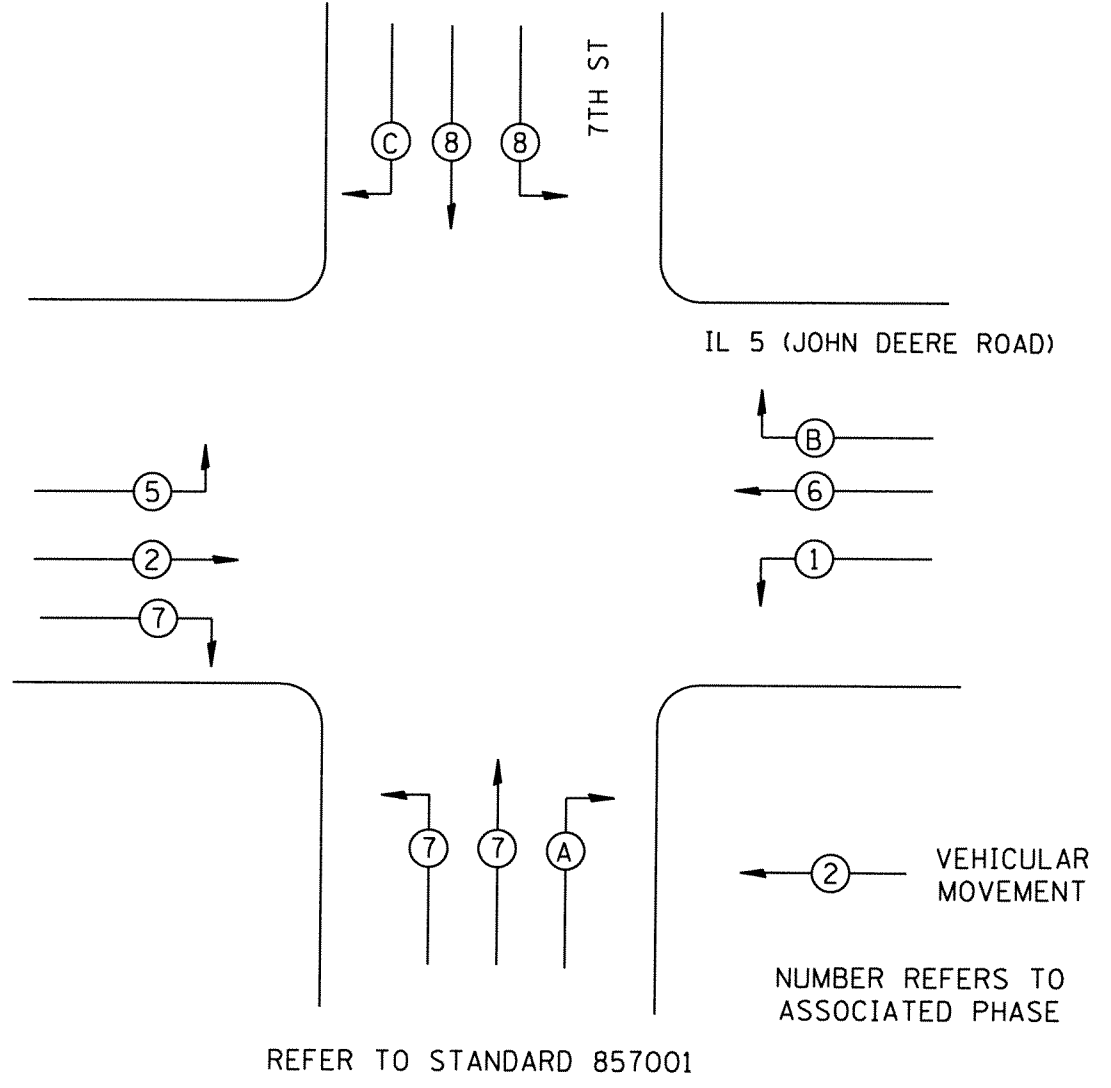
LEGEND

- EXISTING CONTROLLER
 - NEW CONTROLLER
 - EXISTING STEEL MAST ARM ASSEMBLY AND POLE
 - NEW STEEL MAST ARM ASSEMBLY AND POLE
 - EXISTING SIGNAL HEAD AND POST
 - NEW SIGNAL HEAD AND POST
 - EXISTING SIGNAL HEAD
 - NEW SIGNAL HEAD WITH BACKPLATE
 - EXISTING PEDESTRIAN HEAD
 - NEW PEDESTRIAN HEAD
 - PEDESTRIAN PUSHBUTTON
 - EXISTING HANDHOLE
 - NEW LUMINAIRE
 - CONDUIT UNDERGROUND CONDUIT, COILABLE NONMETALLIC CONDUIT
- UPPER NUMERAL INDICATES LENGTH
 LOWER NUMERAL INDICATES CONDUIT SIZE

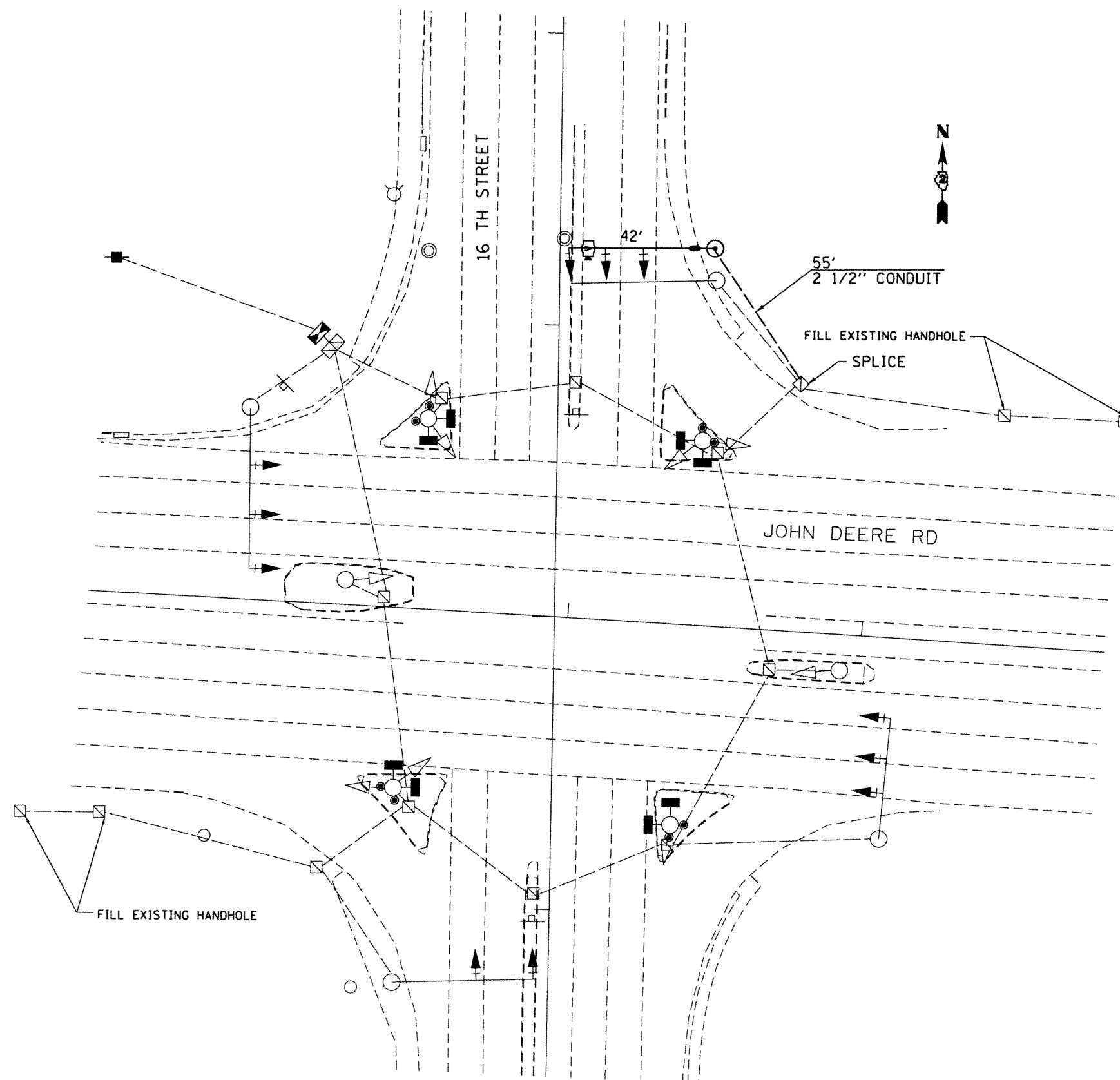
FILE NAME =	USER NAME = h11k1	DESIGNED -	REVISED -	STATE OF ILLINOIS DEPARTMENT OF TRANSPORTATION	IL 5 AT 7TH ST PLANS		F.A.P. R.T.E. =	SECTION	COUNTY	TOTAL SHEETS	SHEET NO.
P:\Projects\Contract 64L30 IL5 th 7th and 16th st\64L30 plan sheets .dgn	DRAWN -	REVISED -	595				12-111S	ROCK ISLAND	9	5	
Default	CHECKED -	REVISED -	CONTRACT NO. 64L30								
	PLOT DATE = Jun-14-2016 02:45:23 PM	DATE -	REVISED -	SCALE: _____	SHEET _____ OF _____ SHEETS	STA. _____ TO STA. _____	ILLINOIS FED. AID PROJECT				



PHASE DESIGNATION DIAGRAM



FILE NAME =	USER NAME = h11k1	DESIGNED -	REVISED -	STATE OF ILLINOIS DEPARTMENT OF TRANSPORTATION	IL 5 AT 7TH ST SIGNAL DETAIL	F.A.U. RTE.	SECTION	COUNTY	TOTAL SHEETS	SHEET NO.	
P:\Projects\Contract 64L30 IL5 th 7th rd 16th st\64L30 plan sheets.dgn		DRAWN -	REVISED -			595	12-1115	ROCK ISLAND	9	6	
Default		CHECKED -	REVISED -			CONTRACT NO. 64L30					
	PLOT DATE = Jun-14-2016 02:45:30 PM	DATE -	REVISED -			ILLINOIS FED. AID PROJECT					



IL 5 AT 16TH STREET MOLINE

THE PROJECT SCOPE CONSISTS OF THE UPDATING OF OLDER SIGNAL EQUIPMENT PER THE REQUEST OF THE CITY OF MOLINE AS FOLLOWS:

- REMOVE AND REPLACE
- 9 - 3 SEC MASTARM MOUNTED SIGNAL HEADS
- 9 - BACKPLATES
- 8 - PEDESTRIAN SIGNAL HEADS
- 8 - PEDESTRIAN PUSH BUTTONS
- 4 - STREET SIGNS
- 1 - COMBINATION MAST ARM ASSEMBLY (NORTHEAST QUADRANT)
- 1 - ELECTRIC SERVICE INSTALLATION
- 1 - COMBINATION MASTARM ASSEMBLY AND LUMINAIRE

REMOVAL OF ALL POSSIBLE ELECTRIC CABLE IN CONDUIT FOR THE EXISTING DETECTOR LOOPS.

FILL FOUR EXISTING HANDHOLE AT THIS INTERSECTION

THE INSTALLATION OF VIDEO VEHICLE DETECTION SYSTEM

MODIFY THE EXISTING CONTROLLER CABINET TO ACCOMADATE THE VIDEO VEHICLE DETECTION SYSTEM

TO MAINTAIN THE EXISTING TRAFFIC SIGNAL INSTALLATION DURING THE PROJECT SWITCH OVER.

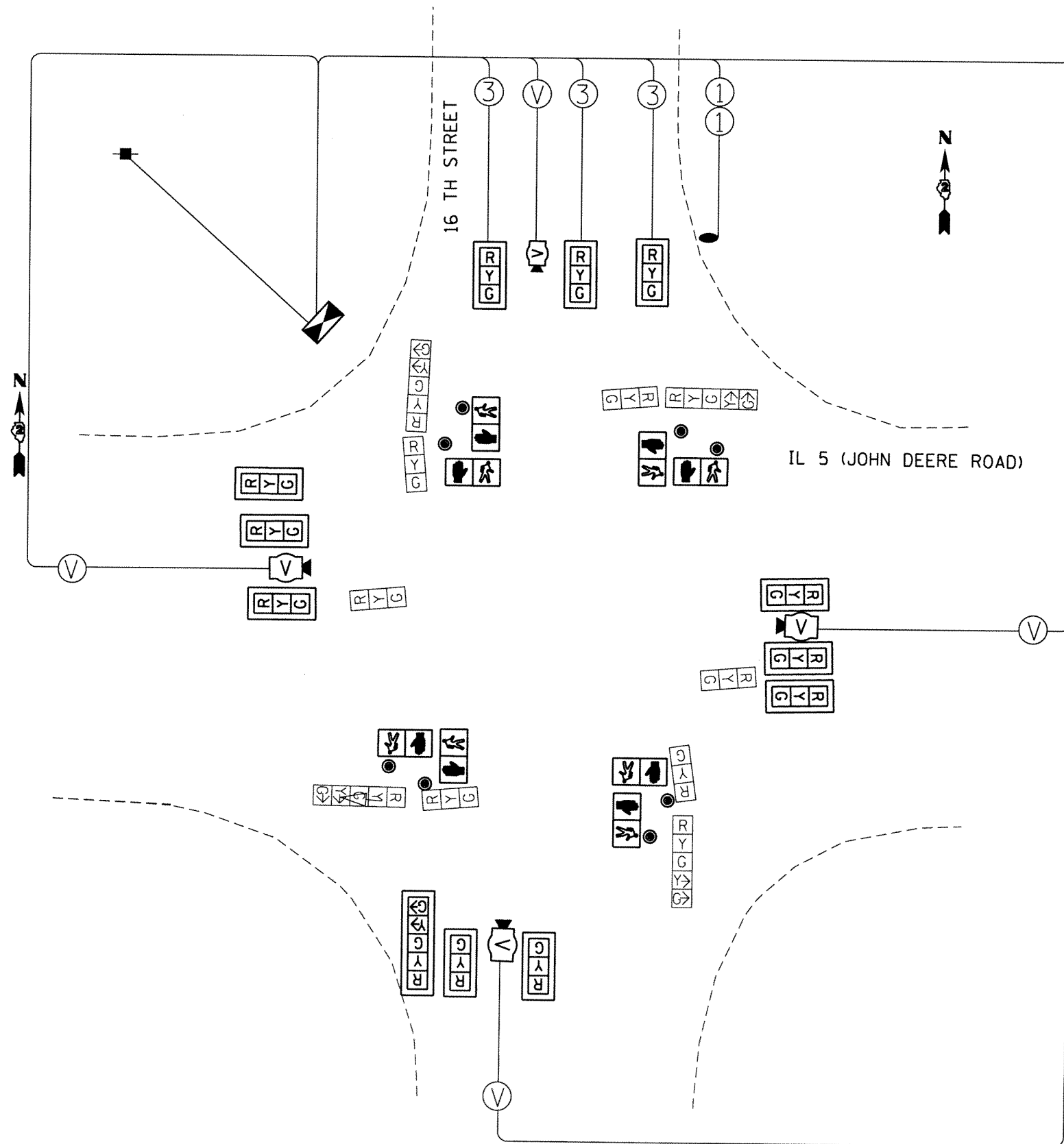
LEGEND

- EXISTING CONTROLLER
- NEW CONTROLLER
- EXISTING STEEL MAST ARM ASSEMBLY AND POLE
- NEW STEEL MAST ARM ASSEMBLY AND POLE
- EXISTING SIGNAL HEAD AND POST
- NEW SIGNAL HEAD AND POST
- EXISTING SIGNAL HEAD
- NEW SIGNAL HEAD WITH BACKPLATE
- EXISTING PEDESTRIAN HEAD
- NEW PEDESTRIAN HEAD
- PEDESTRIAN PUSHBUTTON
- EXISTING HANDHOLE
- NEW LUMINAIRE
- CONDUIT UNDERGROUND CONDUIT, COILABLE NONMETALLIC CONDUIT
- UPPER NUMERAL INDICATES LENGTH
- LOWER NUMERAL INDICATES CONDUIT SIZE

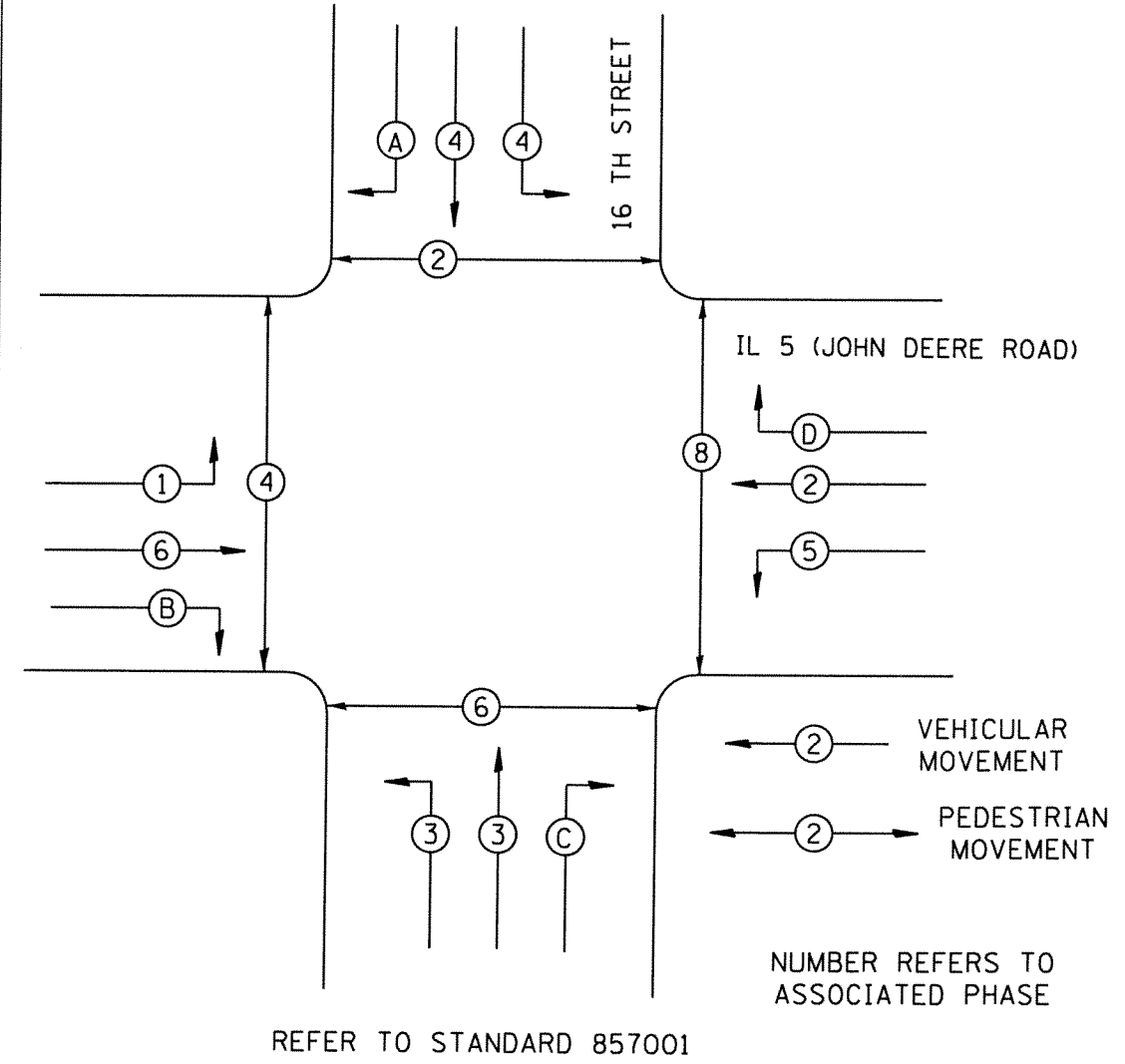
REMOVE EXISTING TRAFFIC SIGNAL EQUIPMENT FOR SALVAGE:
 IL 5 AT 16TH STREET
 THE FOLLOWING TRAFFIC SIGNAL EQUIPMENT SHALL BE FOR PAID AS REMOVE EXISTING TRAFFIC SIGNAL EQUIPMENT - EACH:

- 9 - 3 SECTION MAST ARM MOUNTED SIGNAL HEAD
- 9 - BACKPLATES
- 8 - PEDESTRIAN SIGNAL HEADS
- 8 - PEDESTRIAN PUSH BUTTONS
- 1 - CONTROLLER CABINET
- 1 - ELECTRIC SERVICE INSTALLATION
- 4 - MASTARM MOUNTED STREET SIGNS
- 1 - COMBINATION MASTARM ASSEMBLY AND LUMINAIRE
- 1000± - EXISTING ELECTRIC CABLE IN CONDUIT FOR DETECTOR LOOPS

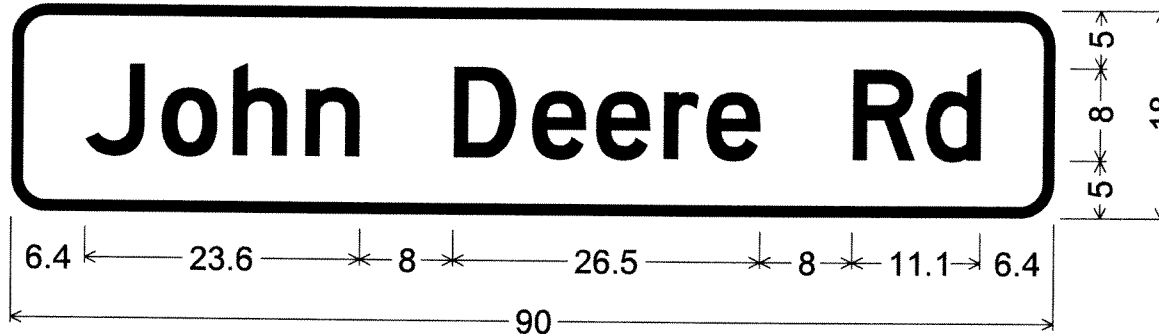
FILE NAME =	USER NAME = hllkl	DESIGNED - _____	REVISED - _____	STATE OF ILLINOIS DEPARTMENT OF TRANSPORTATION	IL 5 AT 16TH ST PLANS		F.A.P. RTE. =	SECTION	COUNTY	TOTAL SHEETS	SHEET NO.
P:\Projects\Contract 64L30 IL5 th 7th and 16th st\64L30 plan sheets .dgn		DRAWN - _____	REVISED - _____		595	(2-1)IS	BOCK ISLAND	9	7		
Default	PLOT SCALE = 42.343' / 1in.	CHECKED - _____	REVISED - _____		SCALE: _____ SHEET _____ OF _____ SHEETS STA. _____ TO STA. _____			CONTRACT NO. 64L30			
	PLOT DATE = Jun-14-2016 02:45:39 PM	DATE - _____	REVISED - _____		ILLINOIS FED. AID PROJECT						



PHASE DESIGNATION DIAGRAM

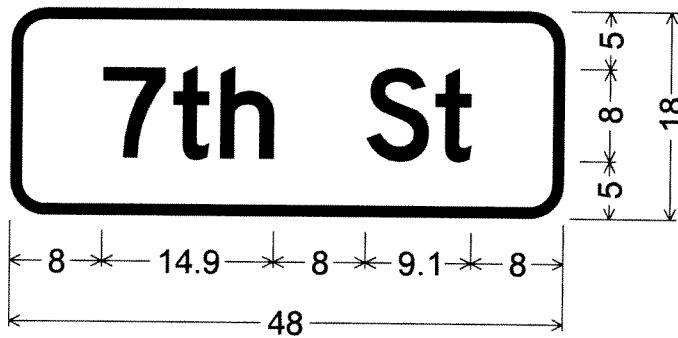


FILE NAME =	USER NAME = h11k1	DESIGNED -	REVISED -	STATE OF ILLINOIS DEPARTMENT OF TRANSPORTATION	IL 5 AT 16TH ST SIGNAL DETAILS	F.A.P. RTE. =	SECTION =	COUNTY =	TOTAL SHEETS =	SHEET NO. =	
Pr\Projects\Contract 64L30 IL 5 th 7th and 16th st\64L30 plan sheets.dgn	16th st\64L30 plan sheets.dgn	DRAWN -	REVISED -			599	12-1115	ROCK ISLAND	9	8	
Default	PLOT SCALE = 43.849' / in.	CHECKED -	REVISED -			CONTRACT NO. 64L30					
	PLOT DATE = Jun-14-2016 02:45:46 PM	DATE -	REVISED -			ILLINOIS FED. AID PROJECT					



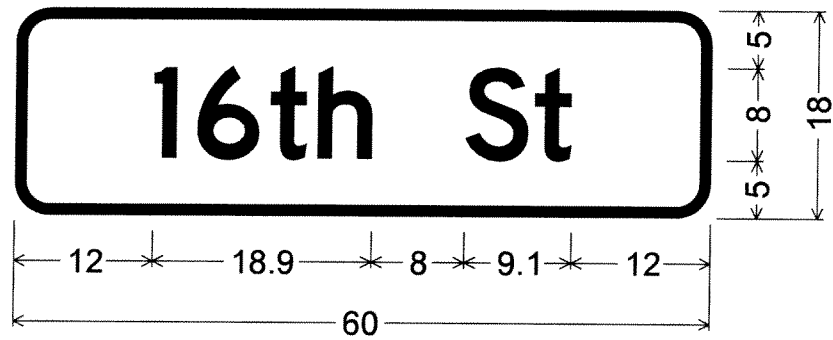
John Deere Rd sign;
 3.0" Radius, 1.0" Border, White on Green;
 [John Deere Rd] D 2K;
 Table of letter and object lefts.

J	o	h	n	D	e	e	r	e	R	d
6.4	12.9	19.1	25.4	38.0	44.8	50.3	56.1	59.8	72.5	78.9



7th Street sign;
 3.0" Radius, 1.0" Border, White on Green;
 [7th St] D 2K;
 Table of letter and object lefts.

7	t	h	S	t
8.0	14.1	18.1	30.9	36.8



16th Street sign;
 3.0" Radius, 1.0" Border, White on Green;
 [16th St] D 2K;
 Table of letter and object lefts.

1	6	t	h	S	t
12.0	15.8	22.1	26.1	38.9	44.8