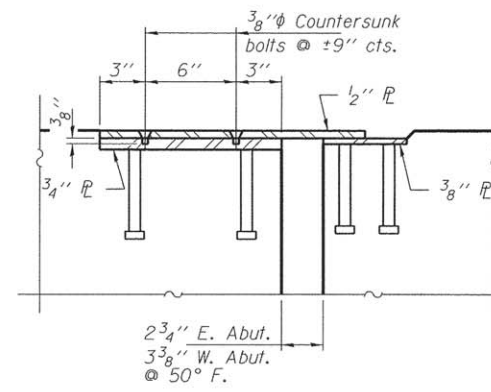
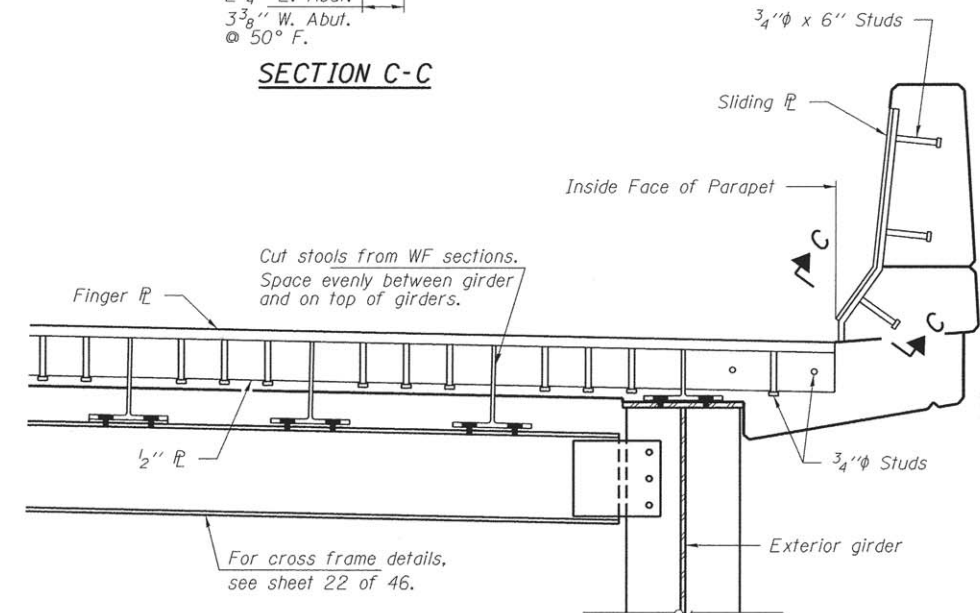


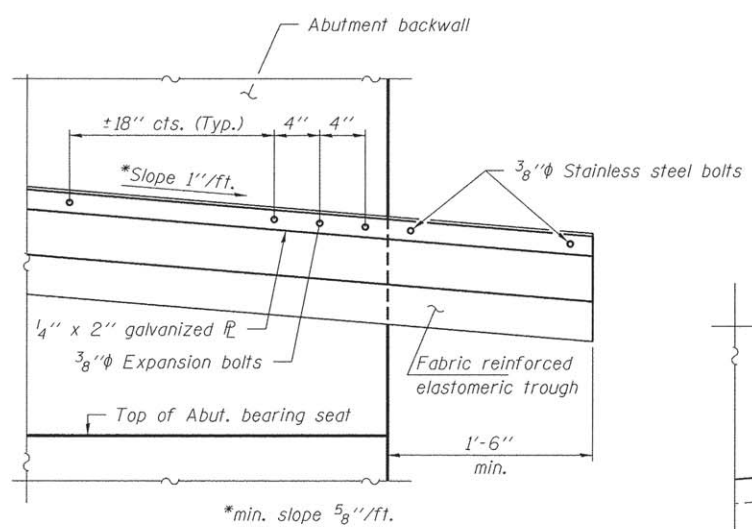
SECTION B-B



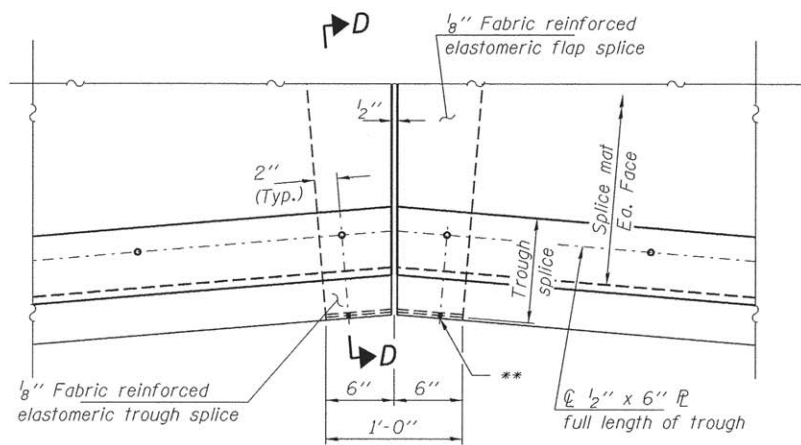
SECTION C-C



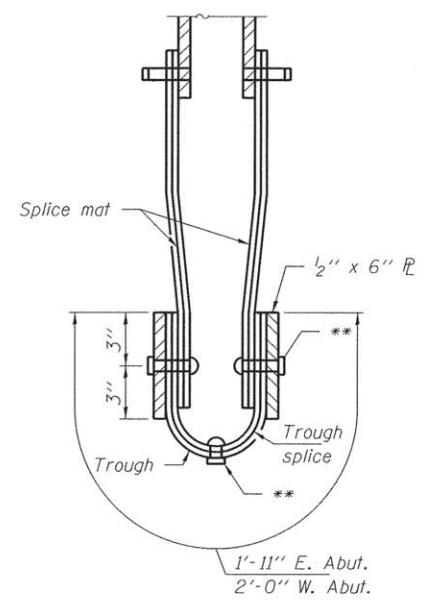
SECTION A-A



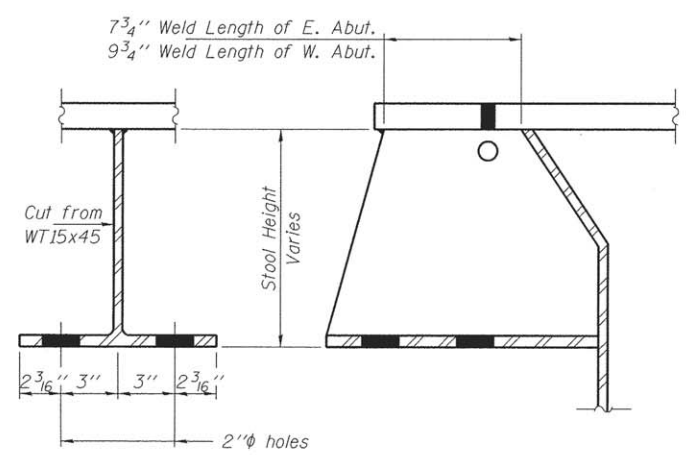
DETAIL B



THROUGH SPLICE DETAIL



SECTION D-D



FINGER PLATE STOOL DETAIL

** 3/8" Stainless Steel bolts with washers & nuts. Provide brass grommet in trough.

Note: Fabric reinforced material for trough and side flap shall be according to Section 520 of the Standard Specifications.

FILE NAME = 100110-sht-bridge.dgn	USER NAME =	DESIGNED - S.M.S.	REvised - 9/12/2016	STATE OF ILLINOIS DEPARTMENT OF TRANSPORTATION	FINGER PLATE JOINT DETAILS STRUCTURE NO. 090-3248	F.A.S.	SECTION	COUNTY	TOTAL SHEETS	SHEET NO.	
3085 STEVENSON DRIVE, SUITE 201 SPRINGFIELD, ILLINOIS 62703 217.546.3400 www.jhrengineering.com	PLOT SCALE =	CHECKED - D.W.T.	REvised -			461	07-00010-12-BR	TAZEWELL	91	43	
194.000959 ILLINOIS PROFESSIONAL DESIGN FIRM L3 / PE / SE CORPORATION	PLOT DATE = 6/30/2016	DRAWN - D.A.B.	REvised -			MANITO RD OVER MACKINAW RIV.	CONTRACT NO. 89634	ILLINOIS FED. AID PROJECT			
		CHECKED - M.D.C.	REvised -			SHEET NO. 25 OF 46 SHEETS					