

ROUTE	SECTION	COUNTY	TOTAL SHEETS	SHEET NO.
F.A.S. 1706	16-00096-00-RS	EFFINGHAM	2	1
CONTRACT NO. 95797		ILLINOIS PROJECT		


STATE OF ILLINOIS
DEPARTMENT OF TRANSPORTATION
DIVISION OF HIGHWAYS

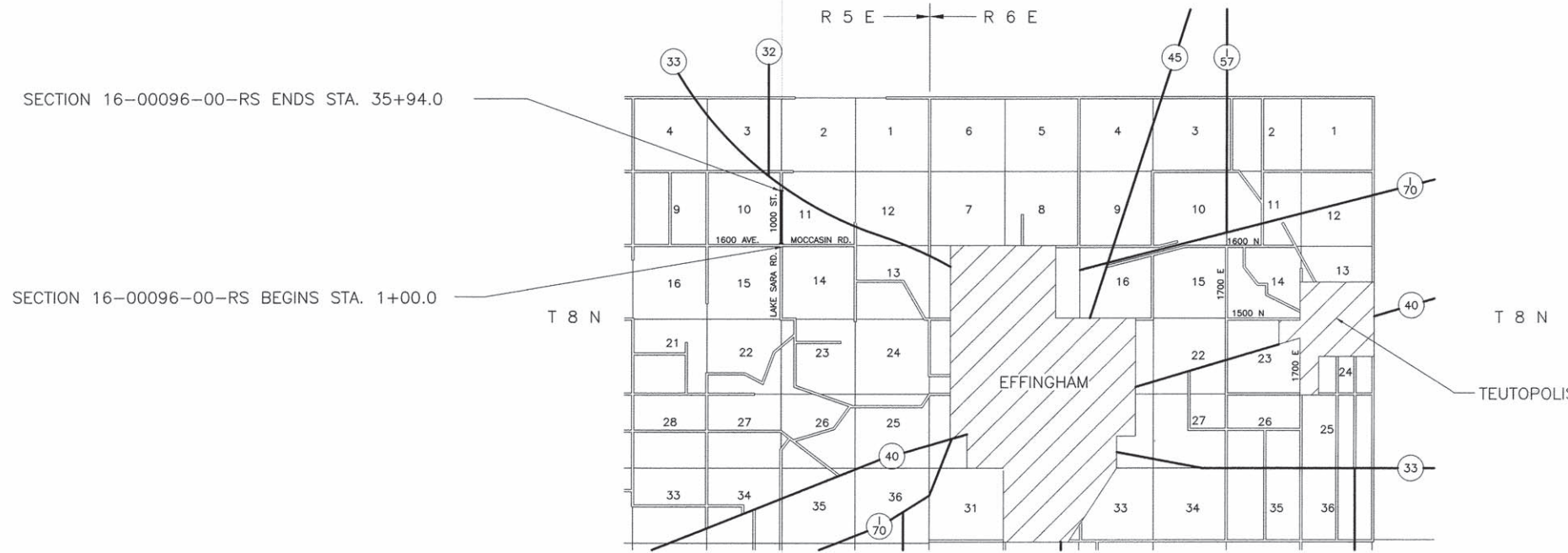
PLANS FOR PROPOSED
FEDERAL AID SECONDARY PROJECT

STR FUNDS
EFFINGHAM COUNTY
SECTION 16-00096-00-RS
F.A.S. 1706
COUNTY HIGHWAY 6
JOB NO. C-97-073-16
PROJECT NO. RS-1706(106)

SHEET	ITEM
1	COVER SHEET
2	SUMMARY OF QUANTITIES
	STANDARD 701001-02
	STANDARD 701006-05
	STANDARD 701011-04
	STANDARD 701201-04
	STANDARD 701301-04
	STANDARD 701306-03
	STANDARD 701311-03
	STANDARD 701901-05
	STANDARD 780001-05

THESE PLANS WERE PREPARED BY ME, OR A FULL TIME MEMBER OF MY STAFF, WORKING UNDER MY PERSONAL SUPERVISION.


[Signature]
 ILLINOIS REG. PROF. ENG. 51474
 LICENSE EXPIRES 11/30/17
 101 N. FOURTH ST.; SUITE 304
 EFFINGHAM, ILLINOIS 62401
 PHONE 217-342-6550
 DATE 6/30/2016



RURAL MAJOR COLLECTOR
ADT = 3750
DESIGN SPEED 60 MPH

CONTRACT NO. 95797

NET LENGTH SECTION 16-00096-00-RS = 3,494.0 Ft. = 0.662 Mi.

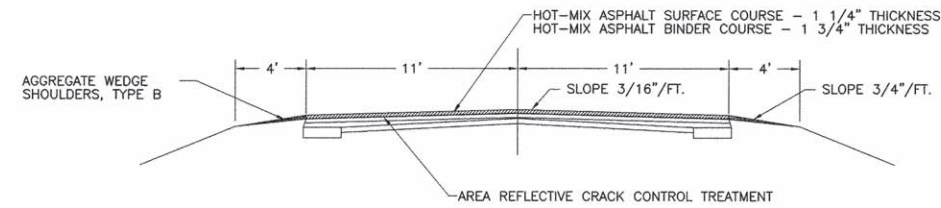
Joint Utility Locating Information for Excavators

JULIE 1-800-892-0123

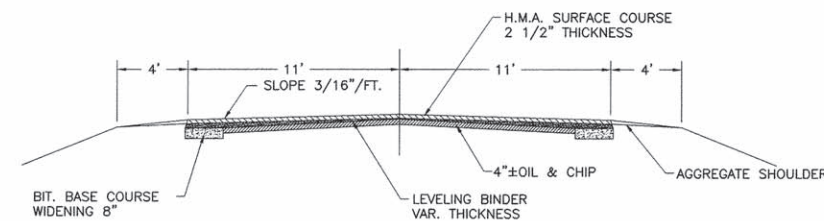
STATE OF ILLINOIS DEPARTMENT OF TRANSPORTATION	
APPROVED	<i>[Signature]</i> COUNTY ENGINEER
PASSED	<i>[Signature]</i> DISTRICT SEVEN ENGINEER OF LOCAL ROADS AND STREETS
Releasing For Bid Based on Limited Review	<i>[Signature]</i> DEPUTY DIRECTOR OF HIGHWAYS REGION FOUR ENGINEER

ROUTE	SECTION	COUNTY	TOTAL SHEETS	SHEET NO.
F.A.S. 1706	16-00096-00-RS	EFFINGHAM	2	2
CONTRACT NO. 95797		ILLINOIS	PROJECT	

TYPICAL SECTION OF PROPOSED IMPROVEMENT



TYPICAL SECTION OF EXISTING ROAD



TOTAL PROJECT SUMMARY OF QUANTITIES

QUANTITY	UNIT	ITEM	CODE NUMBER
1	L SUM	TRAFFIC CONTROL AND PROTECTION, (SPECIAL)	X7010216
28	TON	AGGREGATE SURFACE COURSE, TYPE B	40200800
325	POUND	BITUMINOUS MATERIALS (PRIME COAT)	40600275
36	POUND	BITUMINOUS MATERIALS (TACK COAT)	40600290
300	SQ YD	HOT-MIX ASPHALT SURFACE REMOVAL - BUTT JOINT	40600982
135	SQ YD	TEMPORARY RAMP	40600990
940	TON	HOT-MIX ASPHALT BINDER COURSE, IL 9.5, N50	40602978
660	TON	HOT-MIX ASPHALT SURFACE COURSE, MIX "C", N70	40603315
8300	SQ YD	HOT-MIX ASPHALT SURFACE REMOVAL, 1"	44000153
8600	SQ YD	AREA REFLECTIVE CRACK CONTROL TREATMENT	44300100
300	TON	AGGREGATE WEDGE SHOULDER, TYPE B	48102100
1	L SUM	MOBILIZATION	67100100
1	L SUM	TRAFFIC CONTROL AND PROTECTION, STANDARD 701201	70100450
1	L SUM	TRAFFIC CONTROL AND PROTECTION, STANDARD 701306	70100460
1080	FOOT	SHORT TERM PAVEMENT MARKING	70300100
120	SQ FT	SHORT TERM PAVEMENT MARKING REMOVAL	70300150
7,875	FOOT	PAINT PAVEMENT MARKING - LINE 4"	78001110 Δ

Δ SPECIALTY ITEM

HOT MIX ASPHALT

HOT-MIX ASPHALT SURFACE COURSE, MIXTURE "C" N70
 PG GRADE: PG 64-22
 DESIGN AIR VOIDS: 4.0% @ Ndesign 70
 MIXTURE COMPOSITION: IL-9.5
 FRICTION AGGREGATE: MIXTURE C

HOT-MIX ASPHALT BINDER COURSE, IL 9.5, N50
 PG GRADE: PG 64-22
 DESIGN AIR VOIDS: 4.0% @ Ndesign 50
 MIXTURE COMPOSITION: IL-9.5
 FRICTION AGGREGATE: N/A

PAINT PAVEMENT MARKING LINE 4"

CENTERLINE STRIPE
 Sta. 1+00 to 35+94.0 = 875 Foot

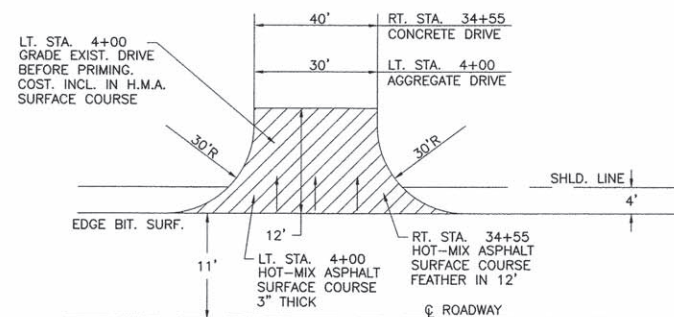
EDGE LINE
 Rt. & Lt. Sta. 1+00 to 35+94.0 = 7,000 Foot

STRIPING QUANTITY
 Sta. 1+00 to 35+94.0 = 7,875 Foot

HOT-MIX ASPHALT

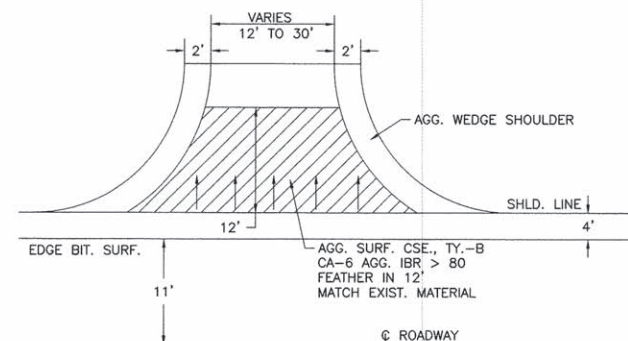
<u>BINDER COURSE</u>	<u>SURFACE COURSE</u>
<u>MAINLINE BINDER</u>	<u>MAINLINE SURFACE</u>
Sta. 1+00 to 35+94.0 = 940 Ton	Sta. 1+00 to 35+94.0 = 618 Ton
	<u>COMMERCIAL ENTRANCES</u>
	Sta. 1+00 to 35+94.0 = 22 Ton
	<u>MAILBOX TURNOUTS</u>
	Sta. 1+00 to 35+94.0 = 20 Ton
TOTAL = 660 Ton	

DETAIL OF COMMERCIAL ENTRANCES

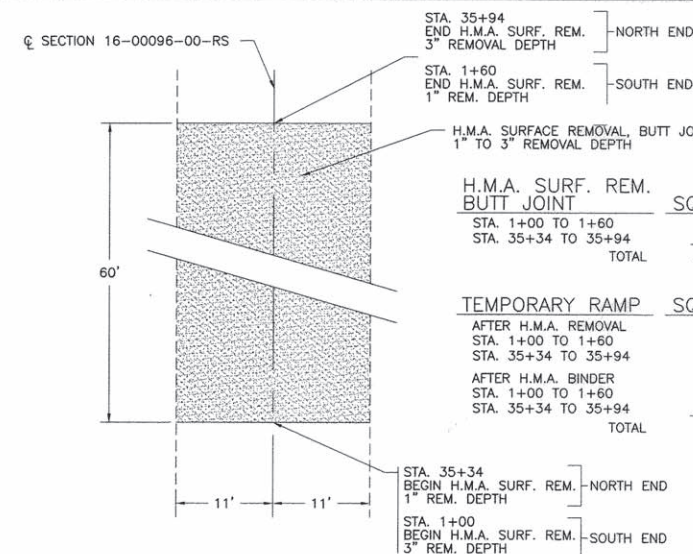


<u>HOT-MIX ASPHALT SURFACE COURSE</u>	<u>BITUMINOUS MATERIALS (PRIME COAT)</u>
LT. STA. 4+00 = 12 TON	LT. STA. 4+00 = 160 POUND
RT. STA. 34+55 = 10 TON	
TOTAL 22 TON	
<u>TEMPORARY RAMP</u>	<u>BITUMINOUS MATERIALS (TACK COAT)</u>
LT. STA. 4+00 = 20 S.Y.	RT. STA. 34+55 = 36 POUND
RT. STA. 34+55 = 25 S.Y.	
TOTAL 45 S.Y.	
	<u>AGGREGATE SURFACE COURSE, TYPE B</u>
	LT. STA. 4+00 = 2 TON

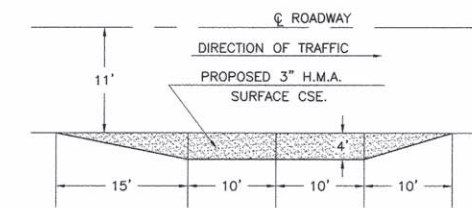
DETAIL OF PRIVATE ENTRANCES



<u>AGGREGATE SURFACE COURSE, TYPE B</u>
RT. STA. 12+60 = 5 TON
LT. STA. 13+45 = 5 TON
LT. STA. 20+85 = 6 TON
LT. STA. 23+40 = 5 TON
RT. STA. 25+55 = 5 TON
TOTAL 26 TON



H.M.A. SURFACE REMOVAL - BUTT JOINT DETAIL



BITUMINOUS MATERIALS (PRIME COAT)
 5 @ 33 LB. EACH = 165 POUND

HOT-MIX ASPHALT SURFACE COURSE
 5 @ 4.0 TON EACH = 20 TON

MAILBOX TURNOUT DETAIL