

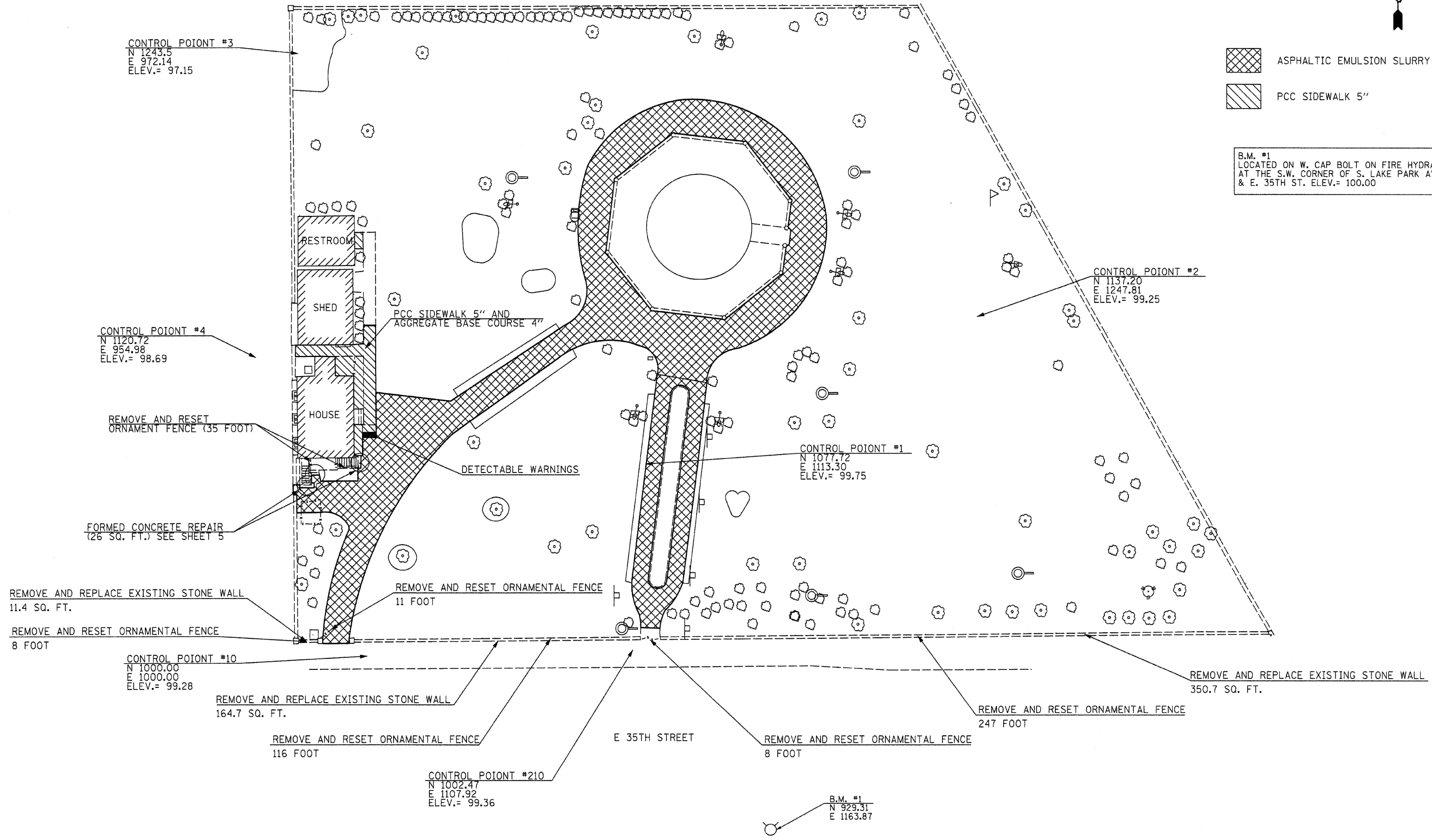




-  ASPHALTIC EMULSION SLURRY SEAL
-  PCC SIDEWALK 5"

B.M. #1
 LOCATED ON W. CAP BOLT ON FIRE HYDRANT
 AT THE S.W. CORNER OF S. LAKE PARK AVE.
 & E. 35TH ST. ELEV.= 100.00



FILE NAME =	USER NAME = #USER#	DESIGNED - R.H.D	REVISED -	STATE OF ILLINOIS DEPARTMENT OF TRANSPORTATION	PROPOSED LAYOUT STEPHEN DOUGLAS TOMB STATE HISTORIC SITE			F.A. RTE.	SECTION	COUNTY	TOTAL SHEETS	SHEET NO.
#FILE#		DRAWN - J.H.F.	REVISED -		SCALE: 1" = 20'	SHEET NO. 4 OF 11 SHEETS	STA.	TO STA.	COOK	11	4	
		CHECKED - T.T.P.	REVISED -		CONTRACT NO. 46137							
		DATE - 5/12/10	REVISED -		FED. ROAD DIST. NO. [ILLINOIS] FED. AID PROJECT							
					JOB NO. 250-061-0 VASCONCELLES ENGINEERING CORP. DESIGN FIRM REGISTRATION NUMBER 184-002107							