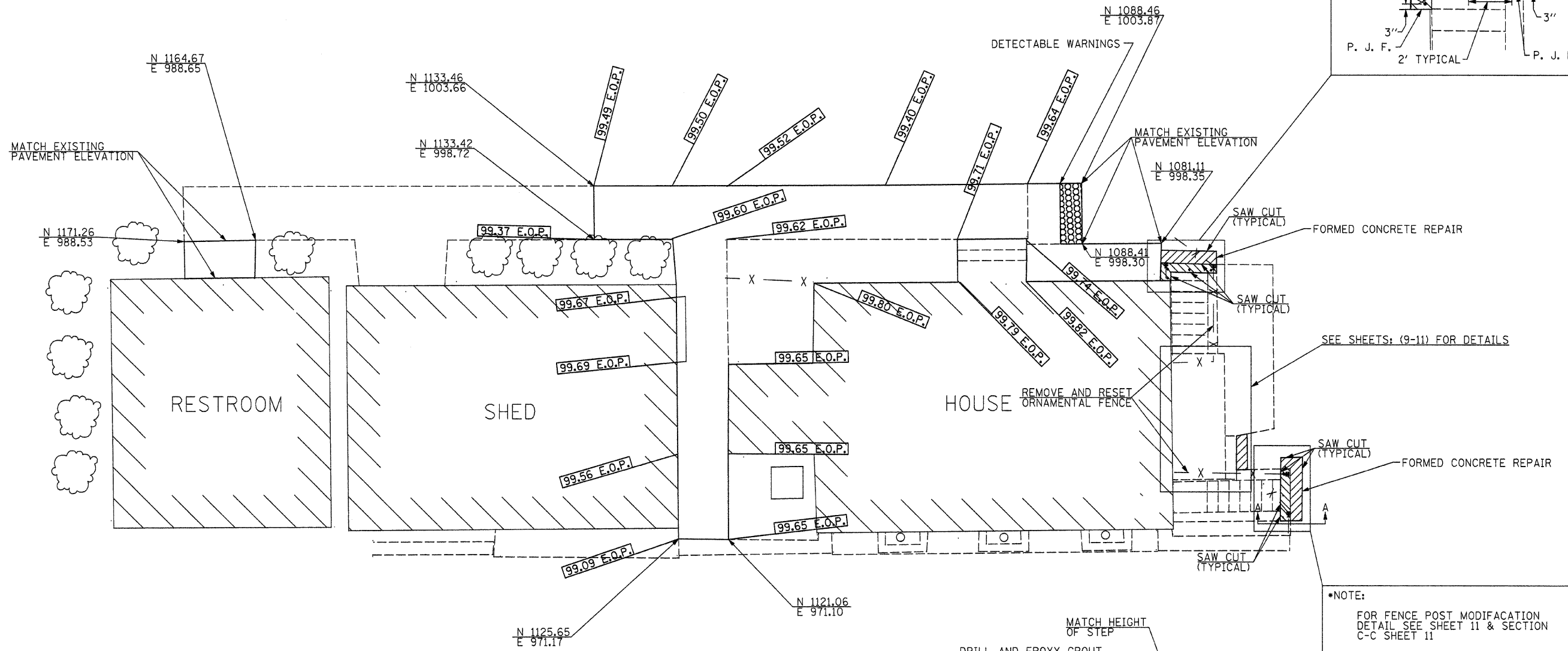
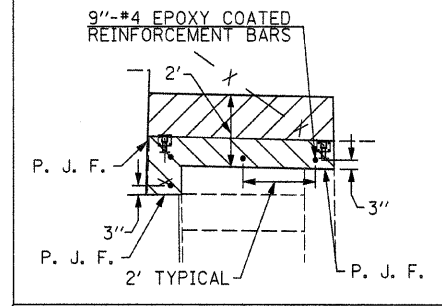
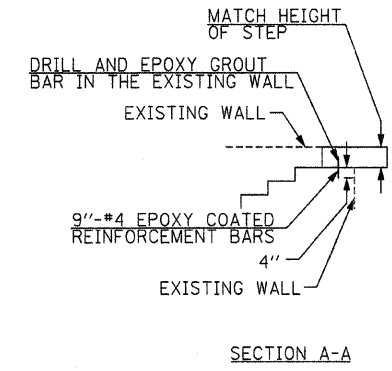


- CONCRETE REMOVAL AREA
(FULL HEIGHT OF FIRST STEP)
- REMOVE ASPHALT SURFACE AND BASE
FOR A DEPTH EQUAL TO THE FULL
HEIGHT OF THE FIRST STEP

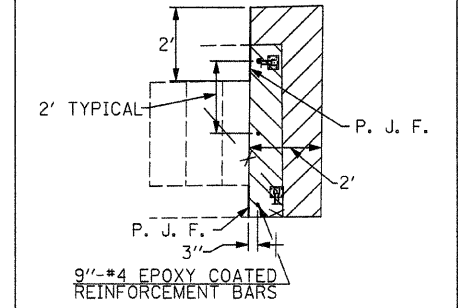
•NOTE:
FOR FENCE POST MODIFICATION
DETAIL SEE SHEET 11 & SECTION
C-C SHEET 11
P. J. F. = PREFORMED JOINT FILLER



SEE SHEETS: (9-11) FOR DETAILS



•NOTE:
FOR FENCE POST MODIFICATION
DETAIL SEE SHEET 11 & SECTION
C-C SHEET 11
P. J. F. = PREFORMED JOINT FILLER



FILE NAME = #FILE#	USER NAME = #USER#	DESIGNED - R.H.D	REVISED -	STATE OF ILLINOIS DEPARTMENT OF TRANSPORTATION	SIDEWALK DETAILS STEPHEN DOUGLAS TOMB STATE HISTORIC SITE	F.A. RTE.	SECTION	COUNTY	TOTAL SHEET NO.	
	PLOT SCALE = #SCALE#	DRAWN - J.H.F.	REVISED -		SCALE: 1" = 5'	SHEET NO. 5 OF 11 SHEETS	STA.	TO STA.	COOK	11
	PLOT DATE = #DATE#	CHECKED - T.T.P.	REVISED -		DATE - 5/12/10				CONTRACT NO. 46137	5
		DATE - 5/12/10	REVISED -						ILLINOIS FED. AID PROJECT	

JOB NO. 250-061-Q VASCONCELLES ENGINEERING CORP. DESIGN FIRM REGISTRATION NUMBER 184-002107