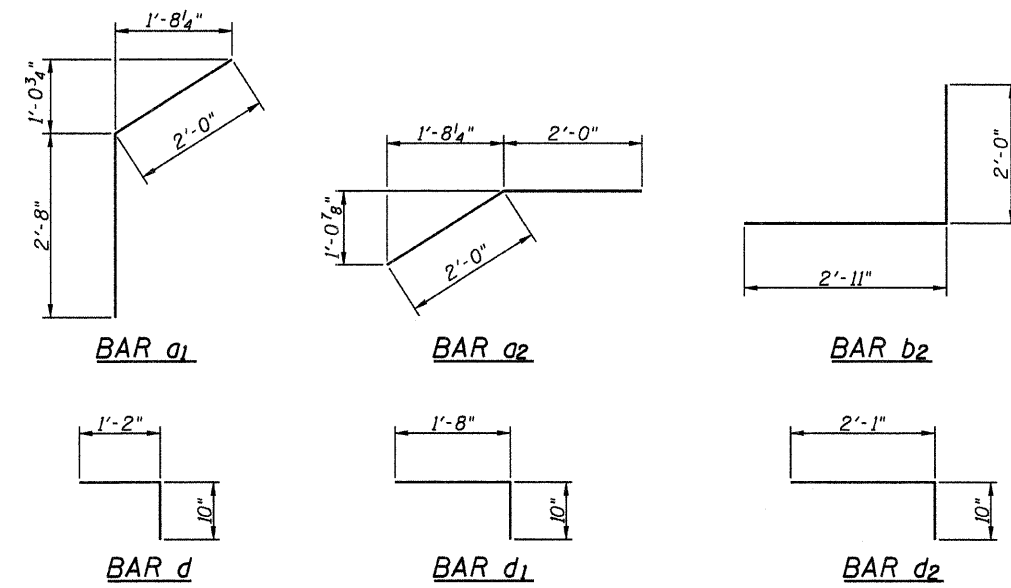


PLAN

* Bars shall be epoxy grouted into $\frac{3}{4}$ " drilled holes, 8" min. depth into existing concrete walls, in accordance with Section 584 of the Standard Specifications. Cost included with "Reinforcement Bars".



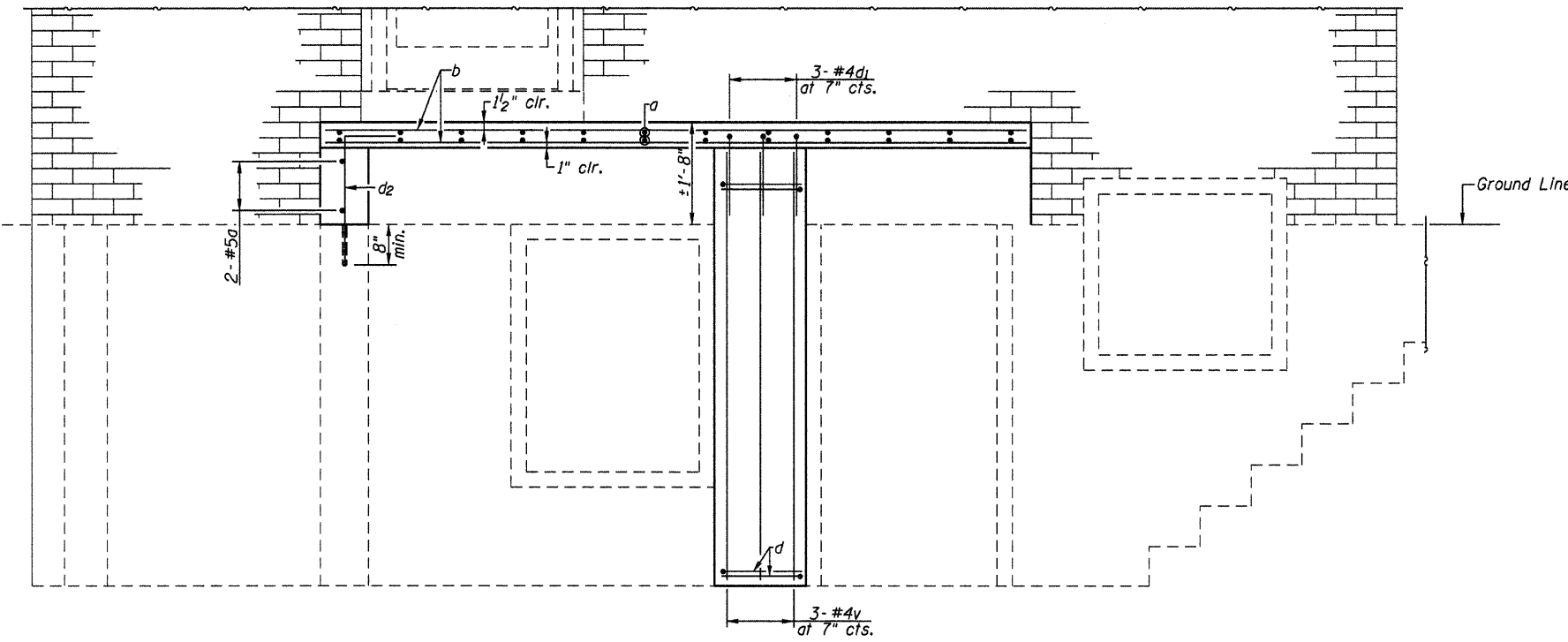
DESIGN LOAD

Live Load = 100 psf.

DESIGN STRESSES

$f'_c = 3500$ psi

$f_y = 60,000$ psi (reinforcement)



SECTION C-C

BILL OF MATERIAL

Bar	No.	Size	Length	Shape
a	26	#4	4'-9"	—
a ₁	4	#4	4'-8"	—
a ₂	4	#4	4'-0"	—
b	14	#4	11'-4"	—
b ₁	6	#4	3'-8"	—
b ₂	3	#4	4'-11"	—
d	14	#4	2'-0"	—
d ₁	3	#4	2'-6"	—
d ₂	17	#4	2'-11"	—
v	3	#4	6'-8"	—
Concrete Structures			Cu. Yds.	2.3
Reinforcement Bars			Pounds	310

Notes:
 Reinforcement bars shall conform to the requirements of ASTM A706.
 All exposed edges shall have a standard $\frac{3}{4}$ " chamfer.
 Work this sheet with Sheet 11 of 11.

JOB NO. 09-014A ALLEN HENDERSON & ASSOC., INC. DESIGN FIRM NUMBER 184-001907

FILE NAME =	USER NAME = #USER#	DESIGNED -	REVISED -	STATE OF ILLINOIS DEPARTMENT OF TRANSPORTATION	PORCH DETAILS				F.A. RTE.	SECTION	COUNTY	TOTAL SHEETS	SHEET NO.
#FILEL#		DRAWN -	REVISED -										
	PLOT SCALE = #SCALE#	CHECKED -	REVISED -			SCALE:	SHEET NO.	OF SHEETS	STA.	TO STA.	ILLINOIS FED. AID PROJECT		
	PLOT DATE = #DATE#	DATE -	REVISED -						CONTRACT NO.				