

STATE OF ILLINOIS
DEPARTMENT OF TRANSPORTATION
DIVISION OF HIGHWAYS

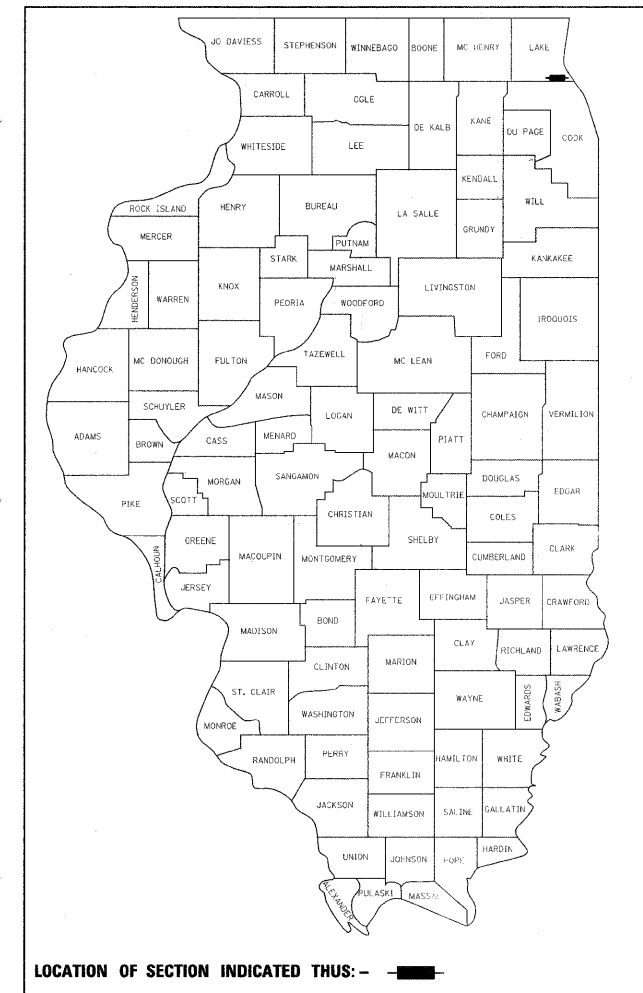
**PROPOSED
HIGHWAY PLANS**

F.A.P. ROUTE 337 (ILLINOIS ROUTE 22)
SECTION 20R-4
PROJECT: ACNHF-0337(010)
ROADWAY RECONSTRUCTION, WIDENING, DRAINAGE
TRAFFIC SIGNAL MODERNIZATION
LAKE COUNTY

F.A.P. RTE.	SECTION	COUNTY	TOTAL SHEETS	SHEET NO.
337	20R-4	LAKE	232 #	1
		ILLINOIS	CONTRACT NO. 60860	

*232 + 17 = 249

D-91-531-99



LOCATION OF SECTION INDICATED THUS: —

FOR INDEX OF SHEETS, SEE SHEET NO. 2

DESIGN DESIGNATION

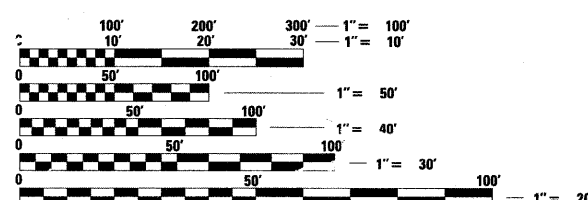
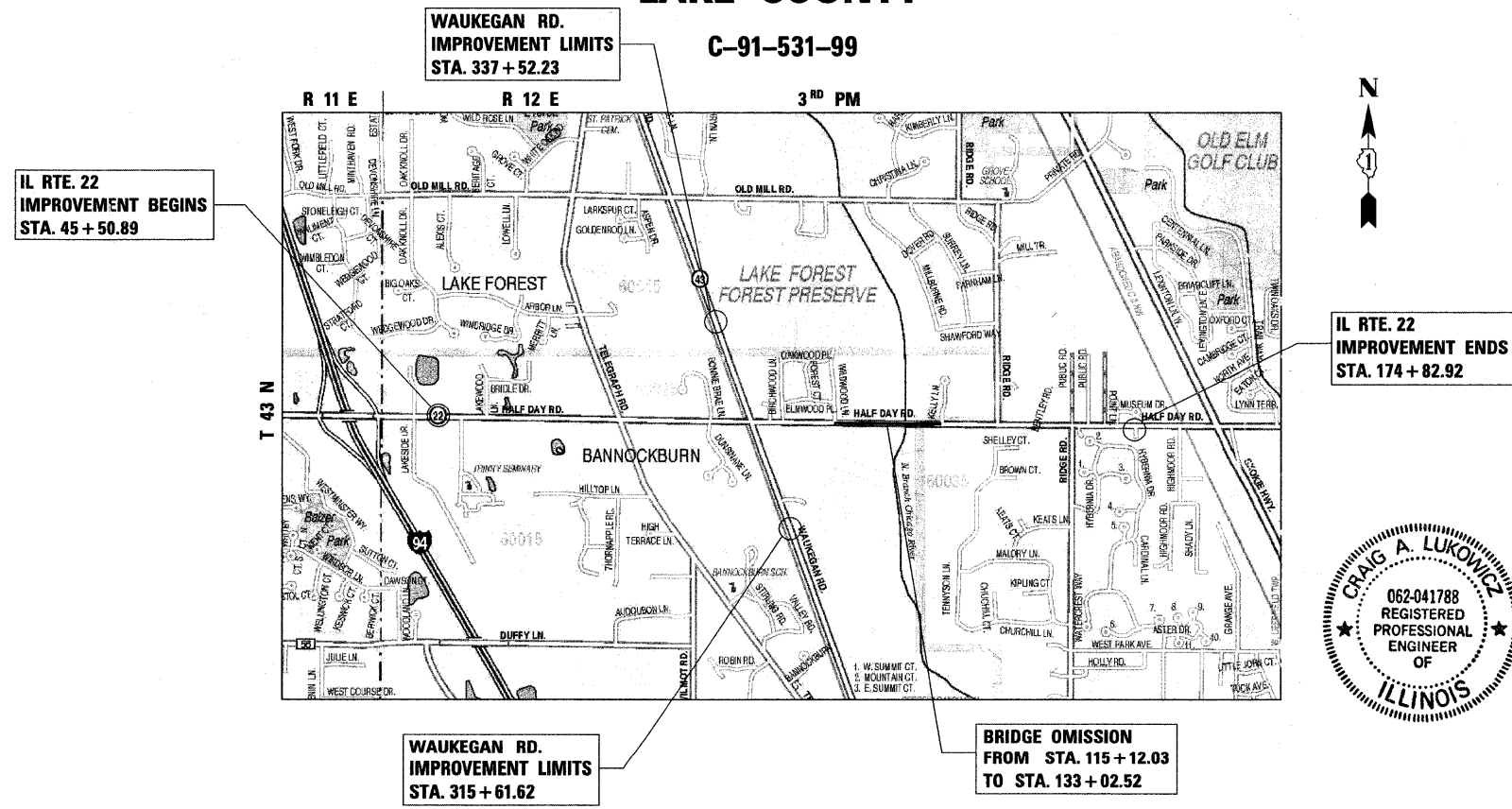
784(20) ARTERIAL 7.08 (PCC-20)

1995 2020
ADT IL. ROUTE 22: 21,800 37,000
POSTED SPEED LIMIT IL. ROUTE 22: 40 MPH
DESIGN SPEED LIMIT IL. ROUTE 22: 45 MPH

ADT IL. ROUTE 43: 24,100 26,000
POSTED SPEED LIMIT IL. ROUTE 43: 40 MPH
DESIGN SPEED LIMIT IL. ROUTE 43: 45 MPH

PROJECT LOCATED IN:

- BANNOCKBURN
- HIGHLAND PARK
- LAKE COUNTY



FULL SIZE PLANS HAVE BEEN PREPARED USING STANDARD ENGINEERING SCALES. REDUCED SIZED PLANS WILL NOT CONFORM TO STANDARD SCALES. IN MAKING MEASUREMENTS ON REDUCED PLANS, THE ABOVE SCALES MAY BE USED.

J.U.L.I.E.
JOINT UTILITY LOCATION INFORMATION FOR EXCAVATION
1-800-892-0123
OR 811

PROJECT MANAGER: RAJE IDRA C. SHAH

CONTRACT NO. 60860

GROSS LENGTH = 12,932.03 FT. = 2.449 MILE
NET LENGTH = 11,141.54 FT. = 2.110 MILE

Craig A. Lukowicz
CRAIG A. LUKOWICZ
ILLINOIS REGISTERED PROFESSIONAL ENGINEER NO. 062-041788
MY LICENSE EXPIRES ON 11-30-11.

CONSULTING ENGINEERS, SCIENTISTS & LAND SURVEYORS
B Bollinger, Lach & Associates, Inc.
333 PIERCE ROAD SUITE 200 ITASCA, IL 60143
P:(630) 438 6400 F:(630) 438 6444 www.bollingerlach.com
ITASCA • CHICAGO • ALGONQUIN • LAKE GENEVA • SOUTH BEND • INDIANAPOLIS



STATE OF ILLINOIS
DEPARTMENT OF TRANSPORTATION
DIVISION OF HIGHWAYS

SUBMITTED MAY 5, 2010

Diana M. O'Keefe
DEPUTY DIRECTOR OF HIGHWAYS, REGION ENGINEER

June 25, 2010
Scott E. Stitt, P.E., Inc.
acting ENGINEER OF DESIGN AND ENVIRONMENT

June 25, 2010
Christine M. Reed, Inc.
DIRECTOR OF HIGHWAYS, CHIEF ENGINEER

**PRINTED BY THE AUTHORITY
OF THE STATE OF ILLINOIS**